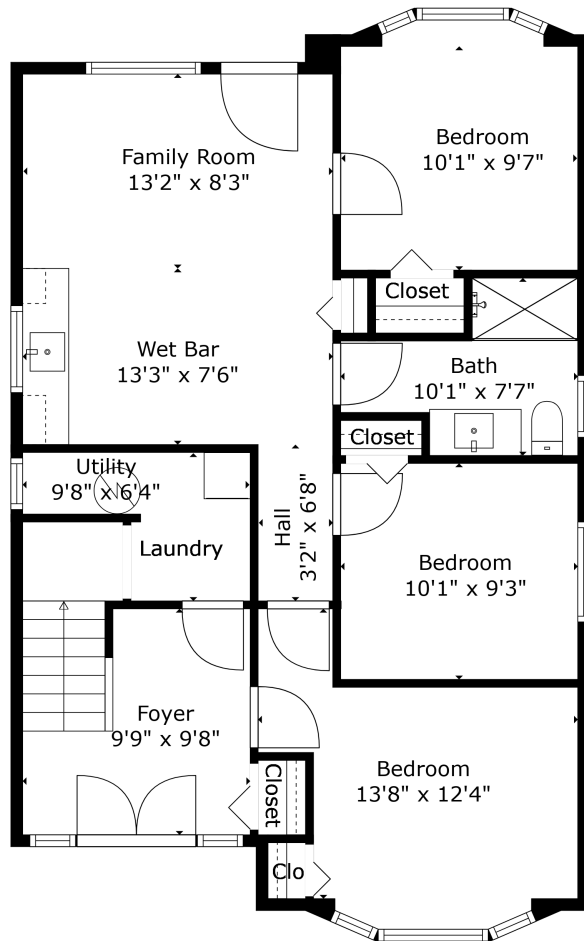


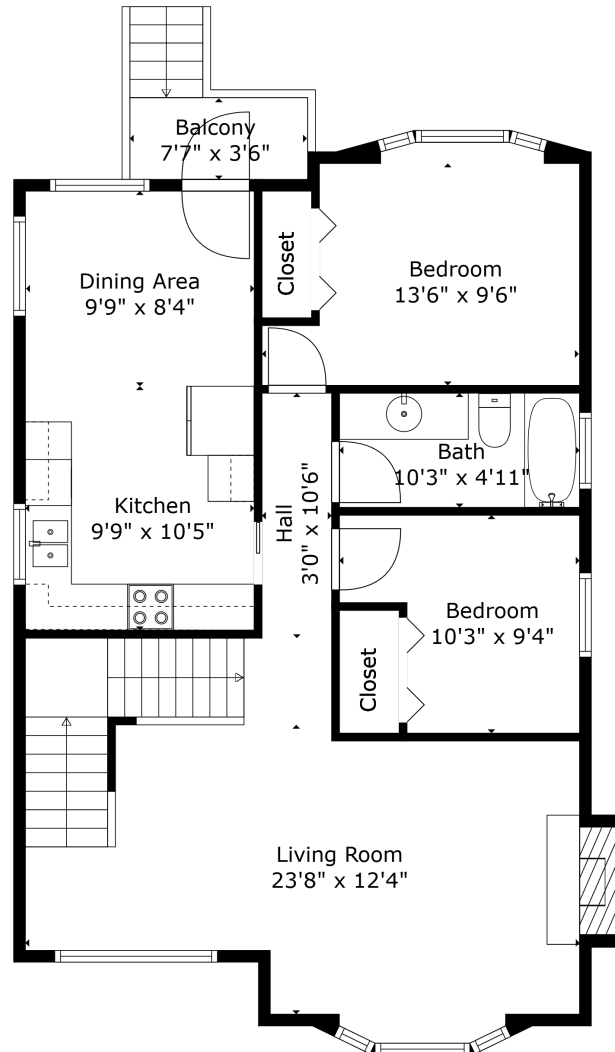
3221 William St Vancouver, BC

LOWER FLOOR	815 SQ.FT.
MAIN FLOOR	893 SQ.FT.
UPPER FLOOR	379 SQ.FT.
TOTAL LIVING AREA	2,087SQ.FT.

LOWER FLOOR
815 SQ.FT.
CEILING HEIGHT 8'



MAIN FLOOR
893 SQ.FT.
CEILING HEIGHT 8'



UPPER FLOOR
379 SQ.FT.
CEILING HEIGHT 8'

