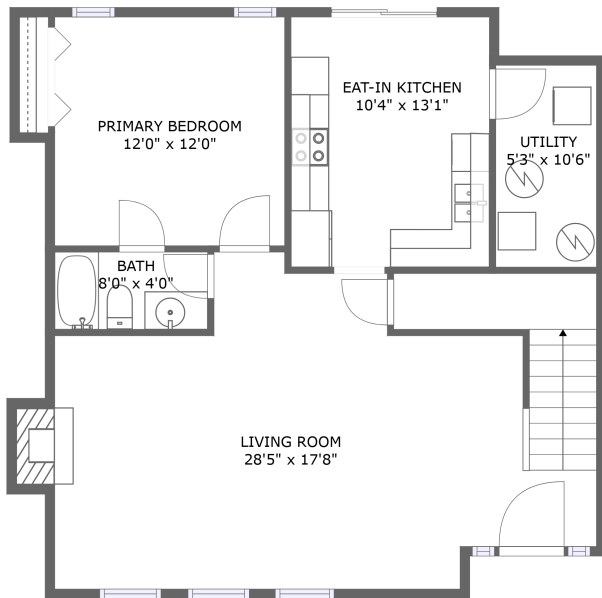
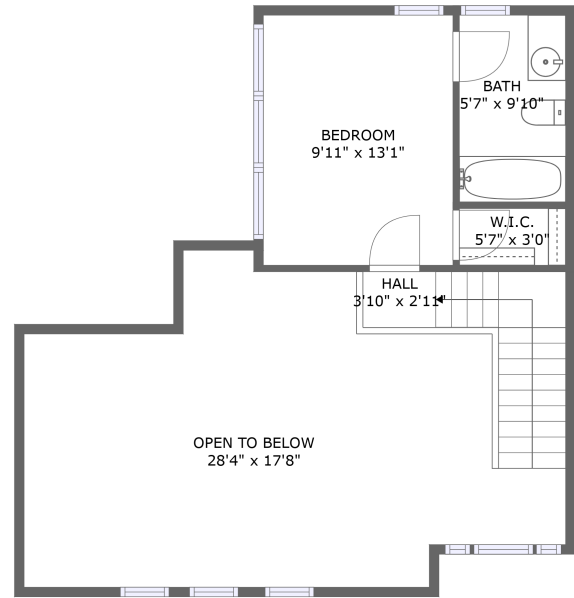


1310 S Lea Ct SE Unit A, Smyrna, GA, US




FLOOR 1



FLOOR 2

Property summary

 **0** Garages

 **2** Bedrooms

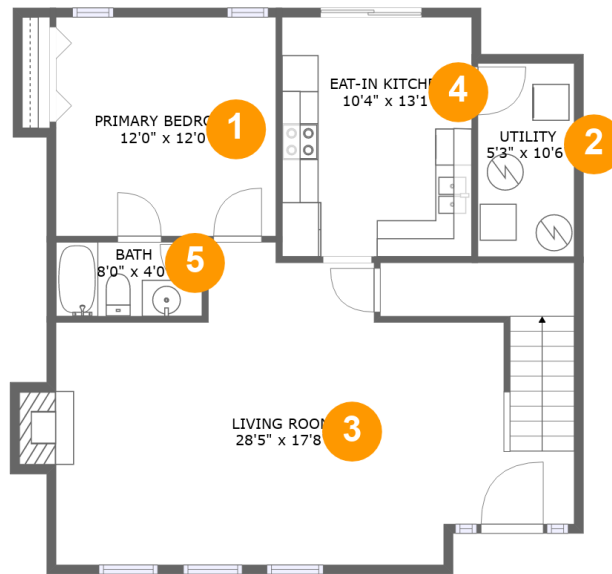
 **2** Bathrooms

 **0** Half baths

 **2** Floors

 **1,196** Gross living area sqft

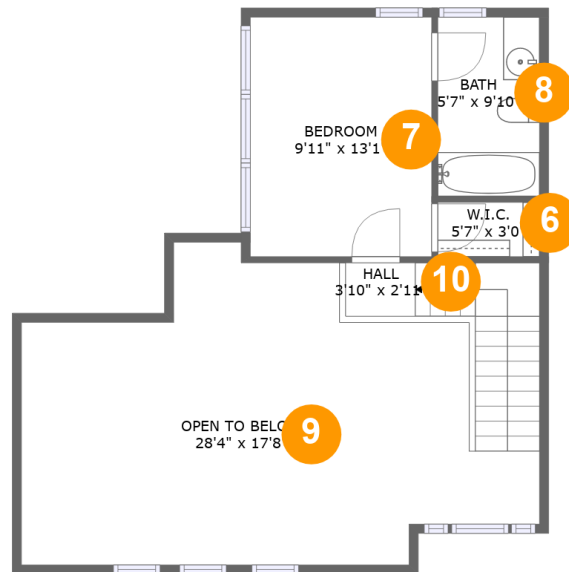
 **1,606** Total sqft

1310 S Lea Ct SE Unit A, Smyrna, GA, US**Room dimensions**

Floor 1

Total sqft: 903 Living area: 893

#		Dimensions	sqft	Counted as living area
1	Primary Bedroom	12'0" x 12'0"	144 sq. ft	Yes
2	Utility	5'3" x 10'6"	56 sq. ft	Yes
3	Living Room	28'5" x 17'8"	434 sq. ft	Yes
4	Eat-in Kitchen	10'4" x 13'1"	136 sq. ft	Yes
5	Bath	8'0" x 4'0"	32 sq. ft	Yes

1310 S Lea Ct SE Unit A, Smyrna, GA, US**Room dimensions**

Floor 2

Total sqft: 703 Living area: 303

#		Dimensions	sqft	Counted as living area
6	W.I.C.	5'7" x 3'0"	17 sq. ft	Yes
7	Bedroom	9'11" x 13'1"	130 sq. ft	Yes
8	Bath	5'7" x 9'10"	55 sq. ft	Yes
9	Open To Below	28'4" x 17'8"	367 sq. ft	No
10	Hall	3'10" x 2'11"	63 sq. ft	Yes

1310 S Lea Ct SE Unit A, Smyrna, GA, US

1 Floor 1 - Primary Bedroom



Dimensions: 12'0" x 12'0"
Area: 144 sq. ft
Counted as living area: Yes

Heated: Yes
Finished: Yes
Enclosed: Yes
Contiguous: Yes
Permitted: Yes
Wet space: No
Addition: No
Conversion: No

2 Floor 1 - Utility



Dimensions: 5'3" x 10'6"
Area: 56 sq. ft
Counted as living area: Yes

Heated: Yes
Finished: Yes
Enclosed: Yes
Contiguous: Yes
Permitted: Yes
Wet space: No
Addition: No
Conversion: No

1310 S Lea Ct SE Unit A, Smyrna, GA, US

3 Floor 1 - Living Room



Dimensions: 28'5" x 17'8"
Area: 434 sq. ft
Counted as living area: Yes

Heated: Yes
Finished: Yes
Enclosed: Yes
Contiguous: Yes
Permitted: Yes
Wet space: No
Addition: No
Conversion: No

4 Floor 1 - Eat-in Kitchen



Dimensions: 10'4" x 13'1"
Area: 136 sq. ft
Counted as living area: Yes

Heated: Yes
Finished: Yes
Enclosed: Yes
Contiguous: Yes
Permitted: Yes
Wet space: No
Addition: No
Conversion: No

5 Floor 1 - Bath

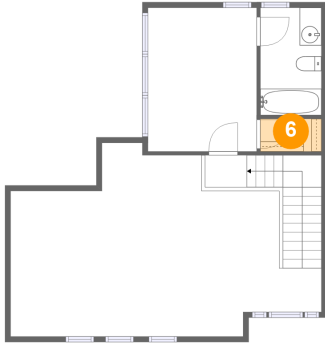


Dimensions: 8'0" x 4'0"
Area: 32 sq. ft
Counted as living area: Yes

Heated: Yes
Finished: Yes
Enclosed: Yes
Contiguous: Yes
Permitted: Yes
Wet space: Yes
Addition: No
Conversion: No

1310 S Lea Ct SE Unit A, Smyrna, GA, US

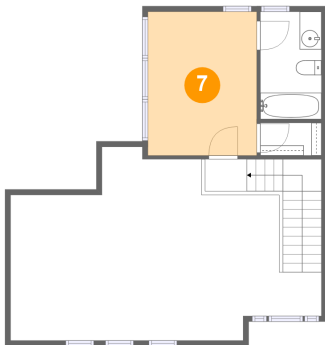
6 Floor 2 - W.I.C.



Dimensions: 5'7" x 3'0"
Area: 17 sq. ft
Counted as living area: Yes

Heated: Yes
Finished: Yes
Enclosed: Yes
Contiguous: Yes
Permitted: Yes
Wet space: No
Addition: No
Conversion: No

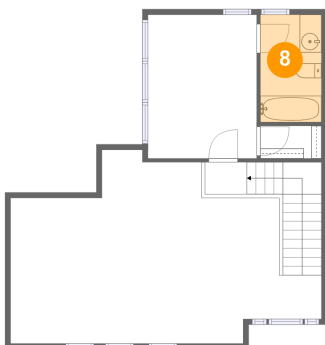
7 Floor 2 - Bedroom



Dimensions: 9'11" x 13'1"
Area: 130 sq. ft
Counted as living area: Yes

Heated: Yes
Finished: Yes
Enclosed: Yes
Contiguous: Yes
Permitted: Yes
Wet space: No
Addition: No
Conversion: No

8 Floor 2 - Bath

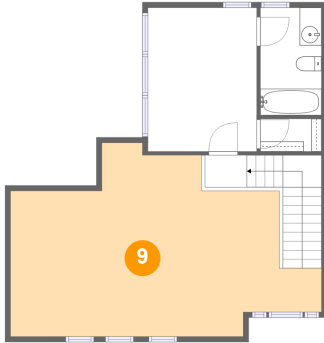


Dimensions: 5'7" x 9'10"
Area: 55 sq. ft
Counted as living area: Yes

Heated: Yes
Finished: Yes
Enclosed: Yes
Contiguous: Yes
Permitted: Yes
Wet space: Yes
Addition: No
Conversion: No

1310 S Lea Ct SE Unit A, Smyrna, GA, US

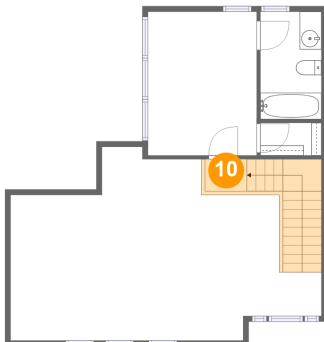
9 Floor 2 - Open To Below



Dimensions: 28'4" x 17'8"
Area: 367 sq. ft
Counted as living area: No

Heated: No
Finished: No
Enclosed: No
Contiguous: Yes
Permitted: No
Wet space: No
Addition: No
Conversion: No

10 Floor 2 - Hall



Dimensions: 3'10" x 2'11"
Area: 63 sq. ft
Counted as living area: Yes

Heated: Yes
Finished: Yes
Enclosed: Yes
Contiguous: Yes
Permitted: Yes
Wet space: No
Addition: No
Conversion: No