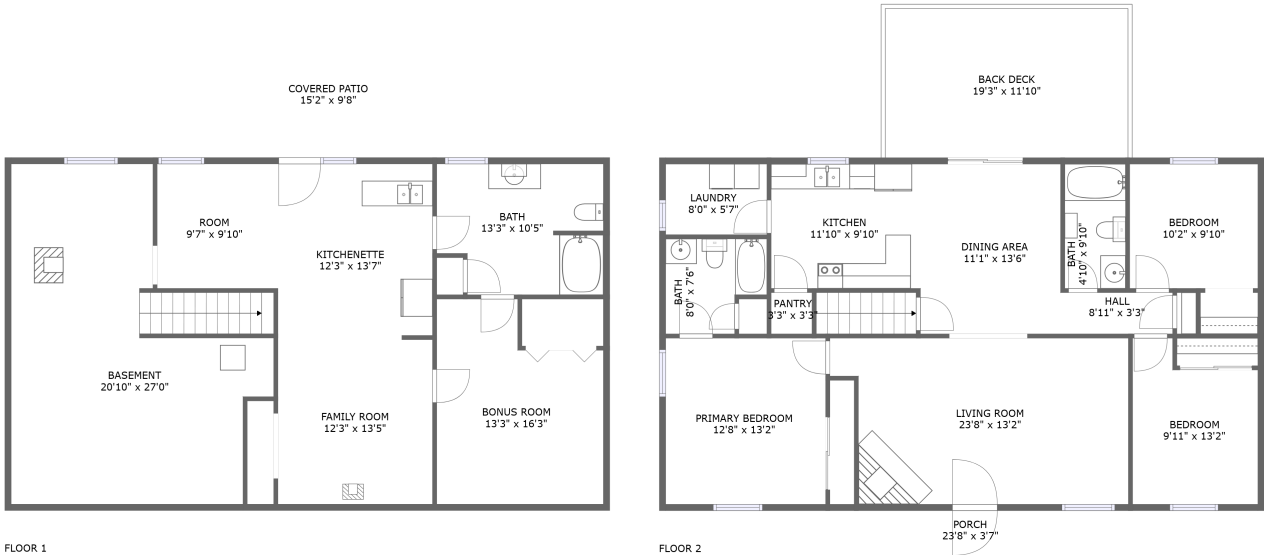


1254 Archway Lane, Blue Ridge, Bedford County,  
Virginia, United States, 24064



Property summary



**0**  
Garages



**3**  
Bedrooms



**3**  
Bathrooms



**0**  
Half baths



**2**  
Floors

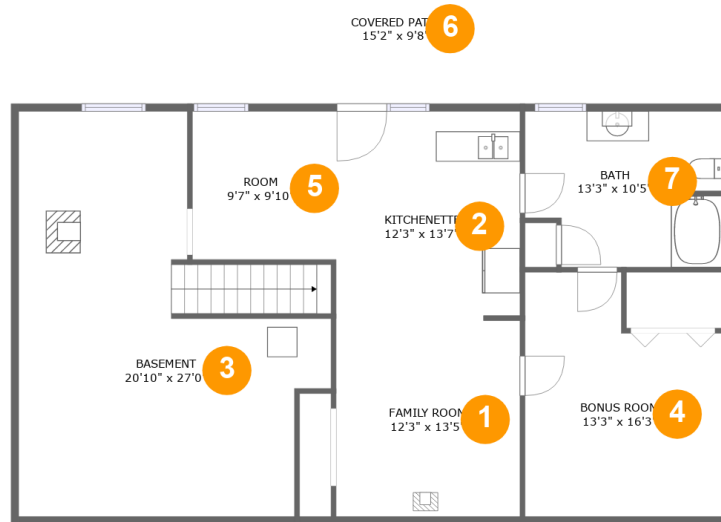


**2,496**  
Gross living  
area sqft



**3,147**  
Total sqft

1254 Archway Lane, Blue Ridge, Bedford County,  
Virginia, United States, 24064



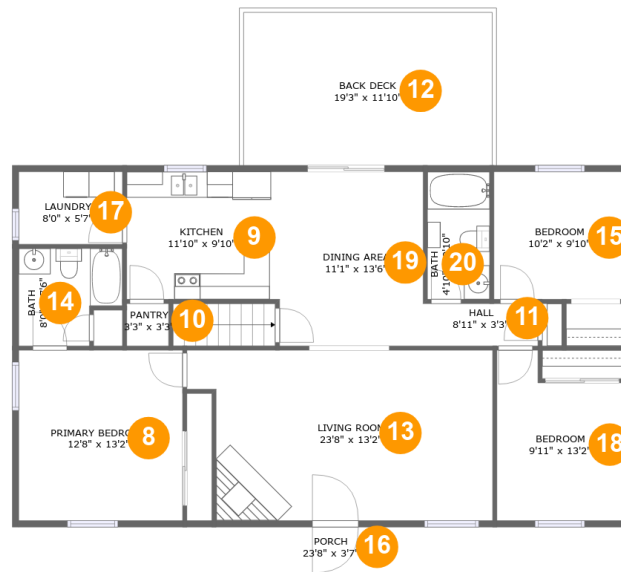
## Room dimensions

### Floor 1

Total sqft: 1490    Living area: 1153

#		Dimensions	sqft	Counted as living area
1	Family Room	12'3" x 13'5"	163 sq. ft	No
2	Kitchenette	12'3" x 13'7"	167 sq. ft	Yes
3	Basement	20'10" x 27'0"	440 sq. ft	Yes
4	Bonus Room	13'3" x 16'3"	188 sq. ft	Yes
5	Room	9'7" x 9'10"	95 sq. ft	Yes
6	Covered Patio	15'2" x 9'8"	147 sq. ft	No
7	Bath	13'3" x 10'5"	128 sq. ft	Yes

**1254 Archway Lane, Blue Ridge, Bedford County,  
Virginia, United States, 24064**



## Room dimensions

Floor 2

Total sqft: 1657    Living area: 1343

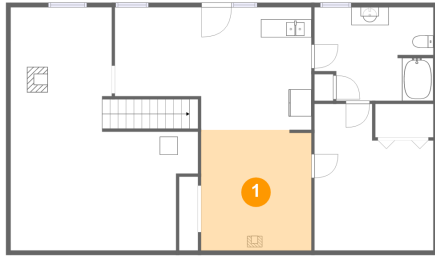
#		Dimensions	sqft	Counted as living area
8	Primary Bedroom	12'8" x 13'2"	167 sq. ft	Yes
9	Kitchen	11'10" x 9'10"	117 sq. ft	Yes
10	Pantry	3'3" x 3'3"	11 sq. ft	Yes
11	Hall	8'11" x 3'3"	29 sq. ft	Yes
12	Back Deck	19'3" x 11'10"	228 sq. ft	No
13	Living Room	23'8" x 13'2"	289 sq. ft	Yes
14	Bath	8'0" x 7'6"	53 sq. ft	Yes
15	Bedroom	10'2" x 9'10"	100 sq. ft	Yes
16	Porch	23'8" x 3'7"	86 sq. ft	No
17	Laundry	8'0" x 5'7"	45 sq. ft	Yes
18	Bedroom	9'11" x 13'2"	114 sq. ft	Yes

1254 Archway Lane, Blue Ridge, Bedford County,  
Virginia, United States, 24064

#		Dimensions	sqft	Counted as living area
19	Dining Area	11'1" x 13'6"	150 sq. ft	Yes
20	Bath	4'10" x 9'10"	48 sq. ft	Yes

**1254 Archway Lane, Blue Ridge, Bedford County,  
Virginia, United States, 24064**

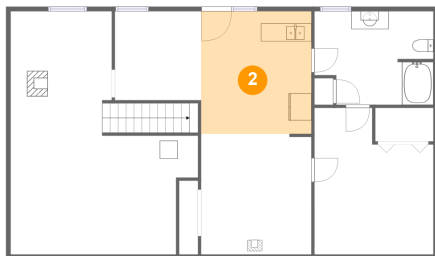
## **1 Floor 1 - Family Room**



**Dimensions:** 12'3" x 13'5"  
**Area:** 163 sq. ft  
**Counted as living area:** No

**Heated:** Yes  
**Finished:** No  
**Enclosed:** Yes  
**Contiguous:** Yes  
**Permitted:** Yes  
**Wet space:** No  
**Addition:** No  
**Conversion:** No

## **2 Floor 1 - Kitchenette**

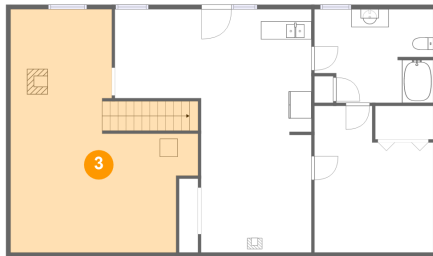


**Dimensions:** 12'3" x 13'7"  
**Area:** 167 sq. ft  
**Counted as living area:** Yes

**Heated:** Yes  
**Finished:** Yes  
**Enclosed:** Yes  
**Contiguous:** Yes  
**Permitted:** Yes  
**Wet space:** No  
**Addition:** No  
**Conversion:** No

1254 Archway Lane, Blue Ridge, Bedford County,  
Virginia, United States, 24064

### 3 Floor 1 - Basement



Dimensions: 20'10" x 27'0"  
Area: 440 sq. ft  
Counted as living area: Yes

Heated: Yes  
Finished: Yes  
Enclosed: Yes  
Contiguous: Yes  
Permitted: Yes  
Wet space: No  
Addition: No  
Conversion: No

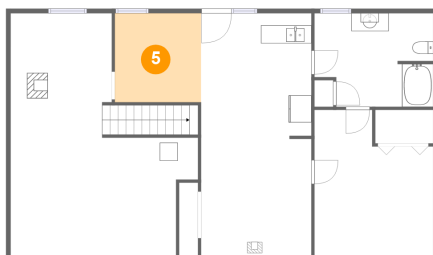
### 4 Floor 1 - Bonus Room



Dimensions: 13'3" x 16'3"  
Area: 188 sq. ft  
Counted as living area: Yes

Heated: Yes  
Finished: Yes  
Enclosed: Yes  
Contiguous: Yes  
Permitted: Yes  
Wet space: No  
Addition: No  
Conversion: No

### 5 Floor 1 - Room

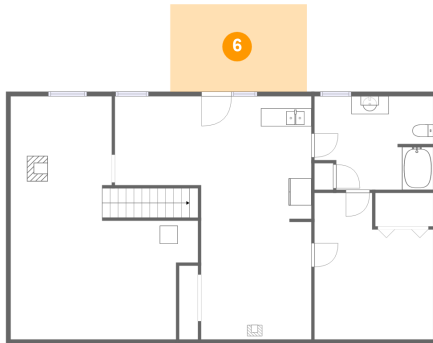


Dimensions: 9'7" x 9'10"  
Area: 95 sq. ft  
Counted as living area: Yes

Heated: Yes  
Finished: Yes  
Enclosed: Yes  
Contiguous: Yes  
Permitted: Yes  
Wet space: No  
Addition: No  
Conversion: No

1254 Archway Lane, Blue Ridge, Bedford County,  
Virginia, United States, 24064

## 6 Floor 1 - Covered Patio



Dimensions: 15'2" x 9'8"  
Area: 147 sq. ft  
Counted as living area: No

Heated: No  
Finished: Yes  
Enclosed: No  
Contiguous: Yes  
Permitted: Yes  
Wet space: No  
Addition: No  
Conversion: No

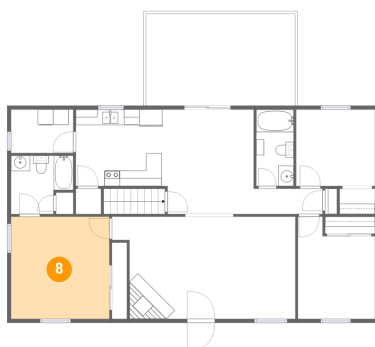
## 7 Floor 1 - Bath



Dimensions: 13'3" x 10'5"  
Area: 128 sq. ft  
Counted as living area: Yes

Heated: Yes  
Finished: Yes  
Enclosed: Yes  
Contiguous: Yes  
Permitted: Yes  
Wet space: Yes  
Addition: No  
Conversion: No

## 8 Floor 2 - Primary Bedroom

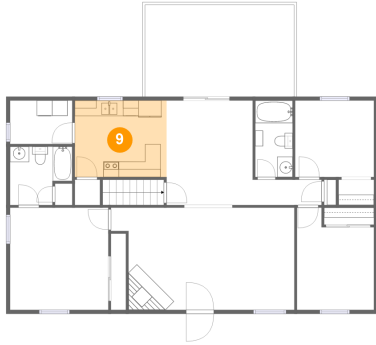


Dimensions: 12'8" x 13'2"  
Area: 167 sq. ft  
Counted as living area: Yes

Heated: Yes  
Finished: Yes  
Enclosed: Yes  
Contiguous: Yes  
Permitted: Yes  
Wet space: No  
Addition: No  
Conversion: No

1254 Archway Lane, Blue Ridge, Bedford County,  
Virginia, United States, 24064

## 9 Floor 2 - Kitchen



Dimensions: 11'10" x 9'10"  
Area: 117 sq. ft  
Counted as living area: Yes

Heated: Yes  
Finished: Yes  
Enclosed: Yes  
Contiguous: Yes  
Permitted: Yes  
Wet space: No  
Addition: No  
Conversion: No

## 10 Floor 2 - Pantry



Dimensions: 3'3" x 3'3"  
Area: 11 sq. ft  
Counted as living area: Yes

Heated: Yes  
Finished: Yes  
Enclosed: Yes  
Contiguous: Yes  
Permitted: Yes  
Wet space: No  
Addition: No  
Conversion: No

## 11 Floor 2 - Hall



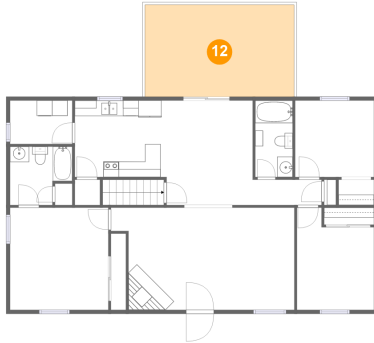
Dimensions: 8'11" x 3'3"  
Area: 29 sq. ft  
Counted as living area: Yes

Heated: Yes  
Finished: Yes  
Enclosed: Yes  
Contiguous: Yes  
Permitted: Yes  
Wet space: No  
Addition: No  
Conversion: No



1254 Archway Lane, Blue Ridge, Bedford County,  
Virginia, United States, 24064

## 12 Floor 2 - Back Deck



Dimensions: 19'3" x 11'10"  
Area: 228 sq. ft  
Counted as living area: No

Heated: No  
Finished: Yes  
Enclosed: No  
Contiguous: No  
Permitted: Yes  
Wet space: No  
Addition: No  
Conversion: No

## 13 Floor 2 - Living Room



Dimensions: 23'8" x 13'2"  
Area: 289 sq. ft  
Counted as living area: Yes

Heated: Yes  
Finished: Yes  
Enclosed: Yes  
Contiguous: Yes  
Permitted: Yes  
Wet space: No  
Addition: No  
Conversion: No

## 14 Floor 2 - Bath

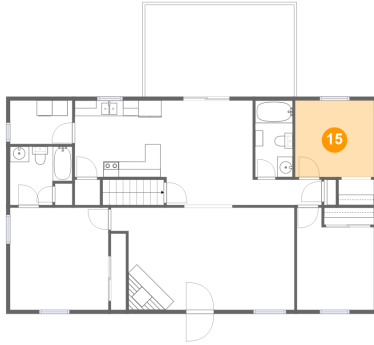


Dimensions: 8'0" x 7'6"  
Area: 53 sq. ft  
Counted as living area: Yes

Heated: Yes  
Finished: Yes  
Enclosed: Yes  
Contiguous: Yes  
Permitted: Yes  
Wet space: Yes  
Addition: No  
Conversion: No

1254 Archway Lane, Blue Ridge, Bedford County,  
Virginia, United States, 24064

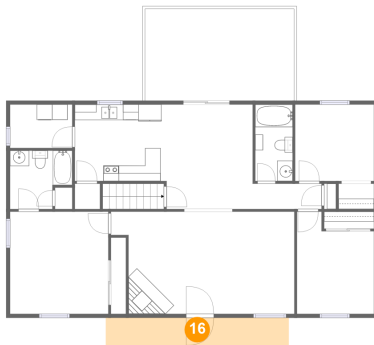
## 15 Floor 2 - Bedroom



Dimensions: 10'2" x 9'10"  
Area: 100 sq. ft  
Counted as living area: Yes

Heated: Yes  
Finished: Yes  
Enclosed: Yes  
Contiguous: Yes  
Permitted: Yes  
Wet space: No  
Addition: No  
Conversion: No

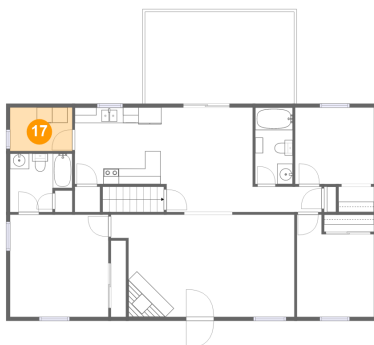
## 16 Floor 2 - Porch



Dimensions: 23'8" x 3'7"  
Area: 86 sq. ft  
Counted as living area: No

Heated: No  
Finished: Yes  
Enclosed: No  
Contiguous: Yes  
Permitted: Yes  
Wet space: No  
Addition: No  
Conversion: No

## 17 Floor 2 - Laundry

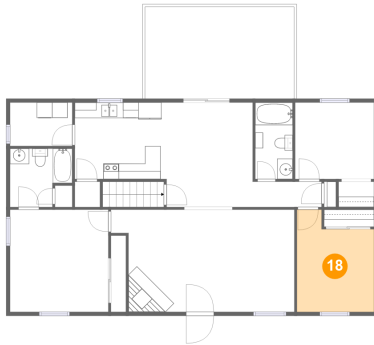


Dimensions: 8'0" x 5'7"  
Area: 45 sq. ft  
Counted as living area: Yes

Heated: Yes  
Finished: Yes  
Enclosed: Yes  
Contiguous: Yes  
Permitted: Yes  
Wet space: No  
Addition: No  
Conversion: No

1254 Archway Lane, Blue Ridge, Bedford County,  
Virginia, United States, 24064

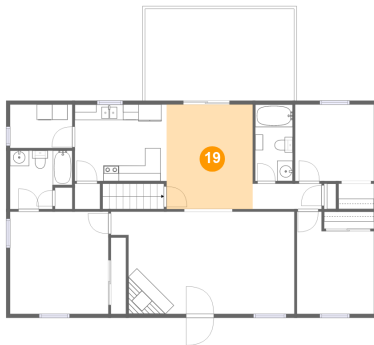
## 18 Floor 2 - Bedroom



Dimensions: 9'11" x 13'2"  
Area: 114 sq. ft  
Counted as living area: Yes

Heated: Yes  
Finished: Yes  
Enclosed: Yes  
Contiguous: Yes  
Permitted: Yes  
Wet space: No  
Addition: No  
Conversion: No

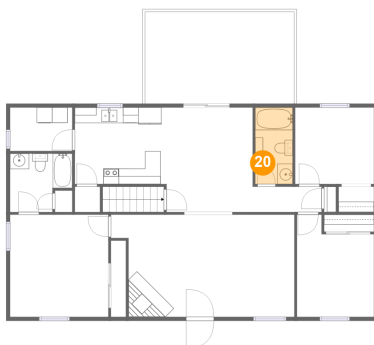
## 19 Floor 2 - Dining Area



Dimensions: 11'1" x 13'6"  
Area: 150 sq. ft  
Counted as living area: Yes

Heated: Yes  
Finished: Yes  
Enclosed: Yes  
Contiguous: Yes  
Permitted: Yes  
Wet space: No  
Addition: No  
Conversion: No

## 20 Floor 2 - Bath



Dimensions: 4'10" x 9'10"  
Area: 48 sq. ft  
Counted as living area: Yes

Heated: Yes  
Finished: Yes  
Enclosed: Yes  
Contiguous: Yes  
Permitted: Yes  
Wet space: Yes  
Addition: No  
Conversion: No