

1st floor

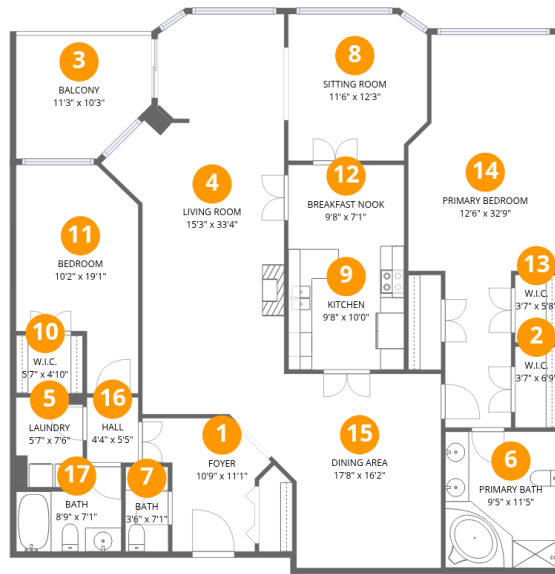
**Total Area: 1897 sq. ft**

1st Floor: 1897 sq. ft

Excluded: Balcony 106 sq. ft

## Property summary





## Room dimensions

Floor 1

Total:1897sqft

Excluded: 106sqft

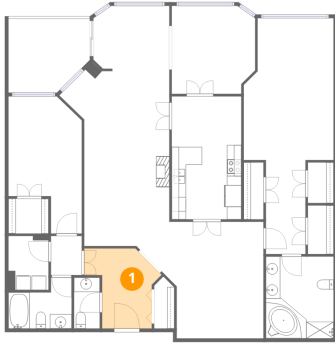
#		Dimensions	sqft	Counted as living area
1	Foyer	10'9" x 11'1"	120 sq. ft	Yes
2	W.I.C.	3'7" x 6'9"	24 sq. ft	Yes
3	Balcony	11'3" x 10'3"	116 sq. ft	No
4	Living Room	15'3" x 33'4"	508 sq. ft	Yes
5	Laundry	5'7" x 7'6"	42 sq. ft	Yes
6	Primary Bath	9'5" x 11'5"	107 sq. ft	Yes
7	Bath	3'6" x 7'1"	25 sq. ft	Yes
8	Sitting Room	11'6" x 12'3"	141 sq. ft	Yes
9	Kitchen	9'8" x 10'0"	97 sq. ft	Yes
10	W.I.C.	5'7" x 4'10"	27 sq. ft	Yes
11	Bedroom	10'2" x 19'1"	194 sq. ft	Yes

Home data report

**3800 Yonge Street, North York, Ontario M4N 3P7, Canada, 507**

#		Dimensions	sqft	Counted as living area
12	Breakfast Nook	9'8" x 7'1"	68 sq. ft	Yes
13	W.I.C.	3'7" x 5'8"	20 sq. ft	Yes
14	Primary Bedroom	12'6" x 32'9"	409 sq. ft	Yes
15	Dining Area	17'8" x 16'2"	286 sq. ft	Yes
16	Hall	4'4" x 5'5"	23 sq. ft	Yes
17	Bath	8'9" x 7'1"	62 sq. ft	Yes

## 1 Floor 1 - Foyer



Dimensions: 10'9" x 11'1"  
Area: 120 sq. ft  
Counted as living area: Yes

Heated: Yes  
Finished: Yes  
Enclosed: Yes  
Contiguous: Yes  
Permitted: Yes  
Wet space: No  
Addition: No  
Conversion: No

## 2 Floor 1 - W.I.C.



Dimensions: 3'7" x 6'9"  
Area: 24 sq. ft  
Counted as living area: Yes

Heated: Yes  
Finished: Yes  
Enclosed: Yes  
Contiguous: Yes  
Permitted: Yes  
Wet space: No  
Addition: No  
Conversion: No

### 3 Floor 1 - Balcony



Dimensions: 11'3" x 10'3"  
Area: 116 sq. ft  
Counted as living area: No

Heated: No  
Finished: No  
Enclosed: No  
Contiguous: Yes  
Permitted: Yes  
Wet space: No  
Addition: No  
Conversion: No

### 4 Floor 1 - Living Room



Dimensions: 15'3" x 33'4"  
Area: 508 sq. ft  
Counted as living area: Yes

Heated: Yes  
Finished: Yes  
Enclosed: Yes  
Contiguous: Yes  
Permitted: Yes  
Wet space: No  
Addition: No  
Conversion: No

### 5 Floor 1 - Laundry



Dimensions: 5'7" x 7'6"  
Area: 42 sq. ft  
Counted as living area: Yes

Heated: Yes  
Finished: Yes  
Enclosed: Yes  
Contiguous: Yes  
Permitted: Yes  
Wet space: No  
Addition: No  
Conversion: No

## 6 Floor 1 - Primary Bath



Dimensions: 9'5" x 11'5"  
Area: 107 sq. ft  
Counted as living area: Yes

Heated: Yes  
Finished: Yes  
Enclosed: Yes  
Contiguous: Yes  
Permitted: Yes  
Wet space: Yes  
Addition: No  
Conversion: No

## 7 Floor 1 - Bath



Dimensions: 3'6" x 7'1"  
Area: 25 sq. ft  
Counted as living area: Yes

Heated: Yes  
Finished: Yes  
Enclosed: Yes  
Contiguous: Yes  
Permitted: Yes  
Wet space: Yes  
Addition: No  
Conversion: No

## 8 Floor 1 - Sitting Room



Dimensions: 11'6" x 12'3"  
Area: 141 sq. ft  
Counted as living area: Yes

Heated: Yes  
Finished: Yes  
Enclosed: Yes  
Contiguous: Yes  
Permitted: Yes  
Wet space: No  
Addition: No  
Conversion: No

## 9 Floor 1 - Kitchen



Dimensions: 9'8" x 10'0"  
Area: 97 sq. ft  
Counted as living area: Yes

Heated: Yes  
Finished: Yes  
Enclosed: Yes  
Contiguous: Yes  
Permitted: Yes  
Wet space: No  
Addition: No  
Conversion: No

## 10 Floor 1 - W.I.C.



Dimensions: 5'7" x 4'10"  
Area: 27 sq. ft  
Counted as living area: Yes

Heated: Yes  
Finished: Yes  
Enclosed: Yes  
Contiguous: Yes  
Permitted: Yes  
Wet space: No  
Addition: No  
Conversion: No

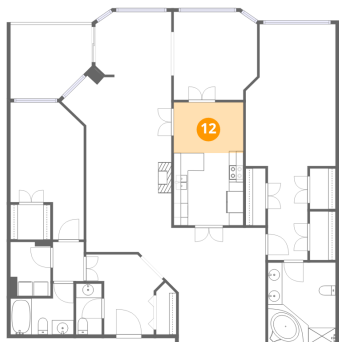
## 11 Floor 1 - Bedroom



Dimensions: 10'2" x 19'1"  
Area: 194 sq. ft  
Counted as living area: Yes

Heated: Yes  
Finished: Yes  
Enclosed: Yes  
Contiguous: Yes  
Permitted: Yes  
Wet space: No  
Addition: No  
Conversion: No

## 12 Floor 1 - Breakfast Nook



Dimensions: 9'8" x 7'1"  
Area: 68 sq. ft  
Counted as living area: Yes

Heated: Yes  
Finished: Yes  
Enclosed: Yes  
Contiguous: Yes  
Permitted: Yes  
Wet space: No  
Addition: No  
Conversion: No

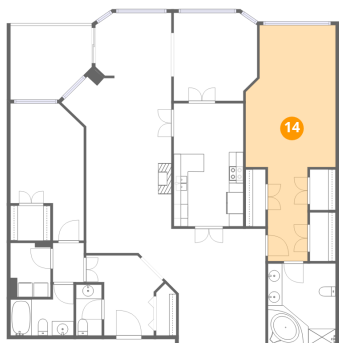
## 13 Floor 1 - W.I.C.



Dimensions: 3'7" x 5'8"  
Area: 20 sq. ft  
Counted as living area: Yes

Heated: Yes  
Finished: Yes  
Enclosed: Yes  
Contiguous: Yes  
Permitted: Yes  
Wet space: No  
Addition: No  
Conversion: No

## 14 Floor 1 - Primary Bedroom



Dimensions: 12'6" x 32'9"  
Area: 409 sq. ft  
Counted as living area: Yes

Heated: Yes  
Finished: Yes  
Enclosed: Yes  
Contiguous: Yes  
Permitted: Yes  
Wet space: No  
Addition: No  
Conversion: No

### 15 Floor 1 - Dining Area



Dimensions: 17'8" x 16'2"  
Area: 286 sq. ft  
Counted as living area: Yes

Heated: Yes  
Finished: Yes  
Enclosed: Yes  
Contiguous: Yes  
Permitted: Yes  
Wet space: No  
Addition: No  
Conversion: No

### 16 Floor 1 - Hall



Dimensions: 4'4" x 5'5"  
Area: 23 sq. ft  
Counted as living area: Yes

Heated: Yes  
Finished: Yes  
Enclosed: Yes  
Contiguous: Yes  
Permitted: Yes  
Wet space: No  
Addition: No  
Conversion: No

### 17 Floor 1 - Bath



Dimensions: 8'9" x 7'1"  
Area: 62 sq. ft  
Counted as living area: Yes

Heated: Yes  
Finished: Yes  
Enclosed: Yes  
Contiguous: Yes  
Permitted: Yes  
Wet space: Yes  
Addition: No  
Conversion: No