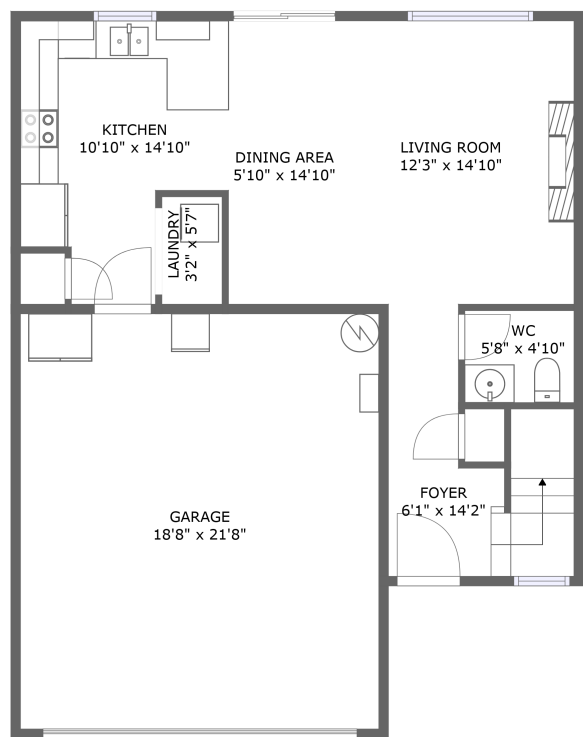
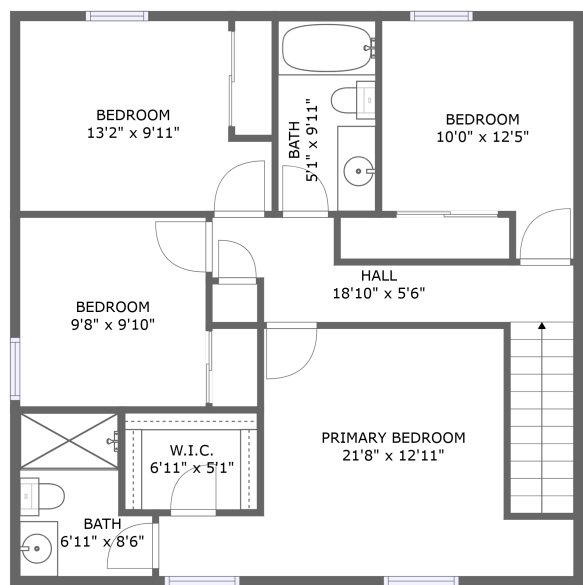


Home report

907 East 16th Street, Lafayette, Yamhill County, Oregon, United States, 97127





FLOOR 1





FLOOR 2


Property summary


 **1** Garages


 **4** Bedrooms

 **2** Bathrooms

 **1** Half baths

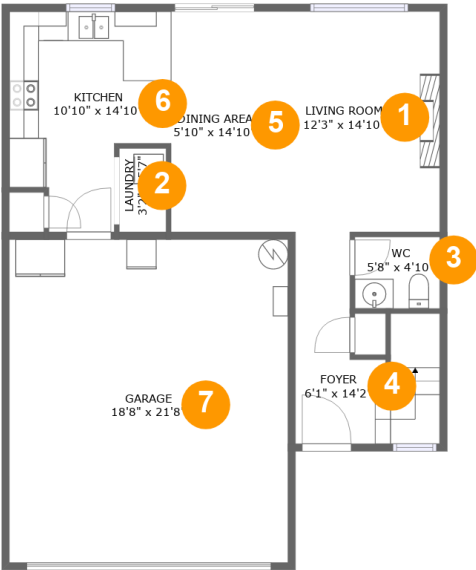
 **2** Floors

 **1,521** Gross living area sqft

 **1,951** Total sqft

Home report

907 East 16th Street, Lafayette, Yamhill County, Oregon, United States, 97127



Room dimensions

Floor 1

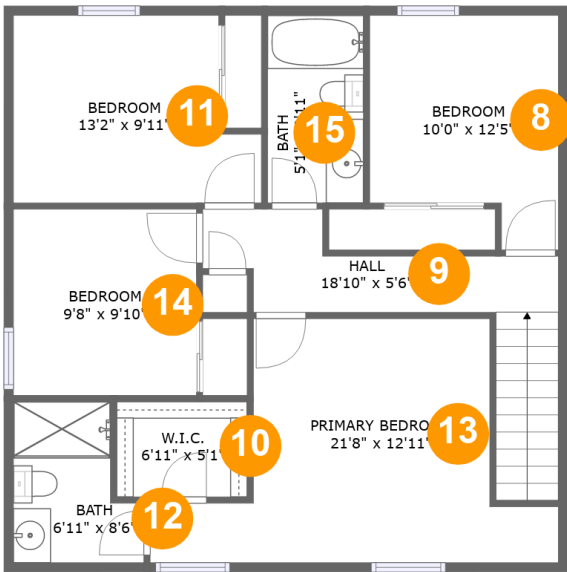
Total sqft: 1054

Living area: 624

#		Max Dimensions	sqft	Included
1	Living Room	12'3" x 14'10"	181 sq. ft	Yes
2	Laundry	3'2" x 5'7"	18 sq. ft	Yes
3	WC	5'8" x 4'10"	27 sq. ft	Yes
4	Foyer	6'1" x 14'2"	95 sq. ft	Yes
5	Dining Area	5'10" x 14'10"	86 sq. ft	Yes
6	Kitchen	10'10" x 14'10"	130 sq. ft	Yes
7	Garage	18'8" x 21'8"	405 sq. ft	No

Home report

907 East 16th Street, Lafayette, Yamhill County, Oregon, United States, 97127



Room dimensions

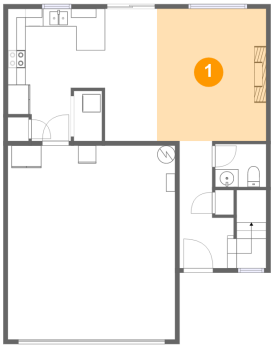
Floor 2

Total sqft: 897

Living area: 897

#		Max Dimensions	sqft	Included
8	Bedroom	10'0" x 12'5"	107 sq. ft	Yes
9	Hall	18'10" x 5'6"	99 sq. ft	Yes
10	W.I.C.	6'11" x 5'1"	35 sq. ft	Yes
11	Bedroom	13'2" x 9'11"	116 sq. ft	Yes
12	Bath	6'11" x 8'6"	49 sq. ft	Yes
13	Primary Bedroom	21'8" x 12'11"	190 sq. ft	Yes
14	Bedroom	9'8" x 9'10"	96 sq. ft	Yes
15	Bath	5'1" x 9'11"	50 sq. ft	Yes

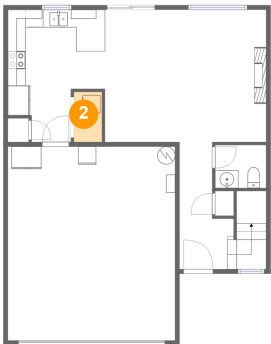
1 Floor 1 - Living Room



Max Dimensions: 12'3" x 14'10"  
Calculated Area: 181 sq. ft  
Included: Yes

Heated: Yes  
Finished: Yes  
Enclosed: Yes  
Contiguous: Yes  
Permitted: Yes  
Wet space: No  
Addition: No  
Conversion: No

2 Floor 1 - Laundry

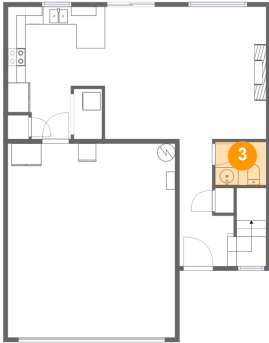


Max Dimensions: 3'2" x 5'7"  
Calculated Area: 18 sq. ft  
Included: Yes

Heated: Yes  
Finished: Yes  
Enclosed: Yes  
Contiguous: Yes  
Permitted: Yes  
Wet space: No  
Addition: No  
Conversion: No

907 East 16th Street, Lafayette, Yamhill County, Oregon, United States, 97127

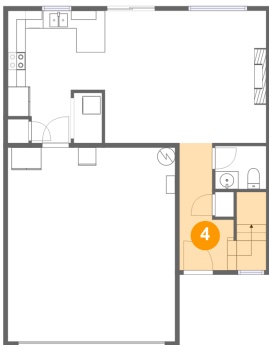
### 3 Floor 1 - WC



Max Dimensions: 5'8" x 4'10"  
Calculated Area: 27 sq. ft  
Included: Yes

Heated: Yes  
Finished: Yes  
Enclosed: Yes  
Contiguous: Yes  
Permitted: Yes  
Wet space: Yes  
Addition: No  
Conversion: No

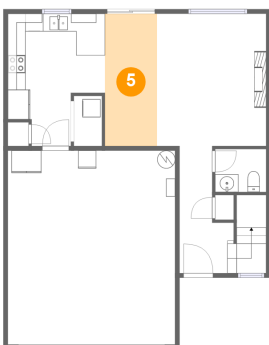
### 4 Floor 1 - Foyer



Max Dimensions: 6'1" x 14'2"  
Calculated Area: 95 sq. ft  
Included: Yes

Heated: Yes  
Finished: Yes  
Enclosed: Yes  
Contiguous: Yes  
Permitted: Yes  
Wet space: No  
Addition: No  
Conversion: No

### 5 Floor 1 - Dining Area

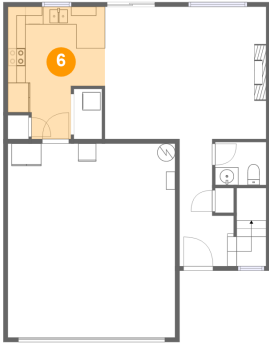


Max Dimensions: 5'10" x 14'10"  
Calculated Area: 86 sq. ft  
Included: Yes

Heated: Yes  
Finished: Yes  
Enclosed: Yes  
Contiguous: Yes  
Permitted: Yes  
Wet space: No  
Addition: No  
Conversion: No

907 East 16th Street, Lafayette, Yamhill County, Oregon, United States, 97127

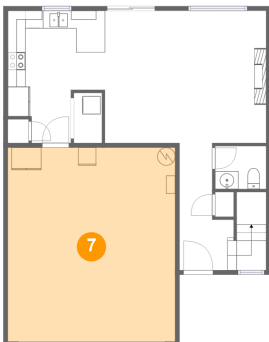
## 6 Floor 1 - Kitchen



Max Dimensions: 10'10" x 14'10"  
Calculated Area: 130 sq. ft  
Included: Yes

Heated: Yes  
Finished: Yes  
Enclosed: Yes  
Contiguous: Yes  
Permitted: Yes  
Wet space: No  
Addition: No  
Conversion: No

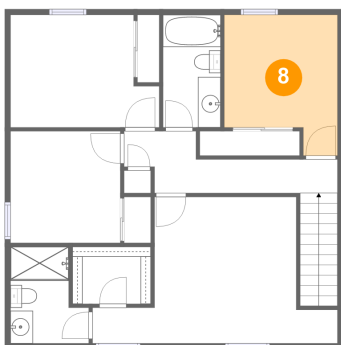
## 7 Floor 1 - Garage



Max Dimensions: 18'8" x 21'8"  
Calculated Area: 405 sq. ft  
Included: No

Heated: No  
Finished: No  
Enclosed: Yes  
Contiguous: Yes  
Permitted: Yes  
Wet space: No  
Addition: No  
Conversion: No

## 8 Floor 2 - Bedroom

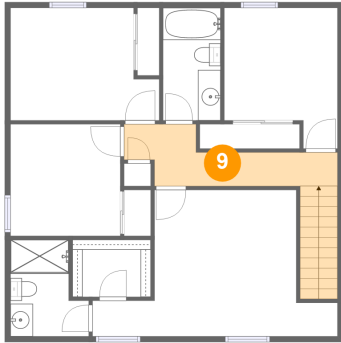


Max Dimensions: 10'0" x 12'5"  
Calculated Area: 107 sq. ft  
Included: Yes

Heated: Yes  
Finished: Yes  
Enclosed: Yes  
Contiguous: Yes  
Permitted: Yes  
Wet space: No  
Addition: No  
Conversion: No

907 East 16th Street, Lafayette, Yamhill County, Oregon, United States, 97127

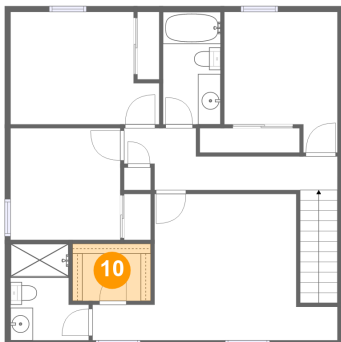
## 9 Floor 2 - Hall



Max Dimensions: 18'10" x 5'6"  
Calculated Area: 99 sq. ft  
Included: Yes

Heated: Yes  
Finished: Yes  
Enclosed: Yes  
Contiguous: Yes  
Permitted: Yes  
Wet space: No  
Addition: No  
Conversion: No

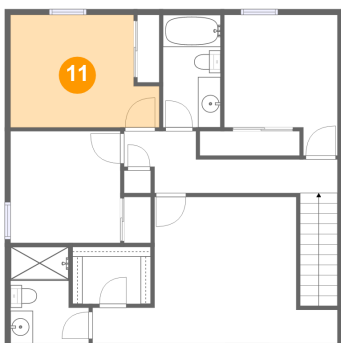
## 10 Floor 2 - W.I.C.



Max Dimensions: 6'11" x 5'1"  
Calculated Area: 35 sq. ft  
Included: Yes

Heated: Yes  
Finished: Yes  
Enclosed: Yes  
Contiguous: Yes  
Permitted: Yes  
Wet space: No  
Addition: No  
Conversion: No

## 11 Floor 2 - Bedroom

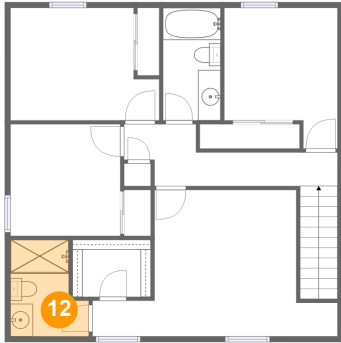


Max Dimensions: 13'2" x 9'11"  
Calculated Area: 116 sq. ft  
Included: Yes

Heated: Yes  
Finished: Yes  
Enclosed: Yes  
Contiguous: Yes  
Permitted: Yes  
Wet space: No  
Addition: No  
Conversion: No

907 East 16th Street, Lafayette, Yamhill County, Oregon, United States, 97127

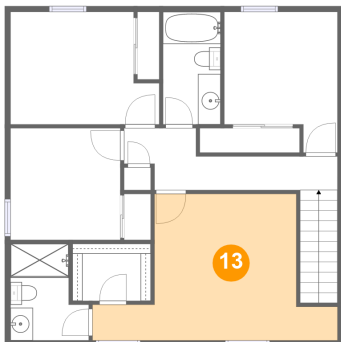
## 12 Floor 2 - Bath



Max Dimensions: 6'11" x 8'6"  
Calculated Area: 49 sq. ft  
Included: Yes

Heated: Yes  
Finished: Yes  
Enclosed: Yes  
Contiguous: Yes  
Permitted: Yes  
Wet space: Yes  
Addition: No  
Conversion: No

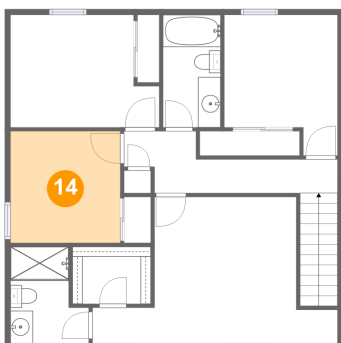
## 13 Floor 2 - Primary Bedroom



Max Dimensions: 21'8" x 12'11"  
Calculated Area: 190 sq. ft  
Included: Yes

Heated: Yes  
Finished: Yes  
Enclosed: Yes  
Contiguous: Yes  
Permitted: Yes  
Wet space: No  
Addition: No  
Conversion: No

## 14 Floor 2 - Bedroom



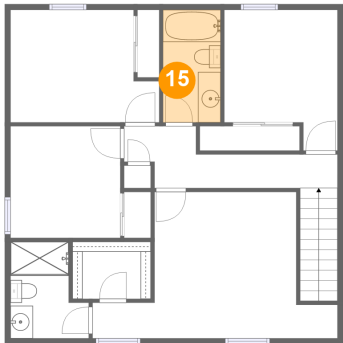
Max Dimensions: 9'8" x 9'10"  
Calculated Area: 96 sq. ft  
Included: Yes

Heated: Yes  
Finished: Yes  
Enclosed: Yes  
Contiguous: Yes  
Permitted: Yes  
Wet space: No  
Addition: No  
Conversion: No



907 East 16th Street, Lafayette, Yamhill County, Oregon, United States, 97127

**15** Floor 2 - Bath



Max Dimensions: 5'1" x 9'11"  
Calculated Area: 50 sq. ft  
Included: Yes

Heated: Yes  
Finished: Yes  
Enclosed: Yes  
Contiguous: Yes  
Permitted: Yes  
Wet space: Yes  
Addition: No  
Conversion: No