

1484 Foxmore Street, Pocatello, Bannock County, Idaho, United States, 83204



Property summary

 **1** Garages

 **5** Bedrooms

 **2** Bathrooms

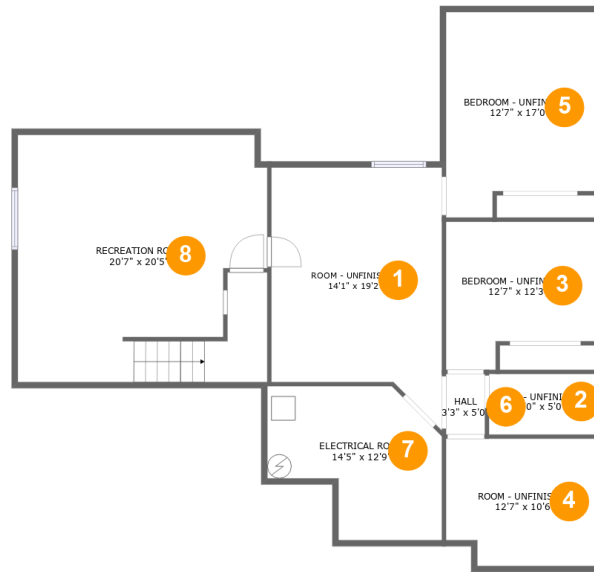
 **0** Half baths

 **2** Floors

 **2,070**
Gross living
area sqft

 **4,246**
Total sqft

1484 Foxmore Street, Pocatello, Bannock County, Idaho, United States, 83204



Room dimensions

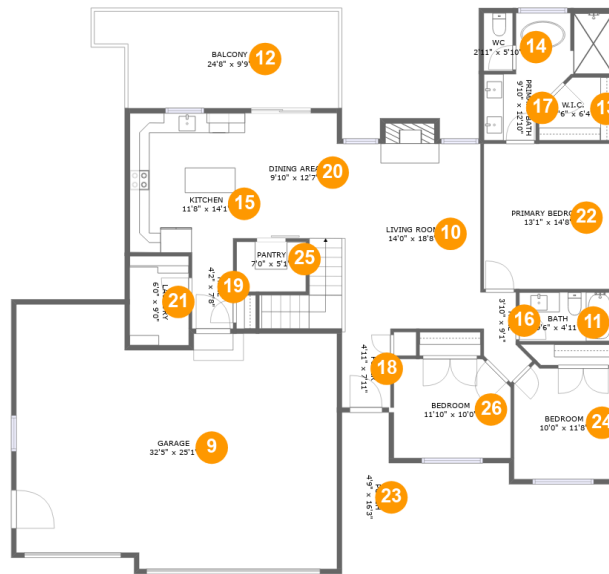
Floor 1

Total sqft: 1513

Living area: 458

#		Dimensions	sqft	Counted as living area
1	Room - Unfinished	14'1" x 19'2"	259 sq. ft	No
2	Bath - Unfinished	9'0" x 5'0"	45 sq. ft	No
3	Bedroom - Unfinished	12'7" x 12'3"	134 sq. ft	No
4	Room - Unfinished	12'7" x 10'6"	127 sq. ft	No
5	Bedroom - Unfinished	12'7" x 17'0"	195 sq. ft	No
6	Hall	3'3" x 5'0"	16 sq. ft	No
7	Electrical Room	14'5" x 12'9"	145 sq. ft	No
8	Recreation Room	20'7" x 20'5"	418 sq. ft	Yes

1484 Foxmore Street, Pocatello, Bannock County, Idaho, United States, 83204



Room dimensions

Floor 2

Total sqft: 2733 Living area: 1612

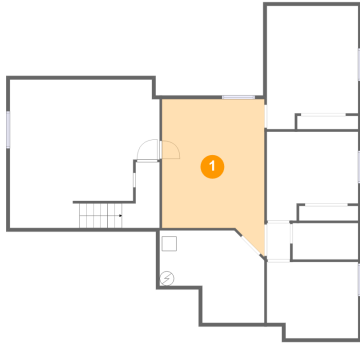
#		Dimensions	sqft	Counted as living area
9	Garage	32'5" x 25'1"	769 sq. ft	No
10	Living Room	14'0" x 18'8"	272 sq. ft	Yes
11	Bath	9'6" x 4'11"	47 sq. ft	Yes
12	Balcony	24'8" x 9'9"	219 sq. ft	No
13	W.I.C.	7'6" x 6'4"	42 sq. ft	Yes
14	WC	2'11" x 5'10"	17 sq. ft	Yes
15	Kitchen	11'8" x 14'1"	162 sq. ft	Yes
16	Hall	3'10" x 9'1"	30 sq. ft	Yes
17	Primary Bath	9'10" x 12'10"	101 sq. ft	Yes
18	Foyer	4'11" x 7'11"	39 sq. ft	Yes
19	Hall	4'2" x 7'8"	32 sq. ft	Yes

**1484 Foxmore Street, Pocatello, Bannock County,
Idaho, United States, 83204**

#		Dimensions	sqft	Counted as living area
20	Dining Area	9'10" x 12'7"	169 sq. ft	Yes
21	Laundry	6'0" x 9'0"	54 sq. ft	Yes
22	Primary Bedroom	13'1" x 14'8"	191 sq. ft	Yes
23	Porch	4'9" x 16'3"	77 sq. ft	No
24	Bedroom	10'0" x 11'8"	111 sq. ft	Yes
25	Pantry	7'0" x 5'1"	36 sq. ft	Yes
26	Bedroom	11'10" x 10'0"	114 sq. ft	Yes

**1484 Foxmore Street, Pocatello, Bannock County,
Idaho, United States, 83204**

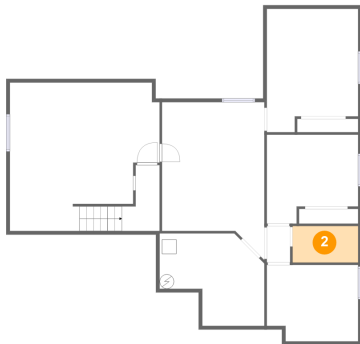
1 Floor 1 - Room - Unfinished



Dimensions: 14'1" x 19'2"
Area: 259 sq. ft
Counted as living area: No

Heated: Yes
Finished: No
Enclosed: Yes
Contiguous: Yes
Permitted: Yes
Wet space: No
Addition: No
Conversion: No

2 Floor 1 - Bath - Unfinished

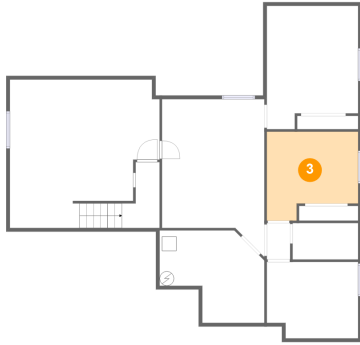


Dimensions: 9'0" x 5'0"
Area: 45 sq. ft
Counted as living area: No

Heated: Yes
Finished: No
Enclosed: Yes
Contiguous: Yes
Permitted: Yes
Wet space: No
Addition: No
Conversion: No

1484 Foxmore Street, Pocatello, Bannock County,
Idaho, United States, 83204

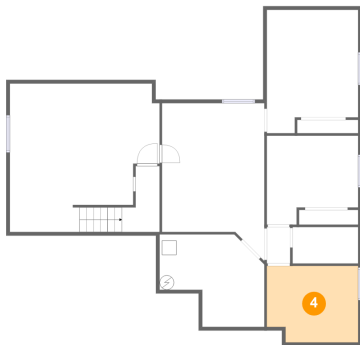
3 Floor 1 - Bedroom - Unfinished



Dimensions: 12'7" x 12'3"
Area: 134 sq. ft
Counted as living area: No

Heated: Yes
Finished: No
Enclosed: Yes
Contiguous: Yes
Permitted: Yes
Wet space: No
Addition: No
Conversion: No

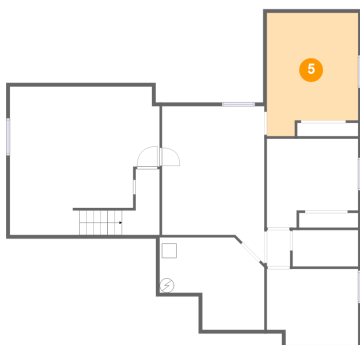
4 Floor 1 - Room - Unfinished



Dimensions: 12'7" x 10'6"
Area: 127 sq. ft
Counted as living area: No

Heated: Yes
Finished: No
Enclosed: Yes
Contiguous: Yes
Permitted: Yes
Wet space: No
Addition: No
Conversion: No

5 Floor 1 - Bedroom - Unfinished

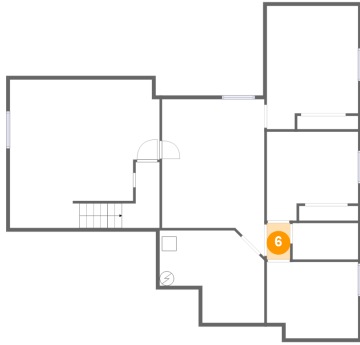


Dimensions: 12'7" x 17'0"
Area: 195 sq. ft
Counted as living area: No

Heated: Yes
Finished: No
Enclosed: Yes
Contiguous: Yes
Permitted: Yes
Wet space: No
Addition: No
Conversion: No

1484 Foxmore Street, Pocatello, Bannock County,
Idaho, United States, 83204

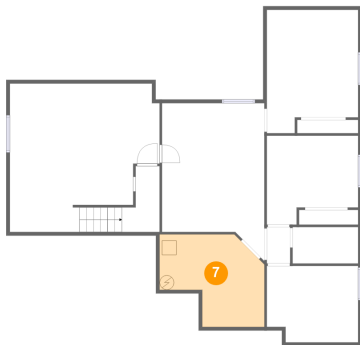
6 Floor 1 - Hall



Dimensions: 3'3" x 5'0"
Area: 16 sq. ft
Counted as living area: No

Heated: Yes
Finished: No
Enclosed: Yes
Contiguous: Yes
Permitted: Yes
Wet space: No
Addition: No
Conversion: No

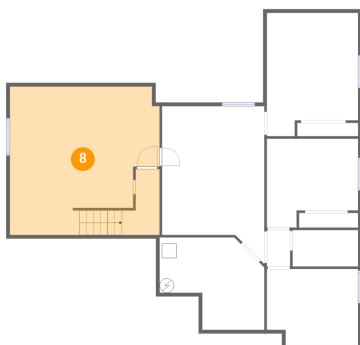
7 Floor 1 - Electrical Room



Dimensions: 14'5" x 12'9"
Area: 145 sq. ft
Counted as living area: No

Heated: No
Finished: No
Enclosed: Yes
Contiguous: Yes
Permitted: Yes
Wet space: No
Addition: No
Conversion: No

8 Floor 1 - Recreation Room

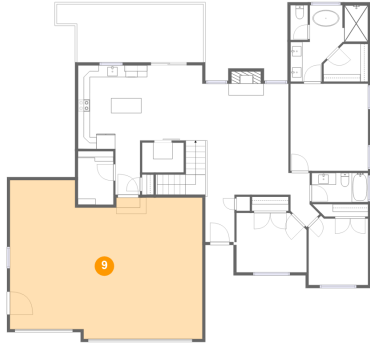


Dimensions: 20'7" x 20'5"
Area: 418 sq. ft
Counted as living area: Yes

Heated: Yes
Finished: Yes
Enclosed: Yes
Contiguous: Yes
Permitted: Yes
Wet space: No
Addition: No
Conversion: No

**1484 Foxmore Street, Pocatello, Bannock County,
Idaho, United States, 83204**

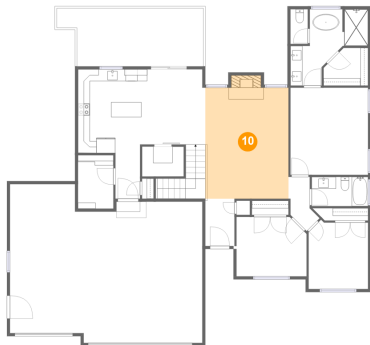
9 Floor 2 - Garage



Dimensions: 32'5" x 25'1"
Area: 769 sq. ft
Counted as living area: No

Heated: No
Finished: No
Enclosed: Yes
Contiguous: Yes
Permitted: Yes
Wet space: No
Addition: No
Conversion: No

10 Floor 2 - Living Room



Dimensions: 14'0" x 18'8"
Area: 272 sq. ft
Counted as living area: Yes

Heated: Yes
Finished: Yes
Enclosed: Yes
Contiguous: Yes
Permitted: Yes
Wet space: No
Addition: No
Conversion: No

11 Floor 2 - Bath

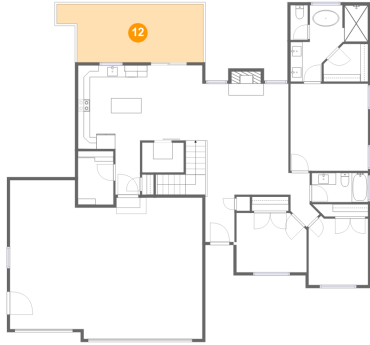


Dimensions: 9'6" x 4'11"
Area: 47 sq. ft
Counted as living area: Yes

Heated: Yes
Finished: Yes
Enclosed: Yes
Contiguous: Yes
Permitted: Yes
Wet space: Yes
Addition: No
Conversion: No

**1484 Foxmore Street, Pocatello, Bannock County,
Idaho, United States, 83204**

12 Floor 2 - Balcony



Dimensions: 24'8" x 9'9"
Area: 219 sq. ft
Counted as living area: No

Heated: No
Finished: Yes
Enclosed: No
Contiguous: Yes
Permitted: Yes
Wet space: No
Addition: No
Conversion: No

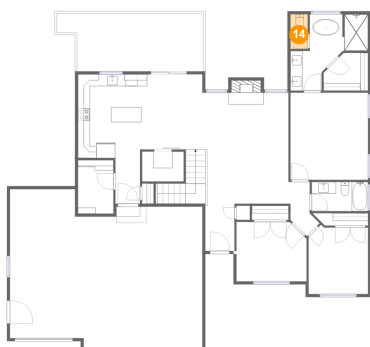
13 Floor 2 - W.I.C.



Dimensions: 7'6" x 6'4"
Area: 42 sq. ft
Counted as living area: Yes

Heated: Yes
Finished: Yes
Enclosed: Yes
Contiguous: Yes
Permitted: Yes
Wet space: No
Addition: No
Conversion: No

14 Floor 2 - WC

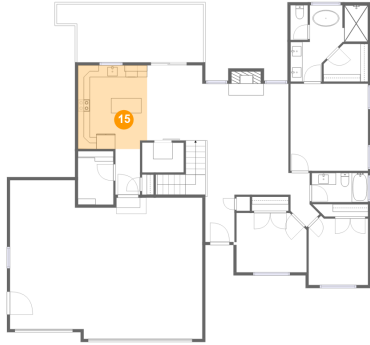


Dimensions: 2'11" x 5'10"
Area: 17 sq. ft
Counted as living area: Yes

Heated: Yes
Finished: Yes
Enclosed: Yes
Contiguous: Yes
Permitted: Yes
Wet space: Yes
Addition: No
Conversion: No

**1484 Foxmore Street, Pocatello, Bannock County,
Idaho, United States, 83204**

15 Floor 2 - Kitchen



Dimensions: 11'8" x 14'1"
Area: 162 sq. ft
Counted as living area: Yes

Heated: Yes
Finished: Yes
Enclosed: Yes
Contiguous: Yes
Permitted: Yes
Wet space: No
Addition: No
Conversion: No

16 Floor 2 - Hall



Dimensions: 3'10" x 9'1"
Area: 30 sq. ft
Counted as living area: Yes

Heated: Yes
Finished: Yes
Enclosed: Yes
Contiguous: Yes
Permitted: Yes
Wet space: No
Addition: No
Conversion: No

17 Floor 2 - Primary Bath

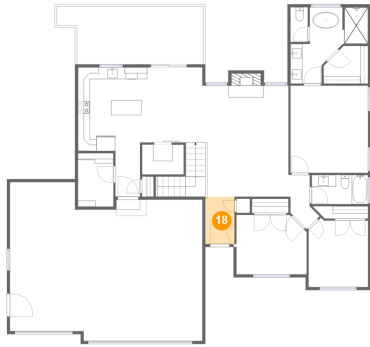


Dimensions: 9'10" x 12'10"
Area: 101 sq. ft
Counted as living area: Yes

Heated: Yes
Finished: Yes
Enclosed: Yes
Contiguous: Yes
Permitted: Yes
Wet space: Yes
Addition: No
Conversion: No

1484 Foxmore Street, Pocatello, Bannock County,
Idaho, United States, 83204

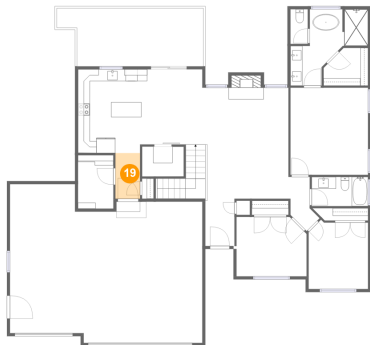
18 Floor 2 - Foyer



Dimensions: 4'11" x 7'11"
Area: 39 sq. ft
Counted as living area: Yes

Heated: Yes
Finished: Yes
Enclosed: Yes
Contiguous: Yes
Permitted: Yes
Wet space: No
Addition: No
Conversion: No

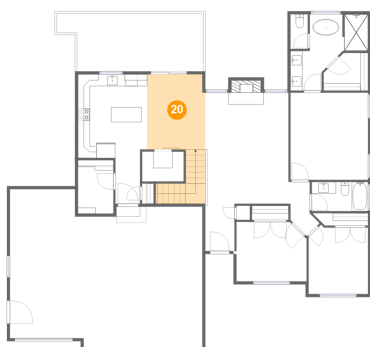
19 Floor 2 - Hall



Dimensions: 4'2" x 7'8"
Area: 32 sq. ft
Counted as living area: Yes

Heated: Yes
Finished: Yes
Enclosed: Yes
Contiguous: Yes
Permitted: Yes
Wet space: No
Addition: No
Conversion: No

20 Floor 2 - Dining Area



Dimensions: 9'10" x 12'7"
Area: 169 sq. ft
Counted as living area: Yes

Heated: Yes
Finished: Yes
Enclosed: Yes
Contiguous: Yes
Permitted: Yes
Wet space: No
Addition: No
Conversion: No

**1484 Foxmore Street, Pocatello, Bannock County,
Idaho, United States, 83204**

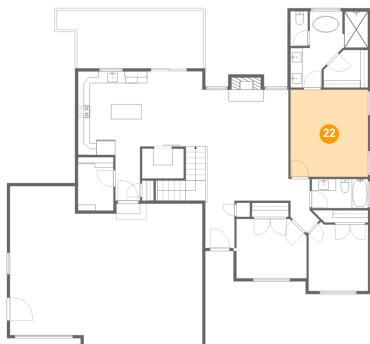
21 Floor 2 - Laundry



Dimensions: 6'0" x 9'0"
Area: 54 sq. ft
Counted as living area: Yes

Heated: Yes
Finished: Yes
Enclosed: Yes
Contiguous: Yes
Permitted: Yes
Wet space: No
Addition: No
Conversion: No

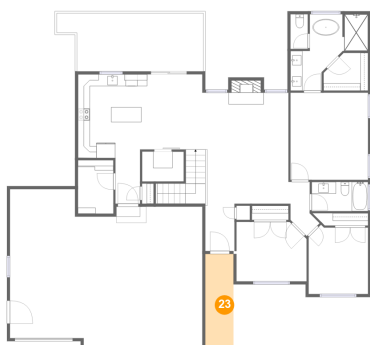
22 Floor 2 - Primary Bedroom



Dimensions: 13'1" x 14'8"
Area: 191 sq. ft
Counted as living area: Yes

Heated: Yes
Finished: Yes
Enclosed: Yes
Contiguous: Yes
Permitted: Yes
Wet space: No
Addition: No
Conversion: No

23 Floor 2 - Porch

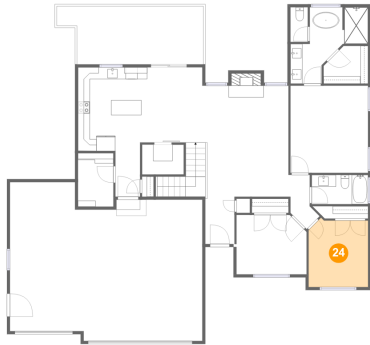


Dimensions: 4'9" x 16'3"
Area: 77 sq. ft
Counted as living area: No

Heated: No
Finished: Yes
Enclosed: No
Contiguous: Yes
Permitted: Yes
Wet space: No
Addition: No
Conversion: No

1484 Foxmore Street, Pocatello, Bannock County,
Idaho, United States, 83204

24 Floor 2 - Bedroom



Dimensions: 10'0" x 11'8"
Area: 111 sq. ft
Counted as living area: Yes

Heated: Yes
Finished: Yes
Enclosed: Yes
Contiguous: Yes
Permitted: Yes
Wet space: No
Addition: No
Conversion: No

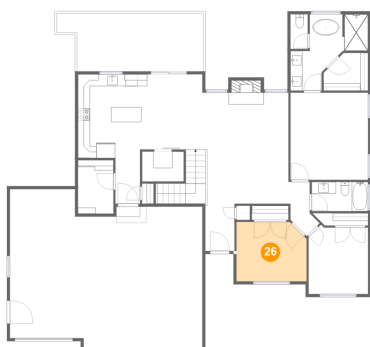
25 Floor 2 - Pantry



Dimensions: 7'0" x 5'1"
Area: 36 sq. ft
Counted as living area: Yes

Heated: Yes
Finished: Yes
Enclosed: Yes
Contiguous: Yes
Permitted: Yes
Wet space: No
Addition: No
Conversion: No

26 Floor 2 - Bedroom



Dimensions: 11'10" x 10'0"
Area: 114 sq. ft
Counted as living area: Yes

Heated: Yes
Finished: Yes
Enclosed: Yes
Contiguous: Yes
Permitted: Yes
Wet space: No
Addition: No
Conversion: No