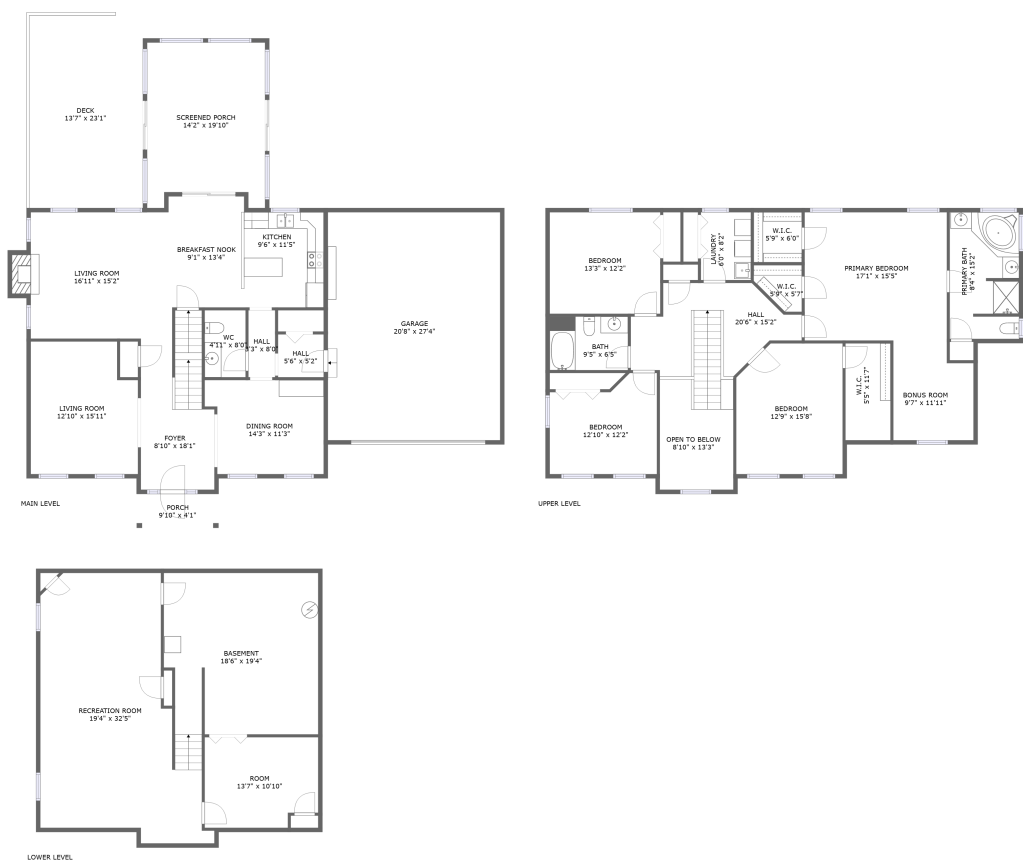


Home report

211 White Oak Circle, North Cornwall Township, Lebanon,
Lebanon County, Pennsylvania, United States, 17042



Total Area: 3337 sq. ft

Below Ground: 674 sq. ft, Floor 2: 1139 sq. ft, Floor 3: 1524 sq. ft
Excluded: Basement 361 sq. ft, Garage 564 sq. ft, Outdoor Porch Screen 261 sq. ft,
Outdoor Porch 40 sq. ft, Outdoor Deck 310 sq. ft, Fireplace 13 sq. ft, Opentobelow 99 sq.
ft, Low Ceiling 10 sq. ft, Walls: 284 sq. ft

Property summary

**3**
Floors

**4**
Bedrooms

**2**
Bathrooms

Home report

**211 White Oak Circle, North Cornwall Township, Lebanon,
Lebanon County, Pennsylvania, United States, 17042**



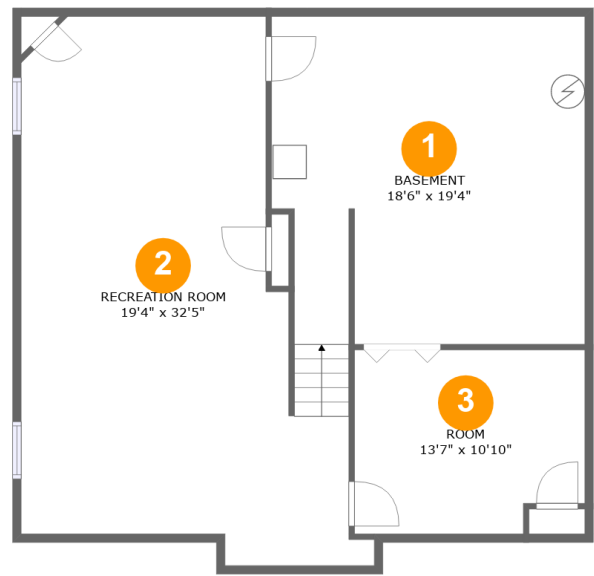
1
Half baths



1
Garages

Home report

211 White Oak Circle, North Cornwall Township, Lebanon,
Lebanon County, Pennsylvania, United States, 17042



Room dimensions

Floor 1 Below ground Total:674sqft Excluded: 361sqft

#		Max Dimensions	sqft	Included
1	Basement	18'6" x 19'4"	358 sq. ft	No
2	Recreation Room	19'4" x 32'5"	498 sq. ft	Yes
3	Room	13'7" x 10'10"	141 sq. ft	Yes

Home report

211 White Oak Circle, North Cornwall Township, Lebanon,
Lebanon County, Pennsylvania, United States, 17042



Room dimensions

Floor 2 Total:1139sqft Excluded: 1188sqft

#		Max Dimensions	sqft	Included
4	Hall	5'6" x 5'2"	28 sq. ft	Yes
5	Screened Porch	14'2" x 19'10"	261 sq. ft	No
6	Breakfast Nook	9'1" x 13'4"	121 sq. ft	Yes
7	Porch	9'10" x 4'1"	40 sq. ft	No
8	Deck	13'7" x 23'1"	310 sq. ft	No
9	Living Room	16'11" x 15'2"	263 sq. ft	Yes
10	Kitchen	9'6" x 11'5"	109 sq. ft	Yes
11	Hall	3'3" x 8'0"	26 sq. ft	Yes
12	Dining Room	14'3" x 11'3"	149 sq. ft	Yes
13	WC	4'11" x 8'0"	39 sq. ft	Yes
14	Garage	20'8" x 27'4"	564 sq. ft	No

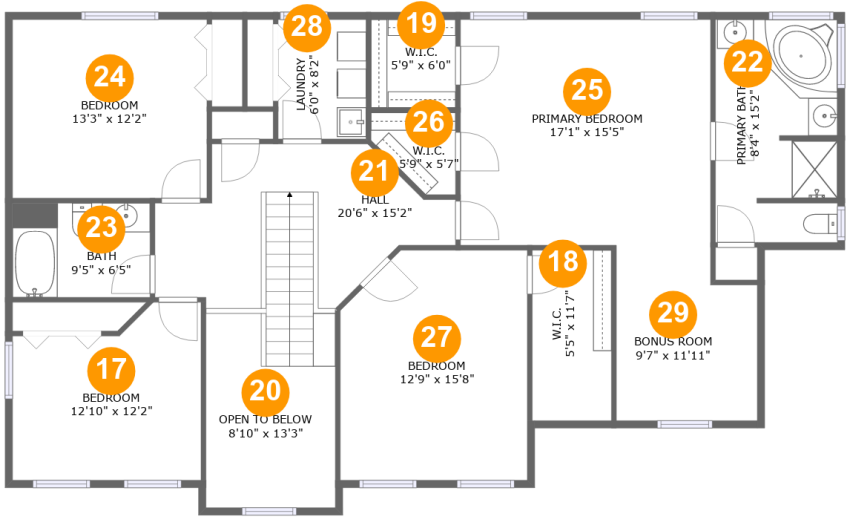
Home report

211 White Oak Circle, North Cornwall Township, Lebanon,
Lebanon County, Pennsylvania, United States, 17042

#		Max Dimensions	sqft	Included
15	Foyer	8'10" x 18'1"	156 sq. ft	Yes
16	Living Room	12'10" x 15'11"	193 sq. ft	Yes

Home report

211 White Oak Circle, North Cornwall Township, Lebanon,
Lebanon County, Pennsylvania, United States, 17042



Room dimensions

Floor 3 Total:1524sqft Excluded: 109sqft

#		Max Dimensions	sqft	Included
17	Bedroom	12'10" x 12'2"	137 sq. ft	Yes
18	W.I.C.	5'5" x 11'7"	53 sq. ft	Yes
19	W.I.C.	5'9" x 6'0"	35 sq. ft	Yes
20	Open To Below	8'10" x 13'3"	99 sq. ft	No
21	Hall	20'6" x 15'2"	191 sq. ft	Yes
22	Primary Bath	8'4" x 15'2"	123 sq. ft	Yes
23	Bath	9'5" x 6'5"	60 sq. ft	Yes
24	Bedroom	13'3" x 12'2"	161 sq. ft	Yes
25	Primary Bedroom	17'1" x 15'5"	262 sq. ft	Yes
26	W.I.C.	5'9" x 5'7"	25 sq. ft	Yes
27	Bedroom	12'9" x 15'8"	192 sq. ft	Yes

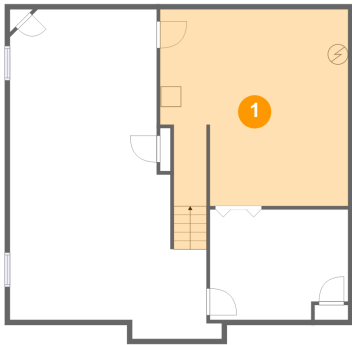
Home report

211 White Oak Circle, North Cornwall Township, Lebanon,
Lebanon County, Pennsylvania, United States, 17042

#		Max Dimensions	sqft	Included
28	Laundry	6'0" x 8'2"	49 sq. ft	Yes
29	Bonus Room	9'7" x 11'11"	106 sq. ft	Yes

211 White Oak Circle, North Cornwall Township, Lebanon,
Lebanon County, Pennsylvania, United States, 17042

1 Floor 1 - Basement



Max Dimensions: 18'6" x 19'4"
Calculated Area: 358 sq. ft
Included: No

Heated: Yes
Finished: No
Enclosed: Yes
Contiguous: Yes
Permitted: Yes
Wet space: No
Addition: No
Conversion: No

2 Floor 1 - Recreation Room



Max Dimensions: 19'4" x 32'5"
Calculated Area: 498 sq. ft
Included: Yes

Heated: Yes
Finished: Yes
Enclosed: Yes
Contiguous: Yes
Permitted: Yes
Wet space: No
Addition: No
Conversion: No

211 White Oak Circle, North Cornwall Township, Lebanon,
Lebanon County, Pennsylvania, United States, 17042

3 Floor 1 - Room



Max Dimensions: 13'7" x 10'10"
Calculated Area: 141 sq. ft
Included: Yes

Heated: Yes
Finished: Yes
Enclosed: Yes
Contiguous: Yes
Permitted: Yes
Wet space: No
Addition: No
Conversion: No

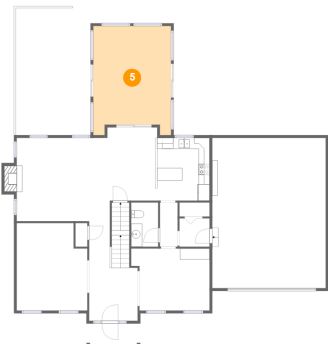
4 Floor 2 - Hall



Max Dimensions: 5'6" x 5'2"
Calculated Area: 28 sq. ft
Included: Yes

Heated: Yes
Finished: Yes
Enclosed: Yes
Contiguous: Yes
Permitted: Yes
Wet space: No
Addition: No
Conversion: No

5 Floor 2 - Screened Porch



Max Dimensions: 14'2" x 19'10"
Calculated Area: 261 sq. ft
Included: No

Heated: No
Finished: Yes
Enclosed: No
Contiguous: Yes
Permitted: Yes
Wet space: No
Addition: No
Conversion: No

211 White Oak Circle, North Cornwall Township, Lebanon,
Lebanon County, Pennsylvania, United States, 17042

6 Floor 2 - Breakfast Nook



Max Dimensions: 9'1" x 13'4"
Calculated Area: 121 sq. ft
Included: Yes

Heated: Yes
Finished: Yes
Enclosed: Yes
Contiguous: Yes
Permitted: Yes
Wet space: No
Addition: No
Conversion: No

7 Floor 2 - Porch



Max Dimensions: 9'10" x 4'1"
Calculated Area: 40 sq. ft
Included: No

Heated: No
Finished: Yes
Enclosed: No
Contiguous: Yes
Permitted: Yes
Wet space: No
Addition: No
Conversion: No

8 Floor 2 - Deck

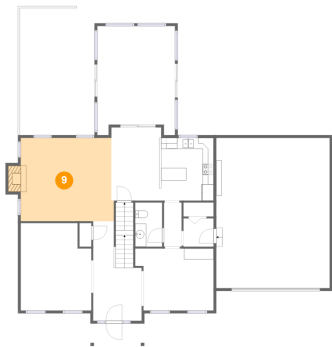


Max Dimensions: 13'7" x 23'1"
Calculated Area: 310 sq. ft
Included: No

Heated: No
Finished: Yes
Enclosed: No
Contiguous: Yes
Permitted: Yes
Wet space: No
Addition: No
Conversion: No

211 White Oak Circle, North Cornwall Township, Lebanon,
Lebanon County, Pennsylvania, United States, 17042

9 Floor 2 - Living Room



Max Dimensions: 16'11" x 15'2"
Calculated Area: 263 sq. ft
Included: Yes

Heated: Yes
Finished: Yes
Enclosed: Yes
Contiguous: Yes
Permitted: Yes
Wet space: No
Addition: No
Conversion: No

10 Floor 2 - Kitchen



Max Dimensions: 9'6" x 11'5"
Calculated Area: 109 sq. ft
Included: Yes

Heated: Yes
Finished: Yes
Enclosed: Yes
Contiguous: Yes
Permitted: Yes
Wet space: No
Addition: No
Conversion: No

11 Floor 2 - Hall



Max Dimensions: 3'3" x 8'0"
Calculated Area: 26 sq. ft
Included: Yes

Heated: Yes
Finished: Yes
Enclosed: Yes
Contiguous: Yes
Permitted: Yes
Wet space: No
Addition: No
Conversion: No

211 White Oak Circle, North Cornwall Township, Lebanon,
Lebanon County, Pennsylvania, United States, 17042

12 Floor 2 - Dining Room



Max Dimensions: 14'3" x 11'3"
Calculated Area: 149 sq. ft
Included: Yes

Heated: Yes
Finished: Yes
Enclosed: Yes
Contiguous: Yes
Permitted: Yes
Wet space: No
Addition: No
Conversion: No

13 Floor 2 - WC



Max Dimensions: 4'11" x 8'0"
Calculated Area: 39 sq. ft
Included: Yes

Heated: Yes
Finished: Yes
Enclosed: Yes
Contiguous: Yes
Permitted: Yes
Wet space: Yes
Addition: No
Conversion: No

14 Floor 2 - Garage

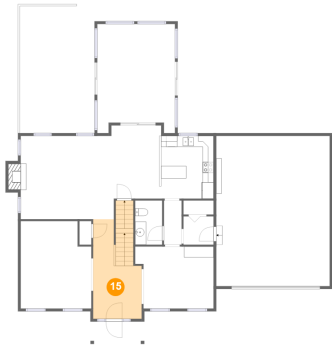


Max Dimensions: 20'8" x 27'4"
Calculated Area: 564 sq. ft
Included: No

Heated: No
Finished: No
Enclosed: Yes
Contiguous: Yes
Permitted: Yes
Wet space: No
Addition: No
Conversion: No

211 White Oak Circle, North Cornwall Township, Lebanon,
Lebanon County, Pennsylvania, United States, 17042

15 Floor 2 - Foyer



Max Dimensions: 8'10" x 18'1"
Calculated Area: 156 sq. ft
Included: Yes

Heated: Yes
Finished: Yes
Enclosed: Yes
Contiguous: Yes
Permitted: Yes
Wet space: No
Addition: No
Conversion: No

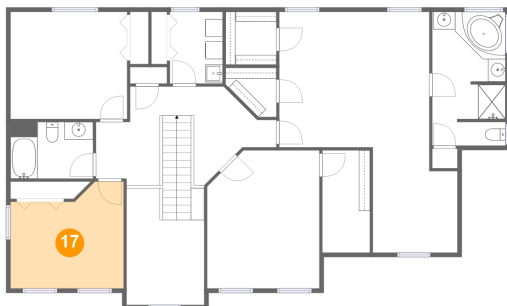
16 Floor 2 - Living Room



Max Dimensions: 12'10" x 15'11"
Calculated Area: 193 sq. ft
Included: Yes

Heated: Yes
Finished: Yes
Enclosed: Yes
Contiguous: Yes
Permitted: Yes
Wet space: No
Addition: No
Conversion: No

17 Floor 3 - Bedroom



Max Dimensions: 12'10" x 12'2"
Calculated Area: 137 sq. ft
Included: Yes

Heated: Yes
Finished: Yes
Enclosed: Yes
Contiguous: Yes
Permitted: Yes
Wet space: No
Addition: No
Conversion: No

Home report

211 White Oak Circle, North Cornwall Township, Lebanon,
Lebanon County, Pennsylvania, United States, 17042

18 Floor 3 - W.I.C.



Max Dimensions: 5'5" x 11'7"
Calculated Area: 53 sq. ft
Included: Yes

Heated: Yes
Finished: Yes
Enclosed: Yes
Contiguous: Yes
Permitted: Yes
Wet space: No
Addition: No
Conversion: No

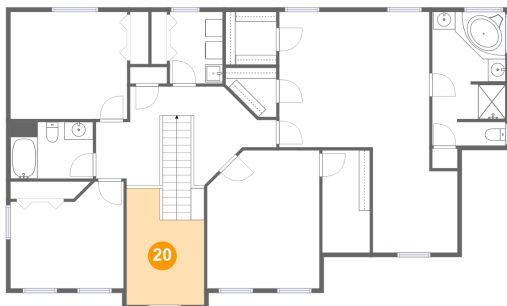
19 Floor 3 - W.I.C.



Max Dimensions: 5'9" x 6'0"
Calculated Area: 35 sq. ft
Included: Yes

Heated: Yes
Finished: Yes
Enclosed: Yes
Contiguous: Yes
Permitted: Yes
Wet space: No
Addition: No
Conversion: No

20 Floor 3 - Open To Below

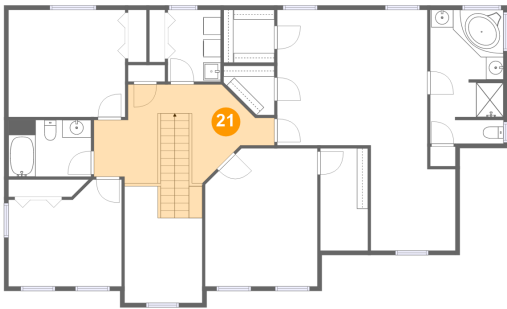


Max Dimensions: 8'10" x 13'3"
Calculated Area: 99 sq. ft
Included: No

Heated: No
Finished: No
Enclosed: No
Contiguous: Yes
Permitted: No
Wet space: No
Addition: No
Conversion: No

211 White Oak Circle, North Cornwall Township, Lebanon,
Lebanon County, Pennsylvania, United States, 17042

21 Floor 3 - Hall



Max Dimensions: 20'6" x 15'2"
Calculated Area: 191 sq. ft
Included: Yes

Heated: Yes
Finished: Yes
Enclosed: Yes
Contiguous: Yes
Permitted: Yes
Wet space: No
Addition: No
Conversion: No

22 Floor 3 - Primary Bath



Max Dimensions: 8'4" x 15'2"
Calculated Area: 123 sq. ft
Included: Yes

Heated: Yes
Finished: Yes
Enclosed: Yes
Contiguous: Yes
Permitted: Yes
Wet space: Yes
Addition: No
Conversion: No

23 Floor 3 - Bath



Max Dimensions: 9'5" x 6'5"
Calculated Area: 60 sq. ft
Included: Yes

Heated: Yes
Finished: Yes
Enclosed: Yes
Contiguous: Yes
Permitted: Yes
Wet space: Yes
Addition: No
Conversion: No

211 White Oak Circle, North Cornwall Township, Lebanon,
Lebanon County, Pennsylvania, United States, 17042

24 Floor 3 - Bedroom



Max Dimensions: 13'3" x 12'2"
Calculated Area: 161 sq. ft
Included: Yes

Heated: Yes
Finished: Yes
Enclosed: Yes
Contiguous: Yes
Permitted: Yes
Wet space: No
Addition: No
Conversion: No

25 Floor 3 - Primary Bedroom



Max Dimensions: 17'1" x 15'5"
Calculated Area: 262 sq. ft
Included: Yes

Heated: Yes
Finished: Yes
Enclosed: Yes
Contiguous: Yes
Permitted: Yes
Wet space: No
Addition: No
Conversion: No

26 Floor 3 - W.I.C.



Max Dimensions: 5'9" x 5'7"
Calculated Area: 25 sq. ft
Included: Yes

Heated: Yes
Finished: Yes
Enclosed: Yes
Contiguous: Yes
Permitted: Yes
Wet space: No
Addition: No
Conversion: No

Home report

211 White Oak Circle, North Cornwall Township, Lebanon,
Lebanon County, Pennsylvania, United States, 17042

27 Floor 3 - Bedroom



Max Dimensions: 12'9" x 15'8"
Calculated Area: 192 sq. ft
Included: Yes

Heated: Yes
Finished: Yes
Enclosed: Yes
Contiguous: Yes
Permitted: Yes
Wet space: No
Addition: No
Conversion: No

28 Floor 3 - Laundry



Max Dimensions: 6'0" x 8'2"
Calculated Area: 49 sq. ft
Included: Yes

Heated: Yes
Finished: Yes
Enclosed: Yes
Contiguous: Yes
Permitted: Yes
Wet space: No
Addition: No
Conversion: No

29 Floor 3 - Bonus Room



Max Dimensions: 9'7" x 11'11"
Calculated Area: 106 sq. ft
Included: Yes

Heated: Yes
Finished: Yes
Enclosed: Yes
Contiguous: Yes
Permitted: Yes
Wet space: No
Addition: No
Conversion: No