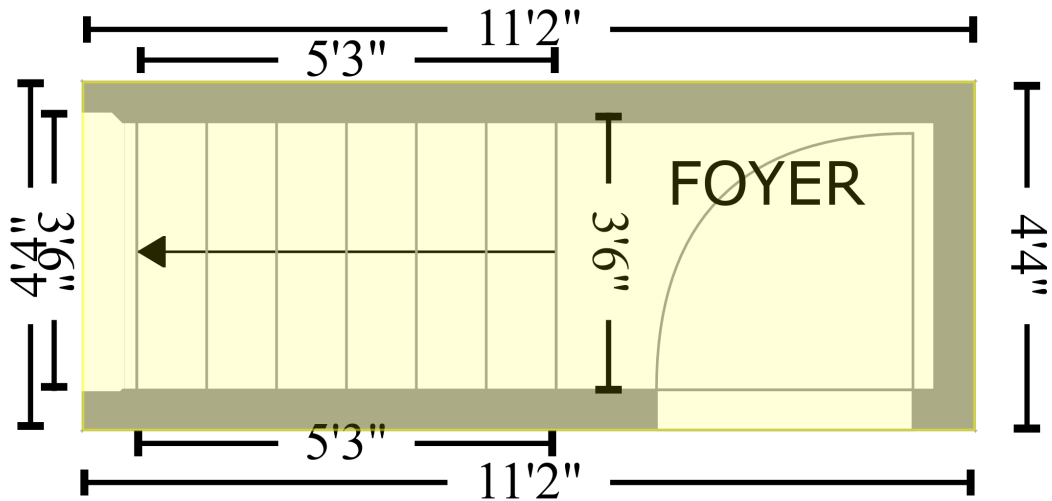


Level 1 - Below Grade

# FLOOR 1

[AREA: 49]



Space	Area (sq. ft)	Calculation <small>Coordinate Polygon Area Algorithm using inches</small>
FLOOR 1 (Living area)	49	$-((265.3 + 265.3) * (222.3 - 274.5) + (265.3 + 131.5) * (274.5 - 274.5) + (131.5 + 131.5) * (274.5 - 222.3) + (131.5 + 265.3) * (222.3 - 222.3)) * 0.5 * 0.00694$

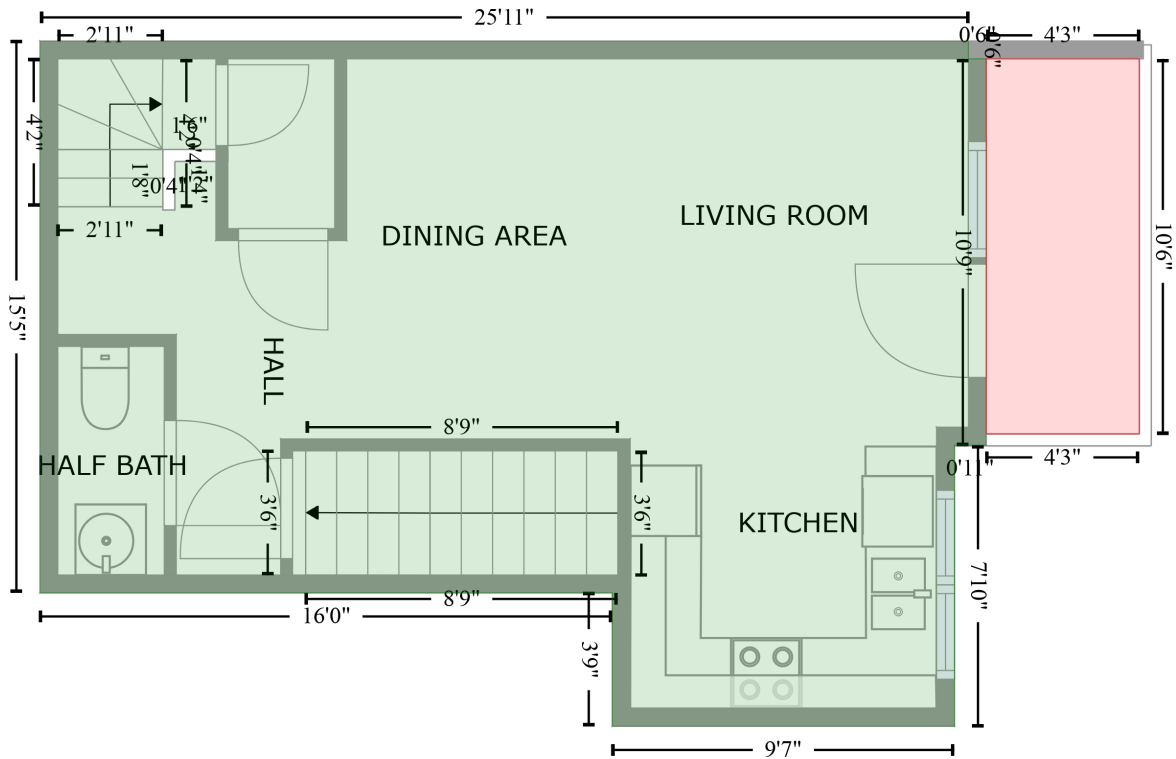
# 2468 Post Road, River Oaks, Oakville, Halton County, Ontario, Canada, L6H 0J2, 14

Gross Living Area: 898 sq. ft

## Level 2

FLOOR 2  
[AREA: 438]

BALCONY (1)  
[AREA: 45]



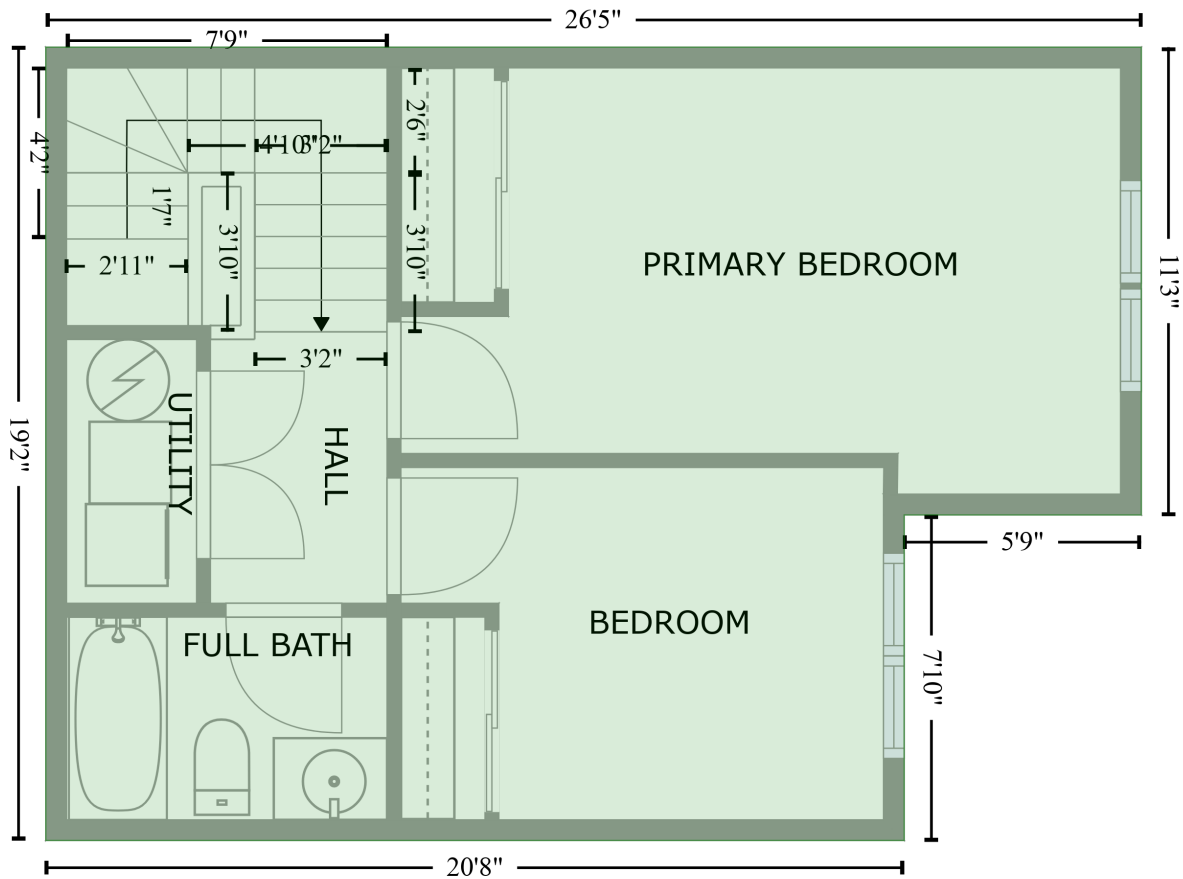
Space	Area (sq. ft)	Calculation <small>Coordinate Polygon Area Algorithm using inches</small>
FLOOR 2 (Living area)	438	$-\left((319.9 + 319.9) * (89.7 - 95.7) + (319.9 + 325.9) * (95.7 - 95.7) + (325.9 + 325.9) * (95.7 - 225) + (325.9 + 315.2) * (225 - 225) + (315.2 + 315.2) * (225 - 319.2) + (315.2 + 200.6) * (319.2 - 319.2) + (200.6 + 200.6) * (319.2 - 274.5) + (200.6 + 8.9) * (274.5 - 274.5) + (8.9 + 8.9) * (274.5 - 89.7) + (8.9 + 319.9) * (89.7 - 89.7)\right) * 0.5 * 0.00694 + -\left((67.8 + 50.1) * (126 - 126) + (50.1 + 50.1) * (126 - 146.3) + (50.1 + 54.1) * (146.3 - 146.3) + (54.1 + 54.1) * (146.3 - 130) + (54.1 + 67.8) * (130 - 130) + (67.8 + 67.8) * (130 - 126)\right) * 0.5 * 0.00694$
BALCONY (Non-living area)	45	$-\left((377.1 + 377.1) * (95.7 - 221.3) + (377.1 + 325.9) * (221.3 - 221.3) + (325.9 + 325.9) * (221.3 - 95.7) + (325.9 + 377.1) * (95.7 - 95.7)\right) * 0.5 * 0.00694$

# 2468 Post Road, River Oaks, Oakville, Halton County, Ontario, Canada, L6H 0J2, 14

Gross Living Area: 898 sq. ft

## Level 3

FLOOR 3  
[AREA: 460]



Space	Area (sq. ft)	Calculation <small>Coordinate Polygon Area Algorithm using inches</small>
FLOOR 3 (Living area)	460	$-\left((325.9 + 325.9) * (89.7 - 225) + (325.9 + 257.3) * (225 - 225) + (257.3 + 257.3) * (225 - 319.2) + (257.3 + 8.9) * (319.2 - 319.2) + (8.9 + 8.9) * (319.2 - 89.7) + (8.9 + 325.9) * (89.7 - 89.7)\right) * 0.5 * 0.00694$