



35 CHESAPEAKE AVE



Lainey Bonsell & Teresita Link

LTHOME.ca

Bringing your dreams home.

ROYAL LEPAGE
Estate Realty
BROKERAGE INDEPENDENTLY OWNED AND OPERATED



For more information on

35 CHESAPEAKE AVE



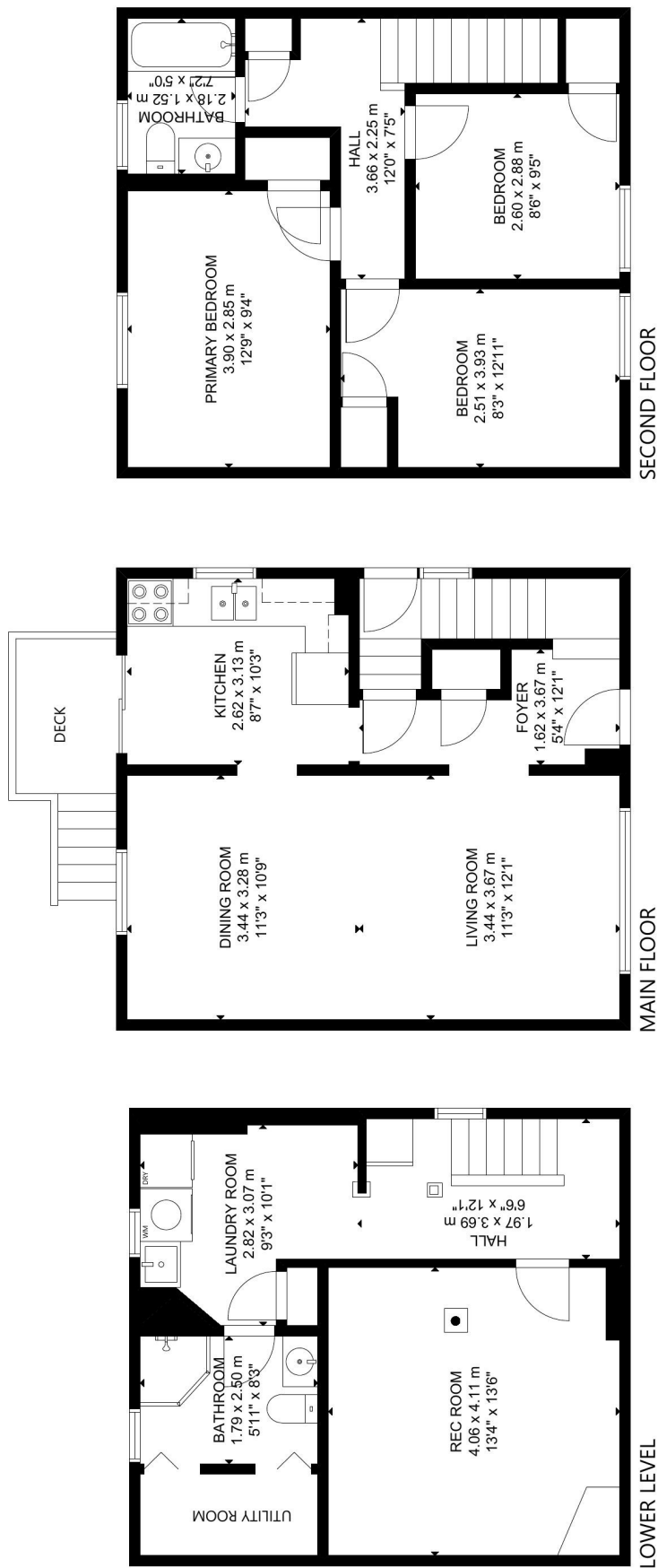
Welcome to this sweet sun-filled, solid brick home! Featuring fresh updates throughout, 3+1 bedrooms with separate entrance to large finished basement including second 3 pc. bathroom, laundry space & storage. Newly refinished hardwood on 2nd floor and brand new laminate flooring on main. Walkout from kitchen to deck and leafy green yard with separate entertaining space. Complete with private driveway for 2 vehicles on a quiet established street minutes away from the best of transit and Birchmount-Clairlea living.



Visit

www.LTHome.ca





GROSS INTERNAL AREA
 MAIN FLOOR: 43 m²/464 sq ft, SECOND FLOOR: 44 m²/472 sq ft
 LOWER LEVEL: 41 m²/445 sq ft
 TOTAL: 128 m²/1,381 sq ft
 SIZE AND DIMENSIONS ARE APPROXIMATE. ACTUAL MAY VARY.

Not intended to solicit buyers or sellers currently under contract with another Brokerage



Lainey Bonsell & Teresita Link

LTHOME.ca

Bringing your dreams home.

Presented by:

Heather Allin, Sales Representative

Royal LePage Estate Realty, Brokerage

Heather@LTHome.ca

416-690-5100