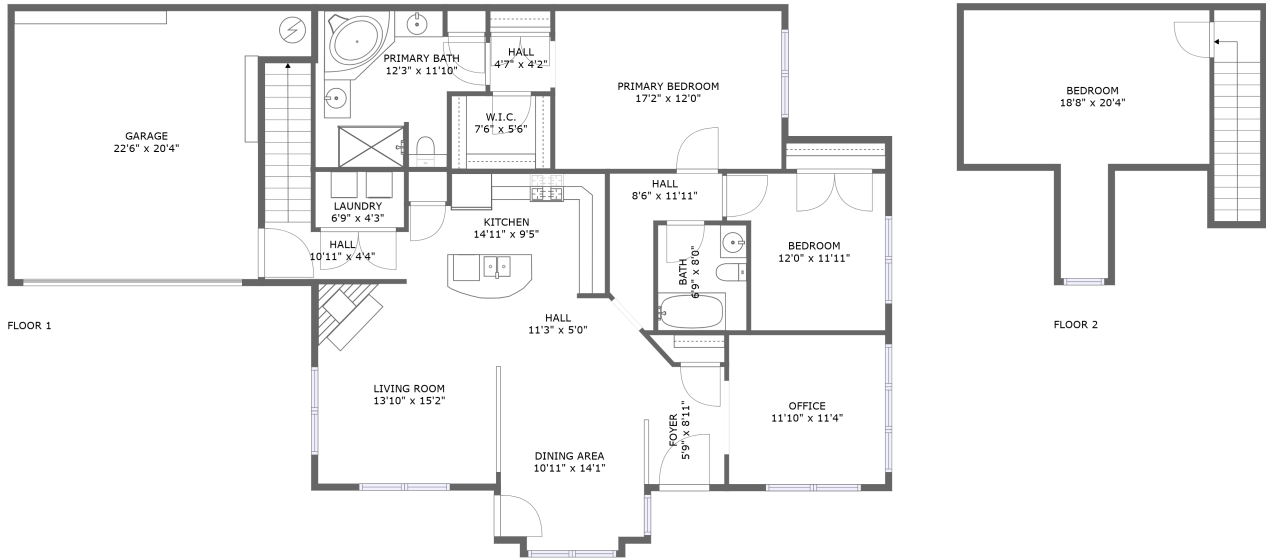



5947 E Stonepath Garden Dr, Chester, Virginia, United States



Property summary

 **1** Garages

 **3** Bedrooms

 **2** Bathrooms

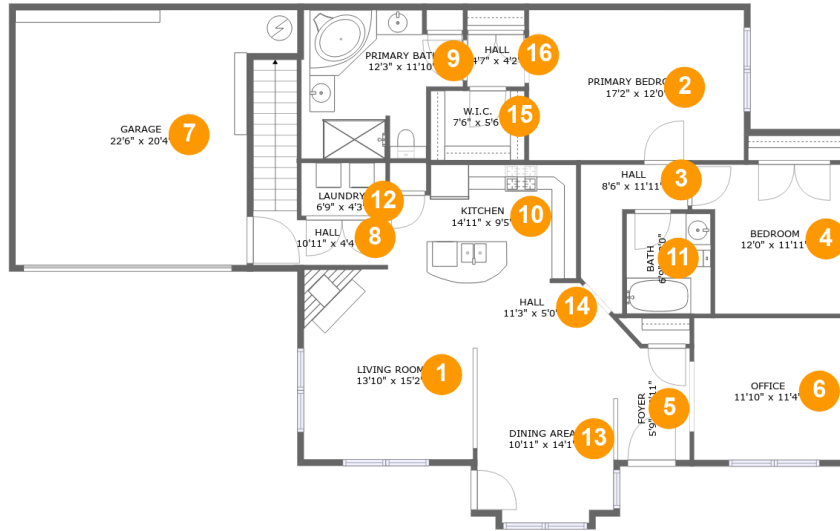
 **0** Half baths

 **2** Floors

 **1,938**
Gross living
area sqft

 **2,453**
Total sqft

5947 E Stonepath Garden Dr, Chester, Virginia, United States



Room dimensions

Floor 1

Total sqft: 2095

Living area: 1673

| # | | Dimensions | sqft | Counted as living area |
|----|-------------|----------------|------------|------------------------|
| 1 | Living Room | 13'10" x 15'2" | 207 sq. ft | Yes |
| 2 | Bedroom | 17'2" x 12'0" | 206 sq. ft | Yes |
| 3 | Hall | 8'6" x 11'11" | 55 sq. ft | Yes |
| 4 | Bedroom | 12'0" x 11'11" | 128 sq. ft | Yes |
| 5 | Entry | 5'9" x 8'11" | 53 sq. ft | Yes |
| 6 | Office | 11'10" x 11'4" | 135 sq. ft | Yes |
| 7 | Garage | 22'6" x 20'4" | 391 sq. ft | No |
| 8 | Hall | 10'11" x 4'4" | 84 sq. ft | Yes |
| 9 | Bath | 12'3" x 11'10" | 128 sq. ft | Yes |
| 10 | Kitchen | 14'11" x 9'5" | 128 sq. ft | Yes |
| 11 | Bath | 6'9" x 8'0" | 54 sq. ft | Yes |

**5947 E Stonepath Garden
Dr,Chester, Virginia, United States**

| # | | Dimensions | sqft | Counted as living area |
|----|-------------|----------------|------------|------------------------|
| 12 | Utility | 6'9" x 4'3" | 28 sq. ft | Yes |
| 13 | Dining Room | 10'11" x 14'1" | 144 sq. ft | Yes |
| 14 | Hall | 11'3" x 5'0" | 62 sq. ft | Yes |
| 15 | Cl | 7'6" x 5'6" | 42 sq. ft | Yes |
| 16 | Hall | 4'7" x 4'2" | 19 sq. ft | Yes |

5947 E Stonepath Garden Dr, Chester, Virginia, United States



Room dimensions

Floor 2

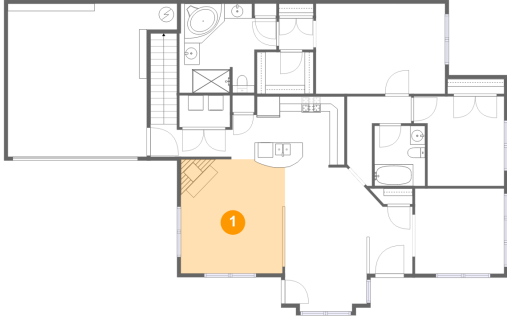
Total sqft: 358

Living area: 265

| # | | Dimensions | sqft | Counted as living area |
|----|---------|---------------|------------|------------------------|
| 17 | Bedroom | 18'8" x 20'4" | 235 sq. ft | Yes |

5947 E Stonepath Garden Dr, Chester, Virginia, United States

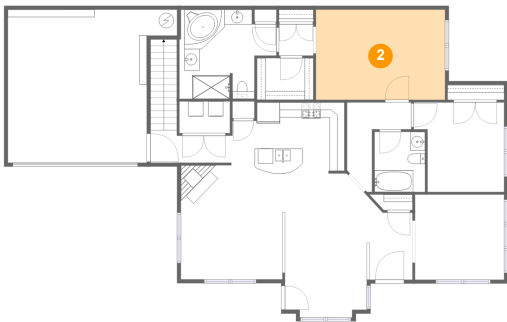
1 Floor 1 - Living Room



Dimensions: 13'10" x 15'2"
Area: 207 sq. ft
Counted as living area: Yes

Heated: Yes
Finished: Yes
Enclosed: Yes
Contiguous: Yes
Permitted: Yes
Wet space: No
Addition: No
Conversion: No

2 Floor 1 - Bedroom

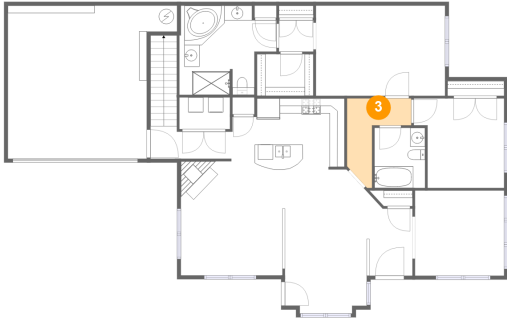


Dimensions: 17'2" x 12'0"
Area: 206 sq. ft
Counted as living area: Yes

Heated: Yes
Finished: Yes
Enclosed: Yes
Contiguous: Yes
Permitted: Yes
Wet space: No
Addition: No
Conversion: No

5947 E Stonepath Garden Dr, Chester, Virginia, United States

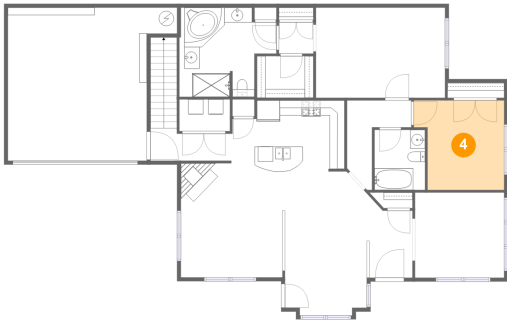
3 Floor 1 - Hall



Dimensions: 8'6" x 11'11"
Area: 55 sq. ft
Counted as living area: Yes

Heated: Yes
Finished: Yes
Enclosed: Yes
Contiguous: Yes
Permitted: Yes
Wet space: No
Addition: No
Conversion: No

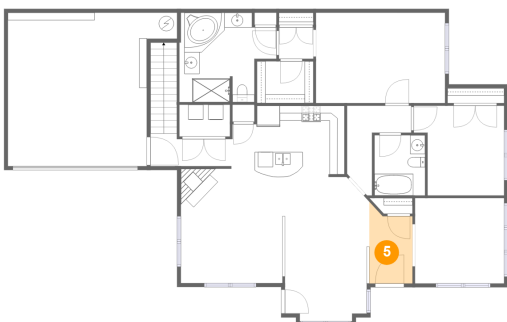
4 Floor 1 - Bedroom



Dimensions: 12'0" x 11'11"
Area: 128 sq. ft
Counted as living area: Yes

Heated: Yes
Finished: Yes
Enclosed: Yes
Contiguous: Yes
Permitted: Yes
Wet space: No
Addition: No
Conversion: No

5 Floor 1 - Entry

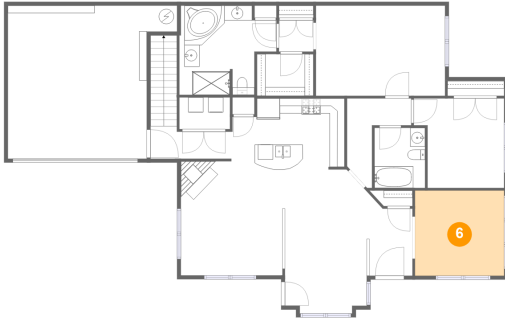


Dimensions: 5'9" x 8'11"
Area: 53 sq. ft
Counted as living area: Yes

Heated: Yes
Finished: Yes
Enclosed: Yes
Contiguous: Yes
Permitted: Yes
Wet space: No
Addition: No
Conversion: No

5947 E Stonepath Garden Dr, Chester, Virginia, United States

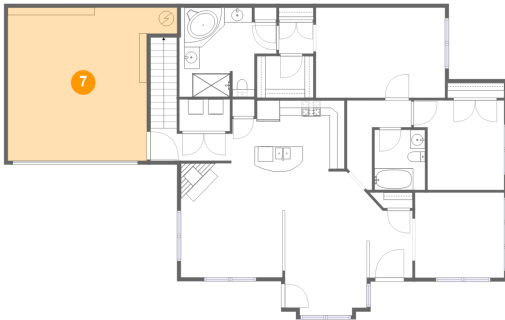
6 Floor 1 - Office



Dimensions: 11'10" x 11'4"
Area: 135 sq. ft
Counted as living area: Yes

Heated: Yes
Finished: Yes
Enclosed: Yes
Contiguous: Yes
Permitted: Yes
Wet space: No
Addition: No
Conversion: No

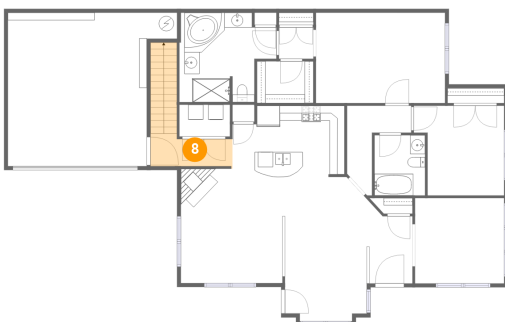
7 Floor 1 - Garage



Dimensions: 22'6" x 20'4"
Area: 391 sq. ft
Counted as living area: No

Heated: No
Finished: No
Enclosed: Yes
Contiguous: Yes
Permitted: Yes
Wet space: No
Addition: No
Conversion: No

8 Floor 1 - Hall

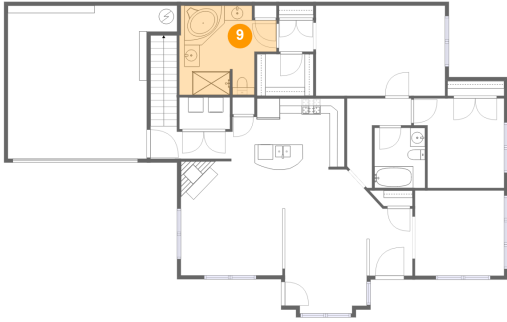


Dimensions: 10'11" x 4'4"
Area: 84 sq. ft
Counted as living area: Yes

Heated: Yes
Finished: Yes
Enclosed: Yes
Contiguous: Yes
Permitted: Yes
Wet space: No
Addition: No
Conversion: No

5947 E Stonepath Garden Dr, Chester, Virginia, United States

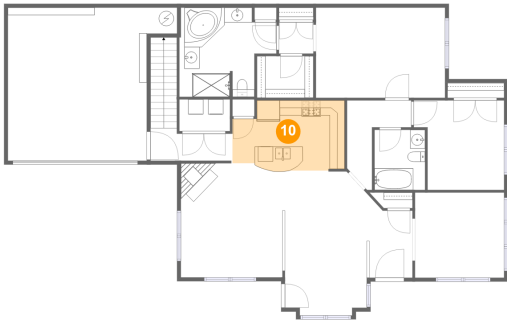
9 Floor 1 - Bath



Dimensions: 12'3" x 11'10"
Area: 128 sq. ft
Counted as living area: Yes

Heated: Yes
Finished: Yes
Enclosed: Yes
Contiguous: Yes
Permitted: Yes
Wet space: Yes
Addition: No
Conversion: No

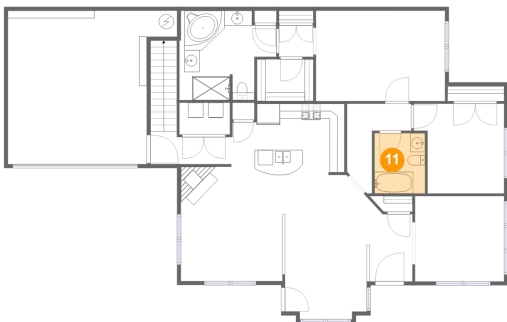
10 Floor 1 - Kitchen



Dimensions: 14'11" x 9'5"
Area: 128 sq. ft
Counted as living area: Yes

Heated: Yes
Finished: Yes
Enclosed: Yes
Contiguous: Yes
Permitted: Yes
Wet space: No
Addition: No
Conversion: No

11 Floor 1 - Bath

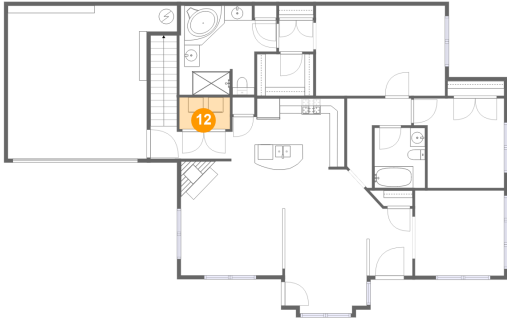


Dimensions: 6'9" x 8'0"
Area: 54 sq. ft
Counted as living area: Yes

Heated: Yes
Finished: Yes
Enclosed: Yes
Contiguous: Yes
Permitted: Yes
Wet space: Yes
Addition: No
Conversion: No

5947 E Stonepath Garden Dr, Chester, Virginia, United States

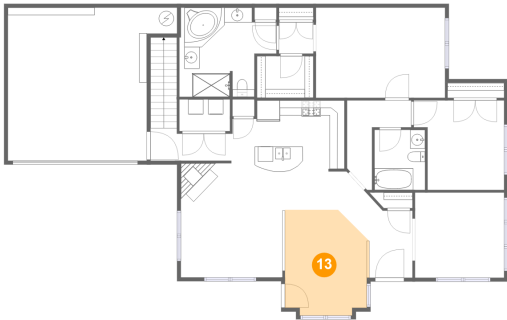
12 Floor 1 - Utility



Dimensions: 6'9" x 4'3"
Area: 28 sq. ft
Counted as living area: Yes

Heated: Yes
Finished: Yes
Enclosed: Yes
Contiguous: Yes
Permitted: Yes
Wet space: No
Addition: No
Conversion: No

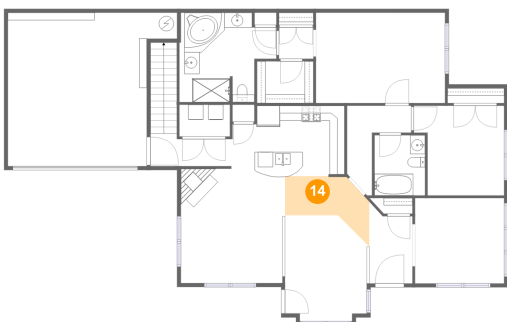
13 Floor 1 - Dining Room



Dimensions: 10'11" x 14'1"
Area: 144 sq. ft
Counted as living area: Yes

Heated: Yes
Finished: Yes
Enclosed: Yes
Contiguous: Yes
Permitted: Yes
Wet space: No
Addition: No
Conversion: No

14 Floor 1 - Hall

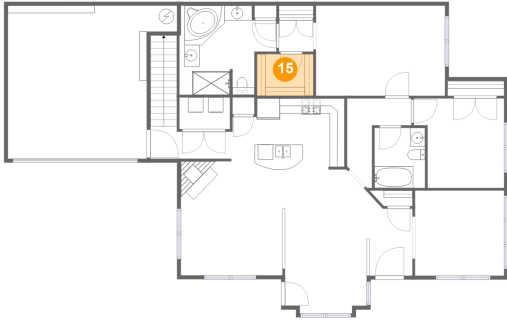


Dimensions: 11'3" x 5'0"
Area: 62 sq. ft
Counted as living area: Yes

Heated: Yes
Finished: Yes
Enclosed: Yes
Contiguous: Yes
Permitted: Yes
Wet space: No
Addition: No
Conversion: No

5947 E Stonepath Garden Dr, Chester, Virginia, United States

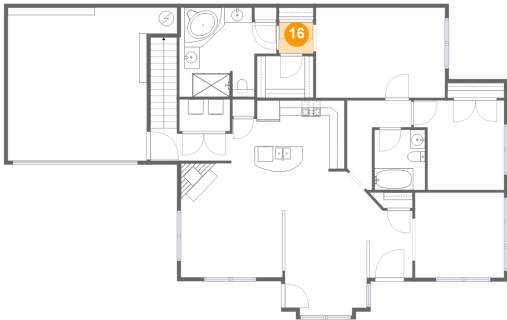
15 Floor 1 - Cl



Dimensions: 7'6" x 5'6"
Area: 42 sq. ft
Counted as living area: Yes

Heated: Yes
Finished: Yes
Enclosed: Yes
Contiguous: Yes
Permitted: Yes
Wet space: No
Addition: No
Conversion: No

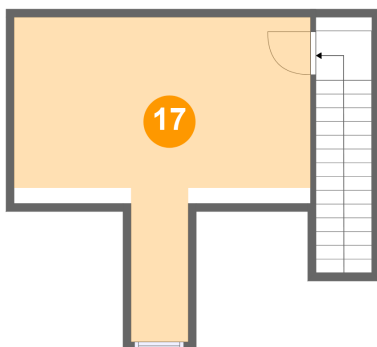
16 Floor 1 - Hall



Dimensions: 4'7" x 4'2"
Area: 19 sq. ft
Counted as living area: Yes

Heated: Yes
Finished: Yes
Enclosed: Yes
Contiguous: Yes
Permitted: Yes
Wet space: No
Addition: No
Conversion: No

17 Floor 2 - Bedroom



Dimensions: 18'8" x 20'4"
Area: 235 sq. ft
Counted as living area: Yes

Heated: Yes
Finished: Yes
Enclosed: Yes
Contiguous: Yes
Permitted: Yes
Wet space: No
Addition: No
Conversion: No