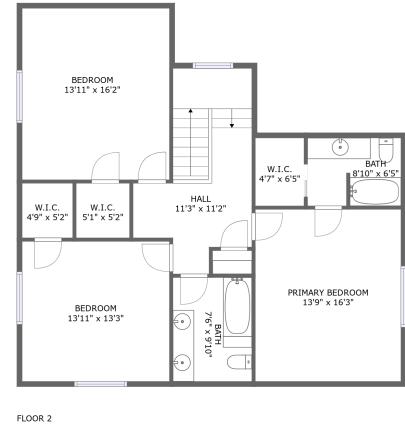
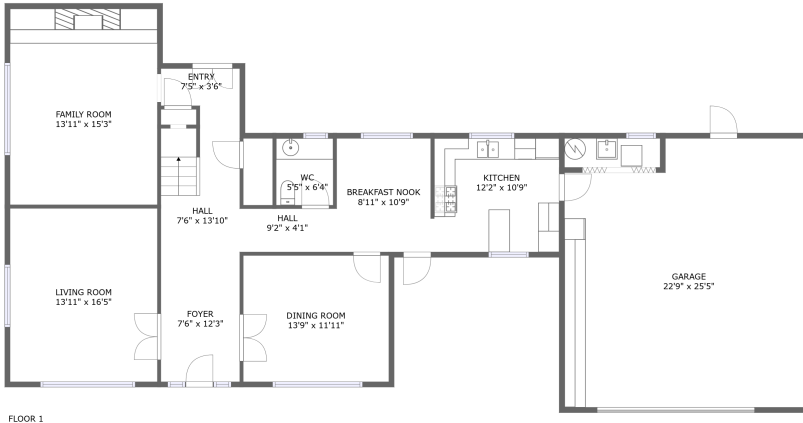




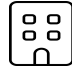




24 Fountain Square, Belleair, Pinellas County, Florida, United States, 33756

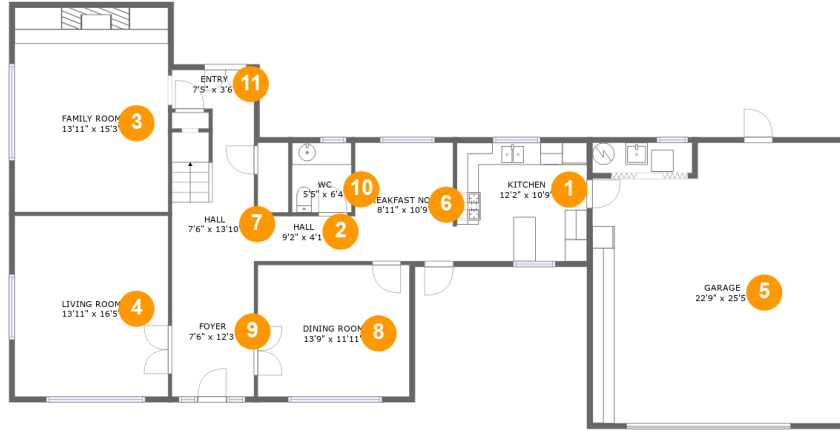


Property Summary

 **1** garages  **3** bedrooms  **2** bathrooms  **1** half baths

 **2** floors  **2,428** Gross Living Area sqft  **3,051** total sqft

24 Fountain Square, Belleair, Pinellas County, Florida, United States, 33756



Room Dimensions

Floor 1

Total sqft: 1932

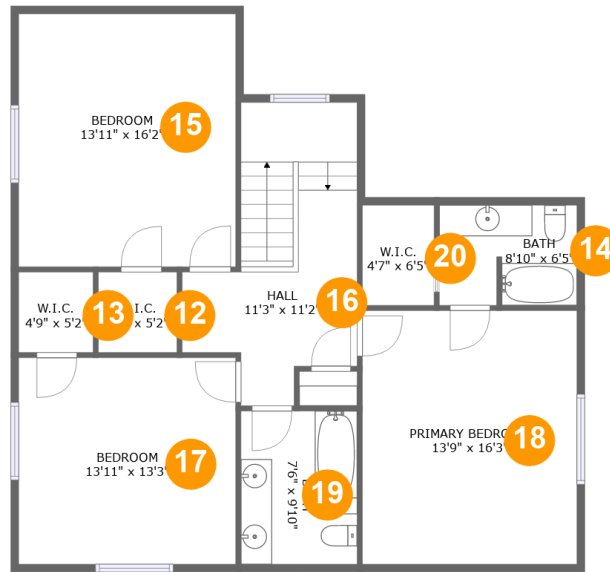
Living area: 1309

#	Room name	Dimensions	Area (sqft)	Counted as Living Area
1	Kitchen	12'2" x 10'9"	128 sq. ft	Yes
2	Hall	9'2" x 4'1"	38 sq. ft	Yes
3	Family Room	13'11" x 15'3"	258 sq. ft	Yes
4	Living Room	13'11" x 16'5"	229 sq. ft	Yes
5	Garage	22'9" x 25'5"	548 sq. ft	No
6	Breakfast Nook	8'11" x 10'9"	96 sq. ft	Yes
7	Hall	7'6" x 13'10"	94 sq. ft	Yes
8	Dining Room	13'9" x 11'11"	164 sq. ft	Yes
9	Foyer	7'6" x 12'3"	92 sq. ft	Yes
10	Wc	5'5" x 6'4"	34 sq. ft	Yes
11	Entry	7'5" x 3'6"	26 sq. ft	Yes

Scan captured on Wed, 31 Jul 2024 20:53:26 GMT

Information is calculated by CubiCasa technology; deemed highly reliable but not guaranteed.

24 Fountain Square, Belleair, Pinellas County, Florida, United States, 33756



Room Dimensions

Floor 2

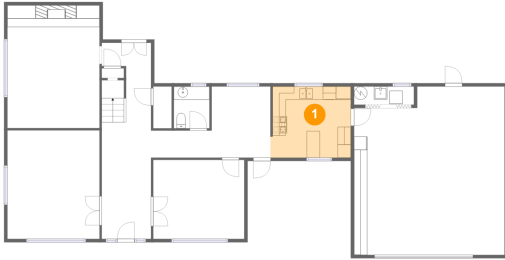
Total sqft: 1119

Living area: 1119

#	Room name	Dimensions	Area (sqft)	Counted as Living Area
12	W.i.c.	5'1" x 5'2"	26 sq. ft	Yes
13	W.i.c.	4'9" x 5'2"	25 sq. ft	Yes
14	Bath	8'10" x 6'5"	56 sq. ft	Yes
15	Bedroom	13'11" x 16'2"	226 sq. ft	Yes
16	Hall	11'3" x 11'2"	154 sq. ft	Yes
17	Bedroom	13'11" x 13'3"	184 sq. ft	Yes
18	Primary Bedroom	13'9" x 16'3"	224 sq. ft	Yes
19	Bath	7'6" x 9'10"	73 sq. ft	Yes
20	W.i.c.	4'7" x 6'5"	30 sq. ft	Yes

24 Fountain Square, Belleair, Pinellas County, Florida, United States, 33756

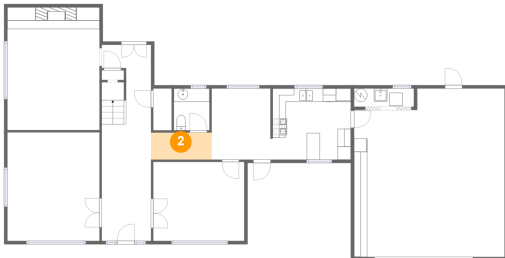
1 Floor 1 - Kitchen



Dimensions: 12'2" x 10'9"
Area: 128 sq. ft
Counted as Living Area:
Yes

Heated: Yes
Finished: Yes
Enclosed: Yes
Contiguous:
Yes
Permitted: Yes
Wet Space: No
Addition: No
Conversion: No

2 Floor 1 - Hall

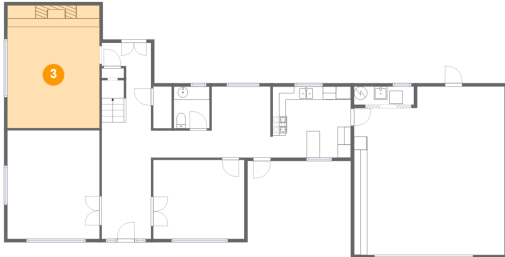


Dimensions: 9'2" x 4'1"
Area: 38 sq. ft
Counted as Living Area:
Yes

Heated: Yes
Finished: Yes
Enclosed: Yes
Contiguous:
Yes
Permitted: Yes
Wet Space: No
Addition: No
Conversion: No

24 Fountain Square, Belleair, Pinellas County, Florida, United States, 33756

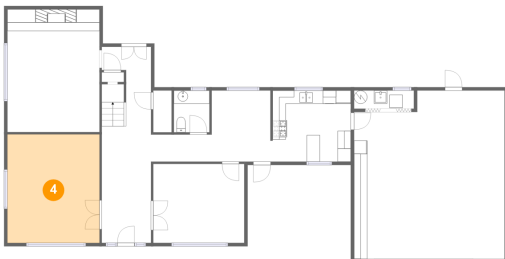
3 Floor 1 - Family Room



Dimensions: 13'11" x 15'3"
Area: 258 sq. ft
Counted as Living Area:
Yes

Heated: Yes
Finished: Yes
Enclosed: Yes
Contiguous:
Yes
Permitted: Yes
Wet Space: No
Addition: No
Conversion: No

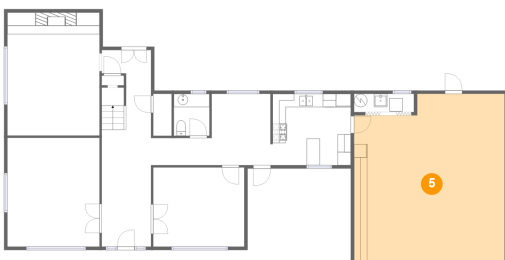
4 Floor 1 - Living Room



Dimensions: 13'11" x 16'5"
Area: 229 sq. ft
Counted as Living Area:
Yes

Heated: Yes
Finished: Yes
Enclosed: Yes
Contiguous:
Yes
Permitted: Yes
Wet Space: No
Addition: No
Conversion: No

5 Floor 1 - Garage

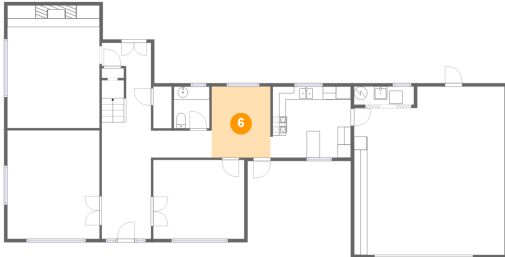


Dimensions: 22'9" x 25'5"
Area: 548 sq. ft
Counted as Living Area: No

Heated: No
Finished: No
Enclosed: Yes
Contiguous: Yes
Permitted: Yes
Wet Space: No
Addition: No
Conversion: No

24 Fountain Square, Belleair, Pinellas County, Florida, United States, 33756

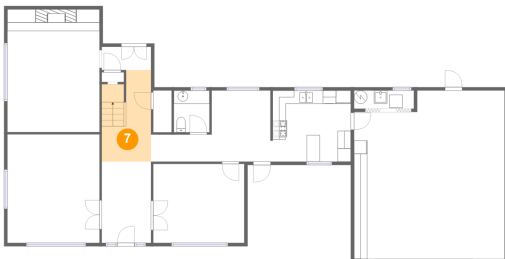
6 Floor 1 - Breakfast Nook



Dimensions: 8'11" x 10'9"
Area: 96 sq. ft
Counted as Living Area:
Yes

Heated: Yes
Finished: Yes
Enclosed: Yes
Contiguous:
Yes
Permitted: Yes
Wet Space: No
Addition: No
Conversion: No

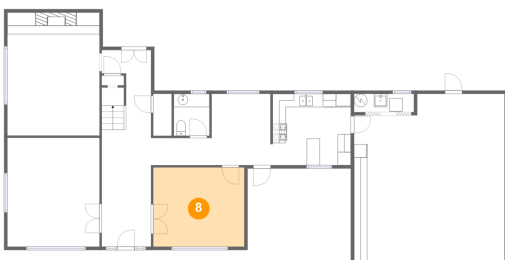
7 Floor 1 - Hall



Dimensions: 7'6" x 13'10"
Area: 94 sq. ft
Counted as Living Area:
Yes

Heated: Yes
Finished: Yes
Enclosed: Yes
Contiguous:
Yes
Permitted: Yes
Wet Space: No
Addition: No
Conversion: No

8 Floor 1 - Dining Room

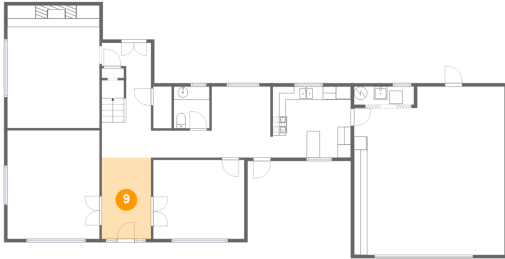


Dimensions: 13'9" x 11'11"
Area: 164 sq. ft
Counted as Living Area:
Yes

Heated: Yes
Finished: Yes
Enclosed: Yes
Contiguous:
Yes
Permitted: Yes
Wet Space: No
Addition: No
Conversion: No

24 Fountain Square, Belleair, Pinellas County, Florida, United States, 33756

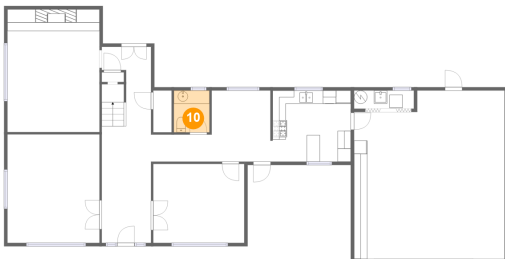
9 Floor 1 - Foyer



Dimensions: 7'6" x 12'3"
Area: 92 sq. ft
Counted as Living Area:
Yes

Heated: Yes
Finished: Yes
Enclosed: Yes
Contiguous:
Yes
Permitted: Yes
Wet Space: No
Addition: No
Conversion: No

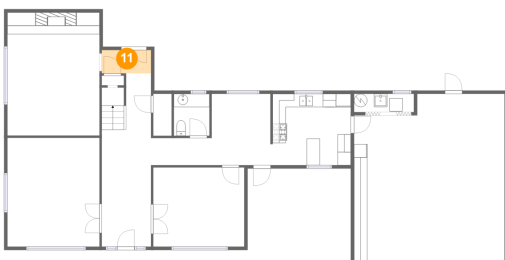
10 Floor 1 - Wc



Dimensions: 5'5" x 6'4"
Area: 34 sq. ft
Counted as Living Area:
Yes

Heated: Yes
Finished: Yes
Enclosed: Yes
Contiguous:
Yes
Permitted: Yes
Wet Space: Yes
Addition: No
Conversion: No

11 Floor 1 - Entry

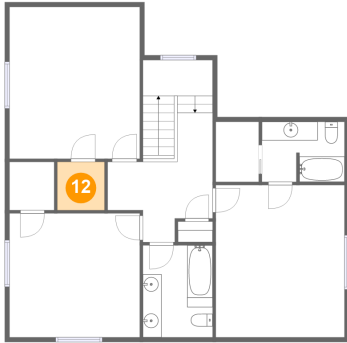


Dimensions: 7'5" x 3'6"
Area: 26 sq. ft
Counted as Living Area:
Yes

Heated: Yes
Finished: Yes
Enclosed: Yes
Contiguous:
Yes
Permitted: Yes
Wet Space: No
Addition: No
Conversion: No

24 Fountain Square, Belleair, Pinellas County, Florida, United States, 33756

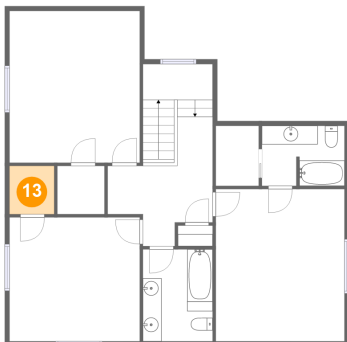
12 Floor 2 - W.i.c.



Dimensions: 5'1" x 5'2"
Area: 26 sq. ft
Counted as Living Area:
Yes

Heated: Yes
Finished: Yes
Enclosed: Yes
Contiguous:
Yes
Permitted: Yes
Wet Space: No
Addition: No
Conversion: No

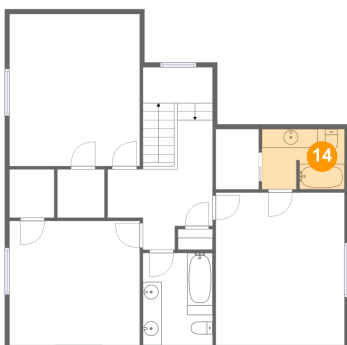
13 Floor 2 - W.i.c.



Dimensions: 4'9" x 5'2"
Area: 25 sq. ft
Counted as Living Area:
Yes

Heated: Yes
Finished: Yes
Enclosed: Yes
Contiguous:
Yes
Permitted: Yes
Wet Space: No
Addition: No
Conversion: No

14 Floor 2 - Bath

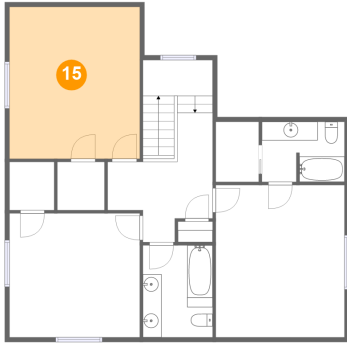


Dimensions: 8'10" x 6'5"
Area: 56 sq. ft
Counted as Living Area:
Yes

Heated: Yes
Finished: Yes
Enclosed: Yes
Contiguous:
Yes
Permitted: Yes
Wet Space: Yes
Addition: No
Conversion: No

24 Fountain Square, Belleair, Pinellas County, Florida, United States, 33756

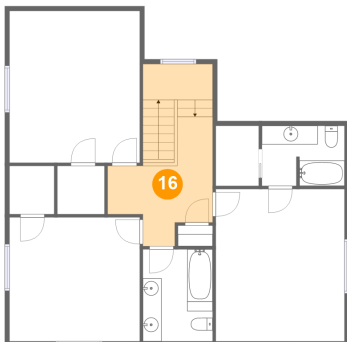
15 Floor 2 - Bedroom



Dimensions: 13'11" x 16'2"
Area: 226 sq. ft
Counted as Living Area:
Yes

Heated: Yes
Finished: Yes
Enclosed: Yes
Contiguous:
Yes
Permitted: Yes
Wet Space: No
Addition: No
Conversion: No

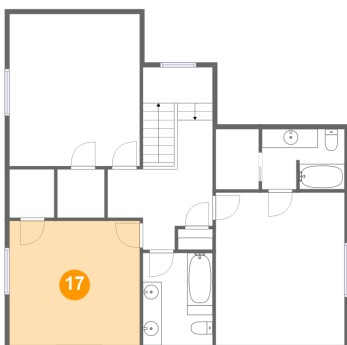
16 Floor 2 - Hall



Dimensions: 11'3" x 11'2"
Area: 154 sq. ft
Counted as Living Area:
Yes

Heated: Yes
Finished: Yes
Enclosed: Yes
Contiguous:
Yes
Permitted: Yes
Wet Space: No
Addition: No
Conversion: No

17 Floor 2 - Bedroom

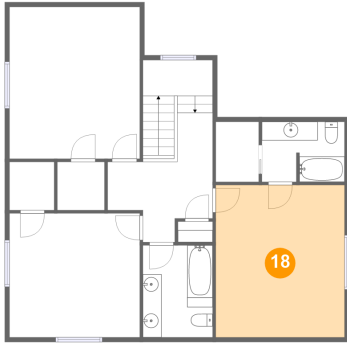


Dimensions: 13'11" x 13'3"
Area: 184 sq. ft
Counted as Living Area:
Yes

Heated: Yes
Finished: Yes
Enclosed: Yes
Contiguous:
Yes
Permitted: Yes
Wet Space: No
Addition: No
Conversion: No

24 Fountain Square, Belleair, Pinellas County, Florida, United States, 33756

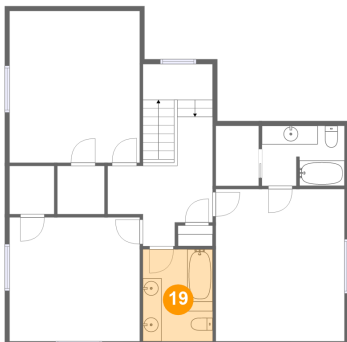
18 Floor 2 - Primary Bedroom



Dimensions: 13'9" x 16'3"
Area: 224 sq. ft
Counted as Living Area:
Yes

Heated: Yes
Finished: Yes
Enclosed: Yes
Contiguous:
Yes
Permitted: Yes
Wet Space: No
Addition: No
Conversion: No

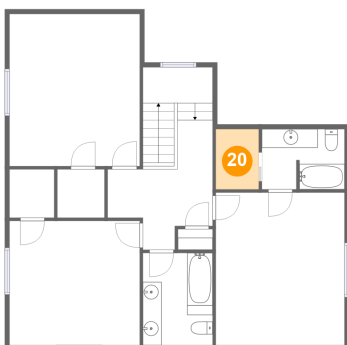
19 Floor 2 - Bath



Dimensions: 7'6" x 9'10"
Area: 73 sq. ft
Counted as Living Area:
Yes

Heated: Yes
Finished: Yes
Enclosed: Yes
Contiguous:
Yes
Permitted: Yes
Wet Space: Yes
Addition: No
Conversion: No

20 Floor 2 - W.i.c.



Dimensions: 4'7" x 6'5"
Area: 30 sq. ft
Counted as Living Area:
Yes

Heated: Yes
Finished: Yes
Enclosed: Yes
Contiguous:
Yes
Permitted: Yes
Wet Space: No
Addition: No
Conversion: No