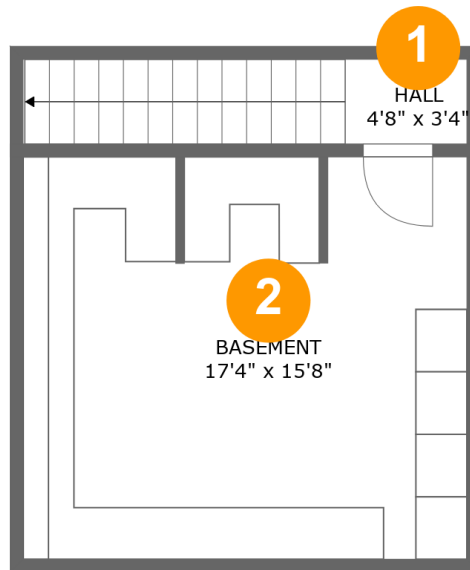


Home report

76346 Bryson Hesperia Road, Bradley, Monterey County, California, United States, 93426



Room dimensions

Floor 1 Below ground

Total:79sqft

Excluded: 297sqft

#		Max Dimensions	sqft	Included
1	Hall	4'8" x 3'4"	57 sq. ft	Yes
2	Basement	17'4" x 15'8"	269 sq. ft	No

Home report

76346 Bryson Hesperia Road, Bradley, Monterey County, California, United States, 93426



Room dimensions

Floor 2

Total:2659sqft

Excluded: 0sqft

#		Max Dimensions	sqft	Included
3	Bath	6'11" x 8'8"	59 sq. ft	Yes
4	Library	22'7" x 17'11"	391 sq. ft	Yes
5	Laundry	7'8" x 8'8"	66 sq. ft	Yes
6	Living Room	28'10" x 17'11"	510 sq. ft	Yes
7	Bedroom	14'1" x 12'10"	163 sq. ft	Yes
8	Office	14'7" x 12'11"	168 sq. ft	Yes
9	Pantry	5'5" x 8'6"	38 sq. ft	Yes
10	Kitchen	18'10" x 21'10"	351 sq. ft	Yes
11	Hall	23'5" x 13'1"	128 sq. ft	Yes
12	Dining Area	10'10" x 12'9"	139 sq. ft	Yes
13	Foyer	28'0" x 14'6"	393 sq. ft	Yes

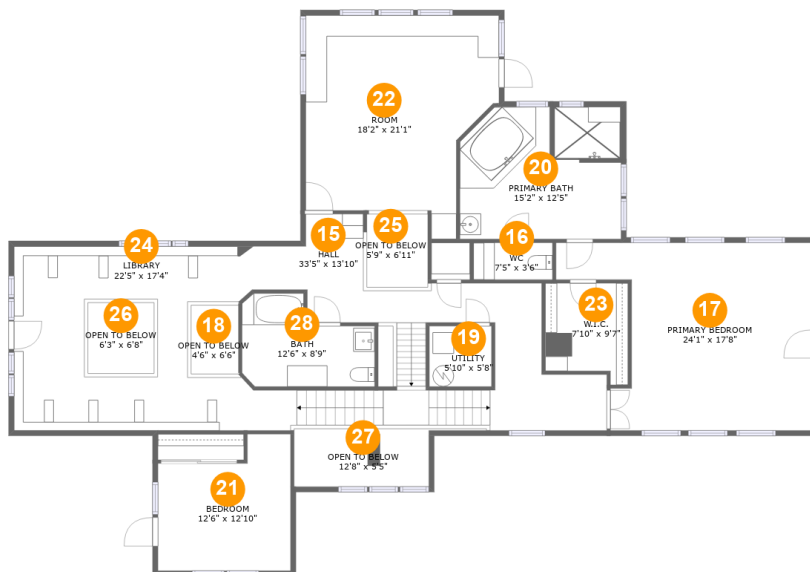
Home report

**76346 Bryson Hesperia Road, Bradley, Monterey County,
California, United States, 93426**

#		Max Dimensions	sqft	Included
14	Hall	5'1" x 9'4"	48 sq. ft	Yes

Home report

76346 Bryson Hesperia Road, Bradley, Monterey County, California, United States, 93426



Room dimensions

Floor 3

Total:2066sqft

Excluded: 149sqft

#		Max Dimensions	sqft	Included
15	Hall	33'5" x 13'10"	369 sq. ft	Yes
16	WC	7'5" x 3'6"	26 sq. ft	Yes
17	Primary Bedroom	24'1" x 17'8"	333 sq. ft	Yes
18	Open To Below	4'6" x 6'6"	29 sq. ft	No
19	Utility	5'10" x 5'8"	33 sq. ft	No
20	Primary Bath	15'2" x 12'5"	181 sq. ft	Yes
21	Bedroom	12'6" x 12'10"	137 sq. ft	Yes
22	Room	18'2" x 21'1"	306 sq. ft	Yes
23	W.I.C.	7'10" x 9'7"	67 sq. ft	Yes
24	Library	22'5" x 17'4"	378 sq. ft	Yes
25	Open To Below	5'9" x 6'11"	39 sq. ft	No

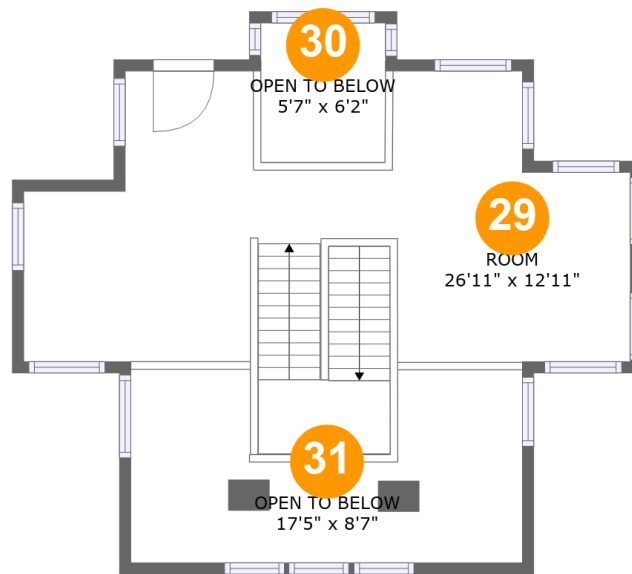
Home report

**76346 Bryson Hesperia Road, Bradley, Monterey County,
California, United States, 93426**

#		Max Dimensions	sqft	Included
26	Open To Below	6'3" x 6'8"	42 sq. ft	No
27	Open To Below	12'8" x 5'5"	69 sq. ft	No
28	Bath	12'6" x 8'9"	88 sq. ft	Yes

Home report

76346 Bryson Hesperia Road, Bradley, Monterey County, California, United States, 93426



Room dimensions

Floor 4

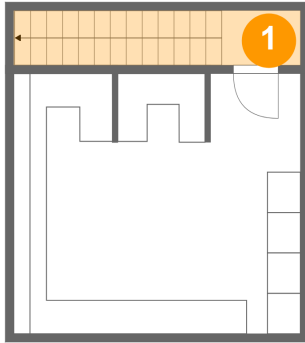
Total:341sqft

Excluded: 179sqft

#		Max Dimensions	sqft	Included
29	Room	26'11" x 12'11"	312 sq. ft	Yes
30	Open To Below	5'7" x 6'2"	34 sq. ft	No
31	Open To Below	17'5" x 8'7"	122 sq. ft	No

76346 Bryson Hesperia Road, Bradley, Monterey County,
California, United States, 93426

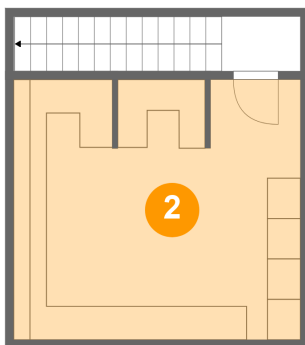
1 Floor 1 - Hall



Max Dimensions: 4'8" x 3'4"
Calculated Area: 57 sq. ft
Included: Yes

Heated: Yes
Finished: Yes
Enclosed: Yes
Contiguous: Yes
Permitted: Yes
Wet space: No
Addition: No
Conversion: No

2 Floor 1 - Basement



Max Dimensions: 17'4" x
15'8"
Calculated Area: 269 sq. ft
Included: No

Heated: Yes
Finished: No
Enclosed: Yes
Contiguous:
Yes
Permitted: Yes
Wet space: No
Addition: No
Conversion: No

76346 Bryson Hesperia Road, Bradley, Monterey County, California, United States, 93426

3 Floor 2 - Bath



Max Dimensions: 6'11" x 8'8"
Calculated Area: 59 sq. ft
Included: Yes

Heated: Yes
Finished: Yes
Enclosed: Yes
Contiguous: Yes
Permitted: Yes
Wet space: Yes
Addition: No
Conversion: No

4 Floor 2 - Library



Max Dimensions: 22'7" x 17'11"
Calculated Area: 391 sq. ft
Included: Yes

Heated: Yes
Finished: Yes
Enclosed: Yes
Contiguous: Yes
Permitted: Yes
Wet space: No
Addition: No
Conversion: No

5 Floor 2 - Laundry



Max Dimensions: 7'8" x 8'8"
Calculated Area: 66 sq. ft
Included: Yes

Heated: Yes
Finished: Yes
Enclosed: Yes
Contiguous: Yes
Permitted: Yes
Wet space: No
Addition: No
Conversion: No

76346 Bryson Hesperia Road, Bradley, Monterey County,
California, United States, 93426

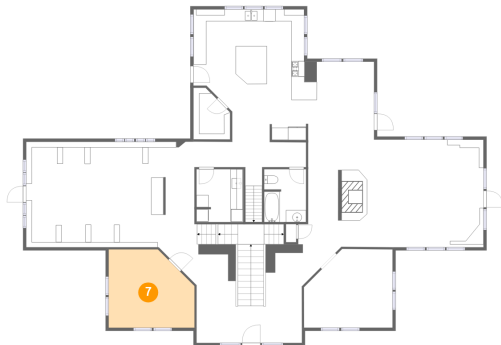
6 Floor 2 - Living Room



Max Dimensions: 28'10" x 17'11"
Calculated Area: 510 sq. ft
Included: Yes

Heated: Yes
Finished: Yes
Enclosed: Yes
Contiguous: Yes
Permitted: Yes
Wet space: No
Addition: No
Conversion: No

7 Floor 2 - Bedroom



Max Dimensions: 14'1" x 12'10"
Calculated Area: 163 sq. ft
Included: Yes

Heated: Yes
Finished: Yes
Enclosed: Yes
Contiguous: Yes
Permitted: Yes
Wet space: No
Addition: No
Conversion: No

8 Floor 2 - Office



Max Dimensions: 14'7" x 12'11"
Calculated Area: 168 sq. ft
Included: Yes

Heated: Yes
Finished: Yes
Enclosed: Yes
Contiguous: Yes
Permitted: Yes
Wet space: No
Addition: No
Conversion: No

76346 Bryson Hesperia Road, Bradley, Monterey County, California, United States, 93426

9 Floor 2 - Pantry



Max Dimensions: 5'5" x 8'6"
Calculated Area: 38 sq. ft
Included: Yes

Heated: Yes
Finished: Yes
Enclosed: Yes
Contiguous: Yes
Permitted: Yes
Wet space: No
Addition: No
Conversion: No

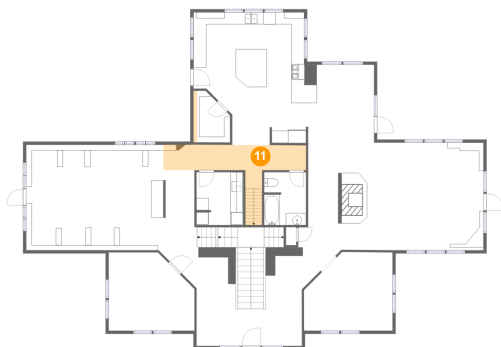
10 Floor 2 - Kitchen



Max Dimensions: 18'10" x 21'10"
Calculated Area: 351 sq. ft
Included: Yes

Heated: Yes
Finished: Yes
Enclosed: Yes
Contiguous: Yes
Permitted: Yes
Wet space: No
Addition: No
Conversion: No

11 Floor 2 - Hall



Max Dimensions: 23'5" x 13'1"
Calculated Area: 128 sq. ft
Included: Yes

Heated: Yes
Finished: Yes
Enclosed: Yes
Contiguous: Yes
Permitted: Yes
Wet space: No
Addition: No
Conversion: No

76346 Bryson Hesperia Road, Bradley, Monterey County,
California, United States, 93426

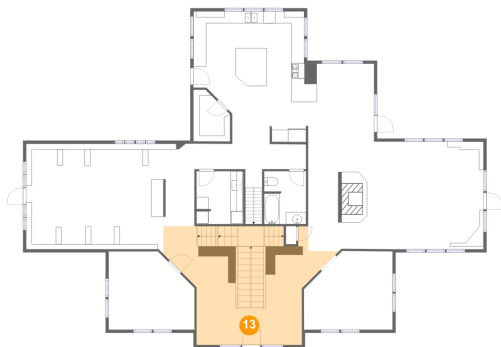
12 Floor 2 - Dining Area



Max Dimensions: 10'10" x 12'9"
Calculated Area: 139 sq. ft
Included: Yes

Heated: Yes
Finished: Yes
Enclosed: Yes
Contiguous: Yes
Permitted: Yes
Wet space: No
Addition: No
Conversion: No

13 Floor 2 - Foyer



Max Dimensions: 28'0" x 14'6"
Calculated Area: 393 sq. ft
Included: Yes

Heated: Yes
Finished: Yes
Enclosed: Yes
Contiguous: Yes
Permitted: Yes
Wet space: No
Addition: No
Conversion: No

14 Floor 2 - Hall



Max Dimensions: 5'1" x 9'4"
Calculated Area: 48 sq. ft
Included: Yes

Heated: Yes
Finished: Yes
Enclosed: Yes
Contiguous: Yes
Permitted: Yes
Wet space: No
Addition: No
Conversion: No

76346 Bryson Hesperia Road, Bradley, Monterey County,
California, United States, 93426

15 Floor 3 - Hall



Max Dimensions: 33'5" x 13'10"
Calculated Area: 369 sq. ft
Included: Yes

Heated: Yes
Finished: Yes
Enclosed: Yes
Contiguous: Yes
Permitted: Yes
Wet space: No
Addition: No
Conversion: No

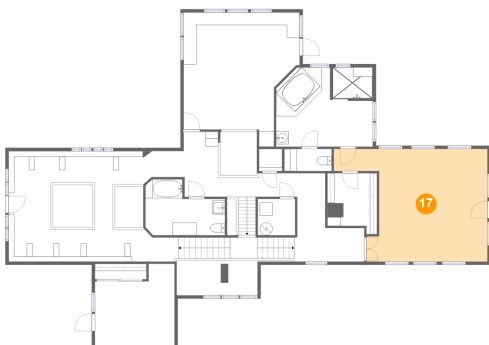
16 Floor 3 - WC



Max Dimensions: 7'5" x 3'6"
Calculated Area: 26 sq. ft
Included: Yes

Heated: Yes
Finished: Yes
Enclosed: Yes
Contiguous: Yes
Permitted: Yes
Wet space: Yes
Addition: No
Conversion: No

17 Floor 3 - Primary Bedroom



Max Dimensions: 24'1" x 17'8"
Calculated Area: 333 sq. ft
Included: Yes

Heated: Yes
Finished: Yes
Enclosed: Yes
Contiguous: Yes
Permitted: Yes
Wet space: No
Addition: No
Conversion: No

76346 Bryson Hesperia Road, Bradley, Monterey County, California, United States, 93426

18 Floor 3 - Open To Below



Max Dimensions: 4'6" x 6'6"
Calculated Area: 29 sq. ft
Included: No

Heated: No
Finished: No
Enclosed: No
Contiguous: Yes
Permitted: No
Wet space: No
Addition: No
Conversion: No

19 Floor 3 - Utility



Max Dimensions: 5'10" x 5'8"
Calculated Area: 33 sq. ft
Included: No

Heated: Yes
Finished: No
Enclosed: Yes
Contiguous: Yes
Permitted: Yes
Wet space: No
Addition: No
Conversion: No

20 Floor 3 - Primary Bath



Max Dimensions: 15'2" x 12'5"
Calculated Area: 181 sq. ft
Included: Yes

Heated: Yes
Finished: Yes
Enclosed: Yes
Contiguous: Yes
Permitted: Yes
Wet space: Yes
Addition: No
Conversion: No

76346 Bryson Hesperia Road, Bradley, Monterey County, California, United States, 93426

21 Floor 3 - Bedroom



Max Dimensions: 12'6" x 12'10"
Calculated Area: 137 sq. ft
Included: Yes

Heated: Yes
Finished: Yes
Enclosed: Yes
Contiguous: Yes
Permitted: Yes
Wet space: No
Addition: No
Conversion: No

22 Floor 3 - Room



Max Dimensions: 18'2" x 21'1"
Calculated Area: 306 sq. ft
Included: Yes

Heated: Yes
Finished: Yes
Enclosed: Yes
Contiguous: Yes
Permitted: Yes
Wet space: No
Addition: No
Conversion: No

23 Floor 3 - W.I.C.



Max Dimensions: 7'10" x 9'7"
Calculated Area: 67 sq. ft
Included: Yes

Heated: Yes
Finished: Yes
Enclosed: Yes
Contiguous: Yes
Permitted: Yes
Wet space: No
Addition: No
Conversion: No

76346 Bryson Hesperia Road, Bradley, Monterey County, California, United States, 93426

24 Floor 3 - Library



Max Dimensions: 22'5" x 17'4"
Calculated Area: 378 sq. ft
Included: Yes

Heated: Yes
Finished: Yes
Enclosed: Yes
Contiguous: Yes
Permitted: Yes
Wet space: No
Addition: No
Conversion: No

25 Floor 3 - Open To Below



Max Dimensions: 5'9" x 6'11"
Calculated Area: 39 sq. ft
Included: No

Heated: No
Finished: No
Enclosed: No
Contiguous: Yes
Permitted: No
Wet space: No
Addition: No
Conversion: No

26 Floor 3 - Open To Below



Max Dimensions: 6'3" x 6'8"
Calculated Area: 42 sq. ft
Included: No

Heated: No
Finished: No
Enclosed: No
Contiguous: Yes
Permitted: No
Wet space: No
Addition: No
Conversion: No

76346 Bryson Hesperia Road, Bradley, Monterey County,
California, United States, 93426

27 Floor 3 - Open To Below



Max Dimensions: 12'8" x 5'5"
Calculated Area: 69 sq. ft
Included: No

Heated: No
Finished: No
Enclosed: No
Contiguous: Yes
Permitted: No
Wet space: No
Addition: No
Conversion: No

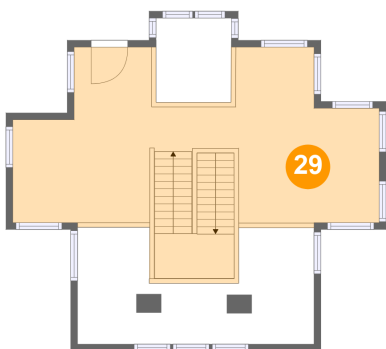
28 Floor 3 - Bath



Max Dimensions: 12'6" x 8'9"
Calculated Area: 88 sq. ft
Included: Yes

Heated: Yes
Finished: Yes
Enclosed: Yes
Contiguous: Yes
Permitted: Yes
Wet space: Yes
Addition: No
Conversion: No

29 Floor 4 - Room

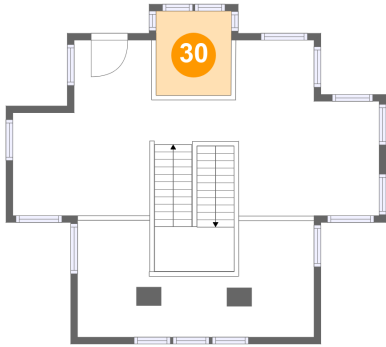


Max Dimensions: 26'11" x 12'11"
Calculated Area: 312 sq. ft
Included: Yes

Heated: Yes
Finished: Yes
Enclosed: Yes
Contiguous: Yes
Permitted: Yes
Wet space: No
Addition: No
Conversion: No

76346 Bryson Hesperia Road, Bradley, Monterey County,
California, United States, 93426

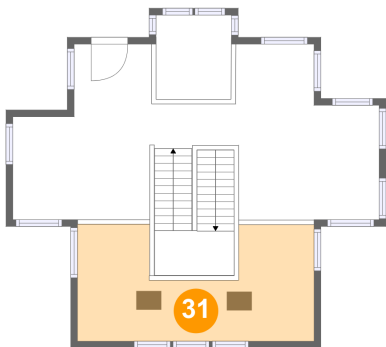
30 Floor 4 - Open To Below



Max Dimensions: 5'7" x 6'2"
Calculated Area: 34 sq. ft
Included: No

Heated: No
Finished: No
Enclosed: No
Contiguous: Yes
Permitted: No
Wet space: No
Addition: No
Conversion: No

31 Floor 4 - Open To Below



Max Dimensions: 17'5" x
8'7"
Calculated Area: 122 sq. ft
Included: No

Heated: No
Finished: No
Enclosed: No
Contiguous:
Yes
Permitted: No
Wet space: No
Addition: No
Conversion: No