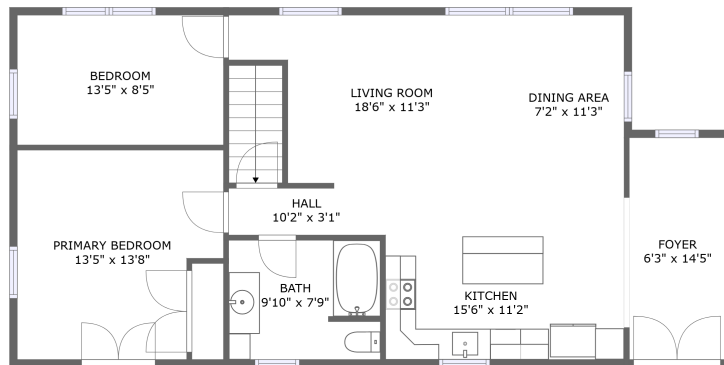
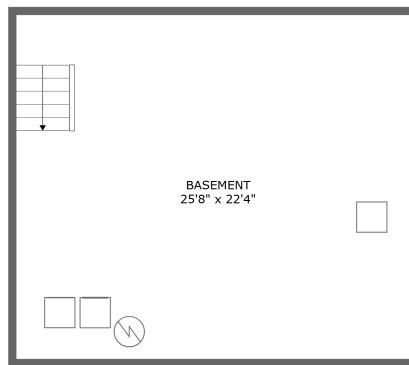


16 Hilltop Drive, Milford, Hillsborough County, New Hampshire, United States, 03055




FLOOR 2



FLOOR 1

Property summary

 **0** Garages

 **2** Bedrooms

 **1** Bathrooms

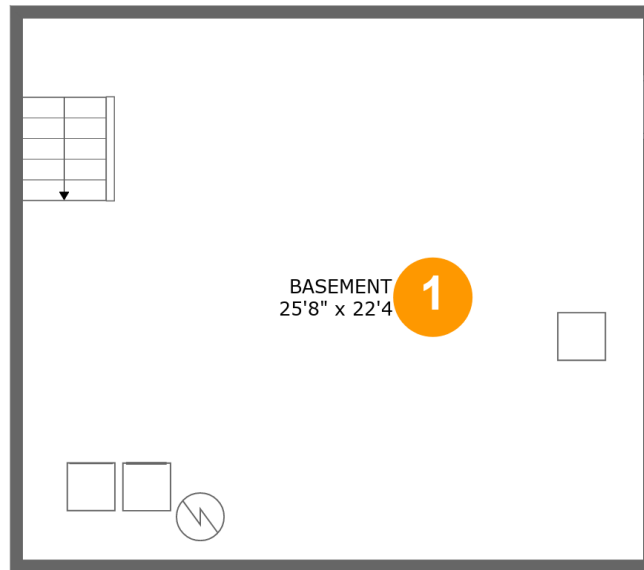
 **0** Half baths

 **2** Floors

 **1,049** Gross living area sqft

 **1,673** Total sqft

16 Hilltop Drive, Milford, Hillsborough County, New Hampshire, United States, 03055



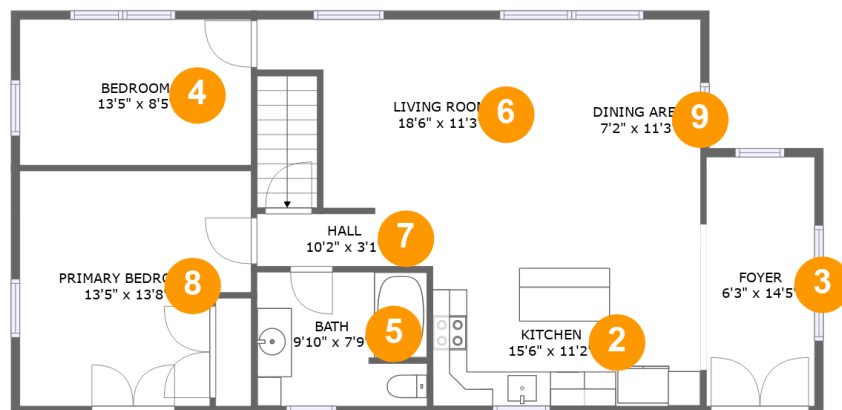
Room dimensions

Floor 1

Total sqft: 624 Living area: 0

#		Dimensions	sqft	Counted as living area
1	Basement	25'8" x 22'4"	575 sq. ft	No

16 Hilltop Drive, Milford, Hillsborough County, New Hampshire, United States, 03055



Room dimensions

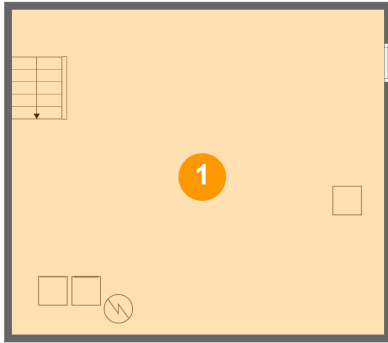
Floor 2

Total sqft: 1049 Living area: 1049

#		Dimensions	sqft	Counted as living area
2	Kitchen	15'6" x 11'2"	173 sq. ft	Yes
3	Foyer	6'3" x 14'5"	90 sq. ft	Yes
4	Bedroom	13'5" x 8'5"	113 sq. ft	Yes
5	Bath	9'10" x 7'9"	75 sq. ft	Yes
6	Living Room	18'6" x 11'3"	175 sq. ft	Yes
7	Hall	10'2" x 3'1"	31 sq. ft	Yes
8	Primary Bedroom	13'5" x 13'8"	167 sq. ft	Yes
9	Dining Area	7'2" x 11'3"	81 sq. ft	Yes

16 Hilltop Drive, Milford, Hillsborough County, New Hampshire, United States, 03055

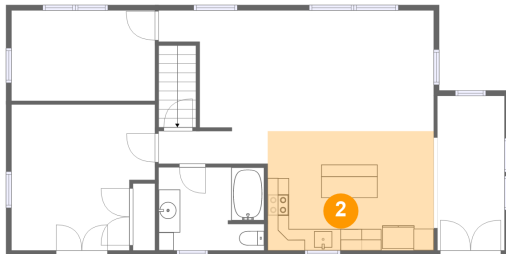
1 Floor 1 - Basement



Dimensions: 25'8" x 22'4"
Area: 575 sq. ft
Counted as living area: No

Heated: Yes
Finished: No
Enclosed: Yes
Contiguous: Yes
Permitted: Yes
Wet space: No
Addition: No
Conversion: No

2 Floor 2 - Kitchen

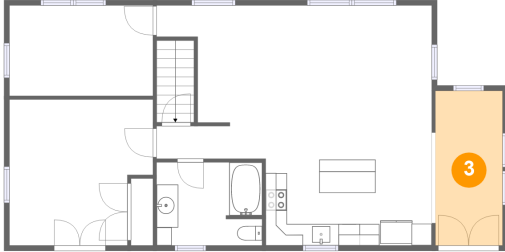


Dimensions: 15'6" x 11'2"
Area: 173 sq. ft
Counted as living area: Yes

Heated: Yes
Finished: Yes
Enclosed: Yes
Contiguous: Yes
Permitted: Yes
Wet space: No
Addition: No
Conversion: No

16 Hilltop Drive, Milford, Hillsborough County, New Hampshire, United States, 03055

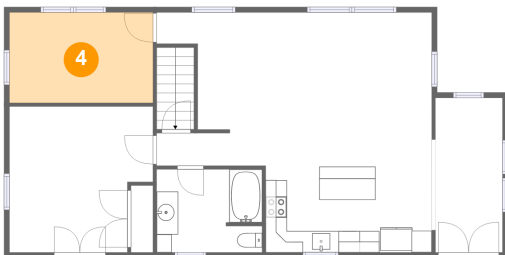
3 Floor 2 - Foyer



Dimensions: 6'3" x 14'5"
Area: 90 sq. ft
Counted as living area: Yes

Heated: Yes
Finished: Yes
Enclosed: Yes
Contiguous: Yes
Permitted: Yes
Wet space: No
Addition: No
Conversion: No

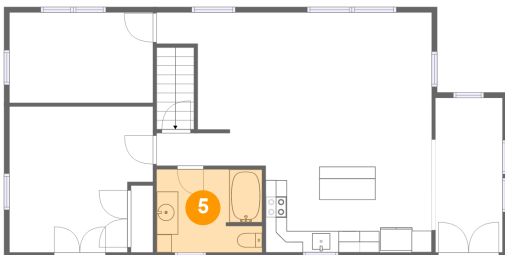
4 Floor 2 - Bedroom



Dimensions: 13'5" x 8'5"
Area: 113 sq. ft
Counted as living area: Yes

Heated: Yes
Finished: Yes
Enclosed: Yes
Contiguous: Yes
Permitted: Yes
Wet space: No
Addition: No
Conversion: No

5 Floor 2 - Bath

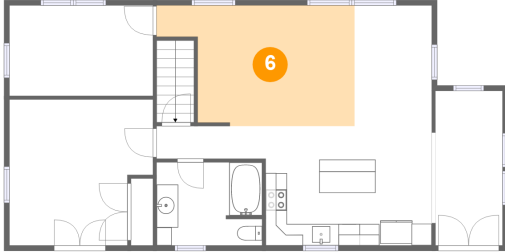


Dimensions: 9'10" x 7'9"
Area: 75 sq. ft
Counted as living area: Yes

Heated: Yes
Finished: Yes
Enclosed: Yes
Contiguous: Yes
Permitted: Yes
Wet space: Yes
Addition: No
Conversion: No

16 Hilltop Drive, Milford, Hillsborough County, New Hampshire, United States, 03055

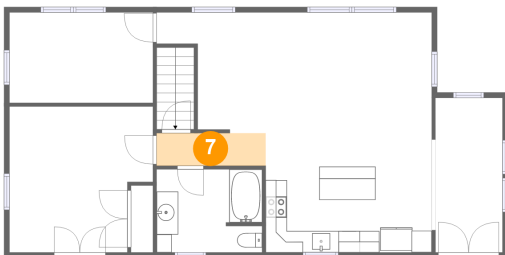
6 Floor 2 - Living Room



Dimensions: 18'6" x 11'3"
Area: 175 sq. ft
Counted as living area: Yes

Heated: Yes
Finished: Yes
Enclosed: Yes
Contiguous: Yes
Permitted: Yes
Wet space: No
Addition: No
Conversion: No

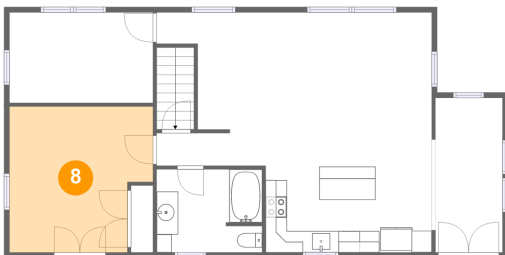
7 Floor 2 - Hall



Dimensions: 10'2" x 3'1"
Area: 31 sq. ft
Counted as living area: Yes

Heated: Yes
Finished: Yes
Enclosed: Yes
Contiguous: Yes
Permitted: Yes
Wet space: No
Addition: No
Conversion: No

8 Floor 2 - Primary Bedroom

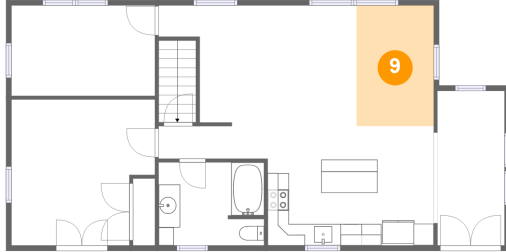


Dimensions: 13'5" x 13'8"
Area: 167 sq. ft
Counted as living area: Yes

Heated: Yes
Finished: Yes
Enclosed: Yes
Contiguous: Yes
Permitted: Yes
Wet space: No
Addition: No
Conversion: No

16 Hilltop Drive, Milford, Hillsborough County, New Hampshire, United States, 03055

9 Floor 2 - Dining Area



Dimensions: 7'2" x 11'3"
Area: 81 sq. ft
Counted as living area: Yes

Heated: Yes
Finished: Yes
Enclosed: Yes
Contiguous: Yes
Permitted: Yes
Wet space: No
Addition: No
Conversion: No