

Home report

146 Pineview Drive, Hardy, Franklin County, Virginia, United States, 24101



Total Area: 2264 sq. ft

Floor 1: 1132 sq. ft, Floor 2: 1132 sq. ft

Excluded: Fireplace 18 sq. ft, Carport 341 sq. ft, Deck 258 sq. ft, Porch 25 sq. ft, Walls: 136 sq. ft

Property summary

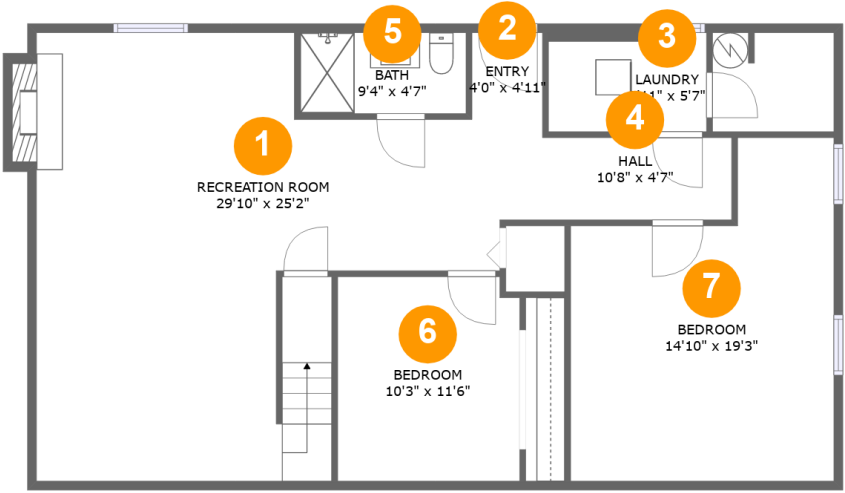
 **2** Floors

 **5** Bedrooms

 **3** Bathrooms

Home report

146 Pineview Drive, Hardy, Franklin County, Virginia, United States, 24101

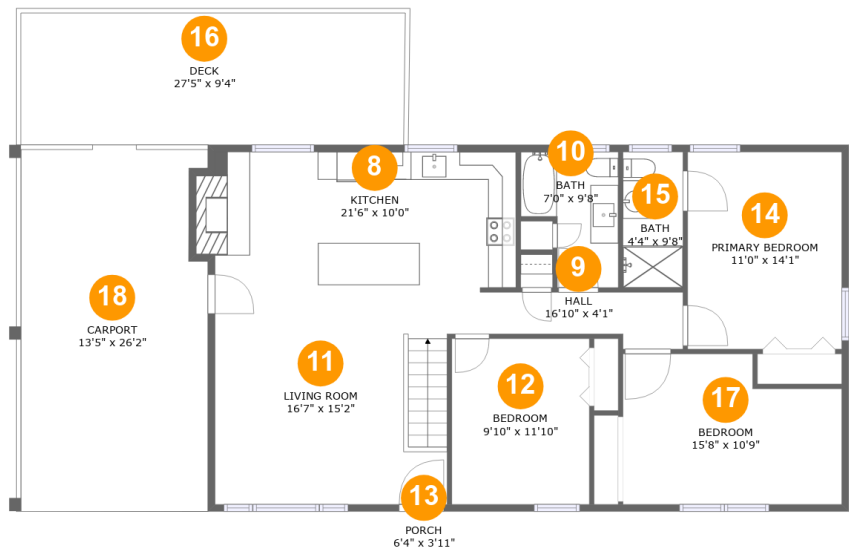


Room dimensions

Floor 1 Total:1132sqft Excluded: 9sqft

#		Max Dimensions	sqft	Included
1	Recreation Room	29'10" x 25'2"	505 sq. ft	Yes
2	Entry	4'0" x 4'11"	19 sq. ft	Yes
3	Laundry	8'11" x 5'7"	49 sq. ft	Yes
4	Hall	10'8" x 4'7"	49 sq. ft	Yes
5	Bath	9'4" x 4'7"	42 sq. ft	Yes
6	Bedroom	10'3" x 11'6"	116 sq. ft	Yes
7	Bedroom	14'10" x 19'3"	239 sq. ft	Yes

146 Pineview Drive, Hardy, Franklin County, Virginia, United States, 24101



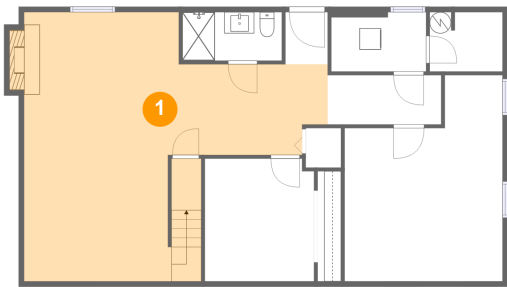
Room dimensions

Floor 2 Total:1132sqft Excluded: 633sqft

#		Max Dimensions	sqft	Included
8	Kitchen	21'6" x 10'0"	223 sq. ft	Yes
9	Hall	16'10" x 4'1"	55 sq. ft	Yes
10	Bath	7'0" x 9'8"	54 sq. ft	Yes
11	Living Room	16'7" x 15'2"	252 sq. ft	Yes
12	Bedroom	9'10" x 11'10"	117 sq. ft	Yes
13	Porch	6'4" x 3'11"	25 sq. ft	No
14	Primary Bedroom	11'0" x 14'1"	155 sq. ft	Yes
15	Bath	4'4" x 9'8"	42 sq. ft	Yes
16	Deck	27'5" x 9'4"	258 sq. ft	No
17	Bedroom	15'8" x 10'9"	153 sq. ft	Yes
18	Carport	13'5" x 26'2"	341 sq. ft	No

146 Pineview Drive, Hardy, Franklin County, Virginia, United States, 24101

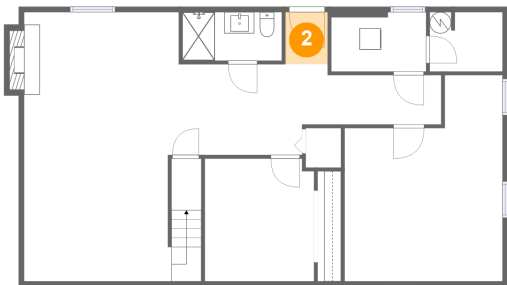
1 Floor 1 - Recreation Room



Max Dimensions: 29'10" x 25'2"
Calculated Area: 505 sq. ft
Included: Yes

Heated: Yes
Finished: Yes
Enclosed: Yes
Contiguous: Yes
Permitted: Yes
Wet space: No
Addition: No
Conversion: No

2 Floor 1 - Entry

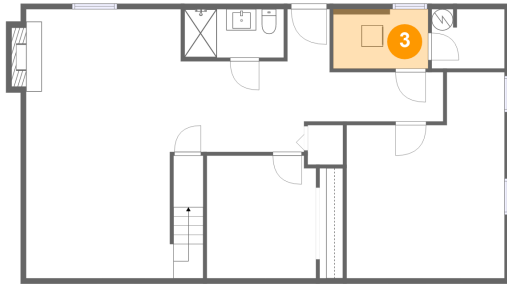


Max Dimensions: 4'0" x 4'11"
Calculated Area: 19 sq. ft
Included: Yes

Heated: Yes
Finished: Yes
Enclosed: Yes
Contiguous: Yes
Permitted: Yes
Wet space: No
Addition: No
Conversion: No

146 Pineview Drive, Hardy, Franklin County, Virginia, United States, 24101

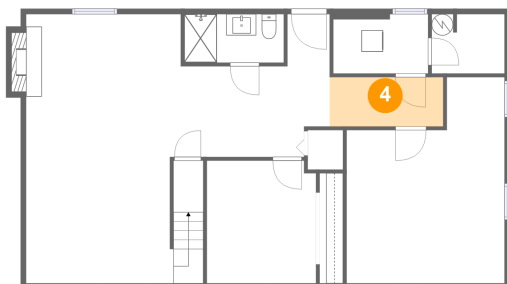
3 Floor 1 - Laundry



Max Dimensions: 8'11" x 5'7"
Calculated Area: 49 sq. ft
Included: Yes

Heated: Yes
Finished: Yes
Enclosed: Yes
Contiguous: Yes
Permitted: Yes
Wet space: No
Addition: No
Conversion: No

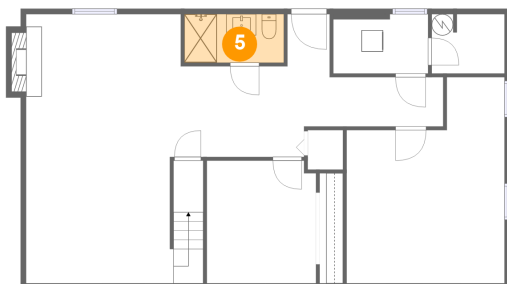
4 Floor 1 - Hall



Max Dimensions: 10'8" x 4'7"
Calculated Area: 49 sq. ft
Included: Yes

Heated: Yes
Finished: Yes
Enclosed: Yes
Contiguous: Yes
Permitted: Yes
Wet space: No
Addition: No
Conversion: No

5 Floor 1 - Bath

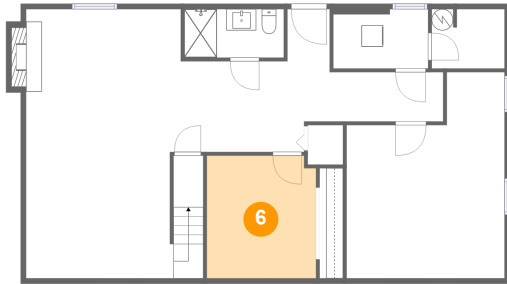


Max Dimensions: 9'4" x 4'7"
Calculated Area: 42 sq. ft
Included: Yes

Heated: Yes
Finished: Yes
Enclosed: Yes
Contiguous: Yes
Permitted: Yes
Wet space: Yes
Addition: No
Conversion: No

146 Pineview Drive, Hardy, Franklin County, Virginia, United States, 24101

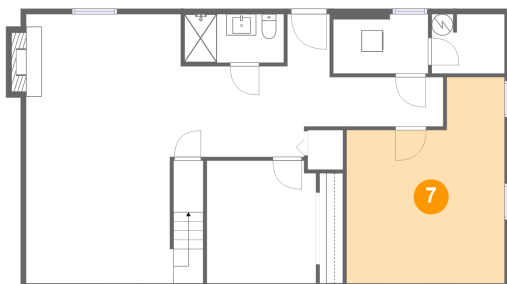
6 Floor 1 - Bedroom



Max Dimensions: 10'3" x 11'6"
Calculated Area: 116 sq. ft
Included: Yes

Heated: Yes
Finished: Yes
Enclosed: Yes
Contiguous: Yes
Permitted: Yes
Wet space: No
Addition: No
Conversion: No

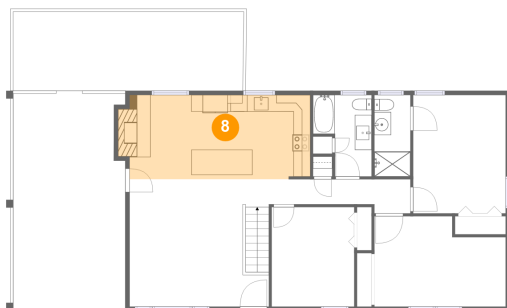
7 Floor 1 - Bedroom



Max Dimensions: 14'10" x 19'3"
Calculated Area: 239 sq. ft
Included: Yes

Heated: Yes
Finished: Yes
Enclosed: Yes
Contiguous: Yes
Permitted: Yes
Wet space: No
Addition: No
Conversion: No

8 Floor 2 - Kitchen

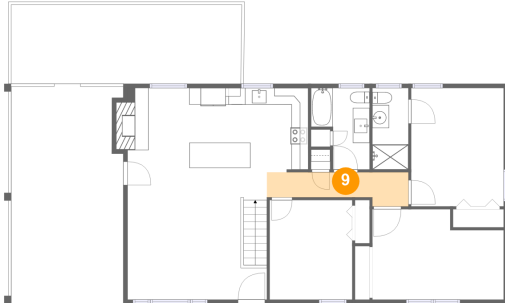


Max Dimensions: 21'6" x 10'0"
Calculated Area: 223 sq. ft
Included: Yes

Heated: Yes
Finished: Yes
Enclosed: Yes
Contiguous: Yes
Permitted: Yes
Wet space: No
Addition: No
Conversion: No

146 Pineview Drive, Hardy, Franklin County, Virginia, United States, 24101

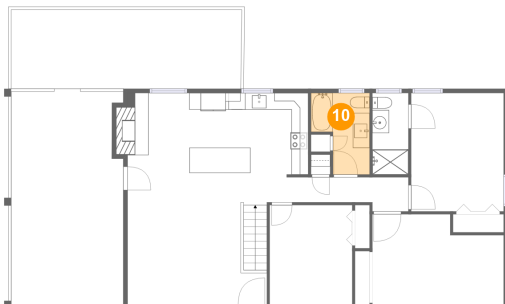
9 Floor 2 - Hall



Max Dimensions: 16'10" x 4'1"
Calculated Area: 55 sq. ft
Included: Yes

Heated: Yes
Finished: Yes
Enclosed: Yes
Contiguous: Yes
Permitted: Yes
Wet space: No
Addition: No
Conversion: No

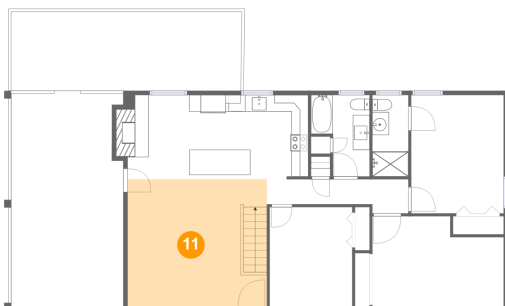
10 Floor 2 - Bath



Max Dimensions: 7'0" x 9'8"
Calculated Area: 54 sq. ft
Included: Yes

Heated: Yes
Finished: Yes
Enclosed: Yes
Contiguous: Yes
Permitted: Yes
Wet space: Yes
Addition: No
Conversion: No

11 Floor 2 - Living Room

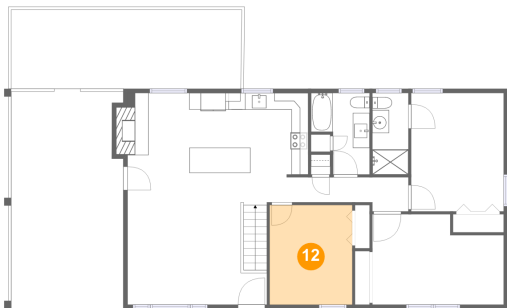


Max Dimensions: 16'7" x 15'2"
Calculated Area: 252 sq. ft
Included: Yes

Heated: Yes
Finished: Yes
Enclosed: Yes
Contiguous: Yes
Permitted: Yes
Wet space: No
Addition: No
Conversion: No

146 Pineview Drive, Hardy, Franklin County, Virginia, United States, 24101

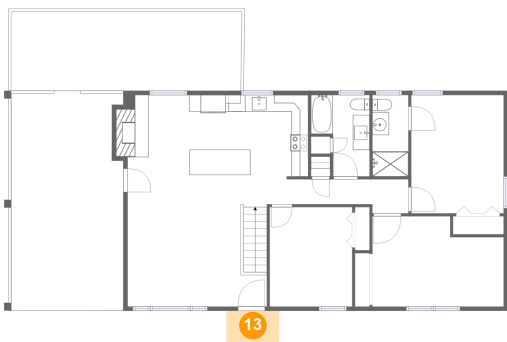
12 Floor 2 - Bedroom



Max Dimensions: 9'10" x 11'10"
Calculated Area: 117 sq. ft
Included: Yes

Heated: Yes
Finished: Yes
Enclosed: Yes
Contiguous: Yes
Permitted: Yes
Wet space: No
Addition: No
Conversion: No

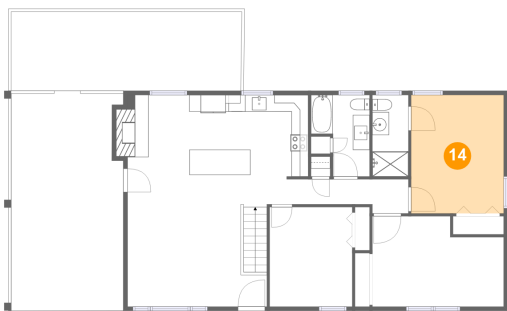
13 Floor 2 - Porch



Max Dimensions: 6'4" x 3'11"
Calculated Area: 25 sq. ft
Included: No

Heated: No
Finished: Yes
Enclosed: No
Contiguous: Yes
Permitted: Yes
Wet space: No
Addition: No
Conversion: No

14 Floor 2 - Primary Bedroom

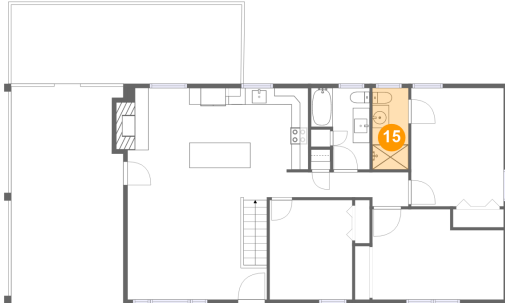


Max Dimensions: 11'0" x 14'1"
Calculated Area: 155 sq. ft
Included: Yes

Heated: Yes
Finished: Yes
Enclosed: Yes
Contiguous: Yes
Permitted: Yes
Wet space: No
Addition: No
Conversion: No

146 Pineview Drive, Hardy, Franklin County, Virginia, United States, 24101

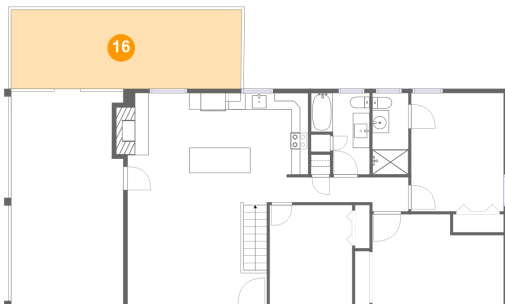
15 Floor 2 - Bath



Max Dimensions: 4'4" x 9'8"
Calculated Area: 42 sq. ft
Included: Yes

Heated: Yes
Finished: Yes
Enclosed: Yes
Contiguous: Yes
Permitted: Yes
Wet space: Yes
Addition: No
Conversion: No

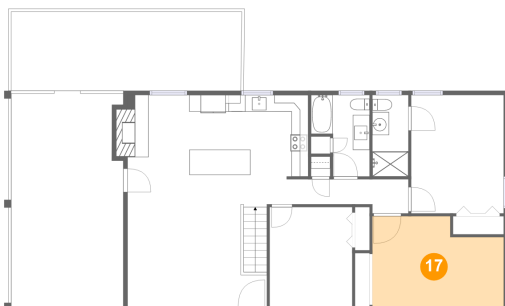
16 Floor 2 - Deck



Max Dimensions: 27'5" x 9'4"
Calculated Area: 258 sq. ft
Included: No

Heated: No
Finished: Yes
Enclosed: No
Contiguous: Yes
Permitted: Yes
Wet space: No
Addition: No
Conversion: No

17 Floor 2 - Bedroom

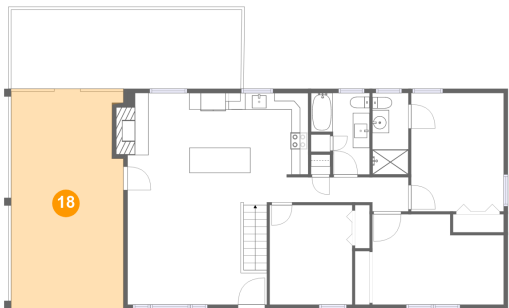


Max Dimensions: 15'8" x 10'9"
Calculated Area: 153 sq. ft
Included: Yes

Heated: Yes
Finished: Yes
Enclosed: Yes
Contiguous: Yes
Permitted: Yes
Wet space: No
Addition: No
Conversion: No

146 Pineview Drive, Hardy, Franklin County, Virginia, United States, 24101

18 Floor 2 - Carport



Max Dimensions: 13'5" x 26'2"
Calculated Area: 341 sq. ft
Included: No

Heated: No
Finished: Yes
Enclosed: No
Contiguous: Yes
Permitted: Yes
Wet space: No
Addition: No
Conversion: No