

2216 Weona Drive, Nashville, Davidson County, Tennessee, United States, 37214



Property Summary

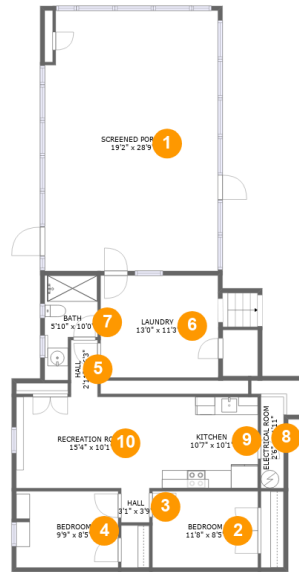
0 garages **4** bedrooms **3** bathrooms **0** half baths

2 floors

1,607 Gross Living Area sqft

2,727 total sqft

2216 Weona Drive, Nashville, Davidson County, Tennessee, United States, 37214



Room Dimensions

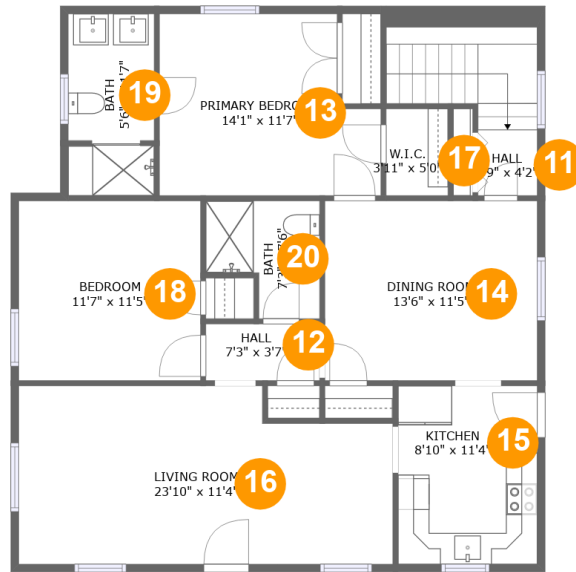
Floor 1

Total sqft: 1540

Living area: 542

#	Room name	Dimensions	Area (sqft)	Counted as Living Area
1	Screened Porch	19'2" x 28'9"	544 sq. ft	No
2	Bedroom	11'8" x 8'5"	98 sq. ft	No
3	Hall	3'1" x 3'9"	12 sq. ft	No
4	Bedroom	9'9" x 8'5"	95 sq. ft	No
5	Hall	2'11" x 6'3"	18 sq. ft	No
6	Laundry	13'0" x 11'3"	147 sq. ft	Yes
7	Bath	5'10" x 10'0"	52 sq. ft	No
8	Electrical Room	2'6" x 11'11"	39 sq. ft	No
9	Kitchen	10'7" x 10'1"	107 sq. ft	Yes
10	Recreation Room	15'4" x 10'1"	163 sq. ft	Yes

2216 Weona Drive, Nashville, Davidson County, Tennessee, United States, 37214



Room Dimensions

Floor 2

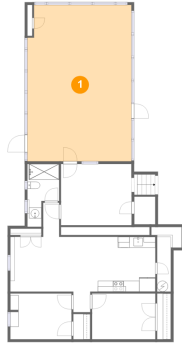
Total sqft: 1187

Living area: 1065

#	Room name	Dimensions	Area (sqft)	Counted as Living Area
11	Hall	3'9" x 4'2"	69 sq. ft	No
12	Hall	7'3" x 3'7"	26 sq. ft	Yes
13	Primary Bedroom	14'1" x 11'7"	146 sq. ft	Yes
14	Dining Room	13'6" x 11'5"	155 sq. ft	Yes
15	Kitchen	8'10" x 11'4"	101 sq. ft	Yes
16	Living Room	23'10" x 11'4"	250 sq. ft	Yes
17	W.i.c.	3'11" x 5'0"	22 sq. ft	No
18	Bedroom	11'7" x 11'5"	132 sq. ft	Yes
19	Bath	5'6" x 11'7"	62 sq. ft	Yes
20	Bath	7'3" x 7'6"	44 sq. ft	Yes

2216 Weona Drive, Nashville, Davidson County, Tennessee, United States, 37214

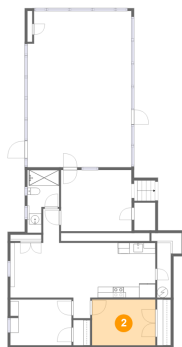
1 Floor 1 - Screened Porch



Dimensions: 19'2" x 28'9"
Area: 544 sq. ft
Counted as Living Area: No

Heated: No
Finished: Yes
Enclosed: No
Contiguous: Yes
Permitted: Yes
Wet Space: No
Addition: No
Conversion: No

2 Floor 1 - Bedroom

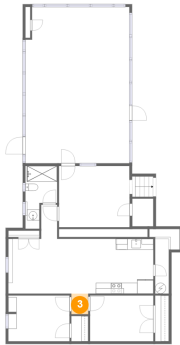


Dimensions: 11'8" x 8'5"
Area: 98 sq. ft
Counted as Living Area: No

Heated: Yes
Finished: Yes
Enclosed: Yes
Contiguous: Yes
Permitted: Yes
Wet Space: No
Addition: No
Conversion: No

2216 Weona Drive, Nashville, Davidson County, Tennessee, United States, 37214

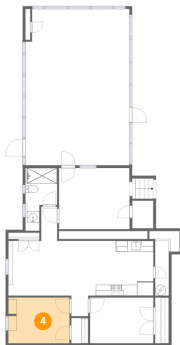
3 Floor 1 - Hall



Dimensions: 3'1" x 3'9"
Area: 12 sq. ft
Counted as Living Area: No

Heated: Yes
Finished: Yes
Enclosed: Yes
Contiguous: Yes
Permitted: Yes
Wet Space: No
Addition: No
Conversion: No

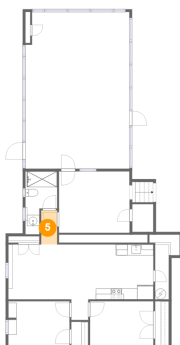
4 Floor 1 - Bedroom



Dimensions: 9'9" x 8'5"
Area: 95 sq. ft
Counted as Living Area: No

Heated: Yes
Finished: Yes
Enclosed: Yes
Contiguous: Yes
Permitted: Yes
Wet Space: No
Addition: No
Conversion: No

5 Floor 1 - Hall

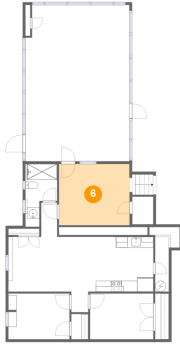


Dimensions: 2'11" x 6'3"
Area: 18 sq. ft
Counted as Living Area: No

Heated: Yes
Finished: Yes
Enclosed: Yes
Contiguous: Yes
Permitted: Yes
Wet Space: No
Addition: No
Conversion: No

2216 Weona Drive, Nashville, Davidson County, Tennessee, United States, 37214

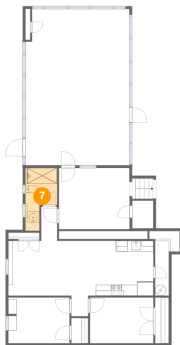
6 Floor 1 - Laundry



Dimensions: 13'0" x 11'3"
Area: 147 sq. ft
Counted as Living Area:
Yes

Heated: Yes
Finished: Yes
Enclosed: Yes
Contiguous:
Yes
Permitted: Yes
Wet Space: No
Addition: No
Conversion: No

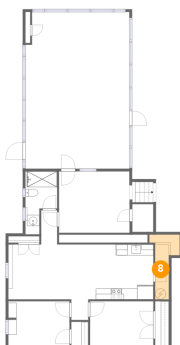
7 Floor 1 - Bath



Dimensions: 5'10" x 10'0"
Area: 52 sq. ft
Counted as Living Area: No

Heated: Yes
Finished: Yes
Enclosed: Yes
Contiguous: Yes
Permitted: Yes
Wet Space: Yes
Addition: No
Conversion: No

8 Floor 1 - Electrical Room

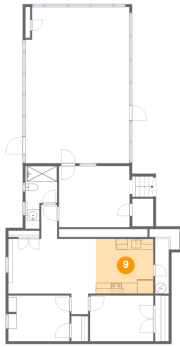


Dimensions: 2'6" x 11'11"
Area: 39 sq. ft
Counted as Living Area: No

Heated: No
Finished: No
Enclosed: Yes
Contiguous: Yes
Permitted: Yes
Wet Space: No
Addition: No
Conversion: No

2216 Weona Drive, Nashville, Davidson County, Tennessee, United States, 37214

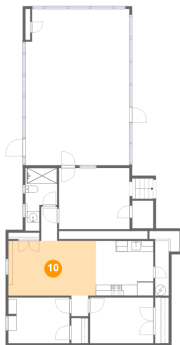
9 Floor 1 - Kitchen



Dimensions: 10'7" x 10'1"
Area: 107 sq. ft
Counted as Living Area:
Yes

Heated: Yes
Finished: Yes
Enclosed: Yes
Contiguous:
Yes
Permitted: Yes
Wet Space: No
Addition: No
Conversion: No

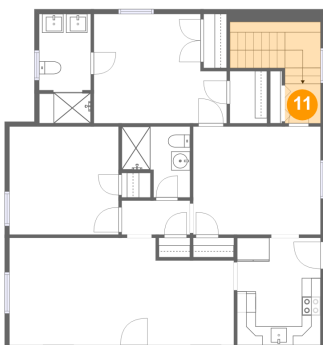
10 Floor 1 - Recreation Room



Dimensions: 15'4" x 10'1"
Area: 163 sq. ft
Counted as Living Area:
Yes

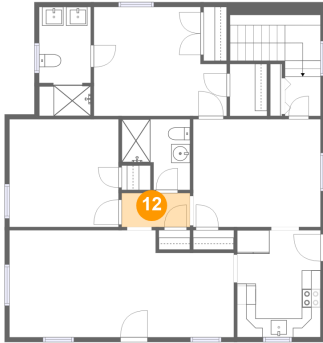
Heated: Yes
Finished: Yes
Enclosed: Yes
Contiguous:
Yes
Permitted: Yes
Wet Space: No
Addition: No
Conversion: No

11 Floor 2 - Hall



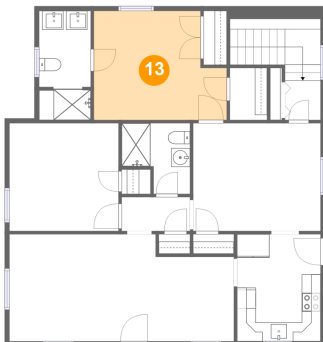
Dimensions: 3'9" x 4'2"
Area: 69 sq. ft
Counted as Living Area: No

Heated: Yes
Finished: Yes
Enclosed: Yes
Contiguous: Yes
Permitted: Yes
Wet Space: No
Addition: No
Conversion: No

**2216 Weona Drive, Nashville, Davidson County,
Tennessee, United States, 37214****12 Floor 2 - Hall**

Dimensions: 7'3" x 3'7"
Area: 26 sq. ft
Counted as Living Area:
Yes

Heated: Yes
Finished: Yes
Enclosed: Yes
Contiguous:
Yes
Permitted: Yes
Wet Space: No
Addition: No
Conversion: No

13 Floor 2 - Primary Bedroom

Dimensions: 14'1" x 11'7"
Area: 146 sq. ft
Counted as Living Area:
Yes

Heated: Yes
Finished: Yes
Enclosed: Yes
Contiguous:
Yes
Permitted: Yes
Wet Space: No
Addition: No
Conversion: No

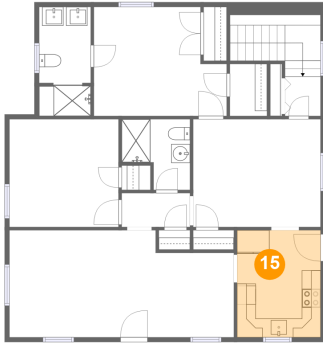
14 Floor 2 - Dining Room

Dimensions: 13'6" x 11'5"
Area: 155 sq. ft
Counted as Living Area:
Yes

Heated: Yes
Finished: Yes
Enclosed: Yes
Contiguous:
Yes
Permitted: Yes
Wet Space: No
Addition: No
Conversion: No

2216 Weona Drive, Nashville, Davidson County, Tennessee, United States, 37214

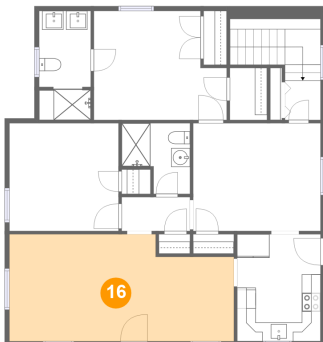
15 Floor 2 - Kitchen



Dimensions: 8'10" x 11'4"
Area: 101 sq. ft
Counted as Living Area:
Yes

Heated: Yes
Finished: Yes
Enclosed: Yes
Contiguous:
Yes
Permitted: Yes
Wet Space: No
Addition: No
Conversion: No

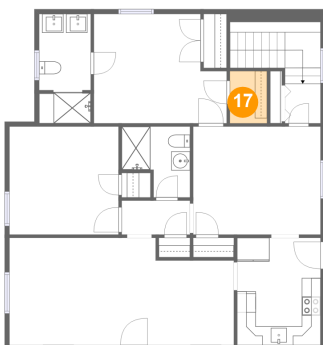
16 Floor 2 - Living Room



Dimensions: 23'10" x 11'4"
Area: 250 sq. ft
Counted as Living Area:
Yes

Heated: Yes
Finished: Yes
Enclosed: Yes
Contiguous:
Yes
Permitted: Yes
Wet Space: No
Addition: No
Conversion: No

17 Floor 2 - W.i.c.

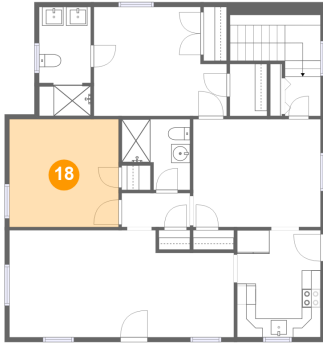


Dimensions: 3'11" x 5'0"
Area: 22 sq. ft
Counted as Living Area: No

Heated: Yes
Finished: Yes
Enclosed: Yes
Contiguous: Yes
Permitted: Yes
Wet Space: No
Addition: No
Conversion: No

2216 Weona Drive, Nashville, Davidson County, Tennessee, United States, 37214

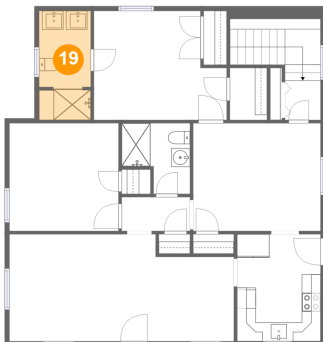
18 Floor 2 - Bedroom



Dimensions: 11'7" x 11'5"
Area: 132 sq. ft
Counted as Living Area:
Yes

Heated: Yes
Finished: Yes
Enclosed: Yes
Contiguous:
Yes
Permitted: Yes
Wet Space: No
Addition: No
Conversion: No

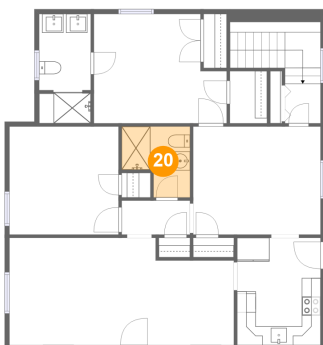
19 Floor 2 - Bath



Dimensions: 5'6" x 11'7"
Area: 62 sq. ft
Counted as Living Area:
Yes

Heated: Yes
Finished: Yes
Enclosed: Yes
Contiguous:
Yes
Permitted: Yes
Wet Space: Yes
Addition: No
Conversion: No

20 Floor 2 - Bath



Dimensions: 7'3" x 7'6"
Area: 44 sq. ft
Counted as Living Area:
Yes

Heated: Yes
Finished: Yes
Enclosed: Yes
Contiguous:
Yes
Permitted: Yes
Wet Space: Yes
Addition: No
Conversion: No