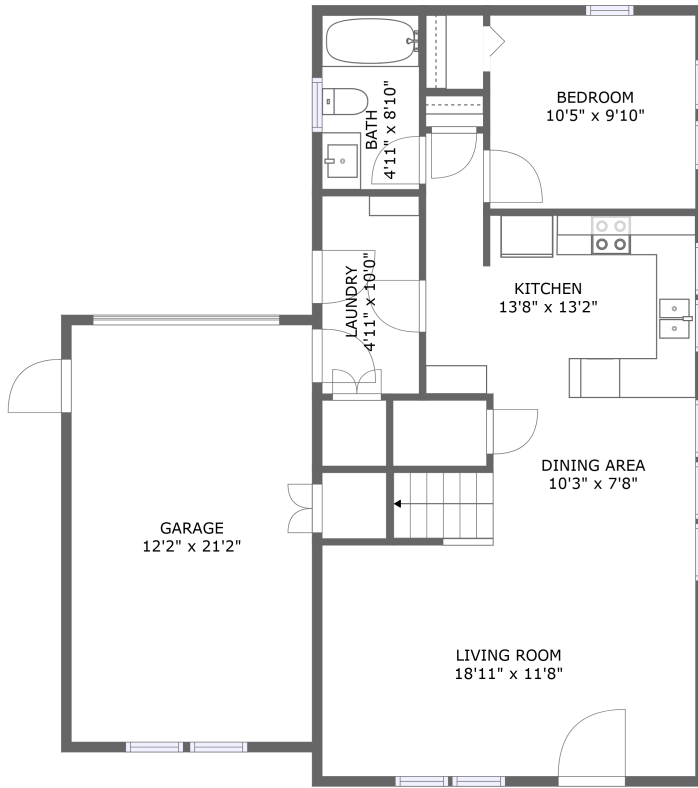
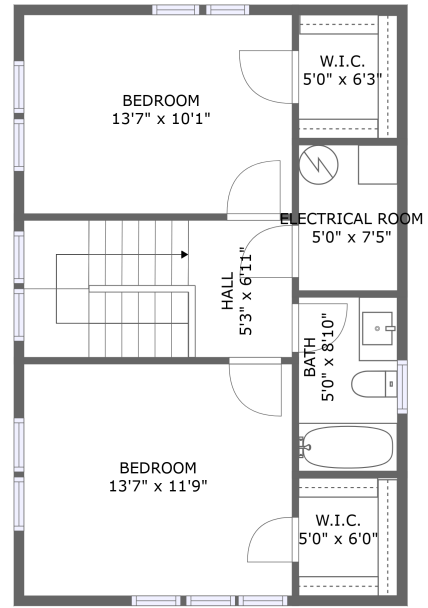


# 301-399 North 9th Avenue, Bonneville, Pocatello, Bannock County, Idaho, United States,



FLOOR 1



FLOOR 2

## Property Summary



2 floors



3 bedrooms



2 bathrooms



1,676 total sqft

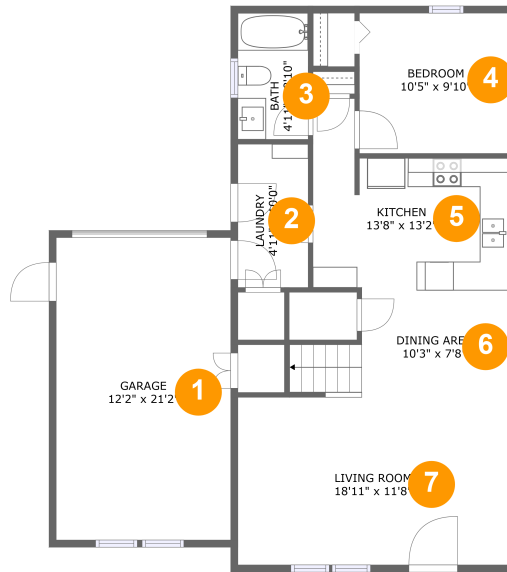


1 garages



1,305 Gross Living Area sqft

# 301-399 North 9th Avenue, Bonneville, Pocatello, Bannock County, Idaho, United States,



## Room Dimensions

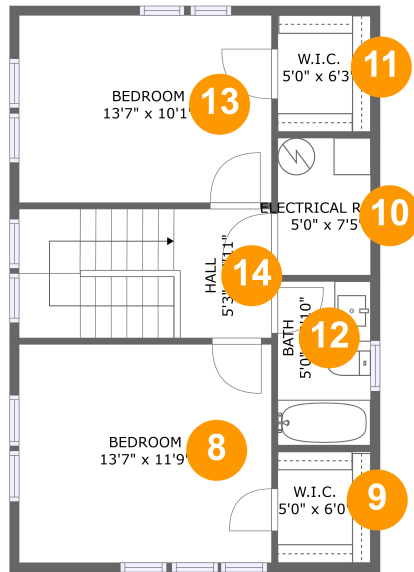
Floor 1

Total sqft: 1069

Living area: 775

#	Room name	Dimensions	Area (sqft)	Counted as Living Area
1	Garage	12'2" x 21'2"	258 sq. ft	No
2	Laundry	4'11" x 10'0"	49 sq. ft	Yes
3	Bath	4'11" x 8'10"	43 sq. ft	Yes
4	Bedroom	10'5" x 9'10"	102 sq. ft	Yes
5	Kitchen	13'8" x 13'2"	135 sq. ft	Yes
6	Dining Area	10'3" x 7'8"	96 sq. ft	Yes
7	Living Room	18'11" x 11'8"	221 sq. ft	Yes

**301-399 North 9th Avenue, Bonneville,  
Pocatello, Bannock County, Idaho, United States,**



**Room Dimensions**

**Floor 2**

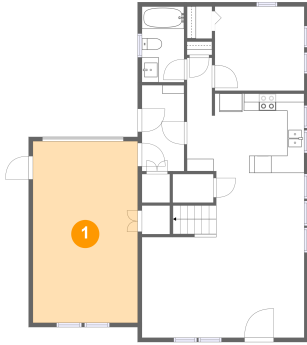
**Total sqft: 607**

**Living area: 530**

#	Room name	Dimensions	Area (sqft)	Counted as Living Area
8	Bedroom	13'7" x 11'9"	160 sq. ft	Yes
9	W.i.c.	5'0" x 6'0"	30 sq. ft	No
10	Electrical Room	5'0" x 7'5"	37 sq. ft	No
11	W.i.c.	5'0" x 6'3"	31 sq. ft	Yes
12	Bath	5'0" x 8'10"	44 sq. ft	Yes
13	Bedroom	13'7" x 10'1"	137 sq. ft	Yes
14	Hall	5'3" x 6'11"	94 sq. ft	Yes

# 301-399 North 9th Avenue, Bonneville, Pocatello, Bannock County, Idaho, United States,

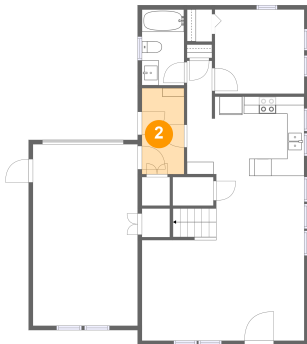
## 1 Floor 1 - Garage



Dimensions: 12'2" x 21'2"  
Area: 258 sq. ft  
Counted as Living Area: No

Heated: No  
Finished: No  
Enclosed: Yes  
Contiguous: Yes  
Permitted: Yes  
Wet Space: No  
Addition: No  
Conversion: No

## 2 Floor 1 - Laundry

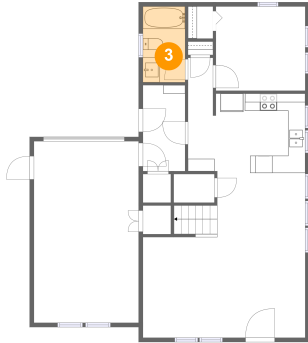


Dimensions: 4'11" x 10'0"  
Area: 49 sq. ft  
Counted as Living Area:  
Yes

Heated: Yes  
Finished: Yes  
Enclosed: Yes  
Contiguous:  
Yes  
Permitted: Yes  
Wet Space: No  
Addition: No  
Conversion: No

# 301-399 North 9th Avenue, Bonneville, Pocatello, Bannock County, Idaho, United States,

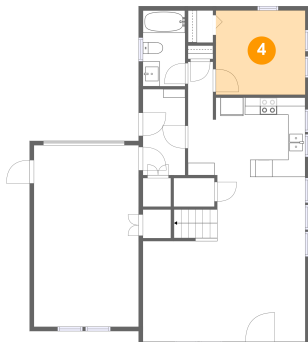
## 3 Floor 1 - Bath



Dimensions: 4'11" x 8'10"  
Area: 43 sq. ft  
Counted as Living Area:  
Yes

Heated: Yes  
Finished: Yes  
Enclosed: Yes  
Contiguous:  
Yes  
Permitted: Yes  
Wet Space: Yes  
Addition: No  
Conversion: No

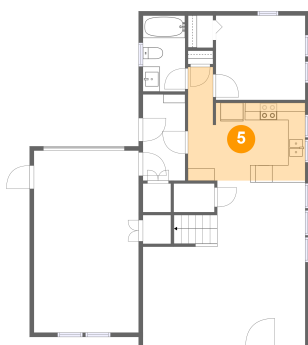
## 4 Floor 1 - Bedroom



Dimensions: 10'5" x 9'10"  
Area: 102 sq. ft  
Counted as Living Area:  
Yes

Heated: Yes  
Finished: Yes  
Enclosed: Yes  
Contiguous:  
Yes  
Permitted: Yes  
Wet Space: No  
Addition: No  
Conversion: No

## 5 Floor 1 - Kitchen

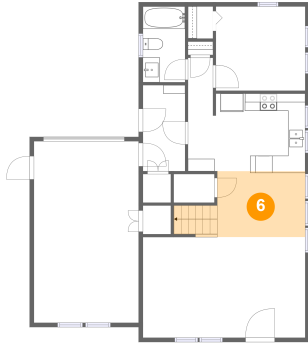


Dimensions: 13'8" x 13'2"  
Area: 135 sq. ft  
Counted as Living Area:  
Yes

Heated: Yes  
Finished: Yes  
Enclosed: Yes  
Contiguous:  
Yes  
Permitted: Yes  
Wet Space: No  
Addition: No  
Conversion: No

# 301-399 North 9th Avenue, Bonneville, Pocatello, Bannock County, Idaho, United States,

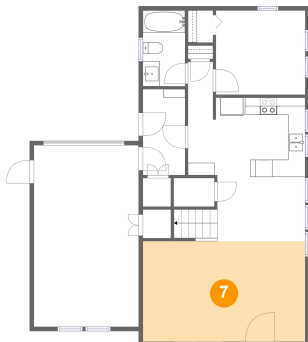
## 6 Floor 1 - Dining Area



Dimensions: 10'3" x 7'8"  
Area: 96 sq. ft  
Counted as Living Area:  
Yes

Heated: Yes  
Finished: Yes  
Enclosed: Yes  
Contiguous:  
Yes  
Permitted: Yes  
Wet Space: No  
Addition: No  
Conversion: No

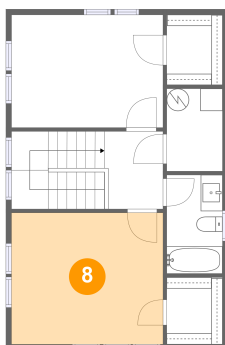
## 7 Floor 1 - Living Room



Dimensions: 18'11" x 11'8"  
Area: 221 sq. ft  
Counted as Living Area:  
Yes

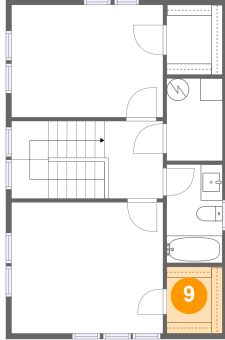
Heated: Yes  
Finished: Yes  
Enclosed: Yes  
Contiguous:  
Yes  
Permitted: Yes  
Wet Space: No  
Addition: No  
Conversion: No

## 8 Floor 2 - Bedroom



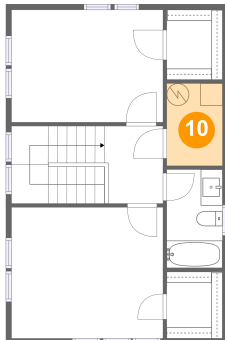
Dimensions: 13'7" x 11'9"  
Area: 160 sq. ft  
Counted as Living Area:  
Yes

Heated: Yes  
Finished: Yes  
Enclosed: Yes  
Contiguous:  
Yes  
Permitted: Yes  
Wet Space: No  
Addition: No  
Conversion: No

**301-399 North 9th Avenue, Bonneville,  
Pocatello, Bannock County, Idaho, United States,****9 Floor 2 - W.i.c.**

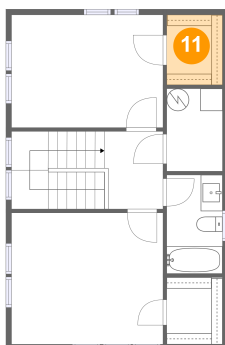
Dimensions: 5'0" x 6'0"  
Area: 30 sq. ft  
Counted as Living Area: No

Heated: Yes  
Finished: Yes  
Enclosed: Yes  
Contiguous: Yes  
Permitted: Yes  
Wet Space: No  
Addition: No  
Conversion: No

**10 Floor 2 - Electrical Room**

Dimensions: 5'0" x 7'5"  
Area: 37 sq. ft  
Counted as Living Area: No

Heated: No  
Finished: Yes  
Enclosed: Yes  
Contiguous: Yes  
Permitted: Yes  
Wet Space: No  
Addition: No  
Conversion: No

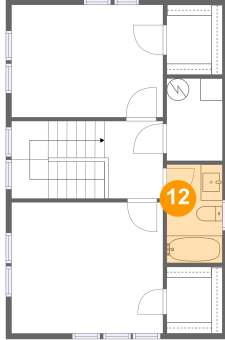
**11 Floor 2 - W.i.c.**

Dimensions: 5'0" x 6'3"  
Area: 31 sq. ft  
Counted as Living Area:  
Yes

Heated: Yes  
Finished: Yes  
Enclosed: Yes  
Contiguous:  
Yes  
Permitted: Yes  
Wet Space: No  
Addition: No  
Conversion: No

# 301-399 North 9th Avenue, Bonneville, Pocatello, Bannock County, Idaho, United States,

## 12 Floor 2 - Bath



Dimensions: 5'0" x 8'10"  
Area: 44 sq. ft  
Counted as Living Area:  
Yes

Heated: Yes  
Finished: Yes  
Enclosed: Yes  
Contiguous:  
Yes  
Permitted: Yes  
Wet Space: Yes  
Addition: No  
Conversion: No

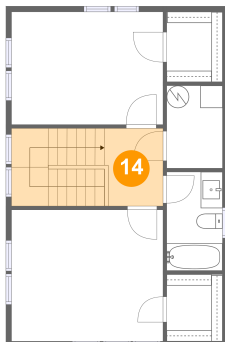
## 13 Floor 2 - Bedroom



Dimensions: 13'7" x 10'1"  
Area: 137 sq. ft  
Counted as Living Area:  
Yes

Heated: Yes  
Finished: Yes  
Enclosed: Yes  
Contiguous:  
Yes  
Permitted: Yes  
Wet Space: No  
Addition: No  
Conversion: No

## 14 Floor 2 - Hall



Dimensions: 5'3" x 6'11"  
Area: 94 sq. ft  
Counted as Living Area:  
Yes

Heated: Yes  
Finished: Yes  
Enclosed: Yes  
Contiguous:  
Yes  
Permitted: Yes  
Wet Space: No  
Addition: No  
Conversion: No