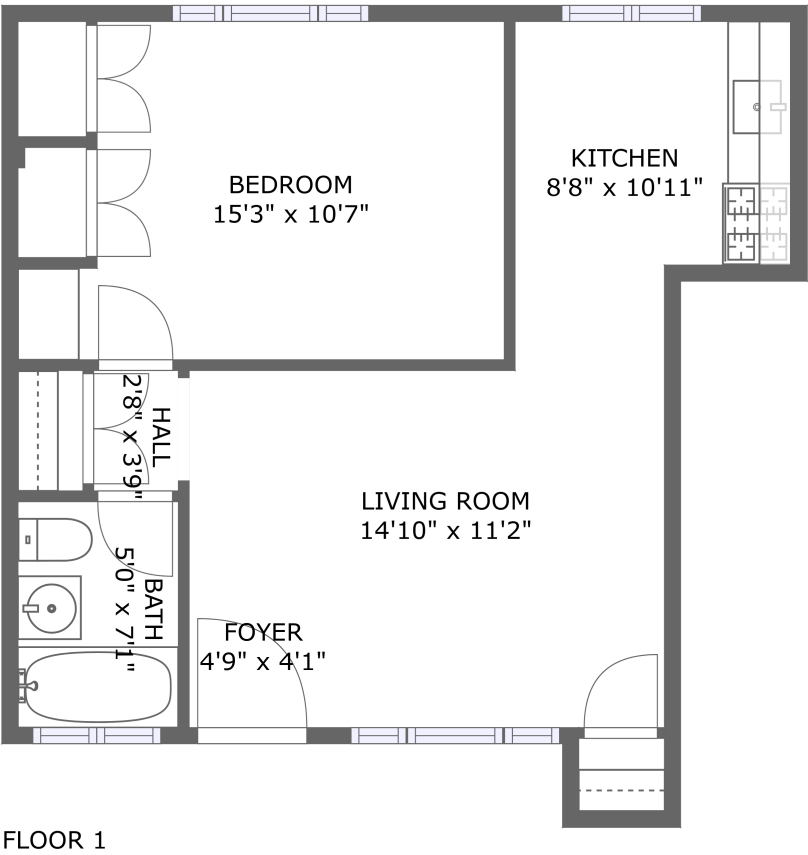


908 N San Vicente Blvd,#3,West Hollywood,CA,US, #3




Total Area: 484 sq. ft

Floor 1: 484 sq. ft

Excluded: Walls: 0 sq. ft

Property summary

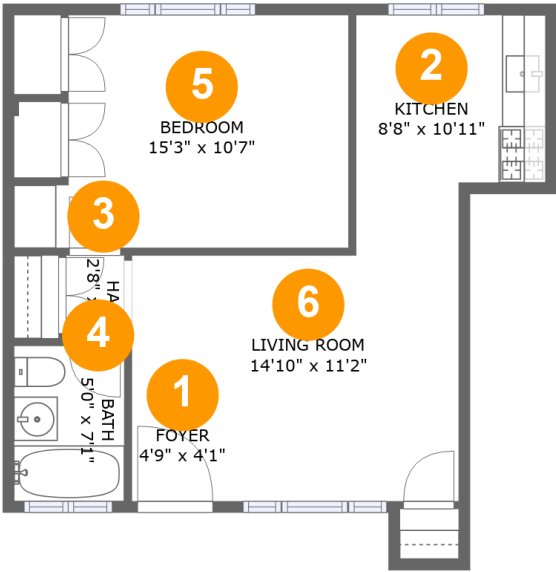
 1 Floors

 1 Bedrooms

 1 Bathrooms

Home report

908 N San Vicente Blvd,#3,West Hollywood,CA,US, #3

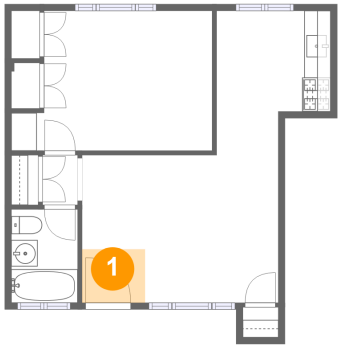


Room dimensions

Floor 1 Total:484sqft Excluded: 0sqft

#		Max Dimensions	sqft	Included
1	Foyer	4'9" x 4'1"	19 sq. ft	Yes
2	Kitchen	8'8" x 10'11"	81 sq. ft	Yes
3	Hall	2'8" x 3'9"	10 sq. ft	Yes
4	Bath	5'0" x 7'1"	36 sq. ft	Yes
5	Bedroom	15'3" x 10'7"	142 sq. ft	Yes
6	Living Room	14'10" x 11'2"	147 sq. ft	Yes

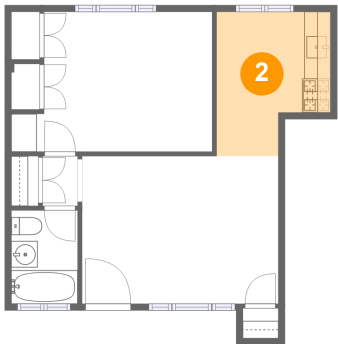
1 Floor 1 - Foyer



Max Dimensions: 4'9" x 4'1"
Calculated Area: 19 sq. ft
Included: Yes

Heated: Yes
Finished: Yes
Enclosed: Yes
Contiguous: Yes
Permitted: Yes
Wet space: No
Addition: No
Conversion: No

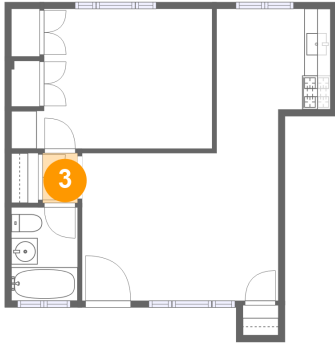
2 Floor 1 - Kitchen



Max Dimensions: 8'8" x 10'11"
Calculated Area: 81 sq. ft
Included: Yes

Heated: Yes
Finished: Yes
Enclosed: Yes
Contiguous: Yes
Permitted: Yes
Wet space: No
Addition: No
Conversion: No

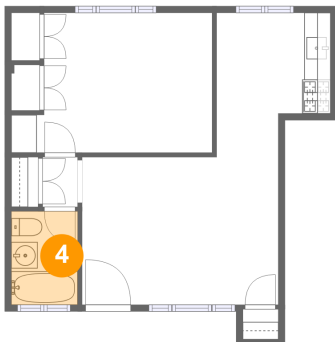
3 Floor 1 - Hall



Max Dimensions: 2'8" x 3'9"
Calculated Area: 10 sq. ft
Included: Yes

Heated: Yes
Finished: Yes
Enclosed: Yes
Contiguous: Yes
Permitted: Yes
Wet space: No
Addition: No
Conversion: No

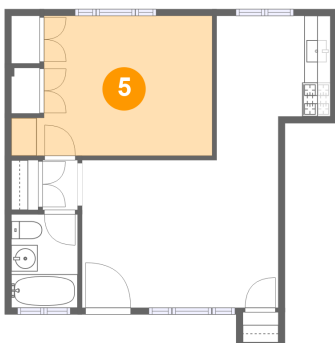
4 Floor 1 - Bath



Max Dimensions: 5'0" x 7'1"
Calculated Area: 36 sq. ft
Included: Yes

Heated: Yes
Finished: Yes
Enclosed: Yes
Contiguous: Yes
Permitted: Yes
Wet space: Yes
Addition: No
Conversion: No

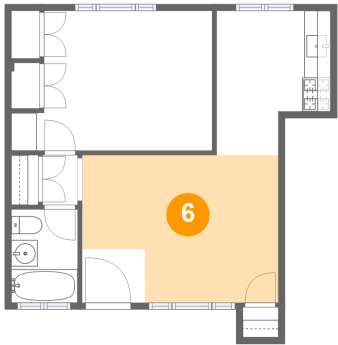
5 Floor 1 - Bedroom



Max Dimensions: 15'3" x 10'7"
Calculated Area: 142 sq. ft
Included: Yes

Heated: Yes
Finished: Yes
Enclosed: Yes
Contiguous: Yes
Permitted: Yes
Wet space: No
Addition: No
Conversion: No

6 Floor 1 - Living Room



Max Dimensions: 14'10" x 11'2"
Calculated Area: 147 sq. ft
Included: Yes

Heated: Yes
Finished: Yes
Enclosed: Yes
Contiguous: Yes
Permitted: Yes
Wet space: No
Addition: No
Conversion: No