



Home report


4664 Whipplewood Court, Branderwood, Roanoke, Roanoke County, Virginia, United States, 24018





Property summary


 **1** Garages


 **4** Bedrooms

 **2** Bathrooms

 **2** Half baths

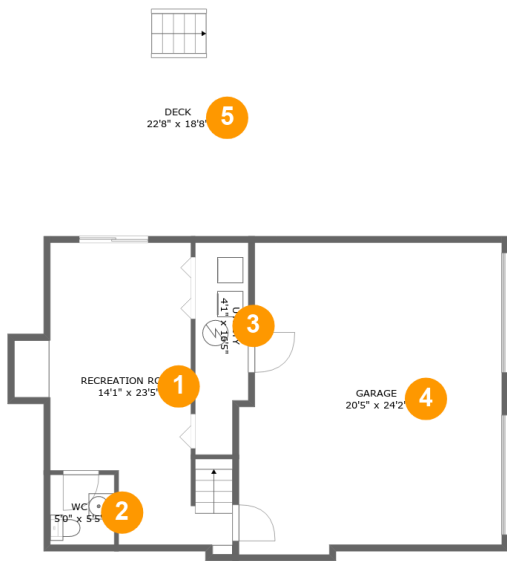
 **3** Floors

 **1,903** Gross living area sqft

 **3,617** Total sqft

Home report

4664 Whipplewood Court, Branderwood, Roanoke, Roanoke County, Virginia, United States, 24018



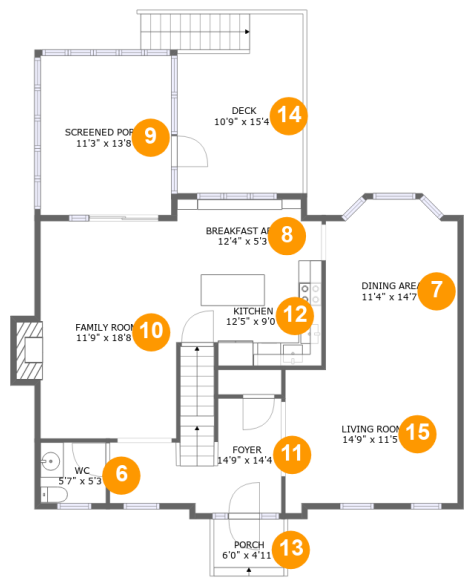
Room dimensions

Floor 1 Total sqft: 1328 Living area: 0

#		Dimensions	sqft	Counted as living area
1	Recreation Room	14'1" x 23'5"	259 sq. ft	No
2	WC	5'0" x 5'5"	27 sq. ft	No
3	Utility	4'1" x 16'5"	63 sq. ft	No
4	Garage	20'5" x 24'2"	467 sq. ft	No
5	Deck	22'8" x 18'8"	424 sq. ft	No

Home report

4664 Whipplewood Court, Branderwood, Roanoke, Roanoke County, Virginia, United States, 24018

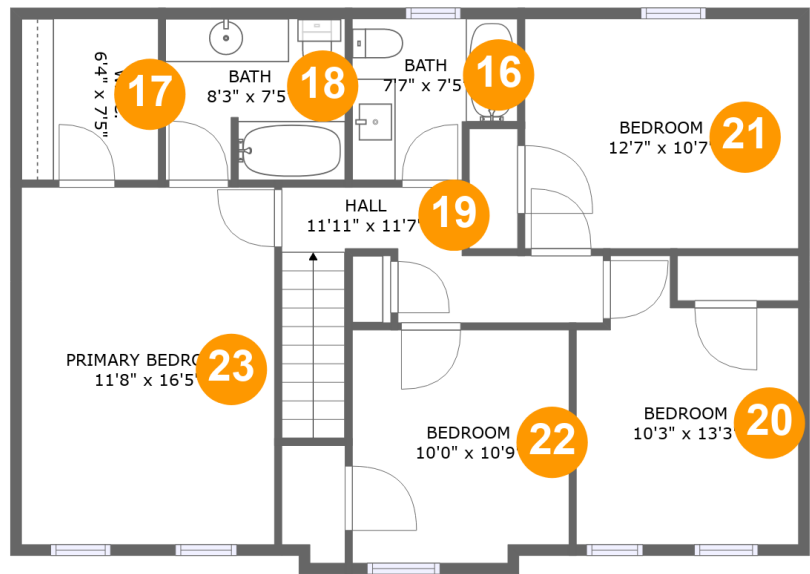


Room dimensions

Floor 2 Total sqft: 1355 Living area: 969

#		Dimensions	sqft	Counted as living area
6	WC	5'7" x 5'3"	29 sq. ft	Yes
7	Dining Area	11'4" x 14'7"	156 sq. ft	Yes
8	Breakfast Area	12'4" x 5'3"	62 sq. ft	Yes
9	Screened Porch	11'3" x 13'8"	153 sq. ft	No
10	Family Room	11'9" x 18'8"	228 sq. ft	Yes
11	Foyer	14'9" x 14'4"	127 sq. ft	Yes
12	Kitchen	12'5" x 9'0"	105 sq. ft	Yes
13	Porch	6'0" x 4'11"	29 sq. ft	No
14	Deck	10'9" x 15'4"	173 sq. ft	No
15	Living Room	14'9" x 11'5"	170 sq. ft	Yes

4664 Whipplewood Court, Branderwood, Roanoke, Roanoke County, Virginia, United States, 24018



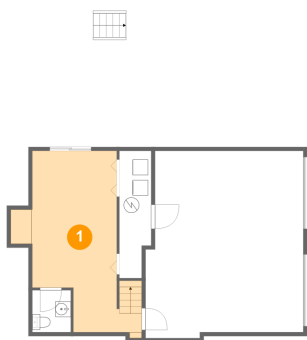
Room dimensions

Floor 3 Total sqft: 934 Living area: 934

#		Dimensions	sqft	Counted as living area
16	Bath	7'7" x 7'5"	50 sq. ft	Yes
17	W.I.C.	6'4" x 7'5"	47 sq. ft	Yes
18	Bath	8'3" x 7'5"	60 sq. ft	Yes
19	Hall	11'11" x 11'7"	79 sq. ft	Yes
20	Bedroom	10'3" x 13'3"	116 sq. ft	Yes
21	Bedroom	12'7" x 10'7"	133 sq. ft	Yes
22	Bedroom	10'0" x 10'9"	105 sq. ft	Yes
23	Primary Bedroom	11'8" x 16'5"	191 sq. ft	Yes

4664 Whipplewood Court, Branderwood, Roanoke, Roanoke County, Virginia, United States, 24018

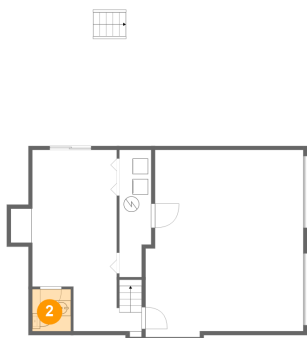
1 Floor 1 - Recreation Room



Dimensions: 14'1" x 23'5"
Area: 259 sq. ft
Counted as living area: No

Heated: Yes
Finished: Yes
Enclosed: Yes
Contiguous: No
Permitted: Yes
Wet space: No
Addition: No
Conversion: No

2 Floor 1 - WC

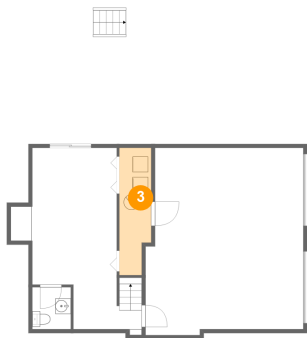


Dimensions: 5'0" x 5'5"
Area: 27 sq. ft
Counted as living area: No

Heated: Yes
Finished: Yes
Enclosed: Yes
Contiguous: No
Permitted: Yes
Wet space: Yes
Addition: No
Conversion: No

4664 Whipplewood Court, Branderwood, Roanoke, Roanoke County, Virginia, United States, 24018

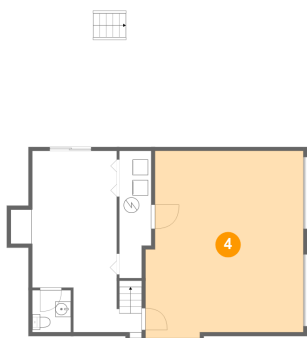
3 Floor 1 - Utility



Dimensions: 4'1" x 16'5"
Area: 63 sq. ft
Counted as living area: No

Heated: Yes
Finished: No
Enclosed: Yes
Contiguous: Yes
Permitted: Yes
Wet space: No
Addition: No
Conversion: No

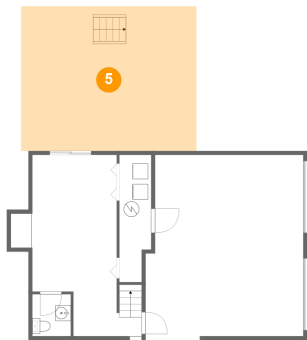
4 Floor 1 - Garage



Dimensions: 20'5" x 24'2"
Area: 467 sq. ft
Counted as living area: No

Heated: No
Finished: No
Enclosed: Yes
Contiguous: Yes
Permitted: Yes
Wet space: No
Addition: No
Conversion: No

5 Floor 1 - Deck

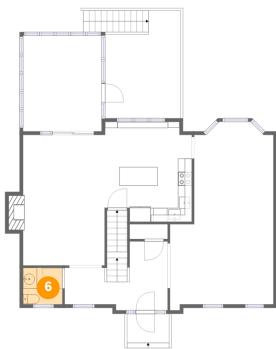


Dimensions: 22'8" x 18'8"
Area: 424 sq. ft
Counted as living area: No

Heated: No
Finished: Yes
Enclosed: No
Contiguous: Yes
Permitted: Yes
Wet space: No
Addition: No
Conversion: No

4664 Whipplewood Court, Branderwood, Roanoke, Roanoke County, Virginia, United States, 24018

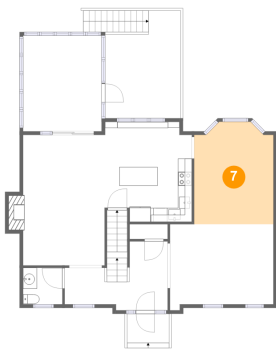
6 Floor 2 - WC



Dimensions: 5'7" x 5'3"
Area: 29 sq. ft
Counted as living area: Yes

Heated: Yes
Finished: Yes
Enclosed: Yes
Contiguous: Yes
Permitted: Yes
Wet space: Yes
Addition: No
Conversion: No

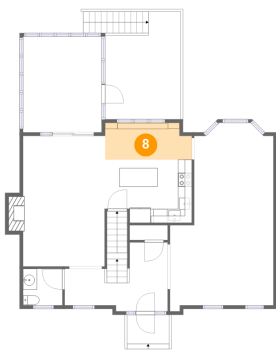
7 Floor 2 - Dining Area



Dimensions: 11'4" x 14'7"
Area: 156 sq. ft
Counted as living area: Yes

Heated: Yes
Finished: Yes
Enclosed: Yes
Contiguous: Yes
Permitted: Yes
Wet space: No
Addition: No
Conversion: No

8 Floor 2 - Breakfast Area

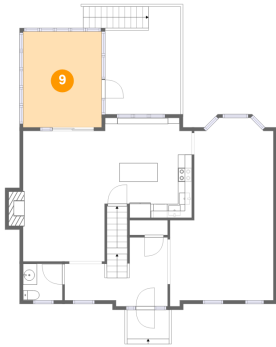


Dimensions: 12'4" x 5'3"
Area: 62 sq. ft
Counted as living area: Yes

Heated: Yes
Finished: Yes
Enclosed: Yes
Contiguous: Yes
Permitted: Yes
Wet space: No
Addition: No
Conversion: No

4664 Whipplewood Court, Branderwood, Roanoke, Roanoke County, Virginia, United States, 24018

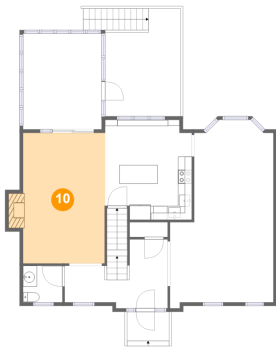
9 Floor 2 - Screened Porch



Dimensions: 11'3" x 13'8"
Area: 153 sq. ft
Counted as living area: No

Heated: No
Finished: Yes
Enclosed: No
Contiguous: Yes
Permitted: Yes
Wet space: No
Addition: No
Conversion: No

10 Floor 2 - Family Room



Dimensions: 11'9" x 18'8"
Area: 228 sq. ft
Counted as living area: Yes

Heated: Yes
Finished: Yes
Enclosed: Yes
Contiguous: Yes
Permitted: Yes
Wet space: No
Addition: No
Conversion: No

11 Floor 2 - Foyer



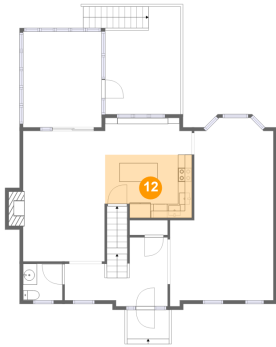
Dimensions: 14'9" x 14'4"
Area: 127 sq. ft
Counted as living area: Yes

Heated: Yes
Finished: Yes
Enclosed: Yes
Contiguous: Yes
Permitted: Yes
Wet space: No
Addition: No
Conversion: No

Home report

4664 Whipplewood Court, Branderwood, Roanoke, Roanoke County, Virginia, United States, 24018

12 Floor 2 - Kitchen



Dimensions: 12'5" x 9'0"
Area: 105 sq. ft
Counted as living area: Yes

Heated: Yes
Finished: Yes
Enclosed: Yes
Contiguous: Yes
Permitted: Yes
Wet space: No
Addition: No
Conversion: No

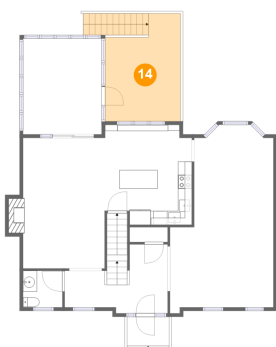
13 Floor 2 - Porch



Dimensions: 6'0" x 4'11"
Area: 29 sq. ft
Counted as living area: No

Heated: No
Finished: Yes
Enclosed: No
Contiguous: Yes
Permitted: Yes
Wet space: No
Addition: No
Conversion: No

14 Floor 2 - Deck



Dimensions: 10'9" x 15'4"
Area: 173 sq. ft
Counted as living area: No

Heated: No
Finished: Yes
Enclosed: No
Contiguous: Yes
Permitted: Yes
Wet space: No
Addition: No
Conversion: No

Home report

4664 Whipplewood Court, Branderwood, Roanoke, Roanoke County, Virginia, United States, 24018

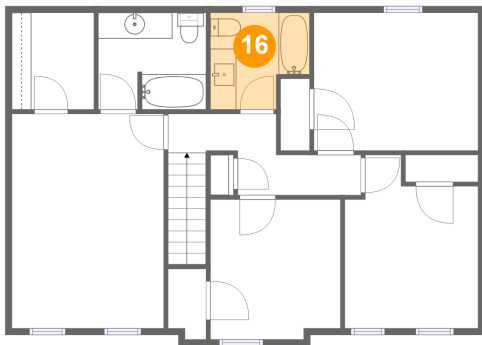
15 Floor 2 - Living Room



Dimensions: 14'9" x 11'5"
Area: 170 sq. ft
Counted as living area: Yes

Heated: Yes
Finished: Yes
Enclosed: Yes
Contiguous: Yes
Permitted: Yes
Wet space: No
Addition: No
Conversion: No

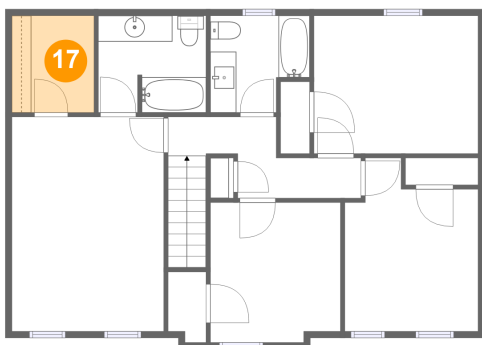
16 Floor 3 - Bath



Dimensions: 7'7" x 7'5"
Area: 50 sq. ft
Counted as living area: Yes

Heated: Yes
Finished: Yes
Enclosed: Yes
Contiguous: Yes
Permitted: Yes
Wet space: Yes
Addition: No
Conversion: No

17 Floor 3 - W.I.C.



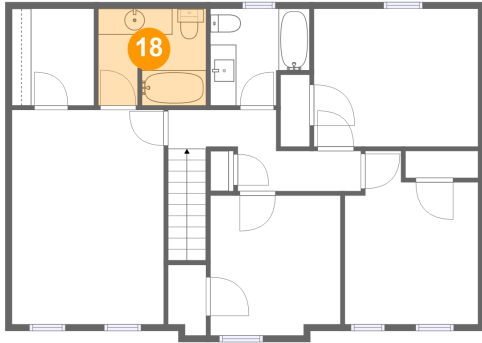
Dimensions: 6'4" x 7'5"
Area: 47 sq. ft
Counted as living area: Yes

Heated: Yes
Finished: Yes
Enclosed: Yes
Contiguous: Yes
Permitted: Yes
Wet space: No
Addition: No
Conversion: No

Home report

4664 Whipplewood Court, Branderwood, Roanoke, Roanoke County, Virginia, United States, 24018

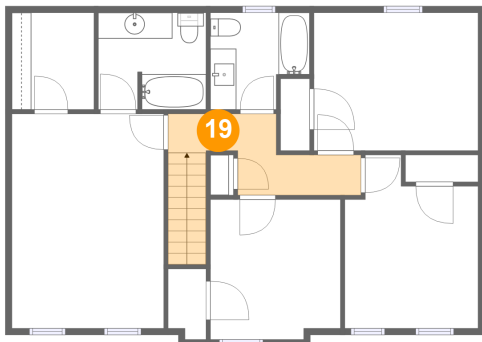
18 Floor 3 - Bath



Dimensions: 8'3" x 7'5"
Area: 60 sq. ft
Counted as living area: Yes

Heated: Yes
Finished: Yes
Enclosed: Yes
Contiguous: Yes
Permitted: Yes
Wet space: Yes
Addition: No
Conversion: No

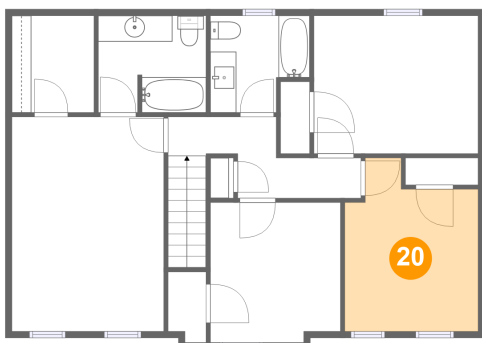
19 Floor 3 - Hall



Dimensions: 11'11" x 11'7"
Area: 79 sq. ft
Counted as living area: Yes

Heated: Yes
Finished: Yes
Enclosed: Yes
Contiguous: Yes
Permitted: Yes
Wet space: No
Addition: No
Conversion: No

20 Floor 3 - Bedroom

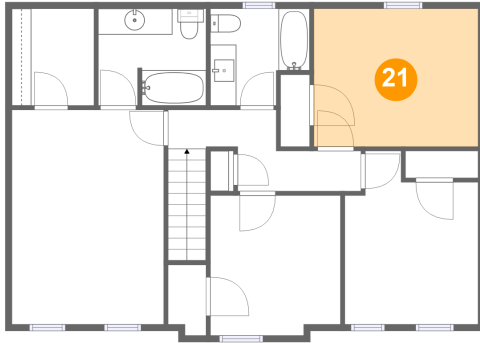


Dimensions: 10'3" x 13'3"
Area: 116 sq. ft
Counted as living area: Yes

Heated: Yes
Finished: Yes
Enclosed: Yes
Contiguous: Yes
Permitted: Yes
Wet space: No
Addition: No
Conversion: No

4664 Whipplewood Court, Branderwood, Roanoke, Roanoke County, Virginia, United States, 24018

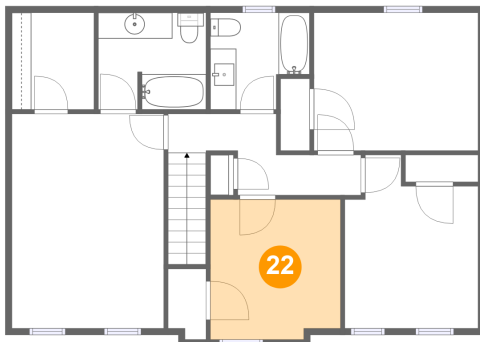
21 Floor 3 - Bedroom



Dimensions: 12'7" x 10'7"
Area: 133 sq. ft
Counted as living area: Yes

Heated: Yes
Finished: Yes
Enclosed: Yes
Contiguous: Yes
Permitted: Yes
Wet space: No
Addition: No
Conversion: No

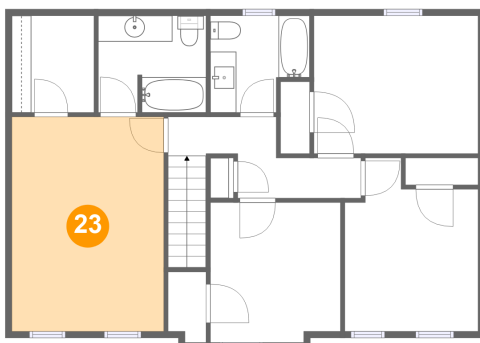
22 Floor 3 - Bedroom



Dimensions: 10'0" x 10'9"
Area: 105 sq. ft
Counted as living area: Yes

Heated: Yes
Finished: Yes
Enclosed: Yes
Contiguous: Yes
Permitted: Yes
Wet space: No
Addition: No
Conversion: No

23 Floor 3 - Primary Bedroom



Dimensions: 11'8" x 16'5"
Area: 191 sq. ft
Counted as living area: Yes

Heated: Yes
Finished: Yes
Enclosed: Yes
Contiguous: Yes
Permitted: Yes
Wet space: No
Addition: No
Conversion: No