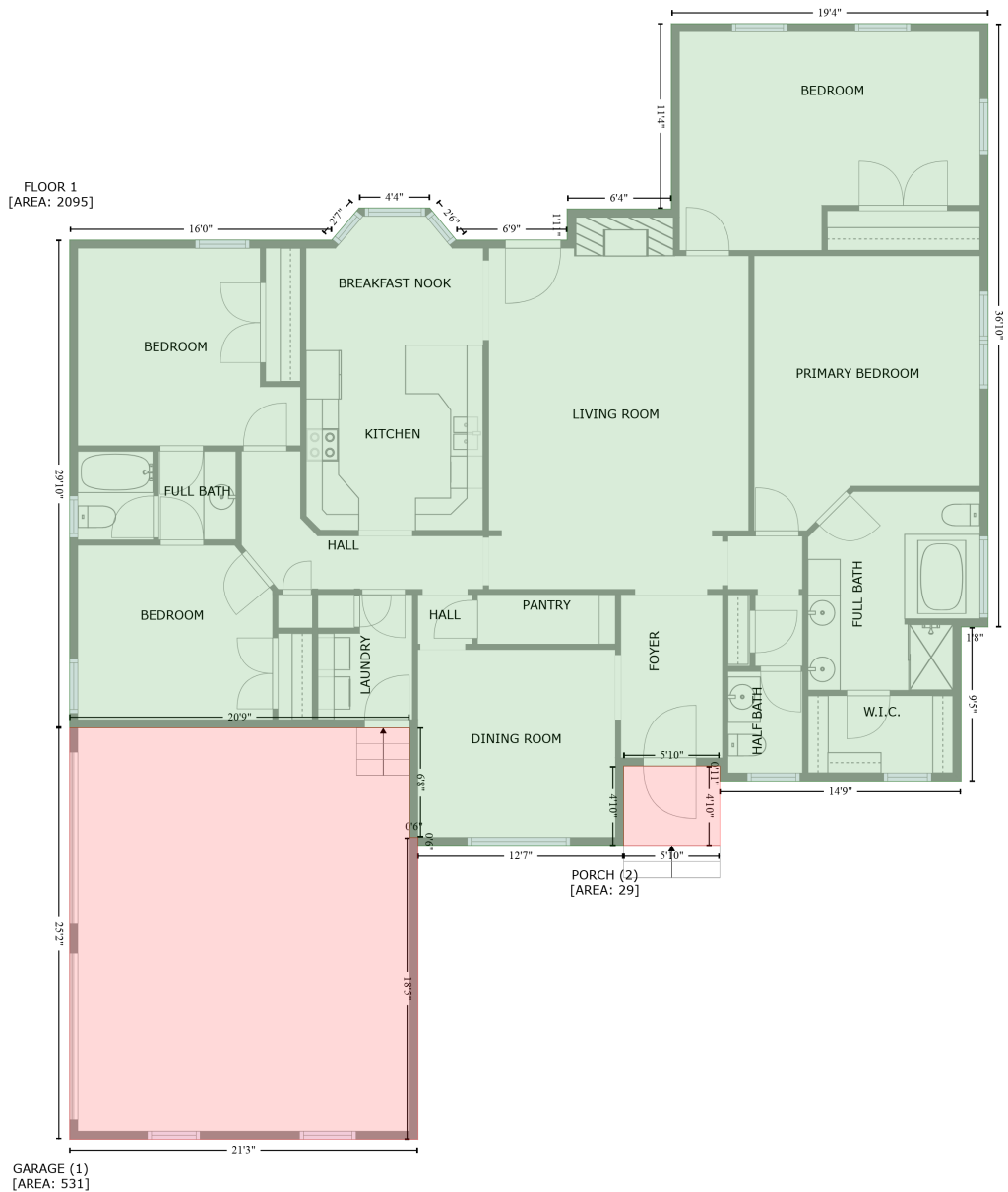


2519 Burton Estates Lane, Lincolnton, Gaston County, North Carolina, United States, 28092

Gross Living Area: 2095 sq. ft



Space	Area (sq. ft)	Calculation
FLOOR 1 (Living area)	2095	Coordinate Polygon Area Algorithm using inches $-((794.4 + 794.4) * (-116.6 - 325.7) + (794.4 + 774.7) * (325.7 - 325.7) + (774.7 + 774.7) * (325.7 - 438.6) + (774.7 + 597.8) * (438.6 - 438.6) + (597.8 + 597.8) * (438.6 - 427.6) + (597.8 + 527.4) * (427.6 - 427.6) + (527.4 + 527.4) * (427.6 - 485.8) + (527.4 + 376.7) * (485.8 - 485.8) + (376.7 + 376.7) * (485.8 - 479.8) + (376.7 + 370.7) * (479.8 - 479.8) + (370.7 + 370.7) * (479.8 - 399.6) + (370.7 + 121.5) * (399.6 - 399.6) + (121.5 + 121.5) * (399.6 - 42) + (121.5 + 313.5) * (42 - 42) + (313.5 + 333.5) * (42 - 18.5) + (333.5 + 385.3) * (18.5 - 18.5) + (385.3 + 404.7) * (18.5 - 42) + (404.7 + 485.9) * (42 - 42) + (485.9 + 485.9) * (42 - 19.2) + (485.9 + 562.3) * (19.2 - 19.2) +$

2519 Burton Estates Lane, Lincolnton, Gaston County, North Carolina, United States, 28092

Gross Living Area: 2095 sq. ft

Space	Area (sq. ft)	Calculation <small>Coordinate Polygon Area Algorithm using inches</small>
GARAGE (Non-living area)	531	$(562.3 + 562.3) * (19.2 - -116.6) + (562.3 + 794.4) * (-116.6 - -116.6) * 0.5 * 0.00694$ $-((370.7 + 370.7) * (399.6 - 479.8) + (370.7 + 376.7) * (479.8 - 479.8) + (376.7 + 376.7) * (479.8 - 701.3) + (376.7 + 121.5) * (701.3 - 701.3) + (121.5 + 121.5) * (701.3 - 399.6) + (121.5 + 370.7) * (399.6 - 399.6)) * 0.5 * 0.00694$
PORCH (Non-living area)	29	$-((597.8 + 597.8) * (427.6 - 485.8) + (597.8 + 527.4) * (485.8 - 485.8) + (527.4 + 527.4) * (485.8 - 427.6) + (527.4 + 597.8) * (427.6 - 427.6)) * 0.5 * 0.00694$