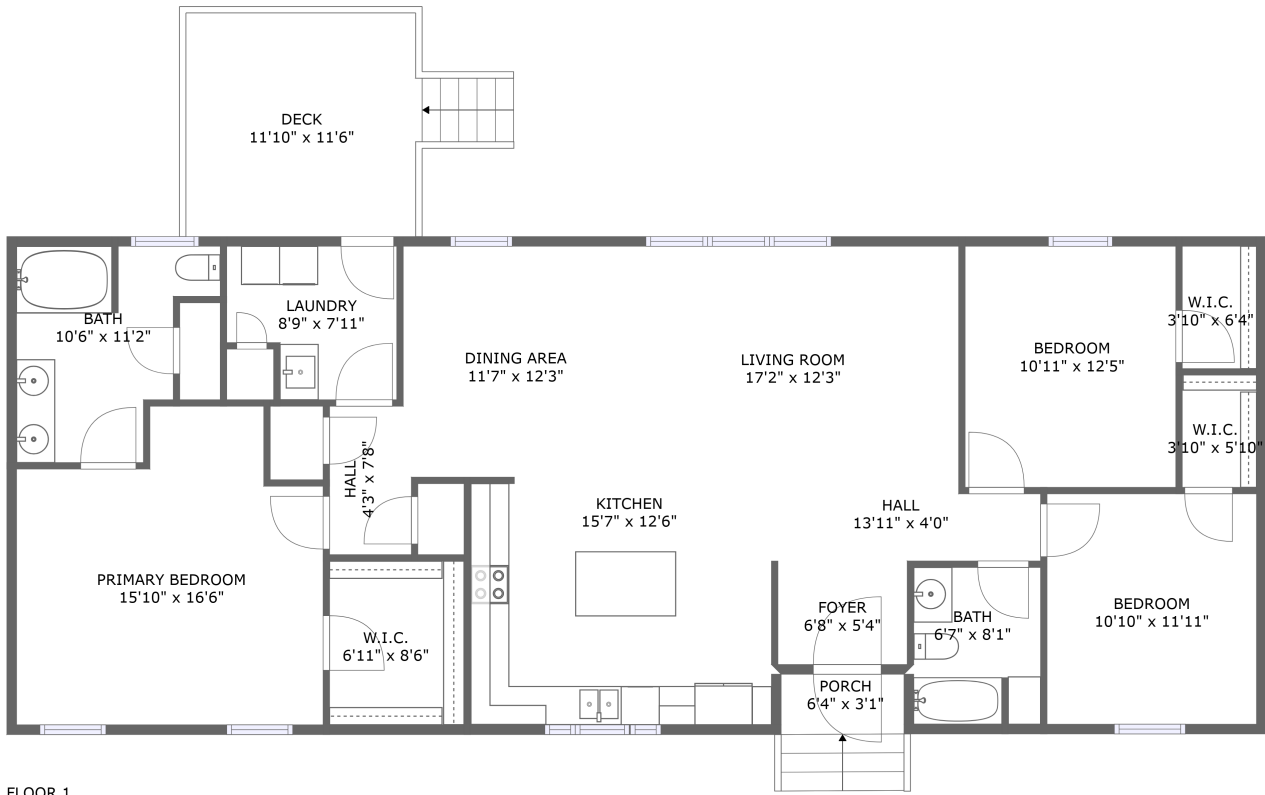


756 Wysong Mill Road, Hardy, Franklin County, Virginia, United States, 24101



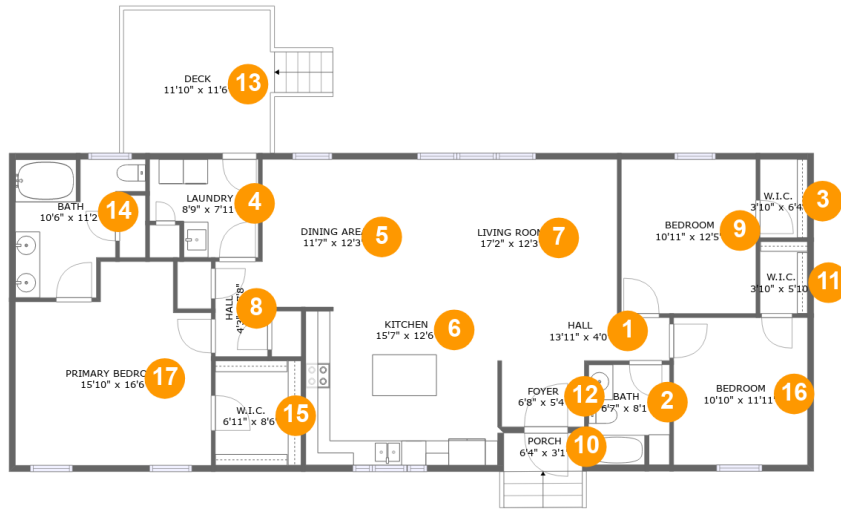
FLOOR 1

Property Summary

 **0** garages  **3** bedrooms  **2** bathrooms  **0** half baths

 **1** floors  **1,514** Gross Living Area sqft  **1,847** total sqft

756 Wysong Mill Road, Hardy, Franklin County, Virginia, United States, 24101



Room Dimensions

Floor 1

Total sqft: 1847

Living area: 1514

#	Room name	Dimensions	Area (sqft)	Counted as Living Area
1	Hall	13'11" x 4'0"	53 sq. ft	Yes
2	Bath	6'7" x 8'1"	48 sq. ft	Yes
3	W.i.c.	3'10" x 6'4"	24 sq. ft	Yes
4	Laundry	8'9" x 7'11"	62 sq. ft	Yes
5	Dining Area	11'7" x 12'3"	140 sq. ft	Yes
6	Kitchen	15'7" x 12'6"	194 sq. ft	Yes
7	Living Room	17'2" x 12'3"	210 sq. ft	Yes
8	Hall	4'3" x 7'8"	31 sq. ft	Yes
9	Bedroom	10'11" x 12'5"	136 sq. ft	Yes
10	Porch	6'4" x 3'1"	38 sq. ft	No
11	W.i.c.	3'10" x 5'10"	22 sq. ft	Yes

Scan captured on Wed, 17 Jul 2024 15:34:56 GMT

Information is calculated by CubiCasa technology; deemed highly reliable but not guaranteed.

**756 Wysong Mill Road, Hardy, Franklin County,
Virginia, United States, 24101**

#	Room name	Dimensions	Area (sqft)	Counted as Living Area
12	Foyer	6'8" x 5'4"	36 sq. ft	Yes
13	Deck	11'10" x 11'6"	154 sq. ft	No
14	Bath	10'6" x 11'2"	91 sq. ft	Yes
15	W.i.c.	6'11" x 8'6"	59 sq. ft	Yes
16	Bedroom	10'10" x 11'11"	129 sq. ft	No
17	Primary Bedroom	15'10" x 16'6"	226 sq. ft	Yes

756 Wysong Mill Road, Hardy, Franklin County, Virginia, United States, 24101

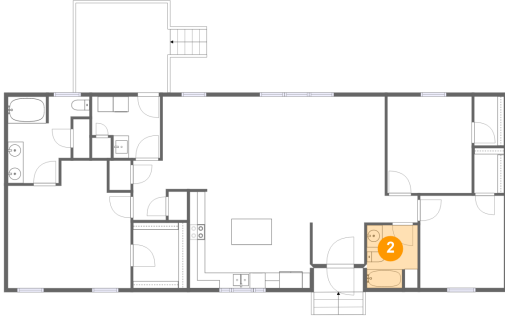
1 Floor 1 - Hall



Dimensions: 13'11" x 4'0"
Area: 53 sq. ft
Counted as Living Area:
Yes

Heated: Yes
Finished: Yes
Enclosed: Yes
Contiguous:
Yes
Permitted: Yes
Wet Space: No
Addition: No
Conversion: No

2 Floor 1 - Bath



Dimensions: 6'7" x 8'1"
Area: 48 sq. ft
Counted as Living Area:
Yes

Heated: Yes
Finished: Yes
Enclosed: Yes
Contiguous:
Yes
Permitted: Yes
Wet Space: Yes
Addition: No
Conversion: No

756 Wysong Mill Road, Hardy, Franklin County, Virginia, United States, 24101

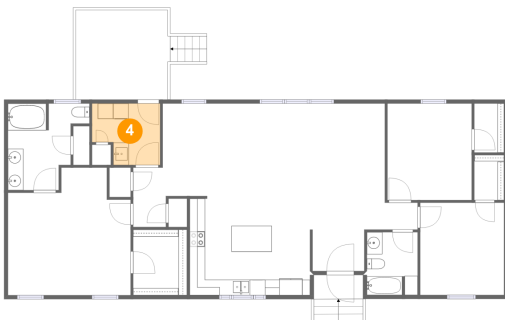
3 Floor 1 - W.i.c.



Dimensions: 3'10" x 6'4"
Area: 24 sq. ft
Counted as Living Area:
Yes

Heated: Yes
Finished: Yes
Enclosed: Yes
Contiguous:
Yes
Permitted: Yes
Wet Space: No
Addition: No
Conversion: No

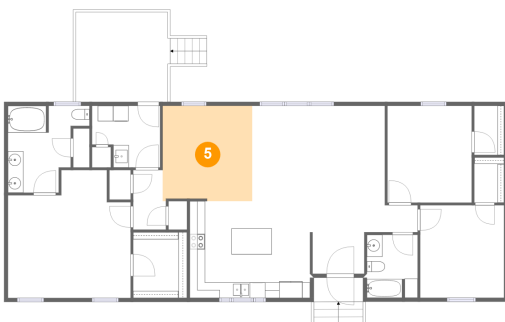
4 Floor 1 - Laundry



Dimensions: 8'9" x 7'11"
Area: 62 sq. ft
Counted as Living Area:
Yes

Heated: Yes
Finished: Yes
Enclosed: Yes
Contiguous:
Yes
Permitted: Yes
Wet Space: No
Addition: No
Conversion: No

5 Floor 1 - Dining Area

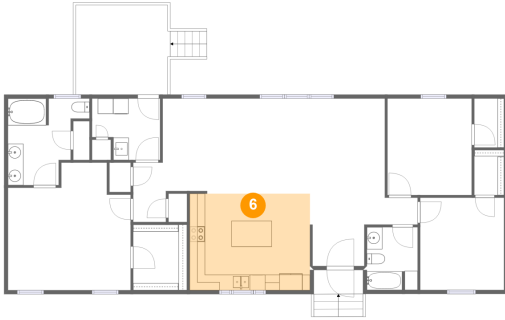


Dimensions: 11'7" x 12'3"
Area: 140 sq. ft
Counted as Living Area:
Yes

Heated: Yes
Finished: Yes
Enclosed: Yes
Contiguous:
Yes
Permitted: Yes
Wet Space: No
Addition: No
Conversion: No

756 Wysong Mill Road, Hardy, Franklin County, Virginia, United States, 24101

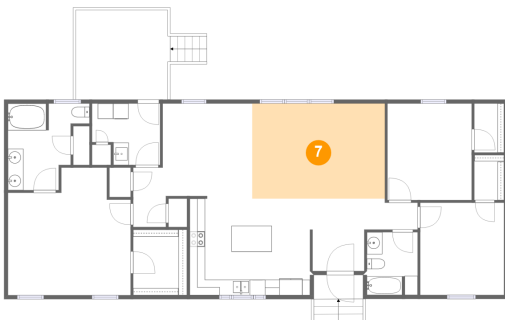
6 Floor 1 - Kitchen



Dimensions: 15'7" x 12'6"
Area: 194 sq. ft
Counted as Living Area:
Yes

Heated: Yes
Finished: Yes
Enclosed: Yes
Contiguous:
Yes
Permitted: Yes
Wet Space: No
Addition: No
Conversion: No

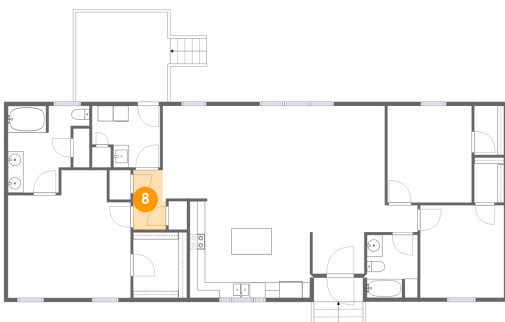
7 Floor 1 - Living Room



Dimensions: 17'2" x 12'3"
Area: 210 sq. ft
Counted as Living Area:
Yes

Heated: Yes
Finished: Yes
Enclosed: Yes
Contiguous:
Yes
Permitted: Yes
Wet Space: No
Addition: No
Conversion: No

8 Floor 1 - Hall

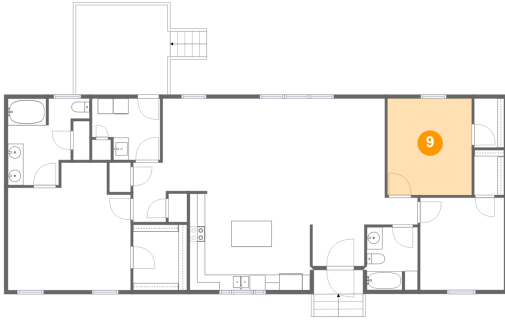


Dimensions: 4'3" x 7'8"
Area: 31 sq. ft
Counted as Living Area:
Yes

Heated: Yes
Finished: Yes
Enclosed: Yes
Contiguous:
Yes
Permitted: Yes
Wet Space: No
Addition: No
Conversion: No

756 Wysong Mill Road, Hardy, Franklin County, Virginia, United States, 24101

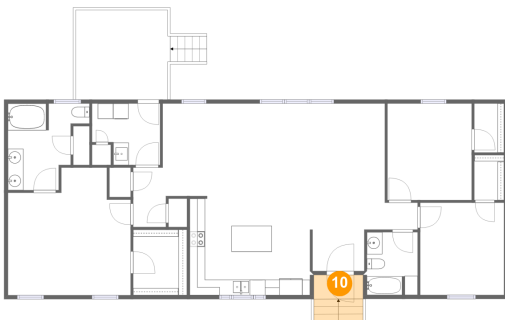
9 Floor 1 - Bedroom



Dimensions: 10'11" x 12'5"
Area: 136 sq. ft
Counted as Living Area:
Yes

Heated: Yes
Finished: Yes
Enclosed: Yes
Contiguous:
Yes
Permitted: Yes
Wet Space: No
Addition: No
Conversion: No

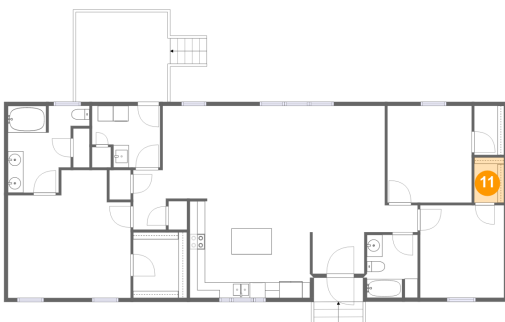
10 Floor 1 - Porch



Dimensions: 6'4" x 3'1"
Area: 38 sq. ft
Counted as Living Area: No

Heated: No
Finished: Yes
Enclosed: No
Contiguous: Yes
Permitted: Yes
Wet Space: No
Addition: No
Conversion: No

11 Floor 1 - W.i.c.

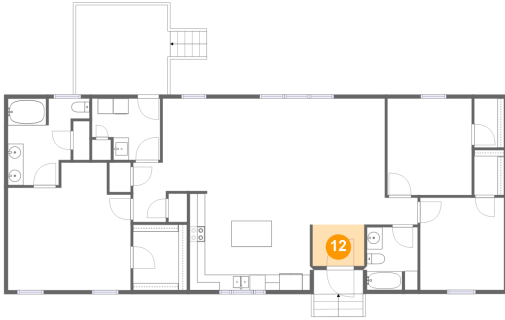


Dimensions: 3'10" x 5'10"
Area: 22 sq. ft
Counted as Living Area:
Yes

Heated: Yes
Finished: Yes
Enclosed: Yes
Contiguous:
Yes
Permitted: Yes
Wet Space: No
Addition: No
Conversion: No

756 Wysong Mill Road, Hardy, Franklin County, Virginia, United States, 24101

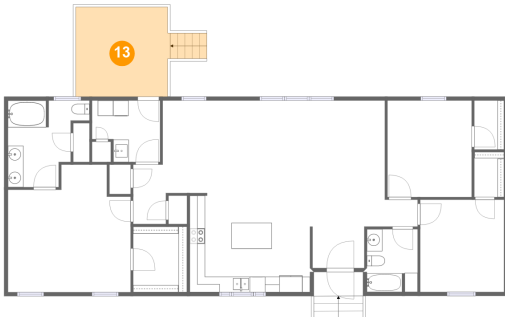
12 Floor 1 - Foyer



Dimensions: 6'8" x 5'4"
Area: 36 sq. ft
Counted as Living Area:
Yes

Heated: Yes
Finished: Yes
Enclosed: Yes
Contiguous:
Yes
Permitted: Yes
Wet Space: No
Addition: No
Conversion: No

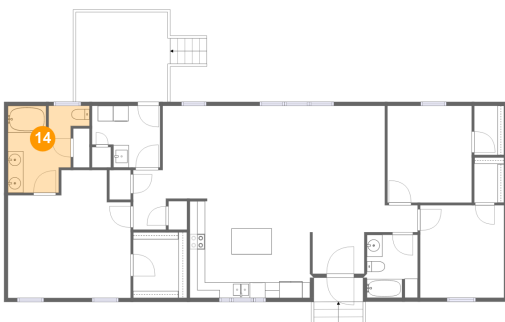
13 Floor 1 - Deck



Dimensions: 11'10" x 11'6"
Area: 154 sq. ft
Counted as Living Area: No

Heated: No
Finished: Yes
Enclosed: No
Contiguous: Yes
Permitted: Yes
Wet Space: No
Addition: No
Conversion: No

14 Floor 1 - Bath

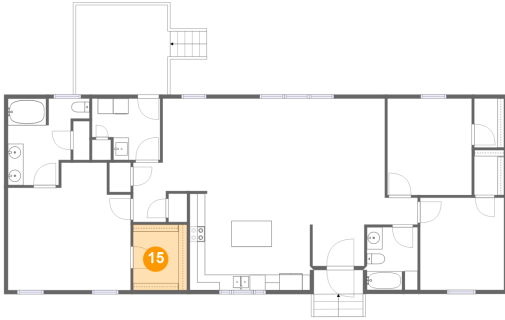


Dimensions: 10'6" x 11'2"
Area: 91 sq. ft
Counted as Living Area:
Yes

Heated: Yes
Finished: Yes
Enclosed: Yes
Contiguous:
Yes
Permitted: Yes
Wet Space: Yes
Addition: No
Conversion: No

**756 Wysong Mill Road, Hardy, Franklin County,
Virginia, United States, 24101**

15 Floor 1 - W.i.c.



Dimensions: 6'11" x 8'6"
Area: 59 sq. ft
Counted as Living Area:
Yes

Heated: Yes
Finished: Yes
Enclosed: Yes
Contiguous:
Yes
Permitted: Yes
Wet Space: No
Addition: No
Conversion: No

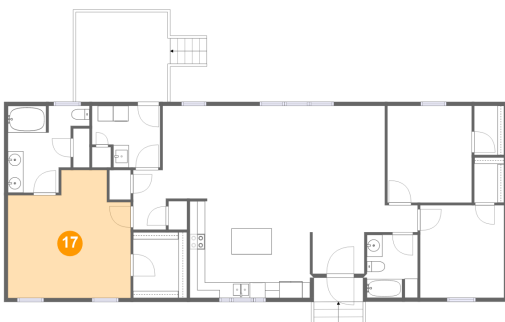
16 Floor 1 - Bedroom



Dimensions: 10'10" x 11'11"
Area: 129 sq. ft
Counted as Living Area: No

Heated: Yes
Finished: Yes
Enclosed: Yes
Contiguous: Yes
Permitted: Yes
Wet Space: No
Addition: No
Conversion: No

17 Floor 1 - Primary Bedroom



Dimensions: 15'10" x 16'6"
Area: 226 sq. ft
Counted as Living Area:
Yes

Heated: Yes
Finished: Yes
Enclosed: Yes
Contiguous:
Yes
Permitted: Yes
Wet Space: No
Addition: No
Conversion: No