

TOTAL: 264 sq. ft

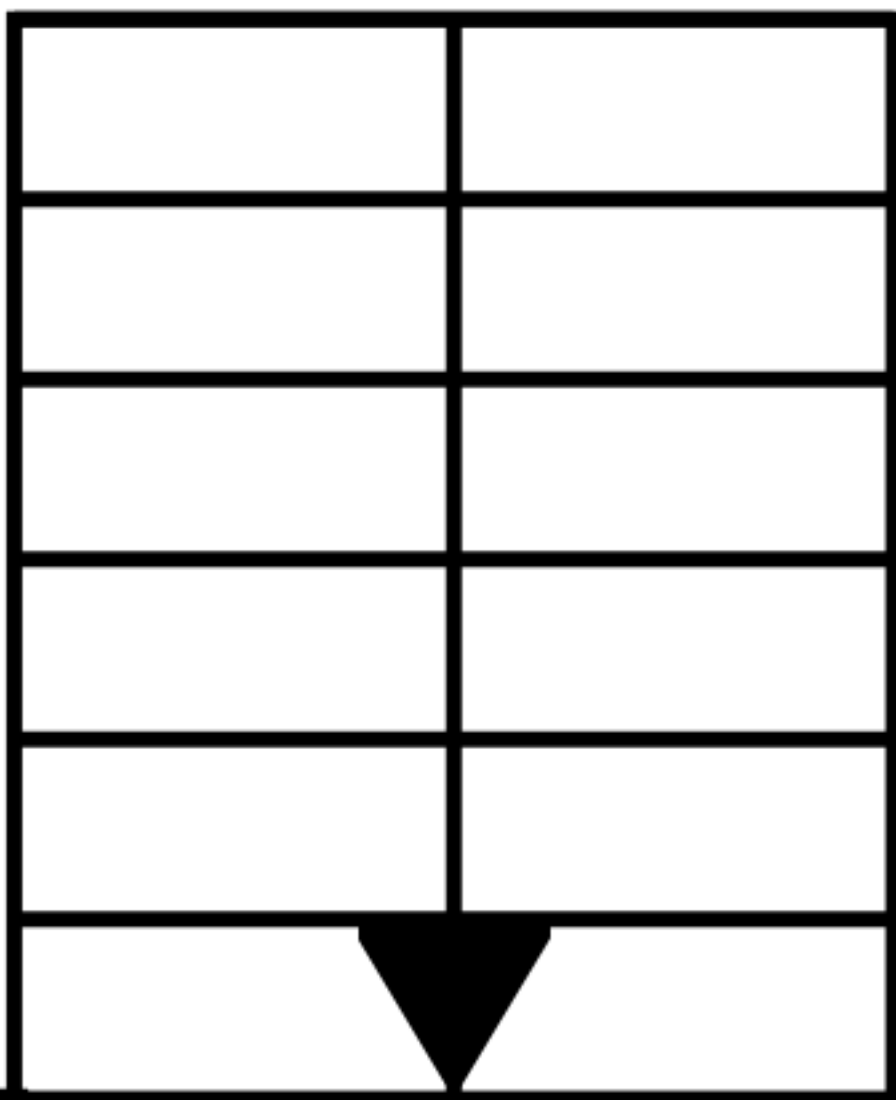
FLOOR 1: 264 sq. ft, FLOOR 2: 0 sq. ft

EXCLUDED AREAS: PORCH: 70 sq. ft, OPEN TO BELOW: 75 sq. ft, LOW CEILING: 71 sq. ft

WALLS: 63 sq. ft



Open To Below



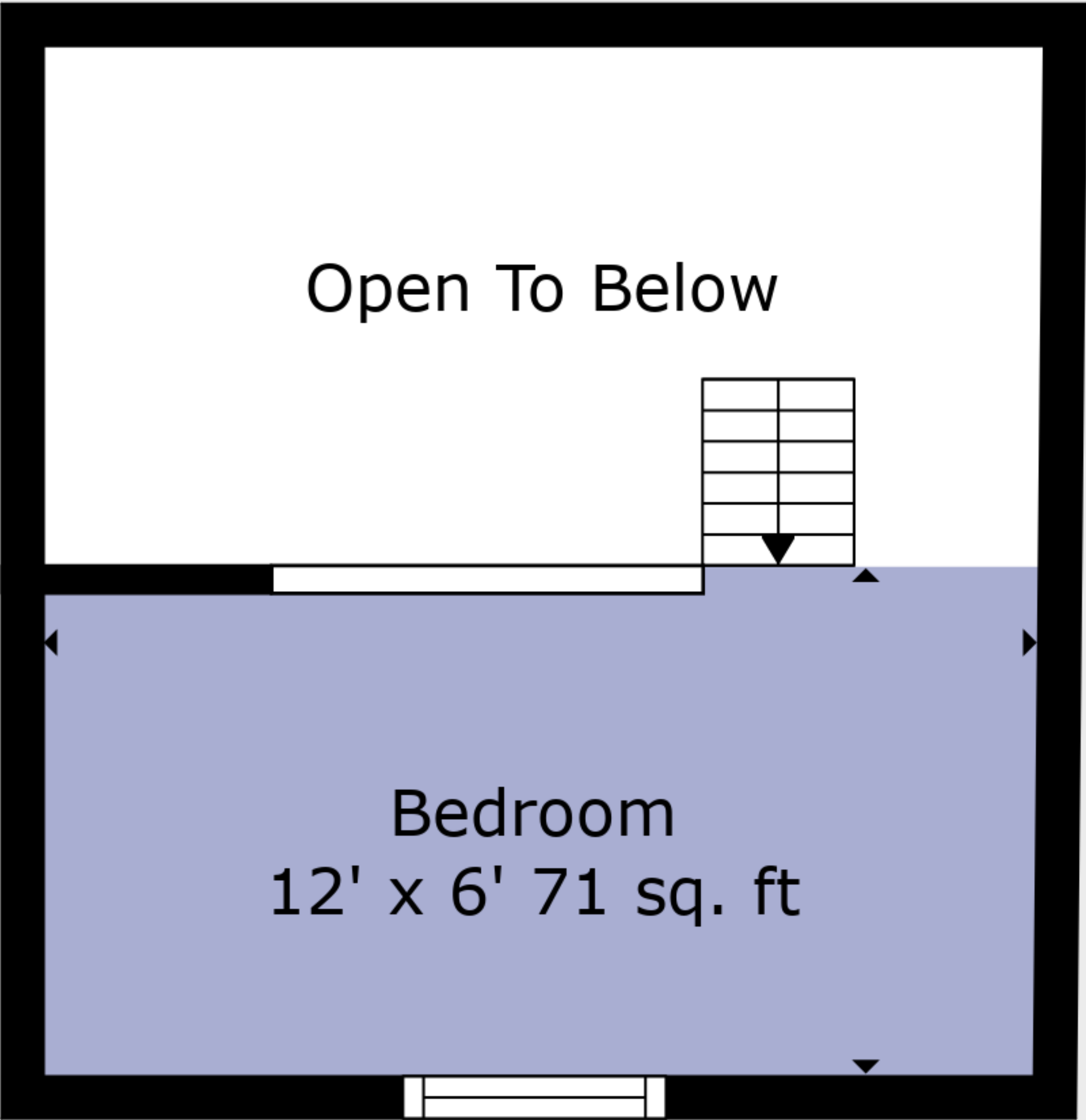
Bedroom
12' x 6' 71 sq. ft

TOTAL: 264 sq. ft

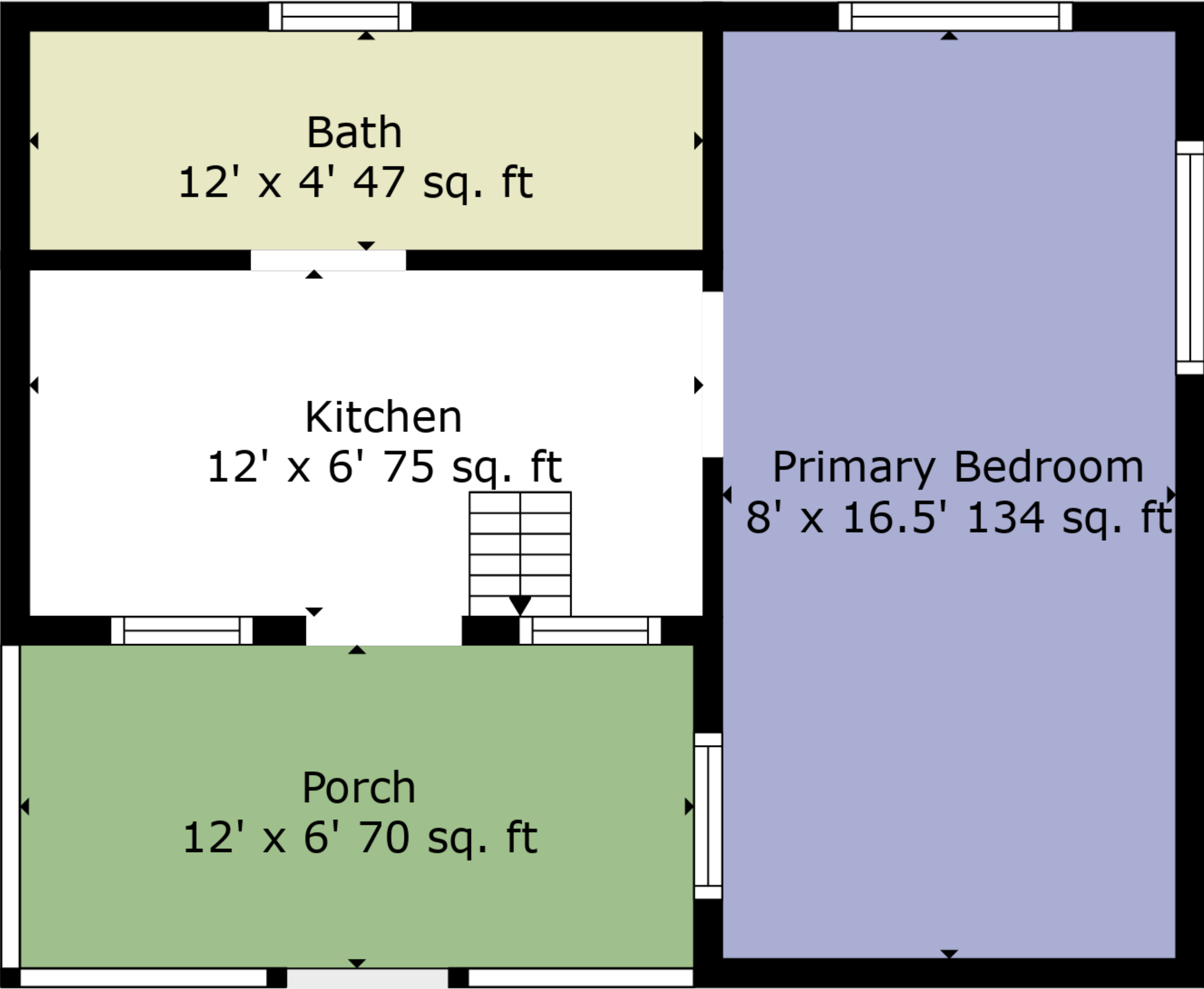
FLOOR 1: 264 sq. ft, FLOOR 2: 0 sq. ft

EXCLUDED AREAS: PORCH: 70 sq. ft, OPEN TO BELOW: 75 sq. ft, LOW CEILING: 71 sq. ft
WALLS: 63 sq. ft





Floor 2



Floor 1

TOTAL: 264 sq. ft
FLOOR 1: 264 sq. ft, FLOOR 2: 0 sq. ft
EXCLUDED AREAS: PORCH: 70 sq. ft, OPEN TO BELOW: 75 sq. ft, LOW CEILING: 71 sq. ft
WALLS: 63 sq. ft

