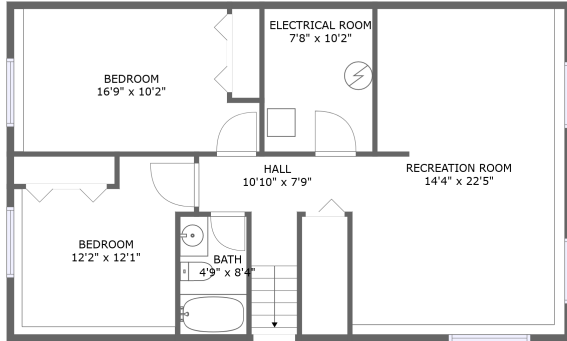
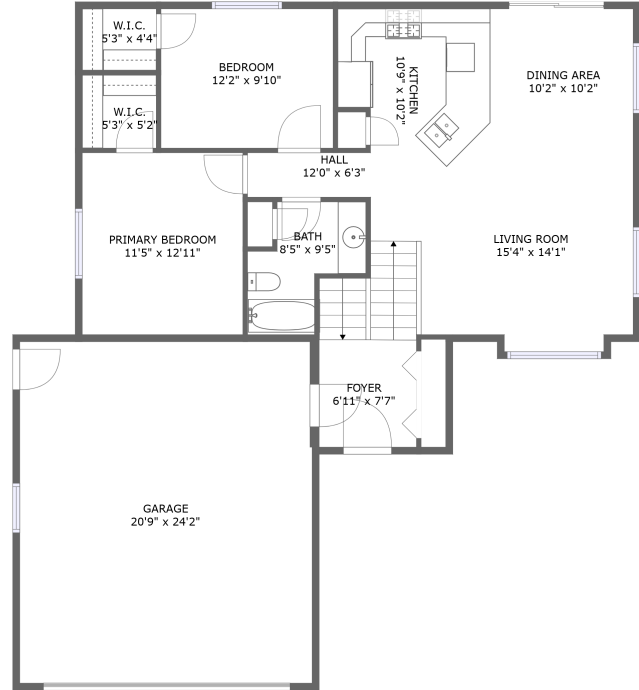


650 Yukon Way, Whitewood, SD, US




FLOOR 1



FLOOR 2

Property summary

 **1** Garages

 **4** Bedrooms

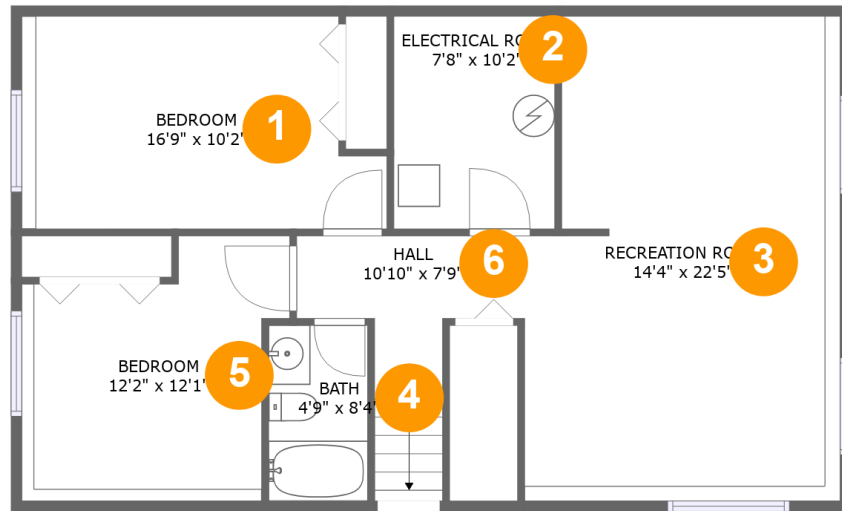
 **2** Bathrooms

 **0** Half baths

 **2** Floors

 **1,938** Gross living area sqft

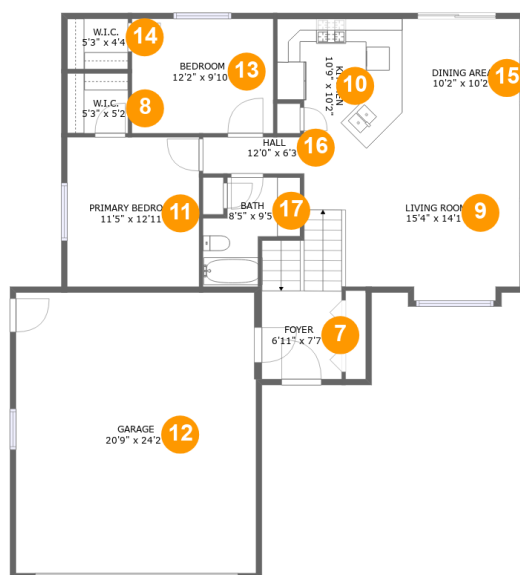
 **2,554** Total sqft

650 Yukon Way,Whitewood,SD,US**Room dimensions**

Floor 1

Total sqft: 965 Living area: 883

#		Dimensions	sqft	Counted as living area
1	Bedroom	16'9" x 10'2"	161 sq. ft	Yes
2	Electrical Room	7'8" x 10'2"	78 sq. ft	No
3	Recreation Room	14'4" x 22'5"	328 sq. ft	Yes
4	Bath	4'9" x 8'4"	39 sq. ft	Yes
5	Bedroom	12'2" x 12'1"	133 sq. ft	Yes
6	Hall	10'10" x 7'9"	71 sq. ft	Yes

650 Yukon Way, Whitewood, SD, US**Room dimensions**

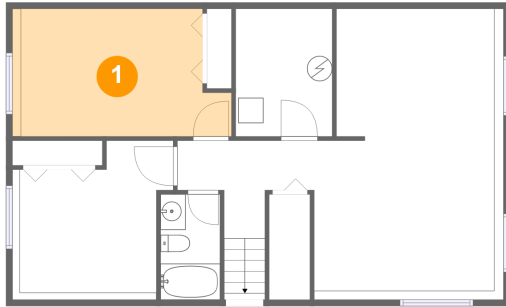
Floor 2

Total sqft: 1589 Living area: 1055

#		Dimensions	sqft	Counted as living area
7	Foyer	6'11" x 7'7"	83 sq. ft	Yes
8	W.I.C.	5'3" x 5'2"	27 sq. ft	Yes
9	Living Room	15'4" x 14'1"	207 sq. ft	Yes
10	Kitchen	10'9" x 10'2"	103 sq. ft	Yes
11	Primary Bedroom	11'5" x 12'11"	147 sq. ft	Yes
12	Garage	20'9" x 24'2"	500 sq. ft	No
13	Bedroom	12'2" x 9'10"	120 sq. ft	Yes
14	W.I.C.	5'3" x 4'4"	23 sq. ft	Yes
15	Dining Area	10'2" x 10'2"	104 sq. ft	Yes
16	Hall	12'0" x 6'3"	56 sq. ft	Yes
17	Bath	8'5" x 9'5"	56 sq. ft	Yes

650 Yukon Way, Whitewood, SD, US

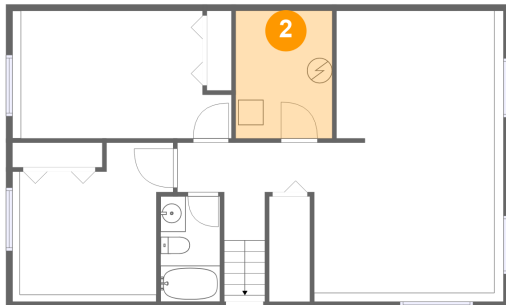
1 Floor 1 - Bedroom



Dimensions: 16'9" x 10'2"
Area: 161 sq. ft
Counted as living area: Yes

Heated: Yes
Finished: Yes
Enclosed: Yes
Contiguous: Yes
Permitted: Yes
Wet space: No
Addition: No
Conversion: No

2 Floor 1 - Electrical Room

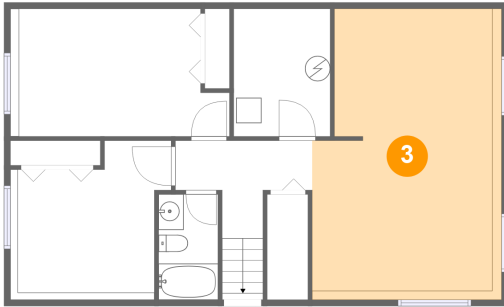


Dimensions: 7'8" x 10'2"
Area: 78 sq. ft
Counted as living area: No

Heated: No
Finished: No
Enclosed: Yes
Contiguous: Yes
Permitted: Yes
Wet space: No
Addition: No
Conversion: No

650 Yukon Way, Whitewood, SD, US

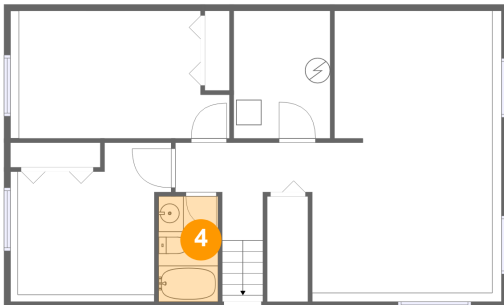
3 Floor 1 - Recreation Room



Dimensions: 14'4" x 22'5"
Area: 328 sq. ft
Counted as living area: Yes

Heated: Yes
Finished: Yes
Enclosed: Yes
Contiguous: Yes
Permitted: Yes
Wet space: No
Addition: No
Conversion: No

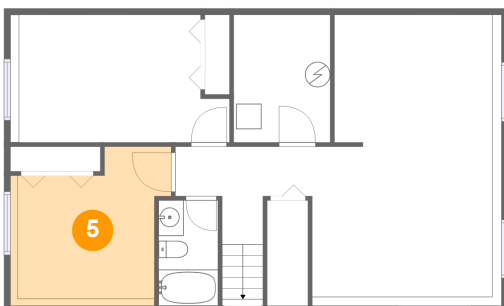
4 Floor 1 - Bath



Dimensions: 4'9" x 8'4"
Area: 39 sq. ft
Counted as living area: Yes

Heated: Yes
Finished: Yes
Enclosed: Yes
Contiguous: Yes
Permitted: Yes
Wet space: Yes
Addition: No
Conversion: No

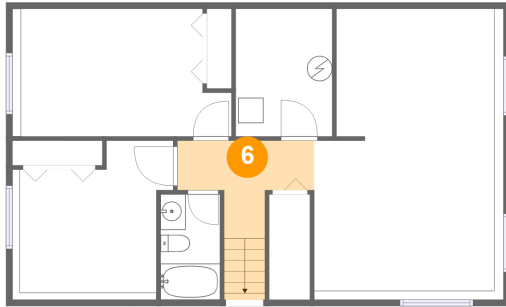
5 Floor 1 - Bedroom



Dimensions: 12'2" x 12'1"
Area: 133 sq. ft
Counted as living area: Yes

Heated: Yes
Finished: Yes
Enclosed: Yes
Contiguous: Yes
Permitted: Yes
Wet space: No
Addition: No
Conversion: No

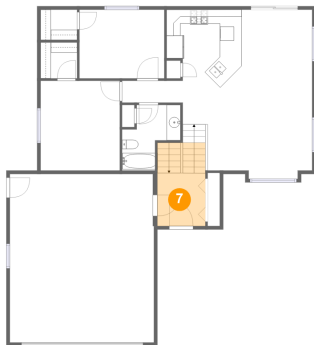
6 Floor 1 - Hall



Dimensions: 10'10" x 7'9"
Area: 71 sq. ft
Counted as living area: Yes

Heated: Yes
Finished: Yes
Enclosed: Yes
Contiguous: Yes
Permitted: Yes
Wet space: No
Addition: No
Conversion: No

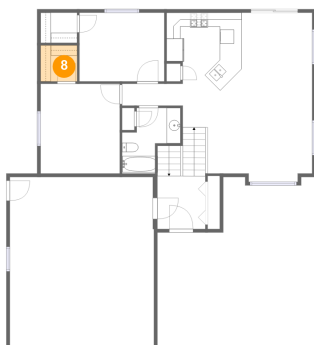
7 Floor 2 - Foyer



Dimensions: 6'11" x 7'7"
Area: 83 sq. ft
Counted as living area: Yes

Heated: Yes
Finished: Yes
Enclosed: Yes
Contiguous: Yes
Permitted: Yes
Wet space: No
Addition: No
Conversion: No

8 Floor 2 - W.I.C.

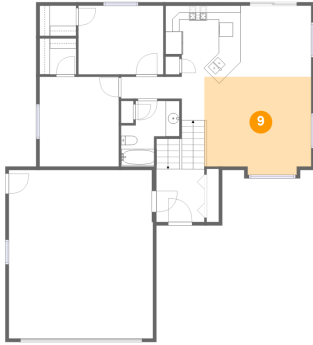


Dimensions: 5'3" x 5'2"
Area: 27 sq. ft
Counted as living area: Yes

Heated: Yes
Finished: Yes
Enclosed: Yes
Contiguous: Yes
Permitted: Yes
Wet space: No
Addition: No
Conversion: No

650 Yukon Way, Whitewood, SD, US

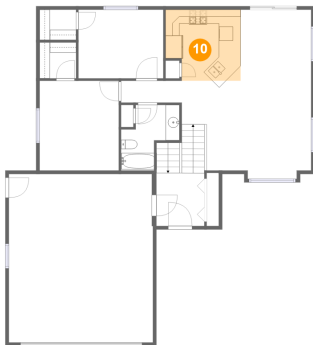
9 Floor 2 - Living Room



Dimensions: 15'4" x 14'1"
Area: 207 sq. ft
Counted as living area: Yes

Heated: Yes
Finished: Yes
Enclosed: Yes
Contiguous: Yes
Permitted: Yes
Wet space: No
Addition: No
Conversion: No

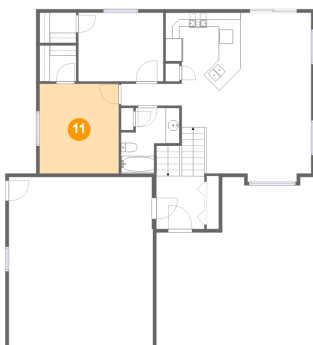
10 Floor 2 - Kitchen



Dimensions: 10'9" x 10'2"
Area: 103 sq. ft
Counted as living area: Yes

Heated: Yes
Finished: Yes
Enclosed: Yes
Contiguous: Yes
Permitted: Yes
Wet space: No
Addition: No
Conversion: No

11 Floor 2 - Primary Bedroom

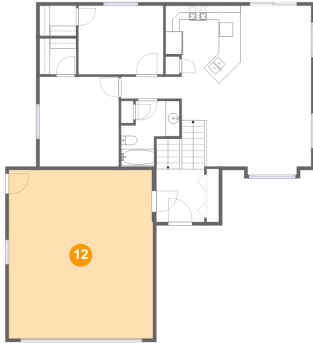


Dimensions: 11'5" x 12'11"
Area: 147 sq. ft
Counted as living area: Yes

Heated: Yes
Finished: Yes
Enclosed: Yes
Contiguous: Yes
Permitted: Yes
Wet space: No
Addition: No
Conversion: No

650 Yukon Way, Whitewood, SD, US

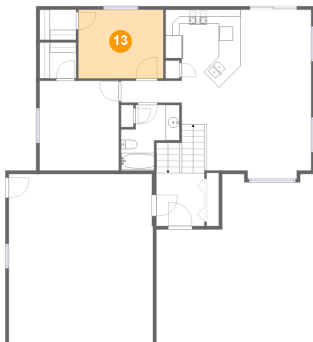
12 Floor 2 - Garage



Dimensions: 20'9" x 24'2"
Area: 500 sq. ft
Counted as living area: No

Heated: No
Finished: No
Enclosed: Yes
Contiguous: Yes
Permitted: Yes
Wet space: No
Addition: No
Conversion: No

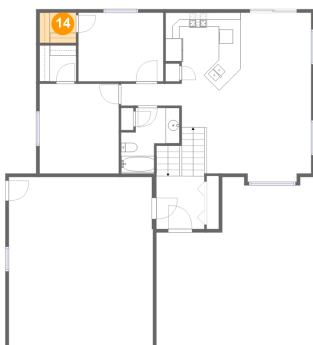
13 Floor 2 - Bedroom



Dimensions: 12'2" x 9'10"
Area: 120 sq. ft
Counted as living area: Yes

Heated: Yes
Finished: Yes
Enclosed: Yes
Contiguous: Yes
Permitted: Yes
Wet space: No
Addition: No
Conversion: No

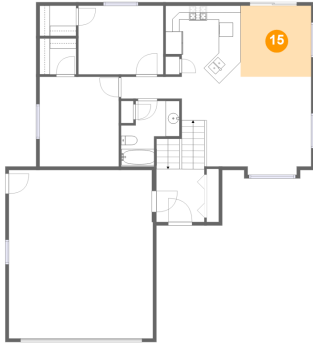
14 Floor 2 - W.I.C.



Dimensions: 5'3" x 4'4"
Area: 23 sq. ft
Counted as living area: Yes

Heated: Yes
Finished: Yes
Enclosed: Yes
Contiguous: Yes
Permitted: Yes
Wet space: No
Addition: No
Conversion: No

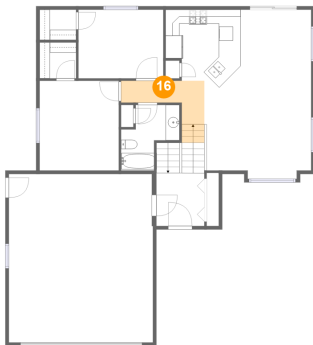
15 Floor 2 - Dining Area



Dimensions: 10'2" x 10'2"
Area: 104 sq. ft
Counted as living area: Yes

Heated: Yes
Finished: Yes
Enclosed: Yes
Contiguous: Yes
Permitted: Yes
Wet space: No
Addition: No
Conversion: No

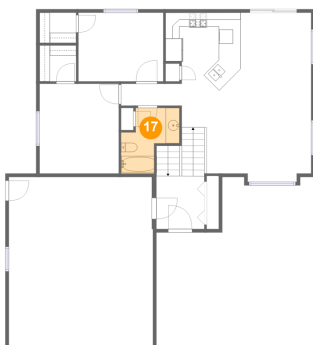
16 Floor 2 - Hall



Dimensions: 12'0" x 6'3"
Area: 56 sq. ft
Counted as living area: Yes

Heated: Yes
Finished: Yes
Enclosed: Yes
Contiguous: Yes
Permitted: Yes
Wet space: No
Addition: No
Conversion: No

17 Floor 2 - Bath



Dimensions: 8'5" x 9'5"
Area: 56 sq. ft
Counted as living area: Yes

Heated: Yes
Finished: Yes
Enclosed: Yes
Contiguous: Yes
Permitted: Yes
Wet space: Yes
Addition: No
Conversion: No