

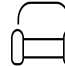
46 Greenwood Road, Hopkinton Highlands, Hopkinton, Middlesex County, Massachusetts,



Property Summary

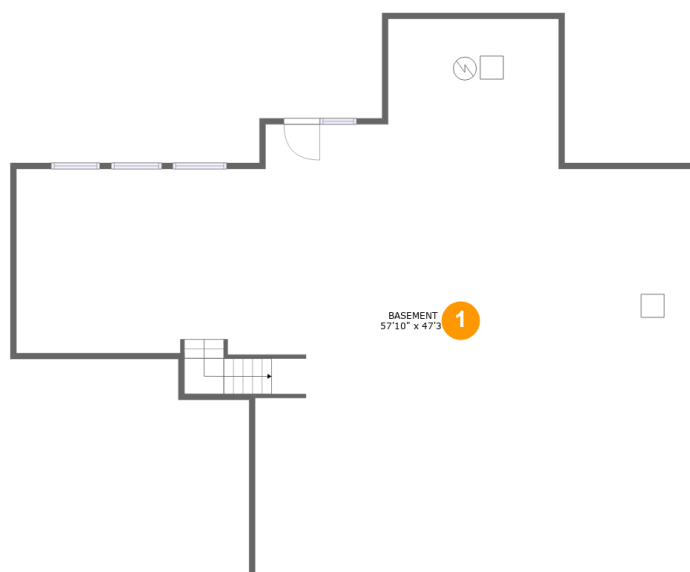
 **0** garages  **4** bedrooms  **3** bathrooms  **1** half baths

 **3** floors

 **3,927** Gross Living Area sqft

 **6,202** total sqft

46 Greenwood Road, Hopkinton Highlands, Hopkinton, Middlesex County, Massachusetts,



Room Dimensions

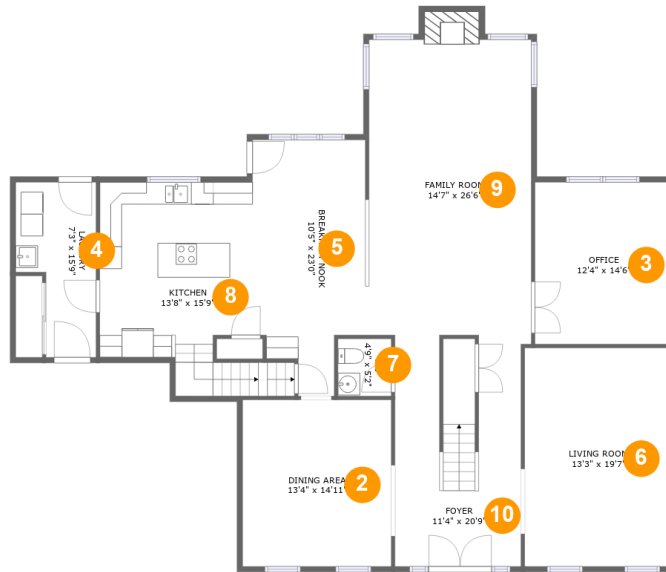
Floor 1

Total sqft: 1964

Living area: 0

#	Room name	Dimensions	Area (sqft)	Counted as Living Area
1	Basement	57'10" x 47'3"	1856 sq. ft	No

46 Greenwood Road, Hopkinton Highlands, Hopkinton, Middlesex County, Massachusetts,



Room Dimensions

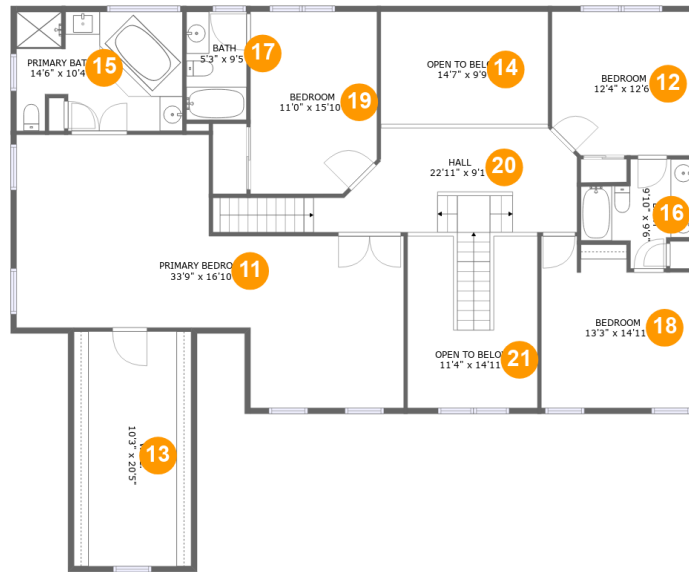
Floor 2

Total sqft: 2020

Living area: 2005

#	Room name	Dimensions	Area (sqft)	Counted as Living Area
2	Dining Area	13'4" x 14'11"	200 sq. ft	Yes
3	Office	12'4" x 14'6"	179 sq. ft	Yes
4	Laundry	7'3" x 15'9"	93 sq. ft	Yes
5	Breakfast Nook	10'5" x 23'0"	205 sq. ft	Yes
6	Living Room	13'3" x 19'7"	260 sq. ft	Yes
7	Wc	4'9" x 5'2"	25 sq. ft	Yes
8	Kitchen	13'8" x 15'9"	242 sq. ft	Yes
9	Family Room	14'7" x 26'6"	399 sq. ft	Yes
10	Foyer	11'4" x 20'9"	206 sq. ft	Yes

46 Greenwood Road, Hopkinton Highlands, Hopkinton, Middlesex County, Massachusetts,



Room Dimensions

Floor 3

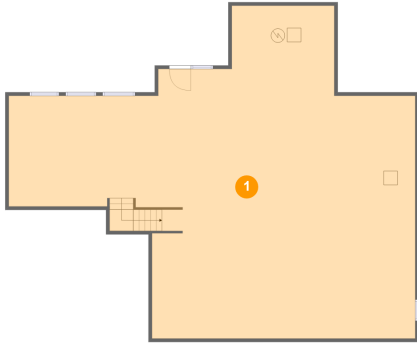
Total sqft: 2218

Living area: 1922

#	Room name	Dimensions	Area (sqft)	Counted as Living Area
11	Primary Bedroom	33'9" x 16'10"	510 sq. ft	Yes
12	Bedroom	12'4" x 12'6"	151 sq. ft	Yes
13	W.i.c.	10'3" x 20'5"	209 sq. ft	Yes
14	Open To Below	14'7" x 9'9"	143 sq. ft	No
15	Primary Bath	14'6" x 10'4"	142 sq. ft	Yes
16	Bath	9'10" x 9'6"	66 sq. ft	Yes
17	Bath	5'3" x 9'5"	49 sq. ft	Yes
18	Bedroom	13'3" x 14'11"	176 sq. ft	Yes
19	Bedroom	11'0" x 15'10"	170 sq. ft	Yes
20	Hall	22'11" x 9'1"	239 sq. ft	Yes
21	Open To Below	11'4" x 14'11"	140 sq. ft	No

46 Greenwood Road, Hopkinton Highlands, Hopkinton, Middlesex County, Massachusetts,

1 Floor 1 - Basement



Dimensions: 57'10" x 47'3"
Area: 1856 sq. ft
Counted as Living Area: No

Heated: No
Finished: Yes
Enclosed: Yes
Contiguous: Yes
Permitted: Yes
Wet Space: No
Addition: No
Conversion: No

2 Floor 2 - Dining Area



Dimensions: 13'4" x 14'11"
Area: 200 sq. ft
Counted as Living Area:
Yes

Heated: Yes
Finished: Yes
Enclosed: Yes
Contiguous:
Yes
Permitted: Yes
Wet Space: No
Addition: No
Conversion: No

46 Greenwood Road, Hopkinton Highlands, Hopkinton, Middlesex County, Massachusetts,

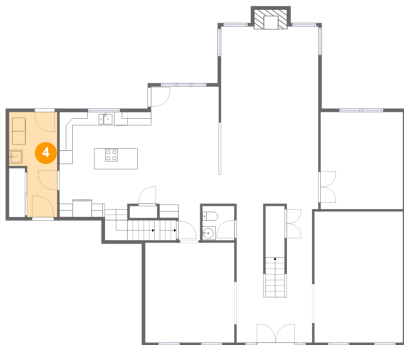
3 Floor 2 - Office



Dimensions: 12'4" x 14'6"
Area: 179 sq. ft
Counted as Living Area:
Yes

Heated: Yes
Finished: Yes
Enclosed: Yes
Contiguous:
Yes
Permitted: Yes
Wet Space: No
Addition: No
Conversion: No

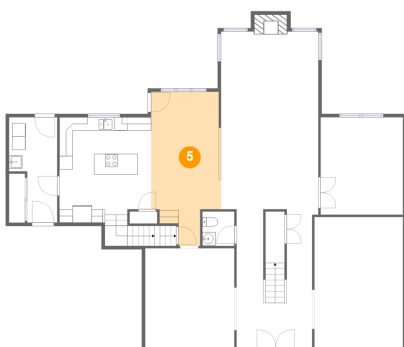
4 Floor 2 - Laundry



Dimensions: 7'3" x 15'9"
Area: 93 sq. ft
Counted as Living Area:
Yes

Heated: Yes
Finished: Yes
Enclosed: Yes
Contiguous:
Yes
Permitted: Yes
Wet Space: No
Addition: No
Conversion: No

5 Floor 2 - Breakfast Nook



Dimensions: 10'5" x 23'0"
Area: 205 sq. ft
Counted as Living Area:
Yes

Heated: Yes
Finished: Yes
Enclosed: Yes
Contiguous:
Yes
Permitted: Yes
Wet Space: No
Addition: No
Conversion: No

46 Greenwood Road, Hopkinton Highlands, Hopkinton, Middlesex County, Massachusetts,

6 Floor 2 - Living Room



Dimensions: 13'3" x 19'7"
Area: 260 sq. ft
Counted as Living Area:
Yes

Heated: Yes
Finished: Yes
Enclosed: Yes
Contiguous:
Yes
Permitted: Yes
Wet Space: No
Addition: No
Conversion: No

7 Floor 2 - Wc



Dimensions: 4'9" x 5'2"
Area: 25 sq. ft
Counted as Living Area:
Yes

Heated: Yes
Finished: Yes
Enclosed: Yes
Contiguous:
Yes
Permitted: Yes
Wet Space: Yes
Addition: No
Conversion: No

8 Floor 2 - Kitchen

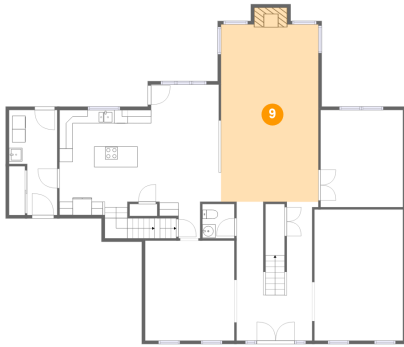


Dimensions: 13'8" x 15'9"
Area: 242 sq. ft
Counted as Living Area:
Yes

Heated: Yes
Finished: Yes
Enclosed: Yes
Contiguous:
Yes
Permitted: Yes
Wet Space: No
Addition: No
Conversion: No

46 Greenwood Road, Hopkinton Highlands, Hopkinton, Middlesex County, Massachusetts,

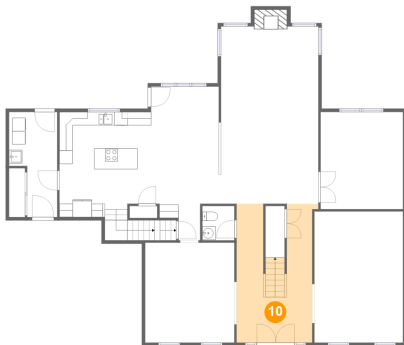
9 Floor 2 - Family Room



Dimensions: 14'7" x 26'6"
Area: 399 sq. ft
Counted as Living Area:
Yes

Heated: Yes
Finished: Yes
Enclosed: Yes
Contiguous:
Yes
Permitted: Yes
Wet Space: No
Addition: No
Conversion: No

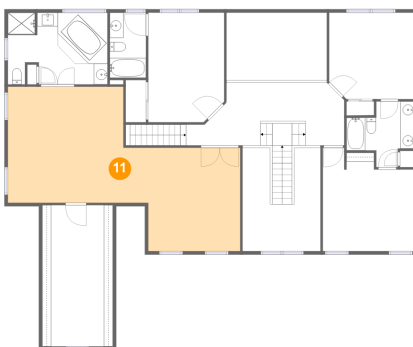
10 Floor 2 - Foyer



Dimensions: 11'4" x 20'9"
Area: 206 sq. ft
Counted as Living Area:
Yes

Heated: Yes
Finished: Yes
Enclosed: Yes
Contiguous:
Yes
Permitted: Yes
Wet Space: No
Addition: No
Conversion: No

11 Floor 3 - Primary Bedroom



Dimensions: 33'9" x 16'10"
Area: 510 sq. ft
Counted as Living Area:
Yes

Heated: Yes
Finished: Yes
Enclosed: Yes
Contiguous:
Yes
Permitted: Yes
Wet Space: No
Addition: No
Conversion: No

46 Greenwood Road, Hopkinton Highlands, Hopkinton, Middlesex County, Massachusetts,

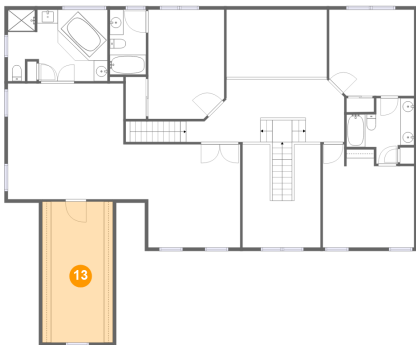
12 Floor 3 - Bedroom



Dimensions: 12'4" x 12'6"
Area: 151 sq. ft
Counted as Living Area:
Yes

Heated: Yes
Finished: Yes
Enclosed: Yes
Contiguous:
Yes
Permitted: Yes
Wet Space: No
Addition: No
Conversion: No

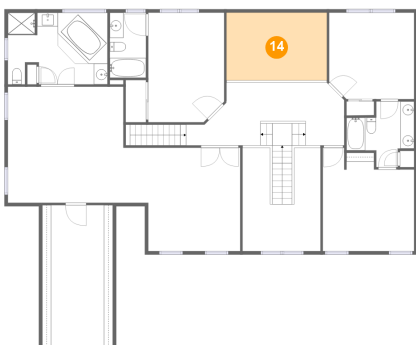
13 Floor 3 - W.i.c.



Dimensions: 10'3" x 20'5"
Area: 209 sq. ft
Counted as Living Area:
Yes

Heated: Yes
Finished: Yes
Enclosed: Yes
Contiguous:
Yes
Permitted: Yes
Wet Space: No
Addition: No
Conversion: No

14 Floor 3 - Open To Below

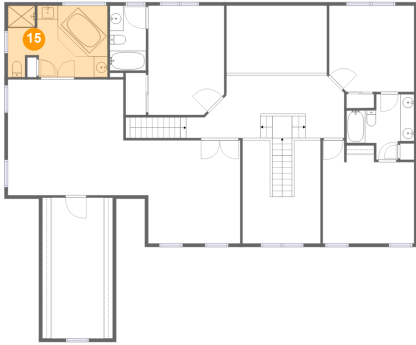


Dimensions: 14'7" x 9'9"
Area: 143 sq. ft
Counted as Living Area: No

Heated: No
Finished: No
Enclosed: No
Contiguous: Yes
Permitted: No
Wet Space: No
Addition: No
Conversion: No

46 Greenwood Road, Hopkinton Highlands, Hopkinton, Middlesex County, Massachusetts,

15 Floor 3 - Primary Bath



Dimensions: 14'6" x 10'4"
Area: 142 sq. ft
Counted as Living Area:
Yes

Heated: Yes
Finished: Yes
Enclosed: Yes
Contiguous:
Yes
Permitted: Yes
Wet Space: Yes
Addition: No
Conversion: No

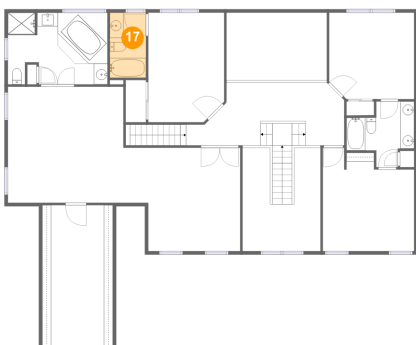
16 Floor 3 - Bath



Dimensions: 9'10" x 9'6"
Area: 66 sq. ft
Counted as Living Area:
Yes

Heated: Yes
Finished: Yes
Enclosed: Yes
Contiguous:
Yes
Permitted: Yes
Wet Space: Yes
Addition: No
Conversion: No

17 Floor 3 - Bath



Dimensions: 5'3" x 9'5"
Area: 49 sq. ft
Counted as Living Area:
Yes

Heated: Yes
Finished: Yes
Enclosed: Yes
Contiguous:
Yes
Permitted: Yes
Wet Space: Yes
Addition: No
Conversion: No

46 Greenwood Road, Hopkinton Highlands, Hopkinton, Middlesex County, Massachusetts,

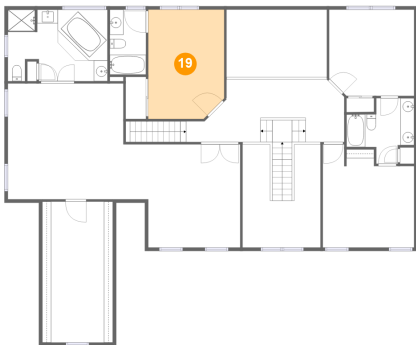
18 Floor 3 - Bedroom



Dimensions: 13'3" x 14'11"
Area: 176 sq. ft
Counted as Living Area:
Yes

Heated: Yes
Finished: Yes
Enclosed: Yes
Contiguous:
Yes
Permitted: Yes
Wet Space: No
Addition: No
Conversion: No

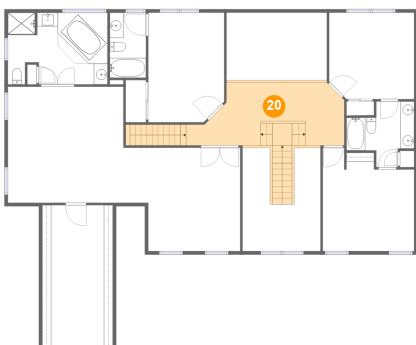
19 Floor 3 - Bedroom



Dimensions: 11'0" x 15'10"
Area: 170 sq. ft
Counted as Living Area:
Yes

Heated: Yes
Finished: Yes
Enclosed: Yes
Contiguous:
Yes
Permitted: Yes
Wet Space: No
Addition: No
Conversion: No

20 Floor 3 - Hall

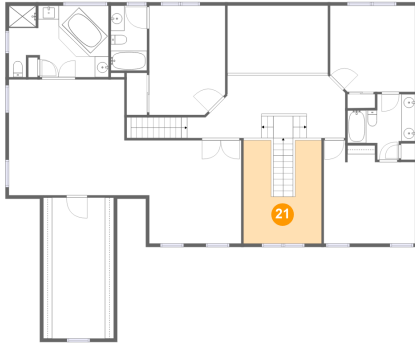


Dimensions: 22'11" x 9'1"
Area: 239 sq. ft
Counted as Living Area:
Yes

Heated: Yes
Finished: Yes
Enclosed: Yes
Contiguous:
Yes
Permitted: Yes
Wet Space: No
Addition: No
Conversion: No

46 Greenwood Road, Hopkinton Highlands, Hopkinton, Middlesex County, Massachusetts,

21 Floor 3 - Open To Below



Dimensions: 11'4" x 14'11"
Area: 140 sq. ft
Counted as Living Area: No

Heated: No
Finished: No
Enclosed: No
Contiguous: Yes
Permitted: No
Wet Space: No
Addition: No
Conversion: No