

Home data report

183 N 2925 W,West Point,UT,US



Total Area: 2501 sq. ft

Below Ground: 1131 sq. ft, 1st Floor: 1370 sq. ft

Excluded: Utility 126 sq. ft, Garage 631 sq. ft, Fireplace 9 sq. ft, Walls: 205 sq. ft

Property summary

 **2** Floors

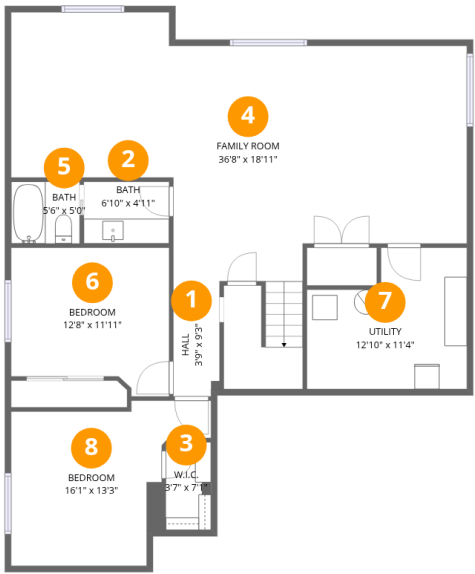
 **5** Bedrooms

 **3** Bathrooms

 **1** Garages

Home data report

183 N 2925 W,West Point,UT,US



Room dimensions

Floor 1 Below grade Total:1131sqft Excluded: 126sqft

#		Dimensions	sqft	Counted as living area
1	Hall	3'9" x 9'3"	34 sq. ft	Yes
2	Bath	6'10" x 4'11"	34 sq. ft	Yes
3	W.I.C.	3'7" x 7'1"	30 sq. ft	Yes
4	Family Room	36'8" x 18'11"	631 sq. ft	Yes
5	Bath	5'6" x 5'0"	27 sq. ft	Yes
6	Bedroom	12'8" x 11'11"	137 sq. ft	Yes
7	Utility	12'10" x 11'4"	126 sq. ft	No
8	Bedroom	16'1" x 13'3"	156 sq. ft	Yes

Home data report

183 N 2925 W,West Point,UT,US



Room dimensions

Floor 2 Total:1370sqft Excluded: 640sqft

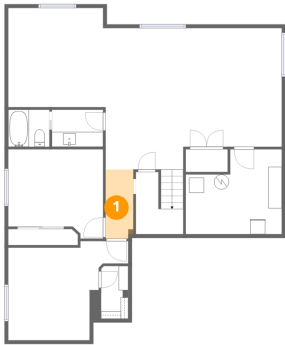
#		Dimensions	sqft	Counted as living area
9	Garage	32'0" x 20'0"	631 sq. ft	No
10	Primary Bedroom	16'1" x 11'7"	178 sq. ft	Yes
11	Bedroom	10'4" x 9'11"	102 sq. ft	Yes
12	Foyer	7'0" x 13'5"	71 sq. ft	Yes
13	Dining Area	12'3" x 9'6"	113 sq. ft	Yes
14	Bath	9'1" x 5'0"	45 sq. ft	Yes
15	Bedroom	12'5" x 9'10"	105 sq. ft	Yes
16	Primary Bath	8'7" x 7'10"	67 sq. ft	Yes
17	W.I.C.	5'5" x 7'10"	42 sq. ft	Yes
18	Living Room	18'4" x 22'1"	362 sq. ft	Yes
19	Kitchen	10'6" x 12'2"	119 sq. ft	Yes

Home data report

183 N 2925 W,West Point,UT,US

#		Dimensions	sqft	Counted as living area
20	Hall	4'4" x 8'10"	36 sq. ft	Yes
21	Laundry	8'11" x 6'5"	49 sq. ft	Yes

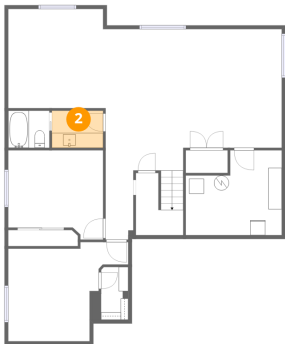
1 Floor 1 - Hall



Dimensions: 3'9" x 9'3"
Area: 34 sq. ft
Counted as living area: Yes

Heated: Yes
Finished: Yes
Enclosed: Yes
Contiguous: Yes
Permitted: Yes
Wet space: No
Addition: No
Conversion: No

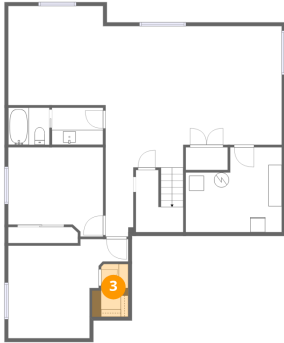
2 Floor 1 - Bath



Dimensions: 6'10" x 4'11"
Area: 34 sq. ft
Counted as living area: Yes

Heated: Yes
Finished: Yes
Enclosed: Yes
Contiguous: Yes
Permitted: Yes
Wet space: Yes
Addition: No
Conversion: No

3 Floor 1 - W.I.C.



Dimensions: 3'7" x 7'1"
Area: 30 sq. ft
Counted as living area: Yes

Heated: Yes
Finished: Yes
Enclosed: Yes
Contiguous: Yes
Permitted: Yes
Wet space: No
Addition: No
Conversion: No

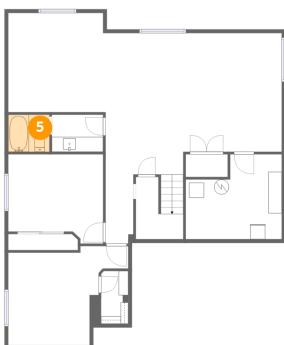
4 Floor 1 - Family Room



Dimensions: 36'8" x 18'11"
Area: 631 sq. ft
Counted as living area: Yes

Heated: Yes
Finished: Yes
Enclosed: Yes
Contiguous: Yes
Permitted: Yes
Wet space: No
Addition: No
Conversion: No

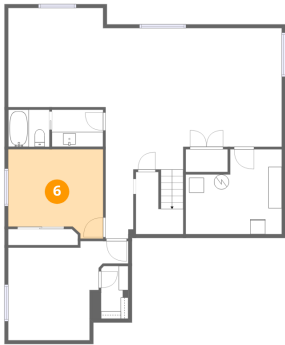
5 Floor 1 - Bath



Dimensions: 5'6" x 5'0"
Area: 27 sq. ft
Counted as living area: Yes

Heated: Yes
Finished: Yes
Enclosed: Yes
Contiguous: Yes
Permitted: Yes
Wet space: Yes
Addition: No
Conversion: No

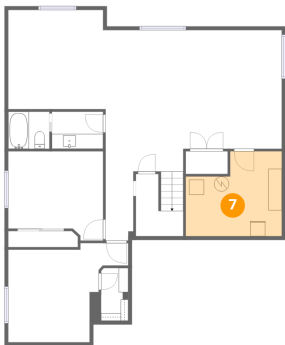
6 Floor 1 - Bedroom



Dimensions: 12'8" x 11'11"
Area: 137 sq. ft
Counted as living area: Yes

Heated: Yes
Finished: Yes
Enclosed: Yes
Contiguous: Yes
Permitted: Yes
Wet space: No
Addition: No
Conversion: No

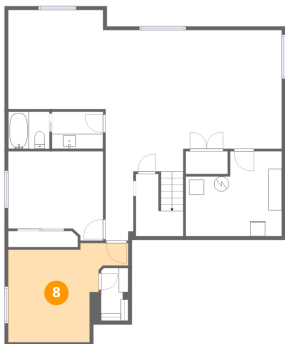
7 Floor 1 - Utility



Dimensions: 12'10" x 11'4"
Area: 126 sq. ft
Counted as living area: No

Heated: Yes
Finished: No
Enclosed: Yes
Contiguous: Yes
Permitted: Yes
Wet space: No
Addition: No
Conversion: No

8 Floor 1 - Bedroom



Dimensions: 16'1" x 13'3"
Area: 156 sq. ft
Counted as living area: Yes

Heated: Yes
Finished: Yes
Enclosed: Yes
Contiguous: Yes
Permitted: Yes
Wet space: No
Addition: No
Conversion: No

9 Floor 2 - Garage



Dimensions: 32'0" x 20'0"
Area: 631 sq. ft
Counted as living area: No

Heated: No
Finished: No
Enclosed: Yes
Contiguous: Yes
Permitted: Yes
Wet space: No
Addition: No
Conversion: No

10 Floor 2 - Primary Bedroom



Dimensions: 16'1" x 11'7"
Area: 178 sq. ft
Counted as living area: Yes

Heated: Yes
Finished: Yes
Enclosed: Yes
Contiguous: Yes
Permitted: Yes
Wet space: No
Addition: No
Conversion: No

11 Floor 2 - Bedroom



Dimensions: 10'4" x 9'11"
Area: 102 sq. ft
Counted as living area: Yes

Heated: Yes
Finished: Yes
Enclosed: Yes
Contiguous: Yes
Permitted: Yes
Wet space: No
Addition: No
Conversion: No

12 Floor 2 - Foyer



Dimensions: 7'0" x 13'5"
Area: 71 sq. ft
Counted as living area: Yes

Heated: Yes
Finished: Yes
Enclosed: Yes
Contiguous: Yes
Permitted: Yes
Wet space: No
Addition: No
Conversion: No

13 Floor 2 - Dining Area



Dimensions: 12'3" x 9'6"
Area: 113 sq. ft
Counted as living area: Yes

Heated: Yes
Finished: Yes
Enclosed: Yes
Contiguous: Yes
Permitted: Yes
Wet space: No
Addition: No
Conversion: No

14 Floor 2 - Bath



Dimensions: 9'1" x 5'0"
Area: 45 sq. ft
Counted as living area: Yes

Heated: Yes
Finished: Yes
Enclosed: Yes
Contiguous: Yes
Permitted: Yes
Wet space: Yes
Addition: No
Conversion: No

15 Floor 2 - Bedroom



Dimensions: 12'5" x 9'10"
Area: 105 sq. ft
Counted as living area: Yes

Heated: Yes
Finished: Yes
Enclosed: Yes
Contiguous: Yes
Permitted: Yes
Wet space: No
Addition: No
Conversion: No

16 Floor 2 - Primary Bath



Dimensions: 8'7" x 7'10"
Area: 67 sq. ft
Counted as living area: Yes

Heated: Yes
Finished: Yes
Enclosed: Yes
Contiguous: Yes
Permitted: Yes
Wet space: Yes
Addition: No
Conversion: No

17 Floor 2 - W.I.C.



Dimensions: 5'5" x 7'10"
Area: 42 sq. ft
Counted as living area: Yes

Heated: Yes
Finished: Yes
Enclosed: Yes
Contiguous: Yes
Permitted: Yes
Wet space: No
Addition: No
Conversion: No

18 Floor 2 - Living Room



Dimensions: 18'4" x 22'1"
Area: 362 sq. ft
Counted as living area: Yes

Heated: Yes
Finished: Yes
Enclosed: Yes
Contiguous: Yes
Permitted: Yes
Wet space: No
Addition: No
Conversion: No

19 Floor 2 - Kitchen



Dimensions: 10'6" x 12'2"
Area: 119 sq. ft
Counted as living area: Yes

Heated: Yes
Finished: Yes
Enclosed: Yes
Contiguous: Yes
Permitted: Yes
Wet space: No
Addition: No
Conversion: No

20 Floor 2 - Hall



Dimensions: 4'4" x 8'10"
Area: 36 sq. ft
Counted as living area: Yes

Heated: Yes
Finished: Yes
Enclosed: Yes
Contiguous: Yes
Permitted: Yes
Wet space: No
Addition: No
Conversion: No

21 Floor 2 - Laundry



Dimensions: 8'11" x 6'5"

Area: 49 sq. ft

Counted as living area: Yes

Heated: Yes

Finished: Yes

Enclosed: Yes

Contiguous: Yes

Permitted: Yes

Wet space: No

Addition: No

Conversion: No