



Lisa Lembeck

125 E SAPPHIRE LN | 99208

\$715,000

BEDROOMS 4

BATHROOMS 3

OF STORIES 1



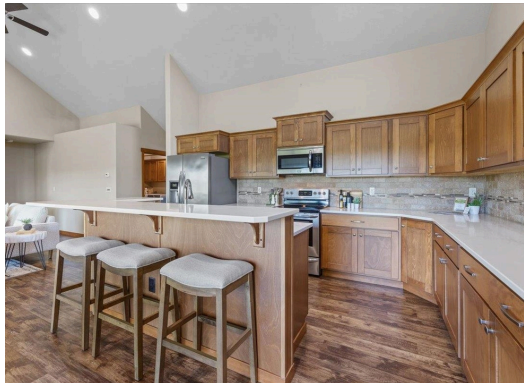
TOTAL SQ FT 2,754

GARAGE CAR SIZE 2

LOT SIZE: 10,178 SQFT

PROPERTY OVERVIEW

No-step entry, custom designed craftsman in gated Wandermere Heights! Well appointed features set this home apart from the rest; custom media wall and fireplace are the focal point of the great room. Vaulted ceilings with wall to wall windows bring in the daylight and the incredible views! Covered deck. Kitchen with lots of counter space and upgraded cabinetry. Built-in desk area and pantry. Main floor living with the primary suite and laundry. Huge walk-in closet in primary bedroom. 2nd bedroom or den and full bath off the entry. Finished, daylight walkout basement with large rec room, 2 bedrooms and a full bathroom. Lots of storage space! The garage is oversized to house a nice workshop or neatly store the kayaks and golf clubs. Low maintenance yard with sprinklers to keep the plants and grass green. Enjoy recreation nearby with 2 golf courses, 2 ski mountains and lakes. Convenient to Mead Schools, shopping, restaurants and a movie theater. There is nothing left to do on this home but move in and enjoy!



509.220.7482



LISAL@WINDERMERE.COM

SCAN FOR TOUR

