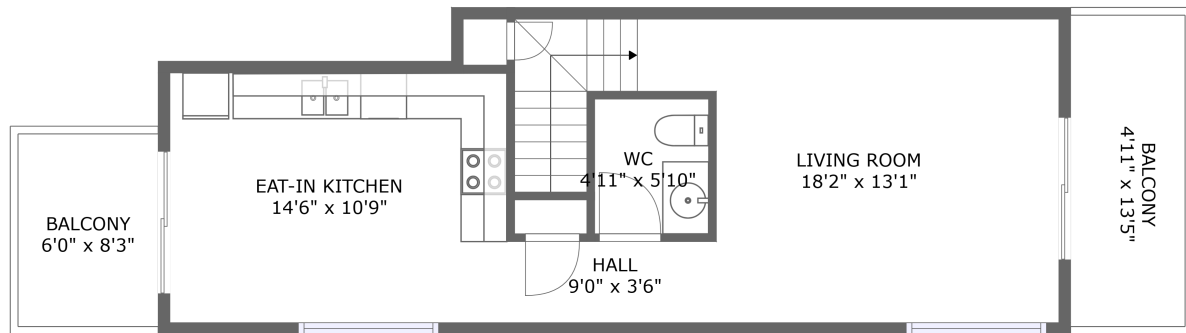
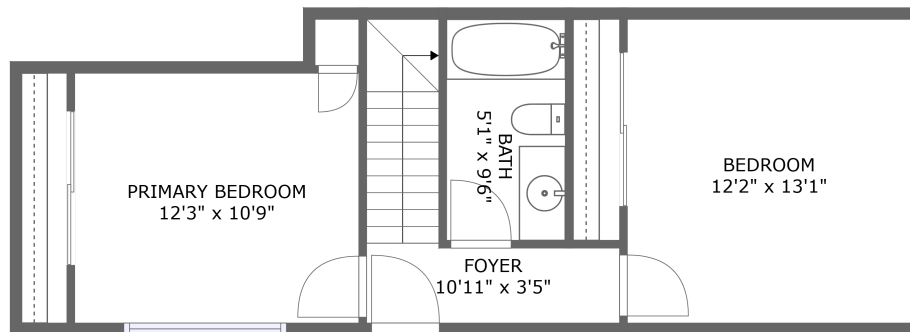


2605 Solano Road, Pismo Beach, California 93449, United States, Unit A



FLOOR 2




FLOOR 1

Property summary


 **0** Garages

 **2** Bedrooms

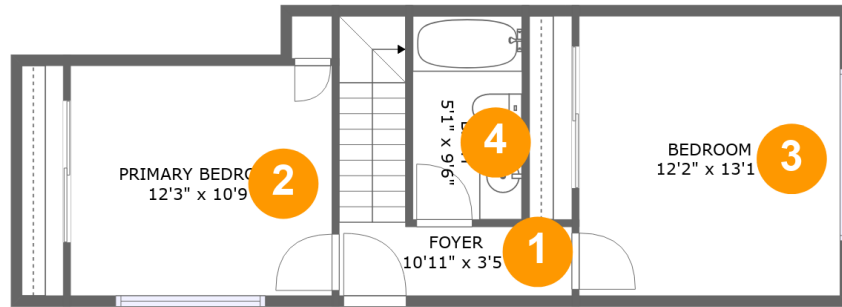
 **1** Bathrooms

 **1** Half baths

 **2** Floors

 **942** Gross living area sqft

 **1,058** Total sqft

**2605 Solano Road, Pismo Beach, California 93449,
United States, Unit A****Room dimensions**

Floor 1

Total sqft: 472 Living area: 472

#		Dimensions	sqft	Counted as living area
1	Foyer	10'11" x 3'5"	66 sq. ft	Yes
2	Primary Bedroom	12'3" x 10'9"	131 sq. ft	Yes
3	Bedroom	12'2" x 13'1"	159 sq. ft	Yes
4	Bath	5'1" x 9'6"	49 sq. ft	Yes

2605 Solano Road, Pismo Beach, California 93449, United States, Unit A



Room dimensions

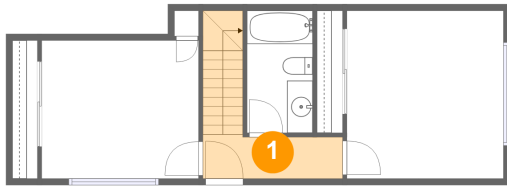
Floor 2

Total sqft: 586 Living area: 470

#		Dimensions	sqft	Counted as living area
5	Hall	9'0" x 3'6"	32 sq. ft	Yes
6	Balcony	4'11" x 13'5"	66 sq. ft	No
7	WC	4'11" x 5'10"	28 sq. ft	Yes
8	Living Room	18'2" x 13'1"	233 sq. ft	Yes
9	Eat-in Kitchen	14'6" x 10'9"	156 sq. ft	Yes
10	Balcony	6'0" x 8'3"	50 sq. ft	No

2605 Solano Road, Pismo Beach, California 93449, United States, Unit A

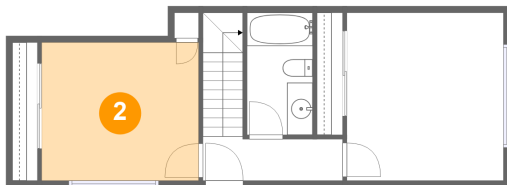
1 Floor 1 - Foyer



Dimensions: 10'11" x 3'5"
Area: 66 sq. ft
Counted as living area: Yes

Heated: Yes
Finished: Yes
Enclosed: Yes
Contiguous: Yes
Permitted: Yes
Wet space: No
Addition: No
Conversion: No

2 Floor 1 - Primary Bedroom

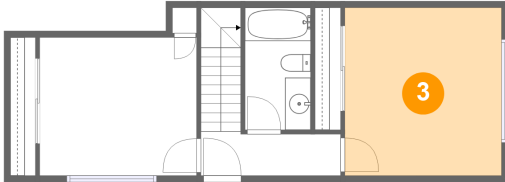


Dimensions: 12'3" x 10'9"
Area: 131 sq. ft
Counted as living area: Yes

Heated: Yes
Finished: Yes
Enclosed: Yes
Contiguous: Yes
Permitted: Yes
Wet space: No
Addition: No
Conversion: No

2605 Solano Road, Pismo Beach, California 93449,
United States, Unit A

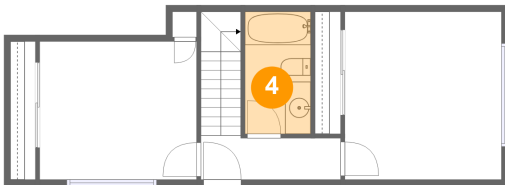
3 Floor 1 - Bedroom



Dimensions: 12'2" x 13'1"
Area: 159 sq. ft
Counted as living area: Yes

Heated: Yes
Finished: Yes
Enclosed: Yes
Contiguous: Yes
Permitted: Yes
Wet space: No
Addition: No
Conversion: No

4 Floor 1 - Bath



Dimensions: 5'1" x 9'6"
Area: 49 sq. ft
Counted as living area: Yes

Heated: Yes
Finished: Yes
Enclosed: Yes
Contiguous: Yes
Permitted: Yes
Wet space: Yes
Addition: No
Conversion: No

5 Floor 2 - Hall

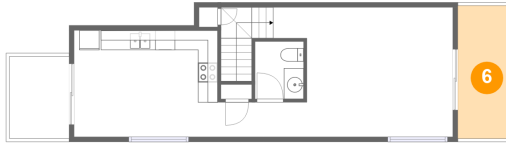


Dimensions: 9'0" x 3'6"
Area: 32 sq. ft
Counted as living area: Yes

Heated: Yes
Finished: Yes
Enclosed: Yes
Contiguous: Yes
Permitted: Yes
Wet space: No
Addition: No
Conversion: No

2605 Solano Road, Pismo Beach, California 93449, United States, Unit A

6 Floor 2 - Balcony



Dimensions: 4'11" x 13'5"
Area: 66 sq. ft
Counted as living area: No

Heated: No
Finished: Yes
Enclosed: No
Contiguous: Yes
Permitted: Yes
Wet space: No
Addition: No
Conversion: No

7 Floor 2 - WC



Dimensions: 4'11" x 5'10"
Area: 28 sq. ft
Counted as living area: Yes

Heated: Yes
Finished: Yes
Enclosed: Yes
Contiguous: Yes
Permitted: Yes
Wet space: Yes
Addition: No
Conversion: No

8 Floor 2 - Living Room

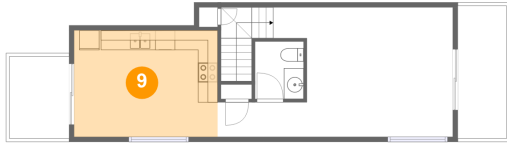


Dimensions: 18'2" x 13'1"
Area: 233 sq. ft
Counted as living area: Yes

Heated: Yes
Finished: Yes
Enclosed: Yes
Contiguous: Yes
Permitted: Yes
Wet space: No
Addition: No
Conversion: No

2605 Solano Road, Pismo Beach, California 93449, United States, Unit A

9 Floor 2 - Eat-in Kitchen



Dimensions: 14'6" x 10'9"
Area: 156 sq. ft
Counted as living area: Yes

Heated: Yes
Finished: Yes
Enclosed: Yes
Contiguous: Yes
Permitted: Yes
Wet space: No
Addition: No
Conversion: No

10 Floor 2 - Balcony



Dimensions: 6'0" x 8'3"
Area: 50 sq. ft
Counted as living area: No

Heated: No
Finished: Yes
Enclosed: No
Contiguous: Yes
Permitted: Yes
Wet space: No
Addition: No
Conversion: No