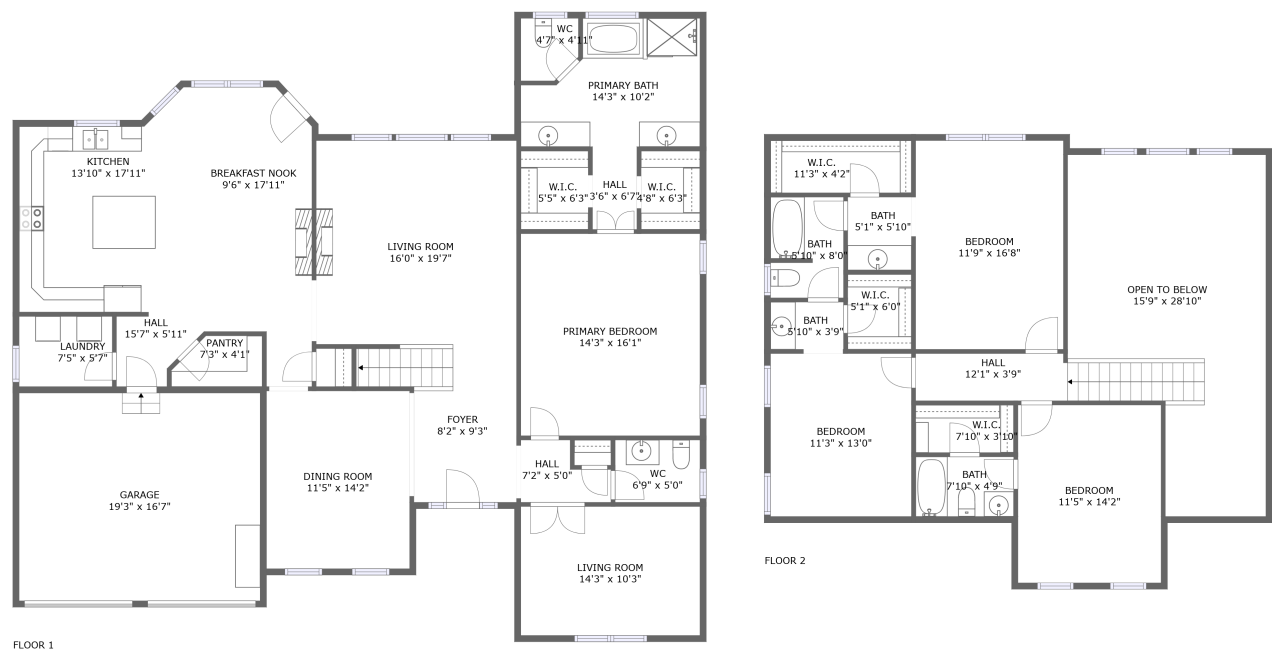




Home report


214 Crestmont Way,Canton,GA,US





Property summary


 **1** Garages


 **4** Bedrooms

 **3** Bathrooms

 **1** Half baths

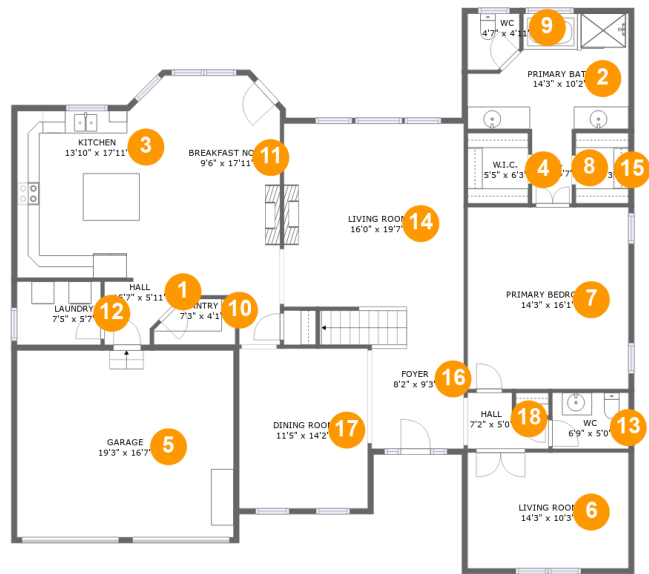
 **2** Floors

 **2,831** Gross living area sqft

 **3,542** Total sqft

Home report

214 Crestmont Way,Canton,GA,US



Room dimensions

Floor 1 Total sqft: 2242 Living area: 1904

#		Dimensions	sqft	Counted as living area
1	Hall	15'7" x 5'11"	61 sq. ft	Yes
2	Primary Bath	14'3" x 10'2"	122 sq. ft	Yes
3	Kitchen	13'10" x 17'11"	212 sq. ft	Yes
4	W.I.C.	5'5" x 6'3"	34 sq. ft	Yes
5	Garage	19'3" x 16'7"	318 sq. ft	No
6	Living Room	14'3" x 10'3"	147 sq. ft	Yes
7	Primary Bedroom	14'3" x 16'1"	230 sq. ft	Yes
8	Hall	3'6" x 6'7"	23 sq. ft	Yes
9	WC	4'7" x 4'11"	21 sq. ft	Yes
10	Pantry	7'3" x 4'1"	26 sq. ft	Yes
11	Breakfast Nook	9'6" x 17'11"	166 sq. ft	Yes

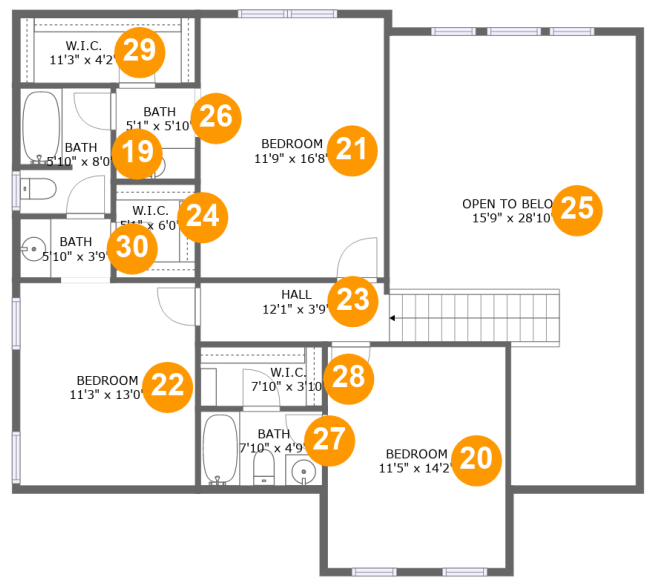
Home report

214 Crestmont Way,Canton,GA,US

#		Dimensions	sqft	Counted as living area
12	Laundry	7'5" x 5'7"	42 sq. ft	Yes
13	WC	6'9" x 5'0"	34 sq. ft	Yes
14	Living Room	16'0" x 19'7"	301 sq. ft	Yes
15	W.I.C.	4'8" x 6'3"	29 sq. ft	Yes
16	Foyer	8'2" x 9'3"	75 sq. ft	Yes
17	Dining Room	11'5" x 14'2"	162 sq. ft	Yes
18	Hall	7'2" x 5'0"	28 sq. ft	Yes

Home report

214 Crestmont Way,Canton,GA,US



Room dimensions

Floor 2 Total sqft: 1300 Living area: 927

#		Dimensions	sqft	Counted as living area
19	Bath	5'10" x 8'0"	46 sq. ft	Yes
20	Bedroom	11'5" x 14'2"	162 sq. ft	Yes
21	Bedroom	11'9" x 16'8"	196 sq. ft	Yes
22	Bedroom	11'3" x 13'0"	146 sq. ft	Yes
23	Hall	12'1" x 3'9"	83 sq. ft	Yes
24	W.I.C.	5'1" x 6'0"	30 sq. ft	Yes
25	Open To Below	15'9" x 28'10"	346 sq. ft	No
26	Bath	5'1" x 5'10"	30 sq. ft	Yes
27	Bath	7'10" x 4'9"	37 sq. ft	Yes
28	W.I.C.	7'10" x 3'10"	30 sq. ft	Yes
29	W.I.C.	11'3" x 4'2"	47 sq. ft	Yes

Home report

214 Crestmont Way,Canton,GA,US

#		Dimensions	sqft	Counted as living area
30	Bath	5'10" x 3'9"	22 sq. ft	Yes

1 Floor 1 - Hall



Dimensions: 15'7" x 5'11"
Area: 61 sq. ft
Counted as living area: Yes

Heated: Yes
Finished: Yes
Enclosed: Yes
Contiguous: Yes
Permitted: Yes
Wet space: No
Addition: No
Conversion: No

2 Floor 1 - Primary Bath



Dimensions: 14'3" x 10'2"
Area: 122 sq. ft
Counted as living area: Yes

Heated: Yes
Finished: Yes
Enclosed: Yes
Contiguous: Yes
Permitted: Yes
Wet space: Yes
Addition: No
Conversion: No

3 Floor 1 - Kitchen



Dimensions: 13'10" x 17'11"
Area: 212 sq. ft
Counted as living area: Yes

Heated: Yes
Finished: Yes
Enclosed: Yes
Contiguous: Yes
Permitted: Yes
Wet space: No
Addition: No
Conversion: No

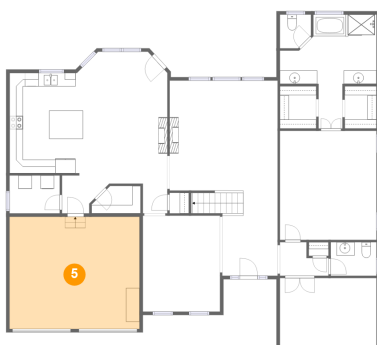
4 Floor 1 - W.I.C.



Dimensions: 5'5" x 6'3"
Area: 34 sq. ft
Counted as living area: Yes

Heated: Yes
Finished: Yes
Enclosed: Yes
Contiguous: Yes
Permitted: Yes
Wet space: No
Addition: No
Conversion: No

5 Floor 1 - Garage



Dimensions: 19'3" x 16'7"
Area: 318 sq. ft
Counted as living area: No

Heated: No
Finished: No
Enclosed: Yes
Contiguous: Yes
Permitted: Yes
Wet space: No
Addition: No
Conversion: No

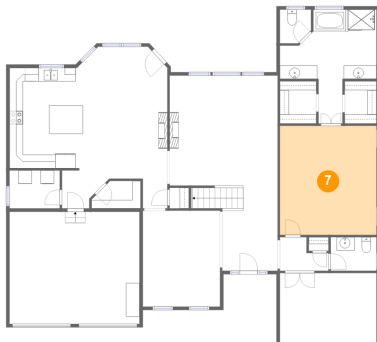
6 Floor 1 - Living Room



Dimensions: 14'3" x 10'3"
Area: 147 sq. ft
Counted as living area: Yes

Heated: Yes
Finished: Yes
Enclosed: Yes
Contiguous: Yes
Permitted: Yes
Wet space: No
Addition: No
Conversion: No

7 Floor 1 - Primary Bedroom



Dimensions: 14'3" x 16'1"
Area: 230 sq. ft
Counted as living area: Yes

Heated: Yes
Finished: Yes
Enclosed: Yes
Contiguous: Yes
Permitted: Yes
Wet space: No
Addition: No
Conversion: No

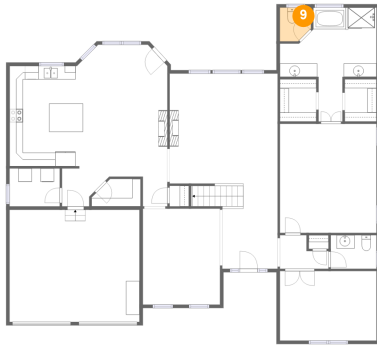
8 Floor 1 - Hall



Dimensions: 3'6" x 6'7"
Area: 23 sq. ft
Counted as living area: Yes

Heated: Yes
Finished: Yes
Enclosed: Yes
Contiguous: Yes
Permitted: Yes
Wet space: No
Addition: No
Conversion: No

9 Floor 1 - WC



Dimensions: 4'7" x 4'11"
Area: 21 sq. ft
Counted as living area: Yes

Heated: Yes
Finished: Yes
Enclosed: Yes
Contiguous: Yes
Permitted: Yes
Wet space: Yes
Addition: No
Conversion: No

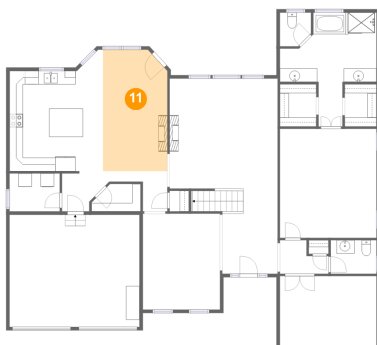
10 Floor 1 - Pantry



Dimensions: 7'3" x 4'1"
Area: 26 sq. ft
Counted as living area: Yes

Heated: Yes
Finished: Yes
Enclosed: Yes
Contiguous: Yes
Permitted: Yes
Wet space: No
Addition: No
Conversion: No

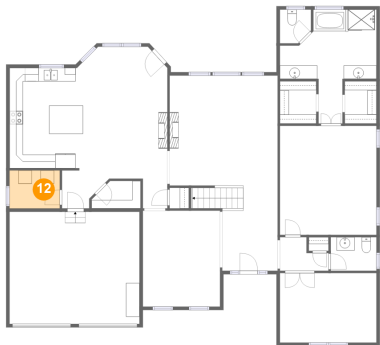
11 Floor 1 - Breakfast Nook



Dimensions: 9'6" x 17'11"
Area: 166 sq. ft
Counted as living area: Yes

Heated: Yes
Finished: Yes
Enclosed: Yes
Contiguous: Yes
Permitted: Yes
Wet space: No
Addition: No
Conversion: No

12 Floor 1 - Laundry



Dimensions: 7'5" x 5'7"
Area: 42 sq. ft
Counted as living area: Yes

Heated: Yes
Finished: Yes
Enclosed: Yes
Contiguous: Yes
Permitted: Yes
Wet space: No
Addition: No
Conversion: No

13 Floor 1 - WC



Dimensions: 6'9" x 5'0"
Area: 34 sq. ft
Counted as living area: Yes

Heated: Yes
Finished: Yes
Enclosed: Yes
Contiguous: Yes
Permitted: Yes
Wet space: Yes
Addition: No
Conversion: No

14 Floor 1 - Living Room



Dimensions: 16'0" x 19'7"
Area: 301 sq. ft
Counted as living area: Yes

Heated: Yes
Finished: Yes
Enclosed: Yes
Contiguous: Yes
Permitted: Yes
Wet space: No
Addition: No
Conversion: No

15 Floor 1 - W.I.C.



Dimensions: 4'8" x 6'3"
Area: 29 sq. ft
Counted as living area: Yes

Heated: Yes
Finished: Yes
Enclosed: Yes
Contiguous: Yes
Permitted: Yes
Wet space: No
Addition: No
Conversion: No

16 Floor 1 - Foyer



Dimensions: 8'2" x 9'3"
Area: 75 sq. ft
Counted as living area: Yes

Heated: Yes
Finished: Yes
Enclosed: Yes
Contiguous: Yes
Permitted: Yes
Wet space: No
Addition: No
Conversion: No

17 Floor 1 - Dining Room



Dimensions: 11'5" x 14'2"
Area: 162 sq. ft
Counted as living area: Yes

Heated: Yes
Finished: Yes
Enclosed: Yes
Contiguous: Yes
Permitted: Yes
Wet space: No
Addition: No
Conversion: No

18 Floor 1 - Hall



Dimensions: 7'2" x 5'0"
Area: 28 sq. ft
Counted as living area: Yes

Heated: Yes
Finished: Yes
Enclosed: Yes
Contiguous: Yes
Permitted: Yes
Wet space: No
Addition: No
Conversion: No

19 Floor 2 - Bath



Dimensions: 5'10" x 8'0"
Area: 46 sq. ft
Counted as living area: Yes

Heated: Yes
Finished: Yes
Enclosed: Yes
Contiguous: Yes
Permitted: Yes
Wet space: Yes
Addition: No
Conversion: No

20 Floor 2 - Bedroom



Dimensions: 11'5" x 14'2"
Area: 162 sq. ft
Counted as living area: Yes

Heated: Yes
Finished: Yes
Enclosed: Yes
Contiguous: Yes
Permitted: Yes
Wet space: No
Addition: No
Conversion: No

21 Floor 2 - Bedroom



Dimensions: 11'9" x 16'8"
Area: 196 sq. ft
Counted as living area: Yes

Heated: Yes
Finished: Yes
Enclosed: Yes
Contiguous: Yes
Permitted: Yes
Wet space: No
Addition: No
Conversion: No

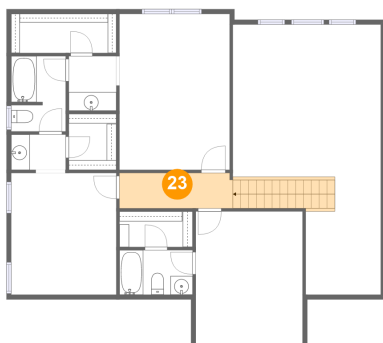
22 Floor 2 - Bedroom



Dimensions: 11'3" x 13'0"
Area: 146 sq. ft
Counted as living area: Yes

Heated: Yes
Finished: Yes
Enclosed: Yes
Contiguous: Yes
Permitted: Yes
Wet space: No
Addition: No
Conversion: No

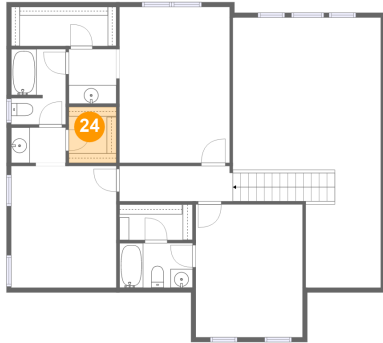
23 Floor 2 - Hall



Dimensions: 12'1" x 3'9"
Area: 83 sq. ft
Counted as living area: Yes

Heated: Yes
Finished: Yes
Enclosed: Yes
Contiguous: Yes
Permitted: Yes
Wet space: No
Addition: No
Conversion: No

24 Floor 2 - W.I.C.



Dimensions: 5'1" x 6'0"
Area: 30 sq. ft
Counted as living area: Yes

Heated: Yes
Finished: Yes
Enclosed: Yes
Contiguous: Yes
Permitted: Yes
Wet space: No
Addition: No
Conversion: No

25 Floor 2 - Open To Below



Dimensions: 15'9" x 28'10"
Area: 346 sq. ft
Counted as living area: No

Heated: No
Finished: No
Enclosed: No
Contiguous: Yes
Permitted: No
Wet space: No
Addition: No
Conversion: No

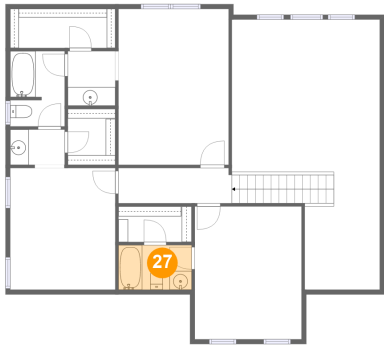
26 Floor 2 - Bath



Dimensions: 5'1" x 5'10"
Area: 30 sq. ft
Counted as living area: Yes

Heated: Yes
Finished: Yes
Enclosed: Yes
Contiguous: Yes
Permitted: Yes
Wet space: Yes
Addition: No
Conversion: No

27 Floor 2 - Bath



Dimensions: 7'10" x 4'9"
Area: 37 sq. ft
Counted as living area: Yes

Heated: Yes
Finished: Yes
Enclosed: Yes
Contiguous: Yes
Permitted: Yes
Wet space: Yes
Addition: No
Conversion: No

28 Floor 2 - W.I.C.



Dimensions: 7'10" x 3'10"
Area: 30 sq. ft
Counted as living area: Yes

Heated: Yes
Finished: Yes
Enclosed: Yes
Contiguous: Yes
Permitted: Yes
Wet space: No
Addition: No
Conversion: No

29 Floor 2 - W.I.C.



Dimensions: 11'3" x 4'2"
Area: 47 sq. ft
Counted as living area: Yes

Heated: Yes
Finished: Yes
Enclosed: Yes
Contiguous: Yes
Permitted: Yes
Wet space: No
Addition: No
Conversion: No

30 Floor 2 - Bath



Dimensions: 5'10" x 3'9"
Area: 22 sq. ft
Counted as living area: Yes

Heated: Yes
Finished: Yes
Enclosed: Yes
Contiguous: Yes
Permitted: Yes
Wet space: Yes
Addition: No
Conversion: No