

301 Palestine Street, Alto, Cherokee County, Texas, United States, 75925



Property Summary



3 floors



5 bedrooms



3 bathrooms



5,135 total sqft

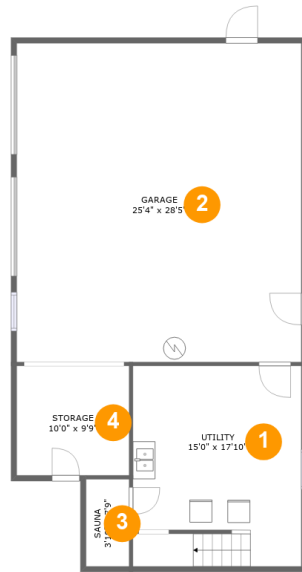


1 garages



3,719 Gross Living Area sqft

301 Palestine Street, Alto, Cherokee County, Texas, United States, 75925



Room Dimensions

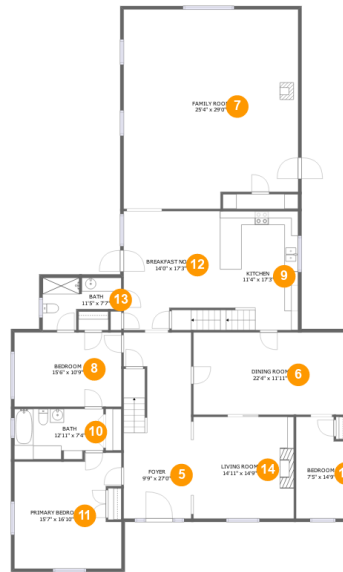
Floor 1

Total sqft: 1203

Living area: 0

#	Room name	Dimensions	Area (sqft)	Counted as Living Area
1	Utility	15'0" x 17'10"	265 sq. ft	No
2	Garage	25'4" x 28'5"	720 sq. ft	No
3	Sauna	3'10" x 7'9"	30 sq. ft	No
4	Storage	10'0" x 9'9"	98 sq. ft	No

301 Palestine Street, Alto, Cherokee County, Texas, United States, 75925



Room Dimensions

Floor 2

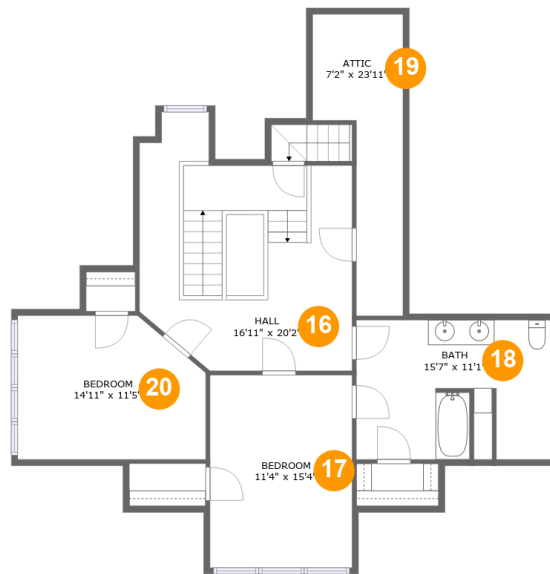
Total sqft: 2834

Living area: 2834

#	Room name	Dimensions	Area (sqft)	Counted as Living Area
5	Foyer	9'9" x 27'0"	262 sq. ft	Yes
6	Dining Room	22'4" x 11'11"	267 sq. ft	Yes
7	Family Room	25'4" x 29'0"	707 sq. ft	Yes
8	Bedroom	15'6" x 10'9"	168 sq. ft	Yes
9	Kitchen	11'4" x 17'3"	216 sq. ft	Yes
10	Bath	12'11" x 7'4"	90 sq. ft	Yes
11	Primary Bedroom	15'7" x 16'10"	237 sq. ft	Yes
12	Breakfast Nook	14'0" x 17'3"	218 sq. ft	Yes
13	Bath	11'5" x 7'7"	66 sq. ft	Yes
14	Living Room	14'11" x 14'9"	220 sq. ft	Yes
15	Bedroom	7'5" x 14'9"	102 sq. ft	Yes

Scan captured on Wed, 29 May 2024 18:55:01 GMT

Information is calculated by CubiCasa technology; deemed highly reliable but not guaranteed.

**301 Palestine Street, Alto, Cherokee County,
Texas, United States, 75925****Room Dimensions****Floor 3****Total sqft: 1098****Living area: 885**

#	Room name	Dimensions	Area (sqft)	Counted as Living Area
16	Hall	16'11" x 20'2"	277 sq. ft	Yes
17	Bedroom	11'4" x 15'4"	173 sq. ft	Yes
18	Bath	15'7" x 11'1"	168 sq. ft	Yes
19	Attic	7'2" x 23'11"	118 sq. ft	No
20	Bedroom	14'11" x 11'5"	158 sq. ft	Yes

301 Palestine Street, Alto, Cherokee County, Texas, United States, 75925

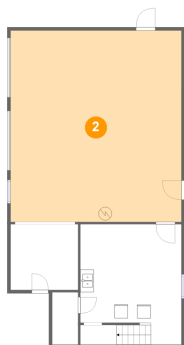
1 Floor 1 - Utility



Dimensions: 15'0" x 17'10"
Area: 265 sq. ft
Counted as Living Area: No

Heated: Yes
Finished: No
Enclosed: Yes
Contiguous: Yes
Permitted: Yes
Wet Space: No
Addition: No
Conversion: No

2 Floor 1 - Garage

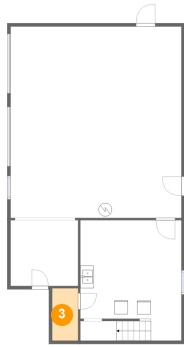


Dimensions: 25'4" x 28'5"
Area: 720 sq. ft
Counted as Living Area: No

Heated: No
Finished: No
Enclosed: Yes
Contiguous: Yes
Permitted: Yes
Wet Space: No
Addition: No
Conversion: No

301 Palestine Street, Alto, Cherokee County, Texas, United States, 75925

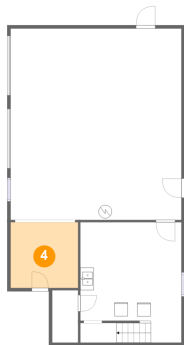
3 Floor 1 - Sauna



Dimensions: 3'10" x 7'9"
Area: 30 sq. ft
Counted as Living Area: No

Heated: No
Finished: No
Enclosed: No
Contiguous: Yes
Permitted: Yes
Wet Space: No
Addition: No
Conversion: No

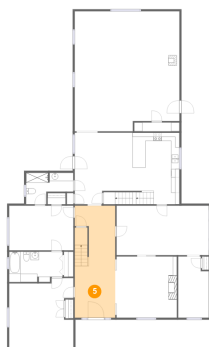
4 Floor 1 - Storage



Dimensions: 10'0" x 9'9"
Area: 98 sq. ft
Counted as Living Area: No

Heated: No
Finished: No
Enclosed: No
Contiguous: Yes
Permitted: Yes
Wet Space: No
Addition: No
Conversion: No

5 Floor 2 - Foyer

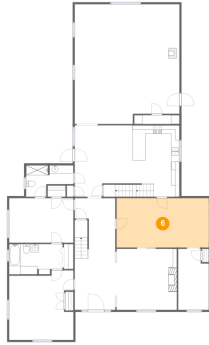


Dimensions: 9'9" x 27'0"
Area: 262 sq. ft
Counted as Living Area: Yes

Heated: Yes
Finished: Yes
Enclosed: Yes
Contiguous: Yes
Permitted: Yes
Wet Space: No
Addition: No
Conversion: No

301 Palestine Street, Alto, Cherokee County, Texas, United States, 75925

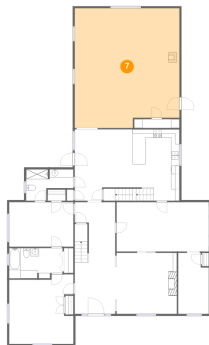
6 Floor 2 - Dining Room



Dimensions: 22'4" x 11'11"
Area: 267 sq. ft
Counted as Living Area:
Yes

Heated: Yes
Finished: Yes
Enclosed: Yes
Contiguous:
Yes
Permitted: Yes
Wet Space: No
Addition: No
Conversion: No

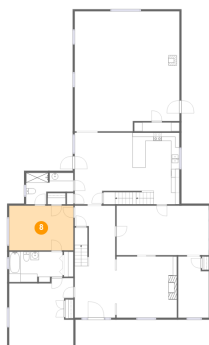
7 Floor 2 - Family Room



Dimensions: 25'4" x 29'0"
Area: 707 sq. ft
Counted as Living Area:
Yes

Heated: Yes
Finished: Yes
Enclosed: Yes
Contiguous:
Yes
Permitted: Yes
Wet Space: No
Addition: No
Conversion: No

8 Floor 2 - Bedroom

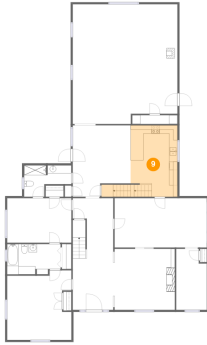


Dimensions: 15'6" x 10'9"
Area: 168 sq. ft
Counted as Living Area:
Yes

Heated: Yes
Finished: Yes
Enclosed: Yes
Contiguous:
Yes
Permitted: Yes
Wet Space: No
Addition: No
Conversion: No

301 Palestine Street, Alto, Cherokee County, Texas, United States, 75925

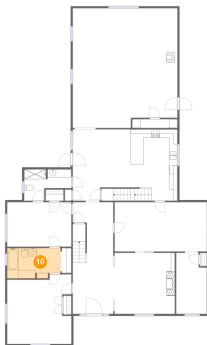
9 Floor 2 - Kitchen



Dimensions: 11'4" x 17'3"
Area: 216 sq. ft
Counted as Living Area:
Yes

Heated: Yes
Finished: Yes
Enclosed: Yes
Contiguous:
Yes
Permitted: Yes
Wet Space: No
Addition: No
Conversion: No

10 Floor 2 - Bath



Dimensions: 12'11" x 7'4"
Area: 90 sq. ft
Counted as Living Area:
Yes

Heated: Yes
Finished: Yes
Enclosed: Yes
Contiguous:
Yes
Permitted: Yes
Wet Space: Yes
Addition: No
Conversion: No

11 Floor 2 - Primary Bedroom

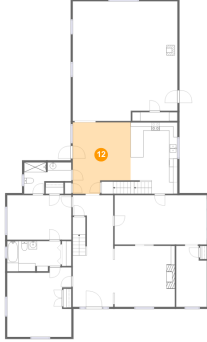


Dimensions: 15'7" x 16'10"
Area: 237 sq. ft
Counted as Living Area:
Yes

Heated: Yes
Finished: Yes
Enclosed: Yes
Contiguous:
Yes
Permitted: Yes
Wet Space: No
Addition: No
Conversion: No

**301 Palestine Street, Alto, Cherokee County,
Texas, United States, 75925**

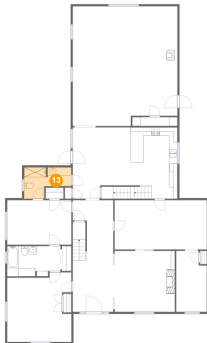
12 Floor 2 - Breakfast Nook



Dimensions: 14'0" x 17'3"
Area: 218 sq. ft
Counted as Living Area:
Yes

Heated: Yes
Finished: Yes
Enclosed: Yes
Contiguous:
Yes
Permitted: Yes
Wet Space: No
Addition: No
Conversion: No

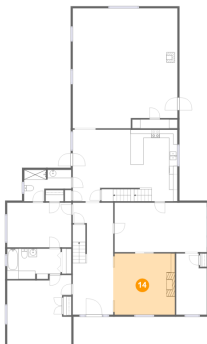
13 Floor 2 - Bath



Dimensions: 11'5" x 7'7"
Area: 66 sq. ft
Counted as Living Area:
Yes

Heated: Yes
Finished: Yes
Enclosed: Yes
Contiguous:
Yes
Permitted: Yes
Wet Space: Yes
Addition: No
Conversion: No

14 Floor 2 - Living Room

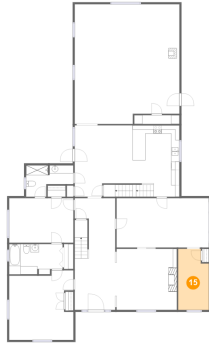


Dimensions: 14'11" x 14'9"
Area: 220 sq. ft
Counted as Living Area:
Yes

Heated: Yes
Finished: Yes
Enclosed: Yes
Contiguous:
Yes
Permitted: Yes
Wet Space: No
Addition: No
Conversion: No

301 Palestine Street, Alto, Cherokee County, Texas, United States, 75925

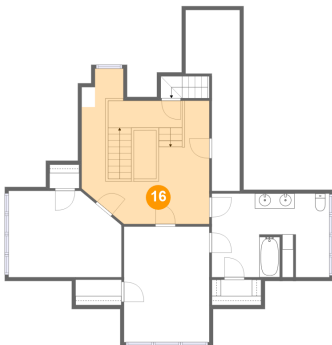
15 Floor 2 - Bedroom



Dimensions: 7'5" x 14'9"
Area: 102 sq. ft
Counted as Living Area:
Yes

Heated: Yes
Finished: Yes
Enclosed: Yes
Contiguous:
Yes
Permitted: Yes
Wet Space: No
Addition: No
Conversion: No

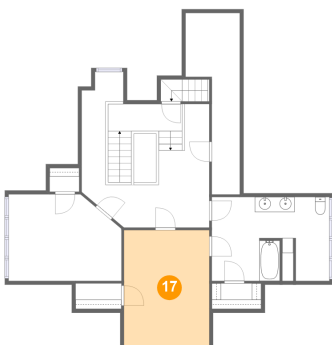
16 Floor 3 - Hall



Dimensions: 16'11" x 20'2"
Area: 277 sq. ft
Counted as Living Area:
Yes

Heated: Yes
Finished: Yes
Enclosed: Yes
Contiguous:
Yes
Permitted: Yes
Wet Space: No
Addition: No
Conversion: No

17 Floor 3 - Bedroom

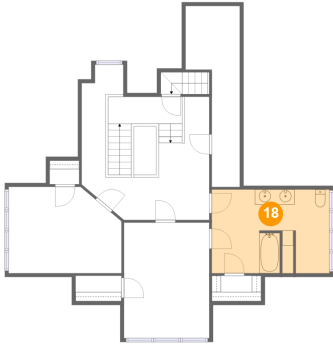


Dimensions: 11'4" x 15'4"
Area: 173 sq. ft
Counted as Living Area:
Yes

Heated: Yes
Finished: Yes
Enclosed: Yes
Contiguous:
Yes
Permitted: Yes
Wet Space: No
Addition: No
Conversion: No

**301 Palestine Street, Alto, Cherokee County,
Texas, United States, 75925**

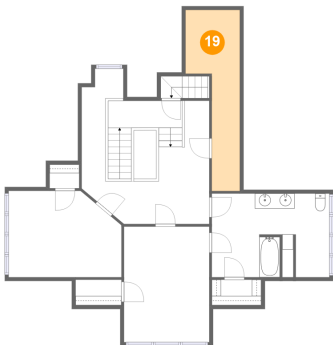
18 Floor 3 - Bath



Dimensions: 15'7" x 11'1"
Area: 168 sq. ft
Counted as Living Area:
Yes

Heated: Yes
Finished: Yes
Enclosed: Yes
Contiguous:
Yes
Permitted: Yes
Wet Space: Yes
Addition: No
Conversion: No

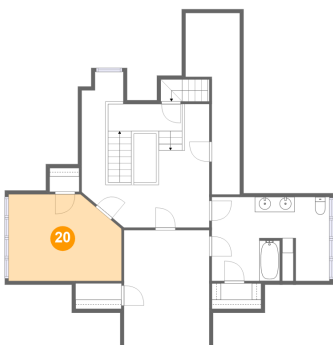
19 Floor 3 - Attic



Dimensions: 7'2" x 23'11"
Area: 118 sq. ft
Counted as Living Area: No

Heated: No
Finished: No
Enclosed: Yes
Contiguous: Yes
Permitted: Yes
Wet Space: No
Addition: No
Conversion: No

20 Floor 3 - Bedroom



Dimensions: 14'11" x 11'5"
Area: 158 sq. ft
Counted as Living Area:
Yes

Heated: Yes
Finished: Yes
Enclosed: Yes
Contiguous:
Yes
Permitted: Yes
Wet Space: No
Addition: No
Conversion: No