

3530 Trestle Court

Coquitlam BC V3E 0L5

Lower Level Area: 1,175 SQ.FT.
 Main Level Area: 1,190 SQ.FT.
 Upper Level Area: 1,401 SQ.FT.
Total Livable Area 3,766 SQ.FT.
 Garage Area: 352 SQ.FT.
Total Area 4,118 SQ.FT.

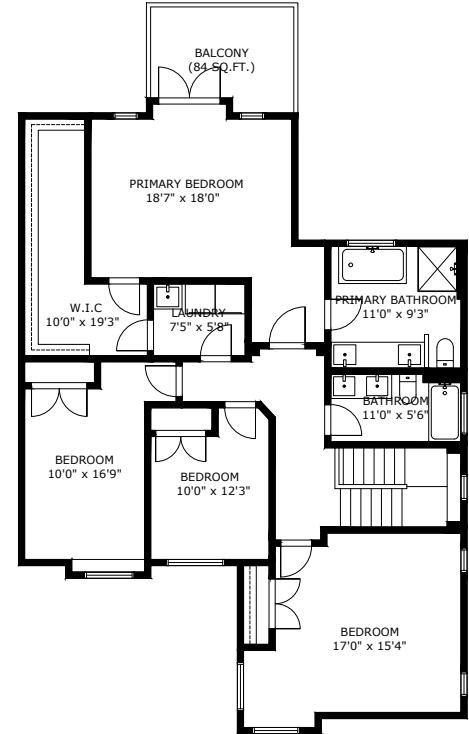
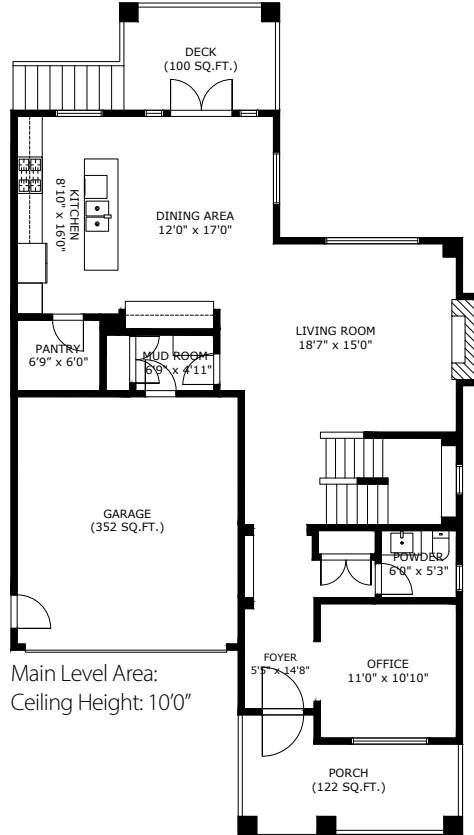
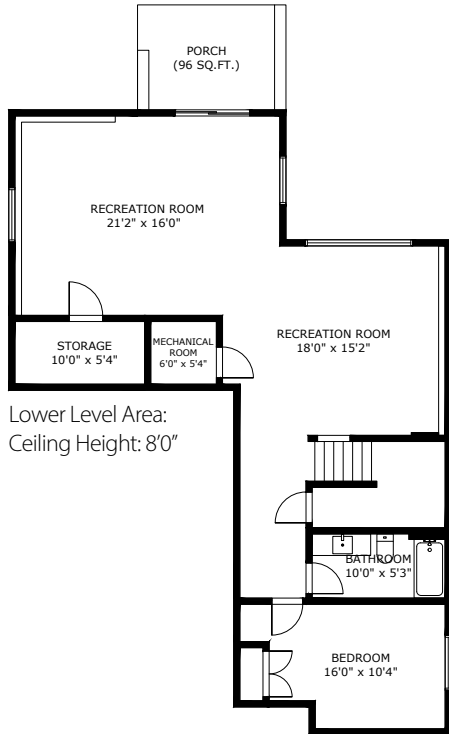
5



4



3,766



3530 TRESTLE CRT COQUITLAM BC V3E 0L5

Measurements are approximate and may not be to scale. Gross measurements as per BCASSESSMENT
 The floor plan illustration is not suitable for construction/architectural purposes.
 This communication is not intended to cause or induce breach of an existing agency agreement



Professionally measured by 3D Immersive Marketing Ltd

Lead Floor Planner: *Sara Alexander*
 Quality Assurance: *Diana Gubins*