

7 Summit Oaks Circle, Denison, Grayson County, Texas, United States, 75020

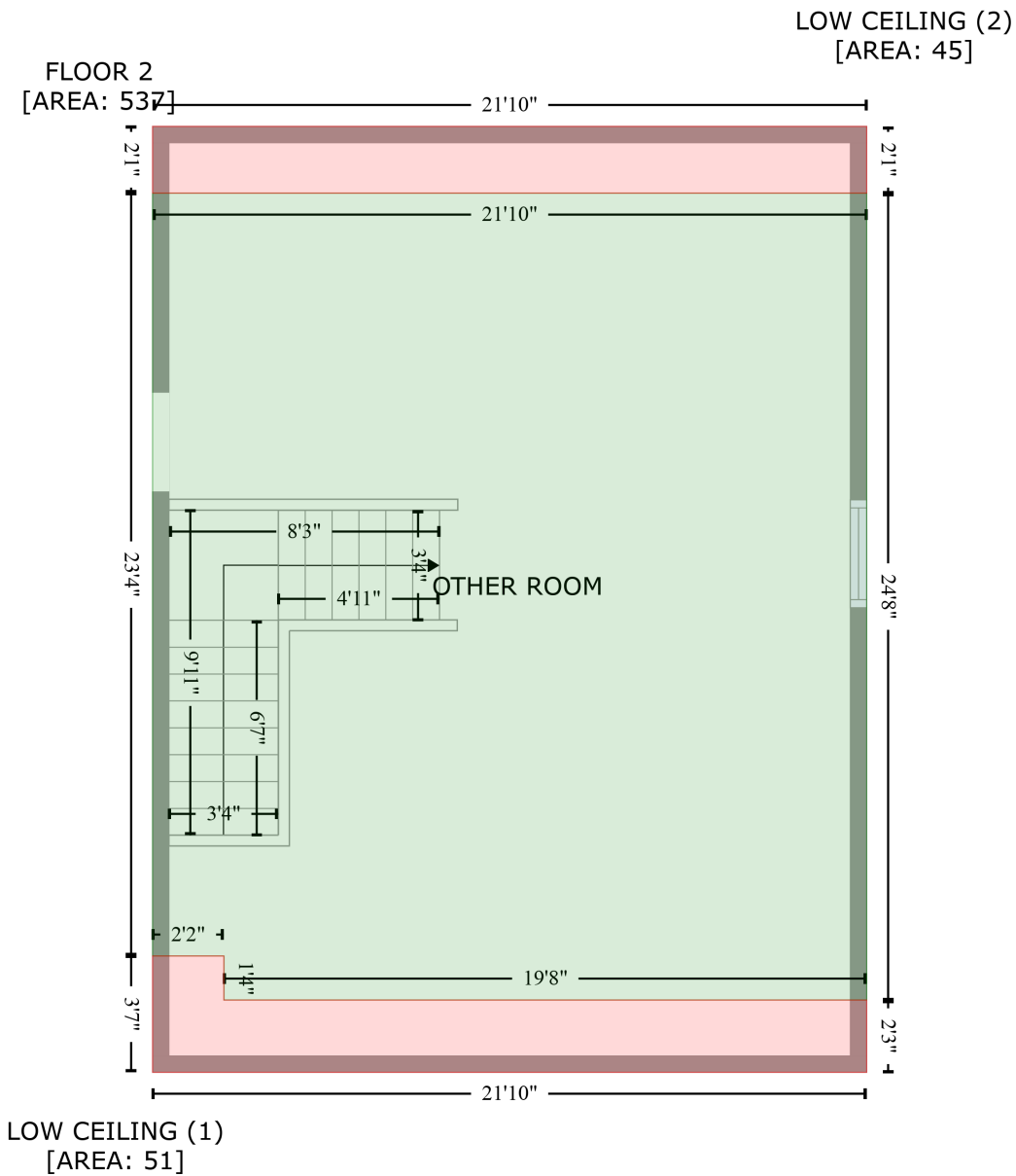
Gross Living Area: 3835 sq. ft



Space	Area (sq. ft)	Calculation
FLOOR 1 (Living area)	3298	Coordinate Polygon Area Algorithm using inches $-((382.1 + 382.1) * (-2.9 - 128.3) + (382.1 + 401.4) * (128.3 - 128.3) + (401.4 + 401.4) * (128.3 - 155.4) + (401.4 + 629) * (155.4 - 155.4) + (629 + 629) * (155.4 - 38.1) + (629 + 913.2) * (38.1 - 38.1) + (913.2 + 913.2) * (38.1 - 223.4) + (913.2 + 920.9) * (223.4 - 223.4) + (920.9 + 920.9) * (223.4 - 419.5) + (920.9 + 916.9) * (419.5 - 419.5) + (916.9 + 922.9) * (419.5 - 425.5) + (922.9 + 922.9) * (425.5 - 443.9) + (922.9 + 839.2) * (443.9 - 443.9) + (839.2 + 839.2) * (443.9 - 532) + (839.2 + 833.2) * (532 - 532) + (833.2 + 833.2) * (532 - 538) + (833.2 + 682.2) * (538 - 538) + (682.2 + 682.2) * (538 - 502.5) + (682.2 + 525.7) * (502.5 - 502.5) + (525.7 + 525.7) * (502.5 - 552.9) + (525.7 + 496.2) * (552.9 - 552.9) + (496.2 + 496.2) * (552.9 - 629.5) + (496.2 + 345.4) * (629.5 - 629.5) + (345.4 + 345.4) * (629.5 - 649.9) + (345.4 + 77.1) * (649.9 - 649.9) + (77.1 + 77.1) * (649.9 - 499.7) + (77.1 + -1.4) * (499.7 - 499.7) + (-1.4 + -1.4) * (499.7 - -2.9) + (-1.4 + 382.1) * (-2.9 - -2.9)) * 0.5 * 0.00694$
GARAGE (Non-living area)	731	$-((1177.6 + 1177.6) * (223.4 - 608.4) + (1177.6 + 1088.8) * (608.4 - 608.4) + (1088.8 + 1088.8) * (608.4 - 627.3) + (1088.8 + 919.4) * (627.3 - 627.3) + (919.4 + 919.4) * (627.3 - 608.4) + (919.4 + 833.2) * (608.4 - 608.4) + (833.2 + 833.2) * (608.4 - 532) + (833.2 + 839.2) * (532 - 532) + (839.2 + 839.2) * (532 - 443.9) + (839.2 + 922.9) * (443.9 - 443.9) + (922.9 + 922.9) * (443.9 - 425.5) + (922.9 + 916.9) * (425.5 - 419.5) + (916.9 + 961.2) * (419.5 - 419.5) + (961.2 + 961.2) * (419.5 - 269.6) + (961.2 + 1018.9) * (269.6 - 269.6) + (1018.9 + 1018.9) * (269.6 - 229.4) + (1018.9 + 1024.9) * (229.4 - 229.4) + (1024.9 + 1024.9) * (229.4 - 223.4) + (1024.9 + 1177.6) * (223.4 - 223.4)) * 0.5 * 0.00694$
STORAGE (Non-living area)	74	$-((1024.9 + 1024.9) * (223.4 - 229.4) + (1024.9 + 1018.9) * (229.4 - 229.4) + (1018.9 + 1018.9) * (229.4 - 269.6) + (1018.9 + 961.2) * (269.6 - 269.6) + (961.2 + 961.2) * (269.6 - 419.5) + (961.2 + 920.9) * (419.5 - 419.5) + (920.9 + 920.9) * (419.5 - 223.4) + (920.9 + 1024.9) * (223.4 - 223.4)) * 0.5 * 0.00694$

7 Summit Oaks Circle, Denison, Grayson County, Texas, United States, 75020

Gross Living Area: 3835 sq. ft



Space	Area (sq. ft)	Calculation <small>Coordinate Polygon Area Algorithm using inches</small>
FLOOR 2 (Living area)	537	$-\left((1177.5 + 1177.5) * (118.4 - 414.9) + (1177.5 + 941.2) * (414.9 - 414.9) + (941.2 + 941.2) * (414.9 - 398.7) + (941.2 + 915) * (398.7 - 398.7) + (915 + 915) * (398.7 - 118.4) + (915 + 1177.5) * (118.4 - 118.4)\right) * 0.5 * 0.00694$
LOW CEILING (Non-living area)	51	$-\left((941.2 + 941.2) * (398.7 - 414.9) + (941.2 + 1177.5) * (414.9 - 414.9) + (1177.5 + 1177.5) * (414.9 - 441.4) + (1177.5 + 915) * (441.4 - 441.4) + (915 + 915) * (441.4 - 398.7) + (915 + 941.2) * (398.7 - 398.7)\right) * 0.5 * 0.00694$

7 Summit Oaks Circle, Denison, Grayson County, Texas, United States, 75020

Gross Living Area: 3835 sq. ft

Space	Area (sq. ft)	Calculation <small>Coordinate Polygon Area Algorithm using inches</small>
LOW CEILING (Non-living area)	45	$-((1177.5 + 1177.5) * (93.9 - 118.4) + (1177.5 + 915) * (118.4 - 118.4) + (915 + 915) * (118.4 - 93.9) + (915 + 1177.5) * (93.9 - 93.9)) * 0.5 * 0.00694$