



Home report


5235 Ridge Chapel Road, Marion, Wayne County, New York,  
United States, 14505





Property summary


 **0** Garages


 **6** Bedrooms

 **3** Bathrooms

 **1** Half baths

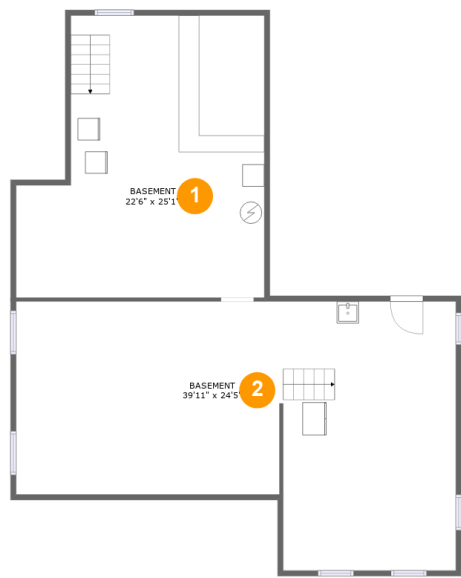
 **3** Floors

 **3,273** Gross living area sqft

 **4,682** Total sqft

Home report

5235 Ridge Chapel Road, Marion, Wayne County, New York,  
United States, 14505



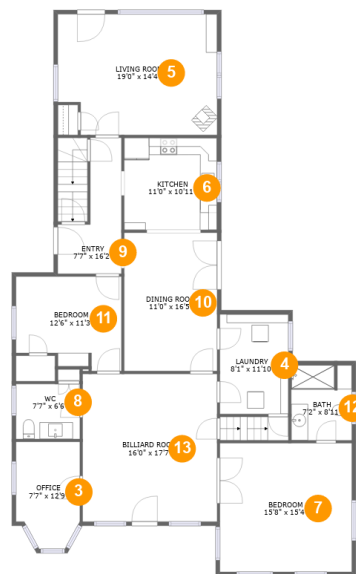
Room dimensions

Floor 1 Total sqft: 1409    Living area: 0

#		Dimensions	sqft	Counted as living area
1	Basement	22'6" x 25'1"	501 sq. ft	No
2	Basement	39'11" x 24'5"	806 sq. ft	No

Home report

5235 Ridge Chapel Road, Marion, Wayne County, New York,  
United States, 14505



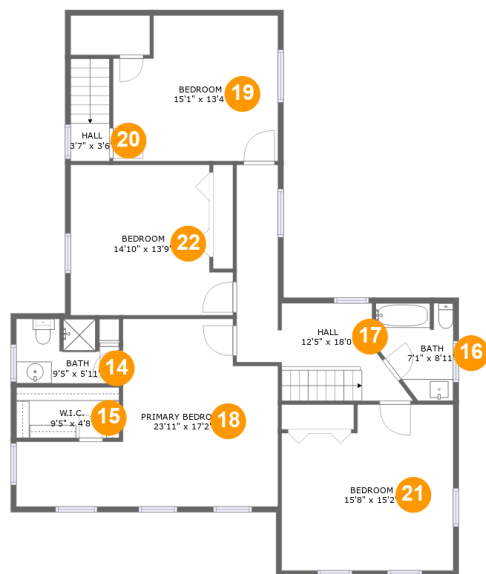
Room dimensions

Floor 2 Total sqft: 1856    Living area: 1856

#		Dimensions	sqft	Counted as living area
3	Office	7'7" x 12'9"	88 sq. ft	Yes
4	Laundry	8'1" x 11'10"	97 sq. ft	Yes
5	Living Room	19'0" x 14'4"	262 sq. ft	Yes
6	Kitchen	11'0" x 10'11"	121 sq. ft	Yes
7	Bedroom	15'8" x 15'4"	240 sq. ft	Yes
8	WC	7'7" x 6'6"	50 sq. ft	Yes
9	Entry	7'7" x 16'2"	83 sq. ft	Yes
10	Dining Room	11'0" x 16'5"	182 sq. ft	Yes
11	Bedroom	12'6" x 11'3"	127 sq. ft	Yes
12	Bath	7'2" x 8'11"	63 sq. ft	Yes
13	Billiard Room	16'0" x 17'7"	281 sq. ft	Yes

Home report

5235 Ridge Chapel Road, Marion, Wayne County, New York,  
United States, 14505



Room dimensions

Floor 3 Total sqft: 1417    Living area: 1417

#		Dimensions	sqft	Counted as living area
14	Bath	9'5" x 5'11"	49 sq. ft	Yes
15	W.I.C.	9'5" x 4'8"	44 sq. ft	Yes
16	Bath	7'1" x 8'11"	53 sq. ft	Yes
17	Hall	12'5" x 18'0"	152 sq. ft	Yes
18	Primary Bedroom	23'11" x 17'2"	283 sq. ft	Yes
19	Bedroom	15'1" x 13'4"	186 sq. ft	Yes
20	Hall	3'7" x 3'6"	33 sq. ft	Yes
21	Bedroom	15'8" x 15'2"	220 sq. ft	Yes
22	Bedroom	14'10" x 13'9"	183 sq. ft	Yes

5235 Ridge Chapel Road, Marion, Wayne County, New York,  
United States, 14505

1 Floor 1 - Basement



Dimensions: 22'6" x 25'1"  
Area: 501 sq. ft  
Counted as living area: No

Heated: Yes  
Finished: No  
Enclosed: Yes  
Contiguous: Yes  
Permitted: Yes  
Wet space: No  
Addition: No  
Conversion: No

2 Floor 1 - Basement



Dimensions: 39'11" x 24'5"  
Area: 806 sq. ft  
Counted as living area: No

Heated: Yes  
Finished: No  
Enclosed: Yes  
Contiguous: Yes  
Permitted: Yes  
Wet space: No  
Addition: No  
Conversion: No

## Home report

5235 Ridge Chapel Road, Marion, Wayne County, New York,  
United States, 14505

### 3 Floor 2 - Office



Dimensions: 7'7" x 12'9"  
Area: 88 sq. ft  
Counted as living area: Yes

Heated: Yes  
Finished: Yes  
Enclosed: Yes  
Contiguous: Yes  
Permitted: Yes  
Wet space: No  
Addition: No  
Conversion: No

### 4 Floor 2 - Laundry



Dimensions: 8'1" x 11'10"  
Area: 97 sq. ft  
Counted as living area: Yes

Heated: Yes  
Finished: Yes  
Enclosed: Yes  
Contiguous: Yes  
Permitted: Yes  
Wet space: No  
Addition: No  
Conversion: No

### 5 Floor 2 - Living Room



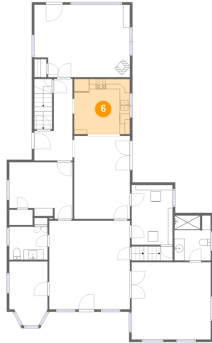
Dimensions: 19'0" x 14'4"  
Area: 262 sq. ft  
Counted as living area: Yes

Heated: Yes  
Finished: Yes  
Enclosed: Yes  
Contiguous: Yes  
Permitted: Yes  
Wet space: No  
Addition: No  
Conversion: No

## Home report

5235 Ridge Chapel Road, Marion, Wayne County, New York,  
United States, 14505

### 6 Floor 2 - Kitchen



Dimensions: 11'0" x 10'11"  
Area: 121 sq. ft  
Counted as living area: Yes

Heated: Yes  
Finished: Yes  
Enclosed: Yes  
Contiguous: Yes  
Permitted: Yes  
Wet space: No  
Addition: No  
Conversion: No

### 7 Floor 2 - Bedroom



Dimensions: 15'8" x 15'4"  
Area: 240 sq. ft  
Counted as living area: Yes

Heated: Yes  
Finished: Yes  
Enclosed: Yes  
Contiguous: Yes  
Permitted: Yes  
Wet space: No  
Addition: No  
Conversion: No

### 8 Floor 2 - WC



Dimensions: 7'7" x 6'6"  
Area: 50 sq. ft  
Counted as living area: Yes

Heated: Yes  
Finished: Yes  
Enclosed: Yes  
Contiguous: Yes  
Permitted: Yes  
Wet space: Yes  
Addition: No  
Conversion: No

## Home report

5235 Ridge Chapel Road, Marion, Wayne County, New York,  
United States, 14505

### 9 Floor 2 - Entry



Dimensions: 7'7" x 16'2"  
Area: 83 sq. ft  
Counted as living area: Yes

Heated: Yes  
Finished: Yes  
Enclosed: Yes  
Contiguous: Yes  
Permitted: Yes  
Wet space: No  
Addition: No  
Conversion: No

### 10 Floor 2 - Dining Room



Dimensions: 11'0" x 16'5"  
Area: 182 sq. ft  
Counted as living area: Yes

Heated: Yes  
Finished: Yes  
Enclosed: Yes  
Contiguous: Yes  
Permitted: Yes  
Wet space: No  
Addition: No  
Conversion: No

### 11 Floor 2 - Bedroom



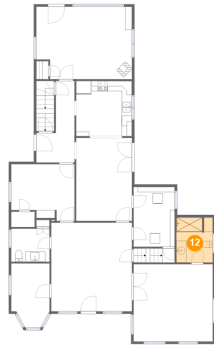
Dimensions: 12'6" x 11'3"  
Area: 127 sq. ft  
Counted as living area: Yes

Heated: Yes  
Finished: Yes  
Enclosed: Yes  
Contiguous: Yes  
Permitted: Yes  
Wet space: No  
Addition: No  
Conversion: No



5235 Ridge Chapel Road, Marion, Wayne County, New York,  
United States, 14505

## 12 Floor 2 - Bath



Dimensions: 7'2" x 8'11"  
Area: 63 sq. ft  
Counted as living area: Yes

Heated: Yes  
Finished: Yes  
Enclosed: Yes  
Contiguous: Yes  
Permitted: Yes  
Wet space: Yes  
Addition: No  
Conversion: No

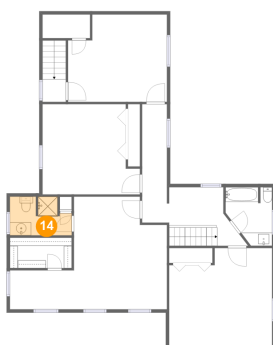
## 13 Floor 2 - Billiard Room



Dimensions: 16'0" x 17'7"  
Area: 281 sq. ft  
Counted as living area: Yes

Heated: Yes  
Finished: Yes  
Enclosed: Yes  
Contiguous: Yes  
Permitted: Yes  
Wet space: No  
Addition: No  
Conversion: No

## 14 Floor 3 - Bath

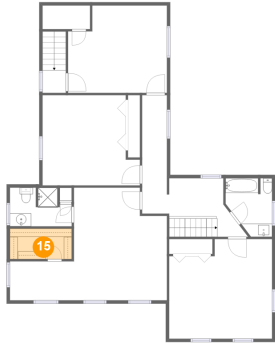


Dimensions: 9'5" x 5'11"  
Area: 49 sq. ft  
Counted as living area: Yes

Heated: Yes  
Finished: Yes  
Enclosed: Yes  
Contiguous: Yes  
Permitted: Yes  
Wet space: Yes  
Addition: No  
Conversion: No

5235 Ridge Chapel Road, Marion, Wayne County, New York,  
United States, 14505

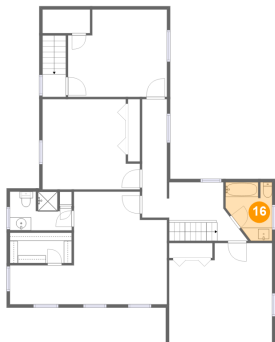
### 15 Floor 3 - W.I.C.



Dimensions: 9'5" x 4'8"  
Area: 44 sq. ft  
Counted as living area: Yes

Heated: Yes  
Finished: Yes  
Enclosed: Yes  
Contiguous: Yes  
Permitted: Yes  
Wet space: No  
Addition: No  
Conversion: No

### 16 Floor 3 - Bath



Dimensions: 7'1" x 8'11"  
Area: 53 sq. ft  
Counted as living area: Yes

Heated: Yes  
Finished: Yes  
Enclosed: Yes  
Contiguous: Yes  
Permitted: Yes  
Wet space: Yes  
Addition: No  
Conversion: No

### 17 Floor 3 - Hall



Dimensions: 12'5" x 18'0"  
Area: 152 sq. ft  
Counted as living area: Yes

Heated: Yes  
Finished: Yes  
Enclosed: Yes  
Contiguous: Yes  
Permitted: Yes  
Wet space: No  
Addition: No  
Conversion: No

5235 Ridge Chapel Road, Marion, Wayne County, New York,  
United States, 14505

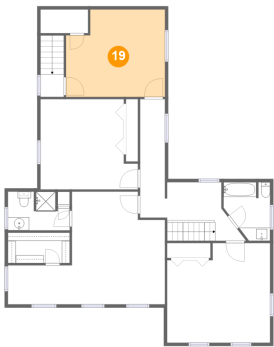
18 Floor 3 - Primary Bedroom



Dimensions: 23'11" x 17'2"  
Area: 283 sq. ft  
Counted as living area: Yes

Heated: Yes  
Finished: Yes  
Enclosed: Yes  
Contiguous: Yes  
Permitted: Yes  
Wet space: No  
Addition: No  
Conversion: No

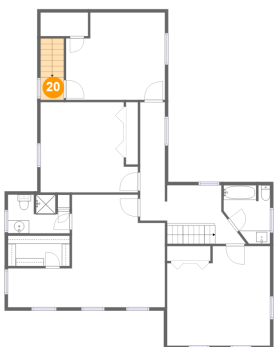
19 Floor 3 - Bedroom



Dimensions: 15'1" x 13'4"  
Area: 186 sq. ft  
Counted as living area: Yes

Heated: Yes  
Finished: Yes  
Enclosed: Yes  
Contiguous: Yes  
Permitted: Yes  
Wet space: No  
Addition: No  
Conversion: No

20 Floor 3 - Hall

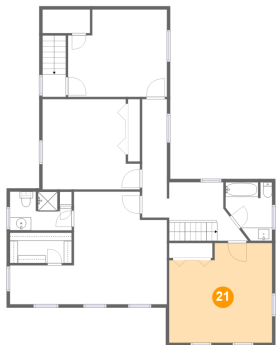


Dimensions: 3'7" x 3'6"  
Area: 33 sq. ft  
Counted as living area: Yes

Heated: Yes  
Finished: Yes  
Enclosed: Yes  
Contiguous: Yes  
Permitted: Yes  
Wet space: No  
Addition: No  
Conversion: No

5235 Ridge Chapel Road, Marion, Wayne County, New York,  
United States, 14505

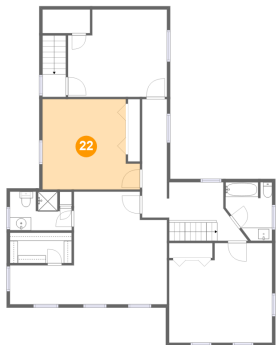
21 Floor 3 - Bedroom



Dimensions: 15'8" x 15'2"  
Area: 220 sq. ft  
Counted as living area: Yes

Heated: Yes  
Finished: Yes  
Enclosed: Yes  
Contiguous: Yes  
Permitted: Yes  
Wet space: No  
Addition: No  
Conversion: No

22 Floor 3 - Bedroom



Dimensions: 14'10" x 13'9"  
Area: 183 sq. ft  
Counted as living area: Yes

Heated: Yes  
Finished: Yes  
Enclosed: Yes  
Contiguous: Yes  
Permitted: Yes  
Wet space: No  
Addition: No  
Conversion: No