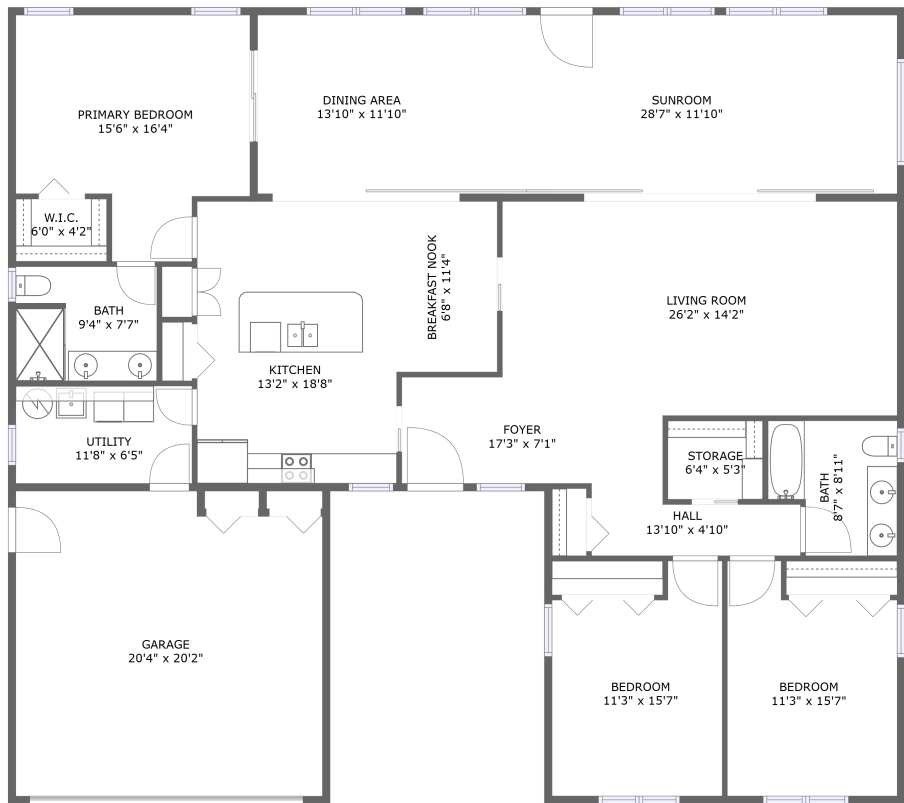


Home report

14583 Anchorage Circle, Imperial Point, Seminole, Pinellas  
County, Florida, United States, 33776



FLOOR 1

Total Area: 2185 sq. ft


Floor 1: 2185 sq. ft

Excluded: Garage 396 sq. ft, Storage 33 sq. ft, Utility 75 sq. ft, Walls: 148 sq. ft

Property summary

 **1** Floors

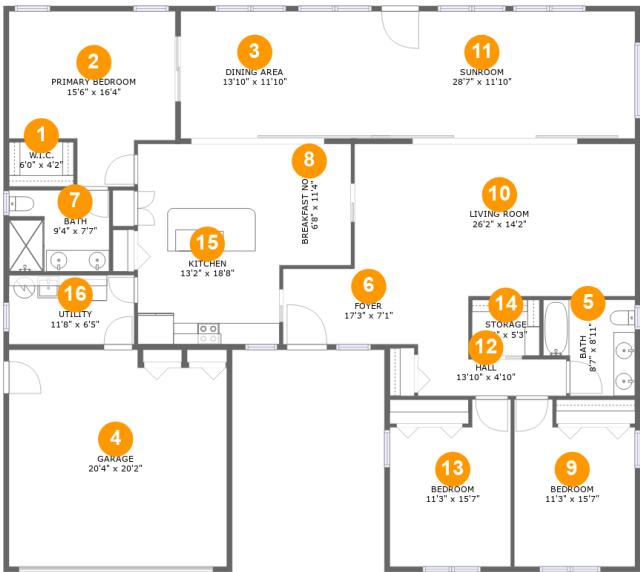
 **3** Bedrooms

 **2** Bathrooms

 **1** Garages

Home report

14583 Anchorage Circle, Imperial Point, Seminole, Pinellas  
County, Florida, United States, 33776



Room dimensions

Floor 1 Total:2185sqft    Excluded: 504sqft

#		Max Dimensions	sqft	Included
1	W.I.C.	6'0" x 4'2"	25 sq. ft	Yes
2	Primary Bedroom	15'6" x 16'4"	208 sq. ft	Yes
3	Dining Area	13'10" x 11'10"	164 sq. ft	Yes
4	Garage	20'4" x 20'2"	396 sq. ft	No
5	Bath	8'7" x 8'11"	67 sq. ft	Yes
6	Foyer	17'3" x 7'1"	110 sq. ft	Yes
7	Bath	9'4" x 7'7"	70 sq. ft	Yes
8	Breakfast Nook	6'8" x 11'4"	75 sq. ft	Yes
9	Bedroom	11'3" x 15'7"	155 sq. ft	Yes
10	Living Room	26'2" x 14'2"	355 sq. ft	Yes
11	Sunroom	28'7" x 11'10"	338 sq. ft	Yes

## Home report

**14583 Anchorage Circle, Imperial Point, Seminole, Pinellas  
County, Florida, United States, 33776**

#		Max Dimensions	sqft	Included
12	Hall	13'10" x 4'10"	54 sq. ft	Yes
13	Bedroom	11'3" x 15'7"	156 sq. ft	Yes
14	Storage	6'4" x 5'3"	33 sq. ft	No
15	Kitchen	13'2" x 18'8"	247 sq. ft	Yes
16	Utility	11'8" x 6'5"	75 sq. ft	No

14583 Anchorage Circle, Imperial Point, Seminole, Pinellas  
County, Florida, United States, 33776

1 Floor 1 - W.I.C.



Max Dimensions: 6'0" x 4'2"  
Calculated Area: 25 sq. ft  
Included: Yes

Heated: Yes  
Finished: Yes  
Enclosed: Yes  
Contiguous: Yes  
Permitted: Yes  
Wet space: No  
Addition: No  
Conversion: No

2 Floor 1 - Primary Bedroom

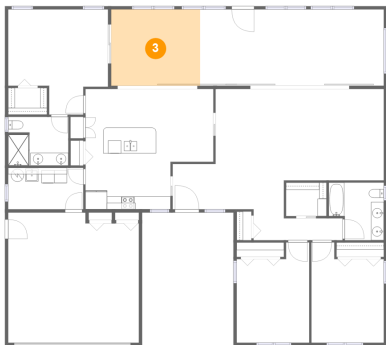


Max Dimensions: 15'6" x 16'4"  
Calculated Area: 208 sq. ft  
Included: Yes

Heated: Yes  
Finished: Yes  
Enclosed: Yes  
Contiguous: Yes  
Permitted: Yes  
Wet space: No  
Addition: No  
Conversion: No

14583 Anchorage Circle, Imperial Point, Seminole, Pinellas  
County, Florida, United States, 33776

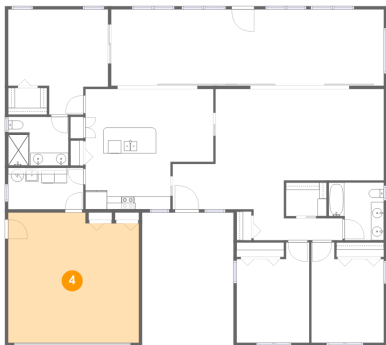
3 Floor 1 - Dining Area



Max Dimensions: 13'10" x 11'10"  
Calculated Area: 164 sq. ft  
Included: Yes

Heated: Yes  
Finished: Yes  
Enclosed: Yes  
Contiguous: Yes  
Permitted: Yes  
Wet space: No  
Addition: No  
Conversion: No

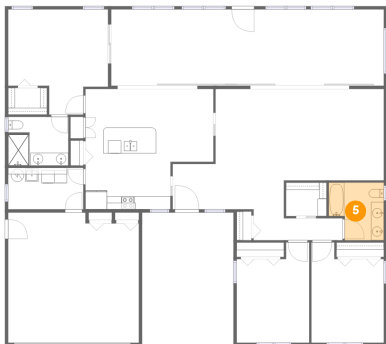
4 Floor 1 - Garage



Max Dimensions: 20'4" x 20'2"  
Calculated Area: 396 sq. ft  
Included: No

Heated: No  
Finished: No  
Enclosed: Yes  
Contiguous: Yes  
Permitted: Yes  
Wet space: No  
Addition: No  
Conversion: No

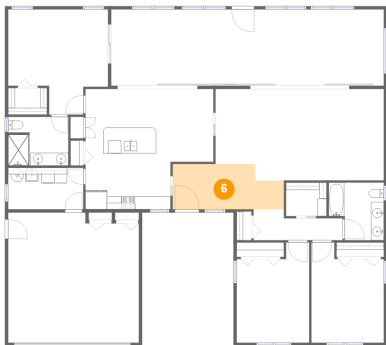
5 Floor 1 - Bath



Max Dimensions: 8'7" x 8'11"  
Calculated Area: 67 sq. ft  
Included: Yes

Heated: Yes  
Finished: Yes  
Enclosed: Yes  
Contiguous: Yes  
Permitted: Yes  
Wet space: Yes  
Addition: No  
Conversion: No

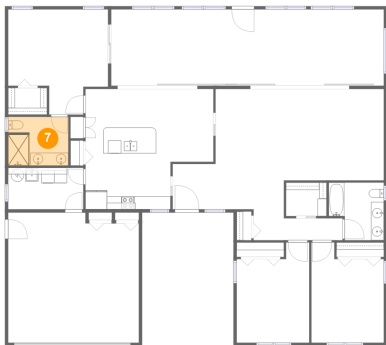
6 Floor 1 - Foyer



Max Dimensions: 17'3" x 7'1"  
Calculated Area: 110 sq. ft  
Included: Yes

Heated: Yes  
Finished: Yes  
Enclosed: Yes  
Contiguous: Yes  
Permitted: Yes  
Wet space: No  
Addition: No  
Conversion: No

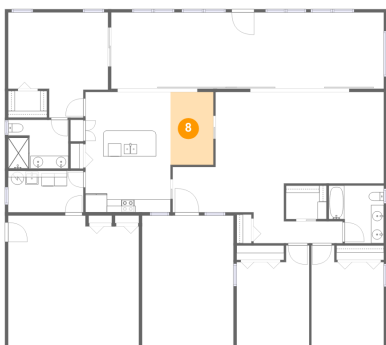
7 Floor 1 - Bath



Max Dimensions: 9'4" x 7'7"  
Calculated Area: 70 sq. ft  
Included: Yes

Heated: Yes  
Finished: Yes  
Enclosed: Yes  
Contiguous: Yes  
Permitted: Yes  
Wet space: Yes  
Addition: No  
Conversion: No

8 Floor 1 - Breakfast Nook

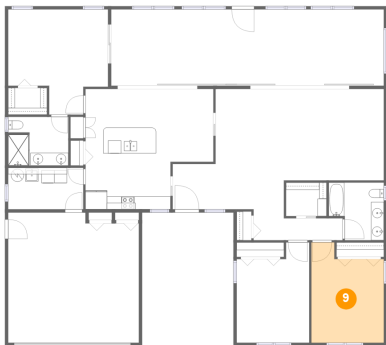


Max Dimensions: 6'8" x 11'4"  
Calculated Area: 75 sq. ft  
Included: Yes

Heated: Yes  
Finished: Yes  
Enclosed: Yes  
Contiguous: Yes  
Permitted: Yes  
Wet space: No  
Addition: No  
Conversion: No

14583 Anchorage Circle, Imperial Point, Seminole, Pinellas  
County, Florida, United States, 33776

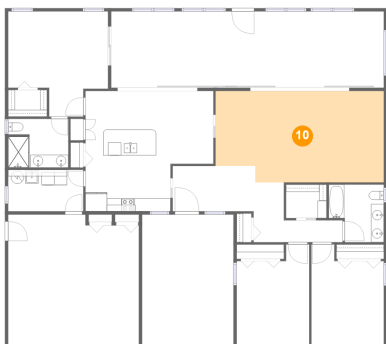
9 Floor 1 - Bedroom



Max Dimensions: 11'3" x 15'7"  
Calculated Area: 155 sq. ft  
Included: Yes

Heated: Yes  
Finished: Yes  
Enclosed: Yes  
Contiguous: Yes  
Permitted: Yes  
Wet space: No  
Addition: No  
Conversion: No

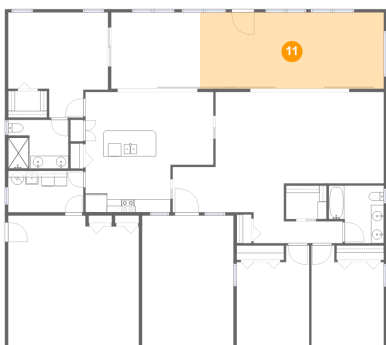
10 Floor 1 - Living Room



Max Dimensions: 26'2" x 14'2"  
Calculated Area: 355 sq. ft  
Included: Yes

Heated: Yes  
Finished: Yes  
Enclosed: Yes  
Contiguous: Yes  
Permitted: Yes  
Wet space: No  
Addition: No  
Conversion: No

11 Floor 1 - Sunroom



Max Dimensions: 28'7" x 11'10"  
Calculated Area: 338 sq. ft  
Included: Yes

Heated: Yes  
Finished: Yes  
Enclosed: Yes  
Contiguous: Yes  
Permitted: Yes  
Wet space: No  
Addition: No  
Conversion: No

## Home report

14583 Anchorage Circle, Imperial Point, Seminole, Pinellas  
County, Florida, United States, 33776

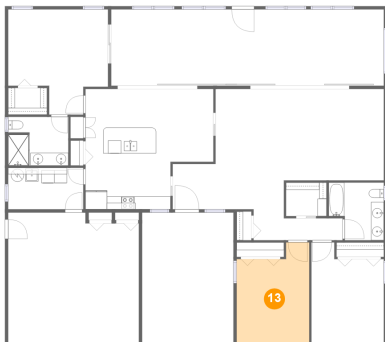
### 12 Floor 1 - Hall



Max Dimensions: 13'10" x 4'10"  
Calculated Area: 54 sq. ft  
Included: Yes

Heated: Yes  
Finished: Yes  
Enclosed: Yes  
Contiguous: Yes  
Permitted: Yes  
Wet space: No  
Addition: No  
Conversion: No

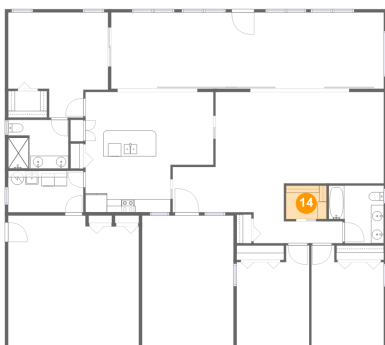
### 13 Floor 1 - Bedroom



Max Dimensions: 11'3" x 15'7"  
Calculated Area: 156 sq. ft  
Included: Yes

Heated: Yes  
Finished: Yes  
Enclosed: Yes  
Contiguous: Yes  
Permitted: Yes  
Wet space: No  
Addition: No  
Conversion: No

### 14 Floor 1 - Storage



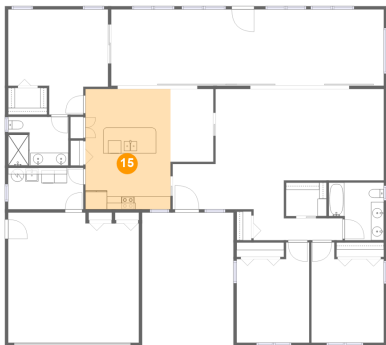
Max Dimensions: 6'4" x 5'3"  
Calculated Area: 33 sq. ft  
Included: No

Heated: No  
Finished: Yes  
Enclosed: No  
Contiguous: Yes  
Permitted: Yes  
Wet space: No  
Addition: No  
Conversion: No



14583 Anchorage Circle, Imperial Point, Seminole, Pinellas  
County, Florida, United States, 33776

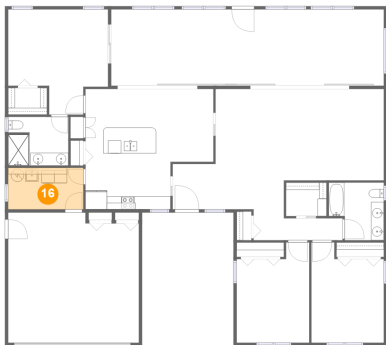
15 Floor 1 - Kitchen



Max Dimensions: 13'2" x 18'8"  
Calculated Area: 247 sq. ft  
Included: Yes

Heated: Yes  
Finished: Yes  
Enclosed: Yes  
Contiguous: Yes  
Permitted: Yes  
Wet space: No  
Addition: No  
Conversion: No

16 Floor 1 - Utility



Max Dimensions: 11'8" x 6'5"  
Calculated Area: 75 sq. ft  
Included: No

Heated: Yes  
Finished: No  
Enclosed: Yes  
Contiguous: Yes  
Permitted: Yes  
Wet space: No  
Addition: No  
Conversion: No