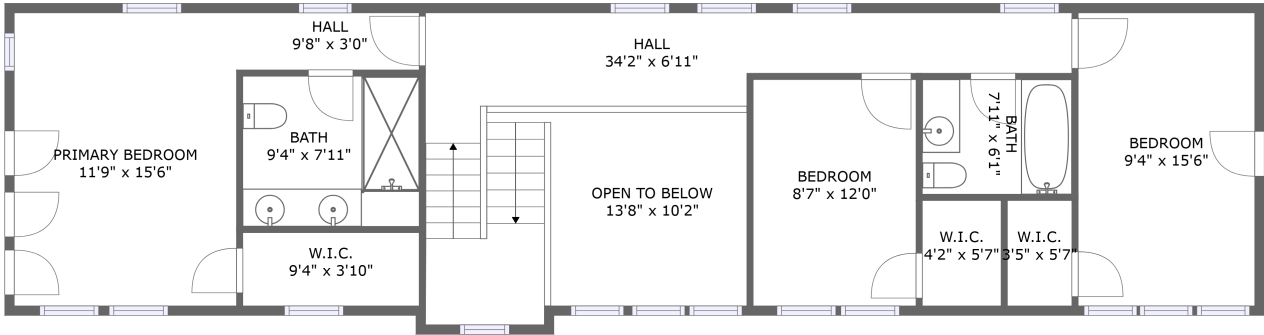
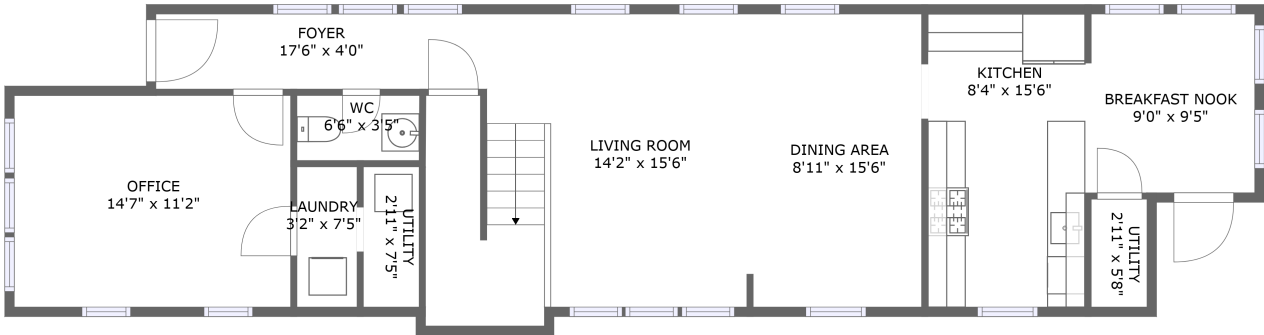


Home report

8316 Southeast 7th Avenue, Sellwood, Portland, Multnomah County, Oregon, United States, 97202



FLOOR 2




FLOOR 1

Property summary

**0** Garages

**3** Bedrooms

**2** Bathrooms

**1** Half baths

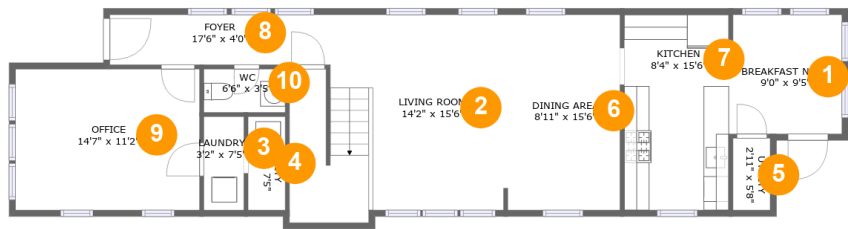
**2** Floors

**2,029** Gross living area sqft

**2,142** Total sqft

Home report

8316 Southeast 7th Avenue, Sellwood, Portland, Multnomah County, Oregon, United States, 97202



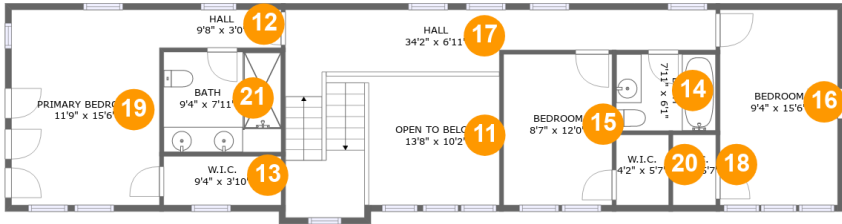
Room dimensions

Floor 1 Total sqft: 1038 Living area: 1038

#		Dimensions	sqft	Counted as living area
1	Breakfast Nook	9'0" x 9'5"	84 sq. ft	Yes
2	Living Room	14'2" x 15'6"	257 sq. ft	Yes
3	Laundry	3'2" x 7'5"	24 sq. ft	Yes
4	Utility	2'11" x 7'5"	22 sq. ft	Yes
5	Utility	2'11" x 5'8"	17 sq. ft	Yes
6	Dining Area	8'11" x 15'6"	138 sq. ft	Yes
7	Kitchen	8'4" x 15'6"	128 sq. ft	Yes
8	Foyer	17'6" x 4'0"	69 sq. ft	Yes
9	Office	14'7" x 11'2"	163 sq. ft	Yes
10	WC	6'6" x 3'5"	22 sq. ft	Yes

Home report

8316 Southeast 7th Avenue, Sellwood, Portland, Multnomah County, Oregon, United States, 97202



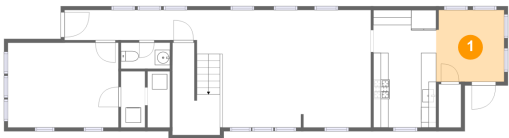
Room dimensions

Floor 2 Total sqft: 1104 Living area: 991

#		Dimensions	sqft	Counted as living area
11	Open To Below	13'8" x 10'2"	108 sq. ft	No
12	Hall	9'8" x 3'0"	29 sq. ft	Yes
13	W.I.C.	9'4" x 3'10"	36 sq. ft	Yes
14	Bath	7'11" x 6'1"	48 sq. ft	Yes
15	Bedroom	8'7" x 12'0"	103 sq. ft	Yes
16	Bedroom	9'4" x 15'6"	144 sq. ft	Yes
17	Hall	34'2" x 6'11"	216 sq. ft	Yes
18	W.I.C.	3'5" x 5'7"	19 sq. ft	Yes
19	Primary Bedroom	11'9" x 15'6"	182 sq. ft	Yes
20	W.I.C.	4'2" x 5'7"	23 sq. ft	Yes
21	Bath	9'4" x 7'11"	74 sq. ft	Yes

8316 Southeast 7th Avenue, Sellwood, Portland, Multnomah
County, Oregon, United States, 97202

1 Floor 1 - Breakfast Nook



Dimensions: 9'0" x 9'5"
Area: 84 sq. ft
Counted as living area: Yes

Heated: Yes
Finished: Yes
Enclosed: Yes
Contiguous: Yes
Permitted: Yes
Wet space: No
Addition: No
Conversion: No

2 Floor 1 - Living Room



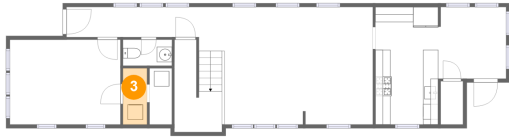
Dimensions: 14'2" x 15'6"
Area: 257 sq. ft
Counted as living area: Yes

Heated: Yes
Finished: Yes
Enclosed: Yes
Contiguous: Yes
Permitted: Yes
Wet space: No
Addition: No
Conversion: No

Home report

8316 Southeast 7th Avenue, Sellwood, Portland, Multnomah County, Oregon, United States, 97202

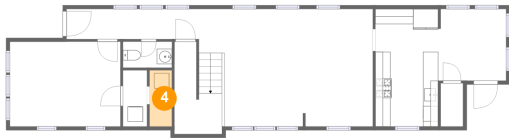
3 Floor 1 - Laundry



Dimensions: 3'2" x 7'5"
Area: 24 sq. ft
Counted as living area: Yes

Heated: Yes
Finished: Yes
Enclosed: Yes
Contiguous: Yes
Permitted: Yes
Wet space: No
Addition: No
Conversion: No

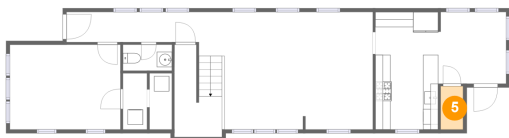
4 Floor 1 - Utility



Dimensions: 2'11" x 7'5"
Area: 22 sq. ft
Counted as living area: Yes

Heated: Yes
Finished: Yes
Enclosed: Yes
Contiguous: Yes
Permitted: Yes
Wet space: No
Addition: No
Conversion: No

5 Floor 1 - Utility

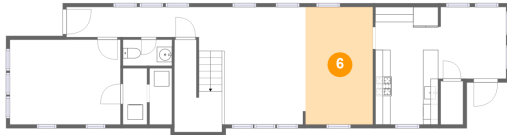


Dimensions: 2'11" x 5'8"
Area: 17 sq. ft
Counted as living area: Yes

Heated: Yes
Finished: Yes
Enclosed: Yes
Contiguous: Yes
Permitted: Yes
Wet space: No
Addition: No
Conversion: No

8316 Southeast 7th Avenue, Sellwood, Portland, Multnomah County, Oregon, United States, 97202

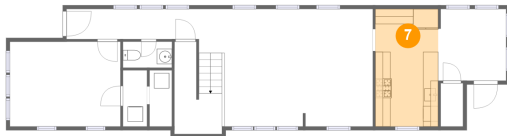
6 Floor 1 - Dining Area



Dimensions: 8'11" x 15'6"
Area: 138 sq. ft
Counted as living area: Yes

Heated: Yes
Finished: Yes
Enclosed: Yes
Contiguous: Yes
Permitted: Yes
Wet space: No
Addition: No
Conversion: No

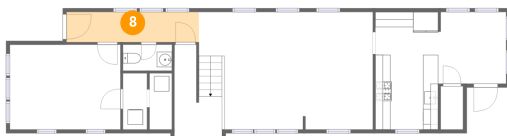
7 Floor 1 - Kitchen



Dimensions: 8'4" x 15'6"
Area: 128 sq. ft
Counted as living area: Yes

Heated: Yes
Finished: Yes
Enclosed: Yes
Contiguous: Yes
Permitted: Yes
Wet space: No
Addition: No
Conversion: No

8 Floor 1 - Foyer



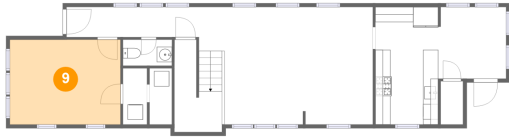
Dimensions: 17'6" x 4'0"
Area: 69 sq. ft
Counted as living area: Yes

Heated: Yes
Finished: Yes
Enclosed: Yes
Contiguous: Yes
Permitted: Yes
Wet space: No
Addition: No
Conversion: No

Home report

8316 Southeast 7th Avenue, Sellwood, Portland, Multnomah County, Oregon, United States, 97202

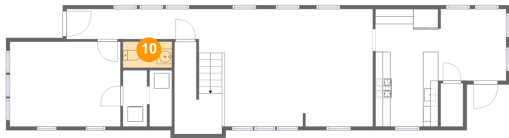
9 Floor 1 - Office



Dimensions: 14'7" x 11'2"
Area: 163 sq. ft
Counted as living area: Yes

Heated: Yes
Finished: Yes
Enclosed: Yes
Contiguous: Yes
Permitted: Yes
Wet space: No
Addition: No
Conversion: No

10 Floor 1 - WC



Dimensions: 6'6" x 3'5"
Area: 22 sq. ft
Counted as living area: Yes

Heated: Yes
Finished: Yes
Enclosed: Yes
Contiguous: Yes
Permitted: Yes
Wet space: Yes
Addition: No
Conversion: No

11 Floor 2 - Open To Below



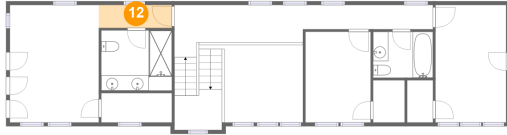
Dimensions: 13'8" x 10'2"
Area: 108 sq. ft
Counted as living area: No

Heated: No
Finished: No
Enclosed: No
Contiguous: Yes
Permitted: No
Wet space: No
Addition: No
Conversion: No

Home report

8316 Southeast 7th Avenue, Sellwood, Portland, Multnomah County, Oregon, United States, 97202

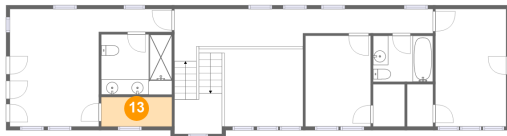
12 Floor 2 - Hall



Dimensions: 9'8" x 3'0"
Area: 29 sq. ft
Counted as living area: Yes

Heated: Yes
Finished: Yes
Enclosed: Yes
Contiguous: Yes
Permitted: Yes
Wet space: No
Addition: No
Conversion: No

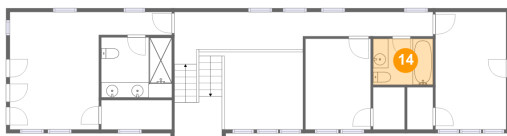
13 Floor 2 - W.I.C.



Dimensions: 9'4" x 3'10"
Area: 36 sq. ft
Counted as living area: Yes

Heated: Yes
Finished: Yes
Enclosed: Yes
Contiguous: Yes
Permitted: Yes
Wet space: No
Addition: No
Conversion: No

14 Floor 2 - Bath



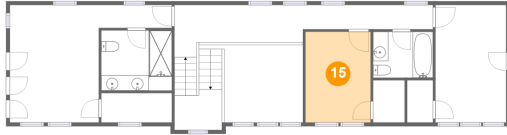
Dimensions: 7'11" x 6'1"
Area: 48 sq. ft
Counted as living area: Yes

Heated: Yes
Finished: Yes
Enclosed: Yes
Contiguous: Yes
Permitted: Yes
Wet space: Yes
Addition: No
Conversion: No

Home report

8316 Southeast 7th Avenue, Sellwood, Portland, Multnomah County, Oregon, United States, 97202

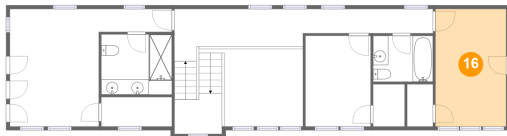
15 Floor 2 - Bedroom



Dimensions: 8'7" x 12'0"
Area: 103 sq. ft
Counted as living area: Yes

Heated: Yes
Finished: Yes
Enclosed: Yes
Contiguous: Yes
Permitted: Yes
Wet space: No
Addition: No
Conversion: No

16 Floor 2 - Bedroom



Dimensions: 9'4" x 15'6"
Area: 144 sq. ft
Counted as living area: Yes

Heated: Yes
Finished: Yes
Enclosed: Yes
Contiguous: Yes
Permitted: Yes
Wet space: No
Addition: No
Conversion: No

17 Floor 2 - Hall



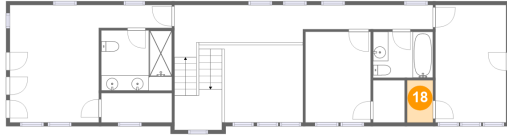
Dimensions: 34'2" x 6'11"
Area: 216 sq. ft
Counted as living area: Yes

Heated: Yes
Finished: Yes
Enclosed: Yes
Contiguous: Yes
Permitted: Yes
Wet space: No
Addition: No
Conversion: No

Home report

8316 Southeast 7th Avenue, Sellwood, Portland, Multnomah County, Oregon, United States, 97202

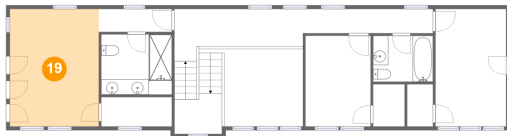
18 Floor 2 - W.I.C.



Dimensions: 3'5" x 5'7"
Area: 19 sq. ft
Counted as living area: Yes

Heated: Yes
Finished: Yes
Enclosed: Yes
Contiguous: Yes
Permitted: Yes
Wet space: No
Addition: No
Conversion: No

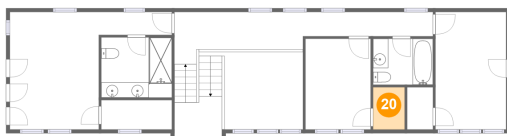
19 Floor 2 - Primary Bedroom



Dimensions: 11'9" x 15'6"
Area: 182 sq. ft
Counted as living area: Yes

Heated: Yes
Finished: Yes
Enclosed: Yes
Contiguous: Yes
Permitted: Yes
Wet space: No
Addition: No
Conversion: No

20 Floor 2 - W.I.C.

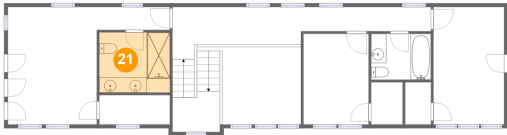


Dimensions: 4'2" x 5'7"
Area: 23 sq. ft
Counted as living area: Yes

Heated: Yes
Finished: Yes
Enclosed: Yes
Contiguous: Yes
Permitted: Yes
Wet space: No
Addition: No
Conversion: No

8316 Southeast 7th Avenue, Sellwood, Portland, Multnomah
County, Oregon, United States, 97202

21 Floor 2 - Bath



Dimensions: 9'4" x 7'11"
Area: 74 sq. ft
Counted as living area: Yes

Heated: Yes
Finished: Yes
Enclosed: Yes
Contiguous: Yes
Permitted: Yes
Wet space: Yes
Addition: No
Conversion: No