

Home report

3153 Shorthorn Drive Southwest, Nottingham Heights, Cave Spring, Roanoke, Roanoke County, Virginia, United States,



Total Area: 1718 sq. ft

Floor 1: 646 sq. ft, Floor 2: 518 sq. ft, Floor 3: 554 sq. ft

Excluded: Utility 34 sq. ft, Fireplace 12 sq. ft, Screened porch 222 sq. ft, Porch 22 sq. ft, Patio 870 sq. ft, Shed 74 sq. ft, Walls: 198 sq. ft

Property summary

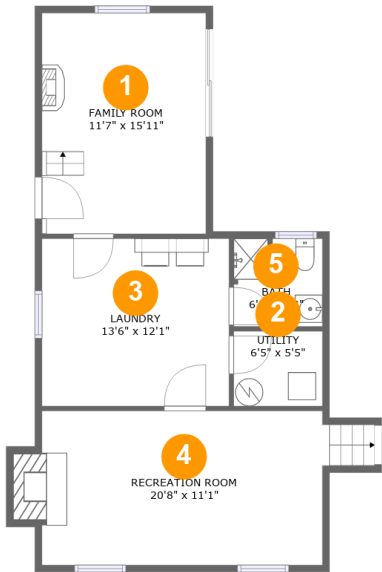
 **3** Floors

 **3** Bedrooms

 **2** Bathrooms

Home report

3153 Shorthorn Drive Southwest, Nottingham Heights, Cave Spring, Roanoke, Roanoke County, Virginia, United States,



Room dimensions

Floor 1 Total:646sqft    Excluded: 46sqft

| # |                 | Max Dimensions | sqft       | Included |
|---|-----------------|----------------|------------|----------|
| 1 | Family Room     | 11'7" x 15'11" | 188 sq. ft | Yes      |
| 2 | Utility         | 6'5" x 5'5"    | 34 sq. ft  | No       |
| 3 | Laundry         | 13'6" x 12'1"  | 163 sq. ft | Yes      |
| 4 | Recreation Room | 20'8" x 11'1"  | 245 sq. ft | Yes      |
| 5 | Bath            | 6'5" x 6'4"    | 39 sq. ft  | Yes      |

Home report

3153 Shorthorn Drive Southwest, Nottingham Heights, Cave Spring, Roanoke, Roanoke County, Virginia, United States,

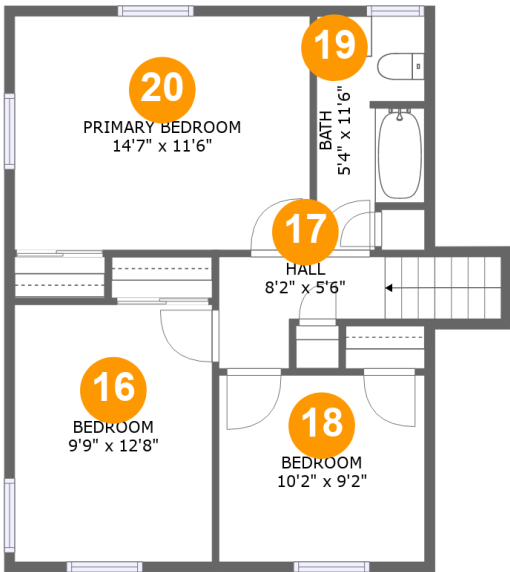


Room dimensions

Floor 2 Total:518sqft   Excluded: 1188sqft

| #  |                | Max Dimensions | sqft        | Included |
|----|----------------|----------------|-------------|----------|
| 6  | Kitchen        | 11'8" x 9'8"   | 112 sq. ft  | Yes      |
| 7  | Porch          | 5'0" x 4'5"    | 22 sq. ft   | No       |
| 8  | Swimming Pool  | 16'1" x 31'6"  | 509 sq. ft  | No       |
| 9  | Shed           | 9'7" x 7'9"    | 74 sq. ft   | No       |
| 10 | Patio          | 25'5" x 42'5"  | 1081 sq. ft | No       |
| 11 | Dining Room    | 10'1" x 9'7"   | 97 sq. ft   | Yes      |
| 12 | Patio          | 17'11" x 16'7" | 298 sq. ft  | No       |
| 13 | Screened Porch | 11'10" x 18'8" | 222 sq. ft  | No       |
| 14 | Living Room    | 19'6" x 13'6"  | 280 sq. ft  | Yes      |
| 15 | Yard           | 25'6" x 5'9"   | 149 sq. ft  | No       |

3153 Shorthorn Drive Southwest, Nottingham Heights, Cave Spring, Roanoke, Roanoke County, Virginia, United States,



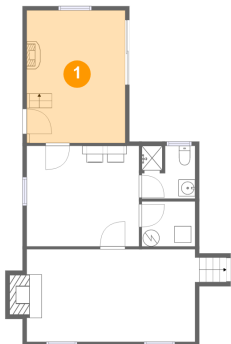
Room dimensions

Floor 3 Total:554sqft   Excluded: 0sqft

| #  |                 | Max Dimensions | sqft       | Included |
|----|-----------------|----------------|------------|----------|
| 16 | Bedroom         | 9'9" x 12'8"   | 123 sq. ft | Yes      |
| 17 | Hall            | 8'2" x 5'6"    | 51 sq. ft  | Yes      |
| 18 | Bedroom         | 10'2" x 9'2"   | 93 sq. ft  | Yes      |
| 19 | Bath            | 5'4" x 11'6"   | 55 sq. ft  | Yes      |
| 20 | Primary Bedroom | 14'7" x 11'6"  | 168 sq. ft | Yes      |

3153 Shorthorn Drive Southwest, Nottingham Heights, Cave Spring, Roanoke, Roanoke County, Virginia, United States,

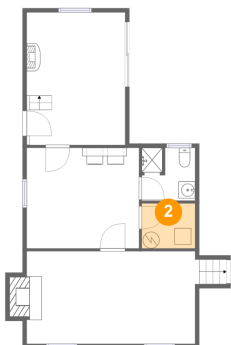
1 Floor 1 - Family Room



Max Dimensions: 11'7" x 15'11"  
Calculated Area: 188 sq. ft  
Included: Yes

Heated: Yes  
Finished: Yes  
Enclosed: Yes  
Contiguous: Yes  
Permitted: Yes  
Wet space: No  
Addition: No  
Conversion: No

2 Floor 1 - Utility



Max Dimensions: 6'5" x 5'5"  
Calculated Area: 34 sq. ft  
Included: No

Heated: Yes  
Finished: No  
Enclosed: Yes  
Contiguous: Yes  
Permitted: Yes  
Wet space: No  
Addition: No  
Conversion: No

3153 Shorthorn Drive Southwest, Nottingham Heights, Cave Spring, Roanoke, Roanoke County, Virginia, United States,

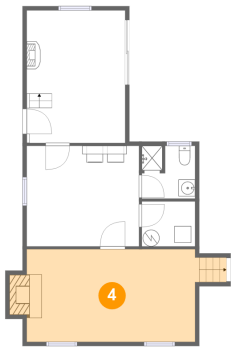
3 Floor 1 - Laundry



Max Dimensions: 13'6" x 12'1"  
Calculated Area: 163 sq. ft  
Included: Yes

Heated: Yes  
Finished: Yes  
Enclosed: Yes  
Contiguous: Yes  
Permitted: Yes  
Wet space: No  
Addition: No  
Conversion: No

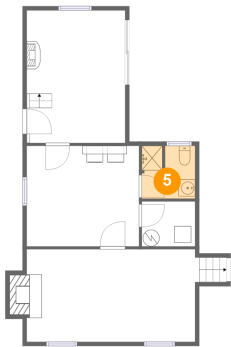
4 Floor 1 - Recreation Room



Max Dimensions: 20'8" x 11'1"  
Calculated Area: 245 sq. ft  
Included: Yes

Heated: Yes  
Finished: Yes  
Enclosed: Yes  
Contiguous: Yes  
Permitted: Yes  
Wet space: No  
Addition: No  
Conversion: No

5 Floor 1 - Bath



Max Dimensions: 6'5" x 6'4"  
Calculated Area: 39 sq. ft  
Included: Yes

Heated: Yes  
Finished: Yes  
Enclosed: Yes  
Contiguous: Yes  
Permitted: Yes  
Wet space: Yes  
Addition: No  
Conversion: No

3153 Shorthorn Drive Southwest, Nottingham Heights, Cave Spring, Roanoke, Roanoke County, Virginia, United States,

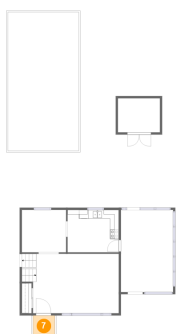
6 Floor 2 - Kitchen



Max Dimensions: 11'8" x 9'8"  
Calculated Area: 112 sq. ft  
Included: Yes

Heated: Yes  
Finished: Yes  
Enclosed: Yes  
Contiguous: Yes  
Permitted: Yes  
Wet space: No  
Addition: No  
Conversion: No

7 Floor 2 - Porch



Max Dimensions: 5'0" x 4'5"  
Calculated Area: 22 sq. ft  
Included: No

Heated: No  
Finished: Yes  
Enclosed: No  
Contiguous: Yes  
Permitted: Yes  
Wet space: No  
Addition: No  
Conversion: No

8 Floor 2 - Swimming Pool



Max Dimensions: 16'1" x 31'6"  
Calculated Area: 509 sq. ft  
Included: No

Heated: No  
Finished: No  
Enclosed: No  
Contiguous: Yes  
Permitted: No  
Wet space: No  
Addition: No  
Conversion: No

3153 Shorthorn Drive Southwest, Nottingham Heights, Cave Spring, Roanoke, Roanoke County, Virginia, United States,

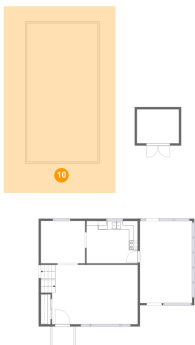
9 Floor 2 - Shed



Max Dimensions: 9'7" x 7'9"  
Calculated Area: 74 sq. ft  
Included: No

Heated: No  
Finished: No  
Enclosed: No  
Contiguous: Yes  
Permitted: Yes  
Wet space: No  
Addition: No  
Conversion: No

10 Floor 2 - Patio



Max Dimensions: 25'5" x 42'5"  
Calculated Area: 1081 sq. ft  
Included: No

Heated: No  
Finished: Yes  
Enclosed: No  
Contiguous: Yes  
Permitted: Yes  
Wet space: No  
Addition: No  
Conversion: No

11 Floor 2 - Dining Room



Max Dimensions: 10'1" x 9'7"  
Calculated Area: 97 sq. ft  
Included: Yes

Heated: Yes  
Finished: Yes  
Enclosed: Yes  
Contiguous: Yes  
Permitted: Yes  
Wet space: No  
Addition: No  
Conversion: No



3153 Shorthorn Drive Southwest, Nottingham Heights, Cave Spring, Roanoke, Roanoke County, Virginia, United States,

12 Floor 2 - Patio



Max Dimensions: 17'11" x 16'7"  
Calculated Area: 298 sq. ft  
Included: No

Heated: No  
Finished: Yes  
Enclosed: No  
Contiguous: Yes  
Permitted: Yes  
Wet space: No  
Addition: No  
Conversion: No

13 Floor 2 - Screened Porch



Max Dimensions: 11'10" x 18'8"  
Calculated Area: 222 sq. ft  
Included: No

Heated: No  
Finished: Yes  
Enclosed: No  
Contiguous: Yes  
Permitted: Yes  
Wet space: No  
Addition: No  
Conversion: No

14 Floor 2 - Living Room

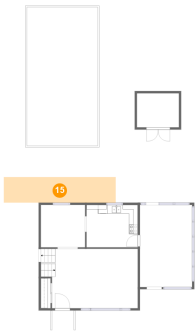


Max Dimensions: 19'6" x 13'6"  
Calculated Area: 280 sq. ft  
Included: Yes

Heated: Yes  
Finished: Yes  
Enclosed: Yes  
Contiguous: Yes  
Permitted: Yes  
Wet space: No  
Addition: No  
Conversion: No

3153 Shorthorn Drive Southwest, Nottingham Heights, Cave Spring, Roanoke, Roanoke County, Virginia, United States,

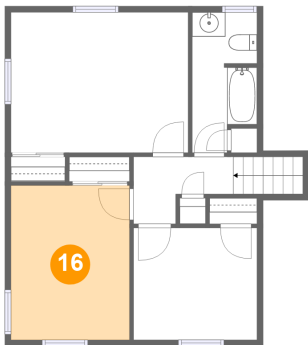
15 Floor 2 - Yard



Max Dimensions: 25'6" x 5'9"  
Calculated Area: 149 sq. ft  
Included: No

Heated: No  
Finished: No  
Enclosed: No  
Contiguous: Yes  
Permitted: No  
Wet space: No  
Addition: No  
Conversion: No

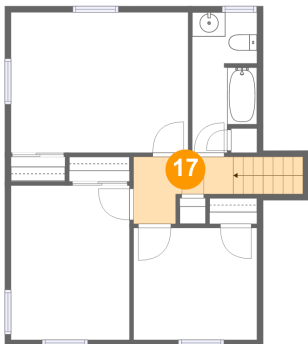
16 Floor 3 - Bedroom



Max Dimensions: 9'9" x 12'8"  
Calculated Area: 123 sq. ft  
Included: Yes

Heated: Yes  
Finished: Yes  
Enclosed: Yes  
Contiguous: Yes  
Permitted: Yes  
Wet space: No  
Addition: No  
Conversion: No

17 Floor 3 - Hall

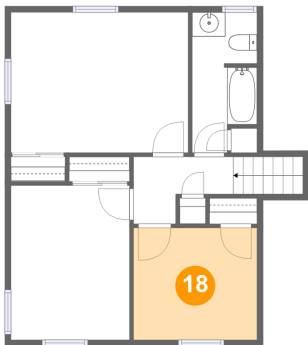


Max Dimensions: 8'2" x 5'6"  
Calculated Area: 51 sq. ft  
Included: Yes

Heated: Yes  
Finished: Yes  
Enclosed: Yes  
Contiguous: Yes  
Permitted: Yes  
Wet space: No  
Addition: No  
Conversion: No

3153 Shorthorn Drive Southwest, Nottingham Heights, Cave Spring, Roanoke, Roanoke County, Virginia, United States,

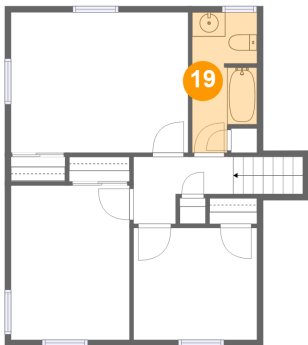
18 Floor 3 - Bedroom



Max Dimensions: 10'2" x 9'2"  
Calculated Area: 93 sq. ft  
Included: Yes

Heated: Yes  
Finished: Yes  
Enclosed: Yes  
Contiguous: Yes  
Permitted: Yes  
Wet space: No  
Addition: No  
Conversion: No

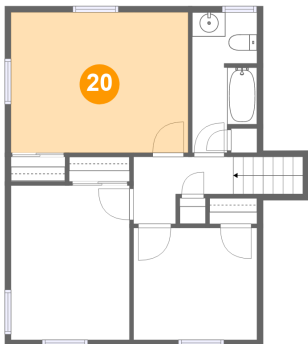
19 Floor 3 - Bath



Max Dimensions: 5'4" x 11'6"  
Calculated Area: 55 sq. ft  
Included: Yes

Heated: Yes  
Finished: Yes  
Enclosed: Yes  
Contiguous: Yes  
Permitted: Yes  
Wet space: Yes  
Addition: No  
Conversion: No

20 Floor 3 - Primary Bedroom



Max Dimensions: 14'7" x 11'6"  
Calculated Area: 168 sq. ft  
Included: Yes

Heated: Yes  
Finished: Yes  
Enclosed: Yes  
Contiguous: Yes  
Permitted: Yes  
Wet space: No  
Addition: No  
Conversion: No