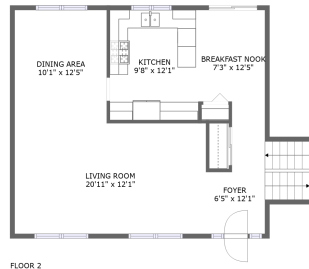


1241 Hialeah Ln, Hanover Park, IL, US



FLOOR 2




FLOOR 1

FLOOR 3

Property summary


 **1** Garages

 **4** Bedrooms

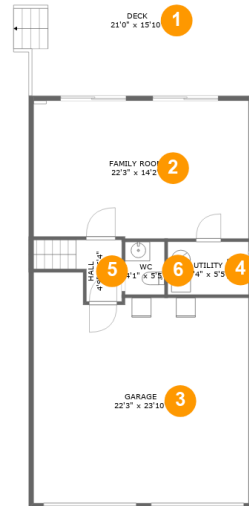
 **2** Bathrooms

 **1** Half baths

 **3** Floors

 **2,218** Gross living area sqft

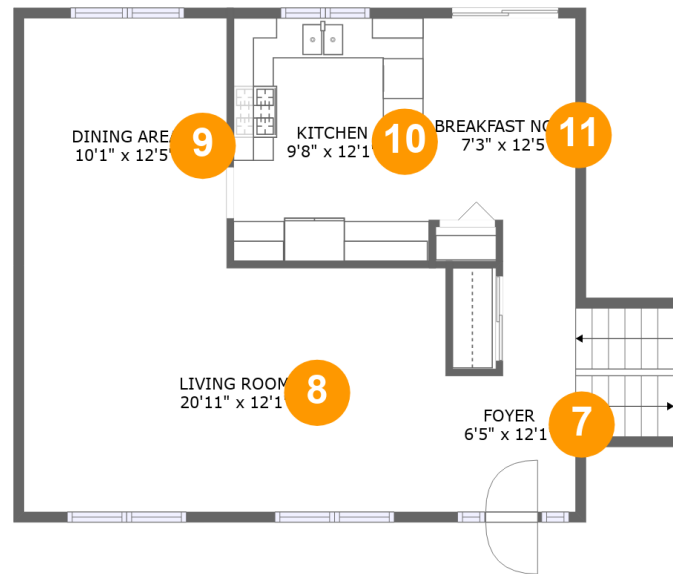
 **3,055** Total sqft

1241 Hialeah Ln, Hanover Park, IL, US**Room dimensions**

Floor 1

Total sqft: 1309 Living area: 472

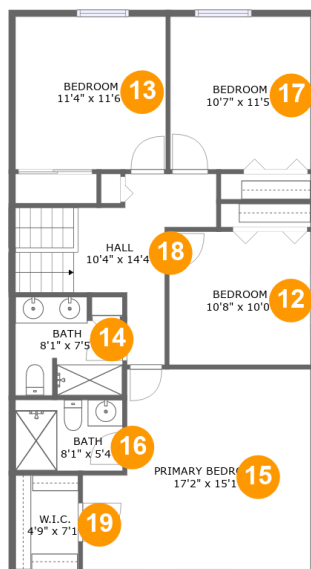
#		Dimensions	sqft	Counted as living area
1	Deck	21'0" x 15'10"	322 sq. ft	No
2	Family Room	22'3" x 14'2"	314 sq. ft	Yes
3	Garage	22'3" x 23'10"	481 sq. ft	No
4	Utility	8'4" x 5'5"	46 sq. ft	Yes
5	Hall	4'9" x 6'4"	40 sq. ft	Yes
6	WC	4'1" x 5'5"	22 sq. ft	Yes

1241 Hialeah Ln, Hanover Park, IL, US**Room dimensions**

Floor 2

Total sqft: 758 Living area: 758

#		Dimensions	sqft	Counted as living area
7	Foyer	6'5" x 12'1"	94 sq. ft	Yes
8	Living Room	20'11" x 12'1"	253 sq. ft	Yes
9	Dining Area	10'1" x 12'5"	125 sq. ft	Yes
10	Kitchen	9'8" x 12'1"	117 sq. ft	Yes
11	Breakfast Nook	7'3" x 12'5"	81 sq. ft	Yes

1241 Hialeah Ln, Hanover Park, IL, US**Room dimensions**

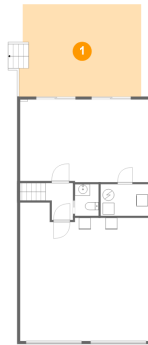
Floor 3

Total sqft: 988 Living area: 988

#		Dimensions	sqft	Counted as living area
12	Bedroom	10'8" x 10'0"	107 sq. ft	Yes
13	Bedroom	11'4" x 11'6"	130 sq. ft	Yes
14	Bath	8'1" x 7'5"	54 sq. ft	Yes
15	Primary Bedroom	17'2" x 15'1"	231 sq. ft	Yes
16	Bath	8'1" x 5'4"	43 sq. ft	Yes
17	Bedroom	10'7" x 11'5"	121 sq. ft	Yes
18	Hall	10'4" x 14'4"	110 sq. ft	Yes
19	W.I.C.	4'9" x 7'1"	33 sq. ft	Yes

1241 Hialeah Ln, Hanover Park, IL, US

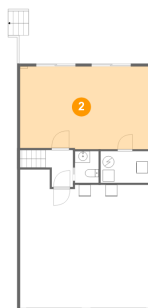
1 Floor 1 - Deck



Dimensions: 21'0" x 15'10"
Area: 322 sq. ft
Counted as living area: No

Heated: No
Finished: Yes
Enclosed: No
Contiguous: Yes
Permitted: Yes
Wet space: No
Addition: No
Conversion: No

2 Floor 1 - Family Room

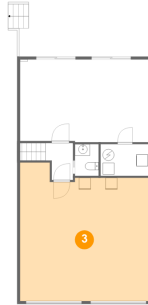


Dimensions: 22'3" x 14'2"
Area: 314 sq. ft
Counted as living area: Yes

Heated: Yes
Finished: Yes
Enclosed: Yes
Contiguous: Yes
Permitted: Yes
Wet space: No
Addition: No
Conversion: No

1241 Hialeah Ln, Hanover Park, IL, US

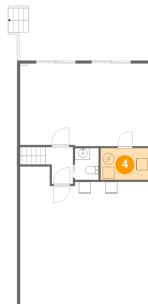
3 Floor 1 - Garage



Dimensions: 22'3" x 23'10"
Area: 481 sq. ft
Counted as living area: No

Heated: No
Finished: No
Enclosed: Yes
Contiguous: Yes
Permitted: Yes
Wet space: No
Addition: No
Conversion: No

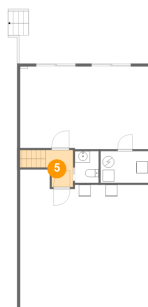
4 Floor 1 - Utility



Dimensions: 8'4" x 5'5"
Area: 46 sq. ft
Counted as living area: Yes

Heated: Yes
Finished: Yes
Enclosed: Yes
Contiguous: Yes
Permitted: Yes
Wet space: No
Addition: No
Conversion: No

5 Floor 1 - Hall

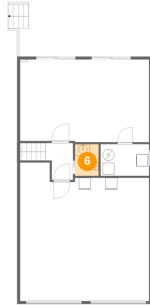


Dimensions: 4'9" x 6'4"
Area: 40 sq. ft
Counted as living area: Yes

Heated: Yes
Finished: Yes
Enclosed: Yes
Contiguous: Yes
Permitted: Yes
Wet space: No
Addition: No
Conversion: No

1241 Hialeah Ln, Hanover Park, IL, US

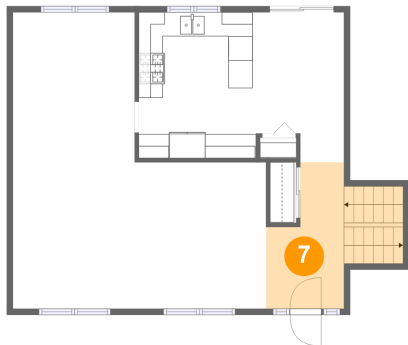
6 Floor 1 - WC



Dimensions: 4'1" x 5'5"
Area: 22 sq. ft
Counted as living area: Yes

Heated: Yes
Finished: Yes
Enclosed: Yes
Contiguous: Yes
Permitted: Yes
Wet space: Yes
Addition: No
Conversion: No

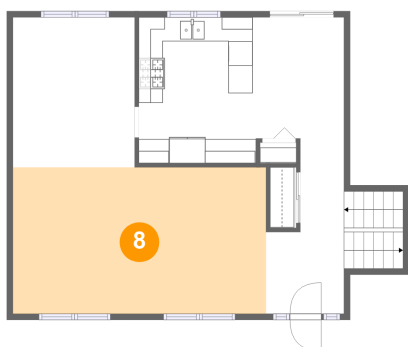
7 Floor 2 - Foyer



Dimensions: 6'5" x 12'1"
Area: 94 sq. ft
Counted as living area: Yes

Heated: Yes
Finished: Yes
Enclosed: Yes
Contiguous: Yes
Permitted: Yes
Wet space: No
Addition: No
Conversion: No

8 Floor 2 - Living Room

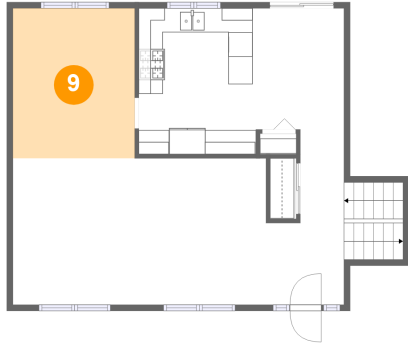


Dimensions: 20'11" x 12'1"
Area: 253 sq. ft
Counted as living area: Yes

Heated: Yes
Finished: Yes
Enclosed: Yes
Contiguous: Yes
Permitted: Yes
Wet space: No
Addition: No
Conversion: No

1241 Hialeah Ln, Hanover Park, IL, US

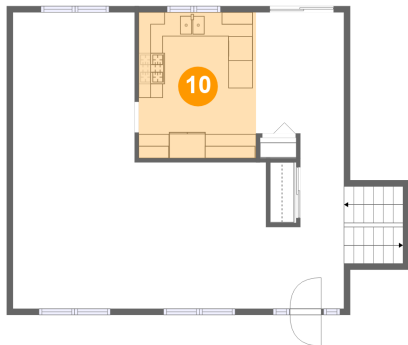
9 Floor 2 - Dining Area



Dimensions: 10'1" x 12'5"
Area: 125 sq. ft
Counted as living area: Yes

Heated: Yes
Finished: Yes
Enclosed: Yes
Contiguous: Yes
Permitted: Yes
Wet space: No
Addition: No
Conversion: No

10 Floor 2 - Kitchen



Dimensions: 9'8" x 12'1"
Area: 117 sq. ft
Counted as living area: Yes

Heated: Yes
Finished: Yes
Enclosed: Yes
Contiguous: Yes
Permitted: Yes
Wet space: No
Addition: No
Conversion: No

11 Floor 2 - Breakfast Nook

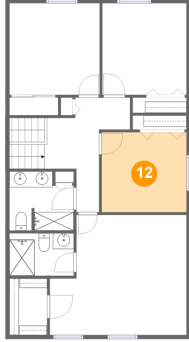


Dimensions: 7'3" x 12'5"
Area: 81 sq. ft
Counted as living area: Yes

Heated: Yes
Finished: Yes
Enclosed: Yes
Contiguous: Yes
Permitted: Yes
Wet space: No
Addition: No
Conversion: No

1241 Hialeah Ln, Hanover Park, IL, US

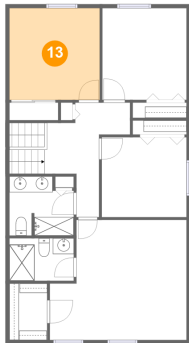
12 Floor 3 - Bedroom



Dimensions: 10'8" x 10'0"
Area: 107 sq. ft
Counted as living area: Yes

Heated: Yes
Finished: Yes
Enclosed: Yes
Contiguous: Yes
Permitted: Yes
Wet space: No
Addition: No
Conversion: No

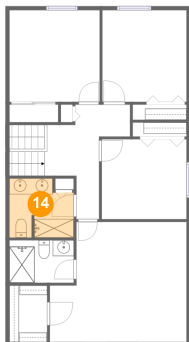
13 Floor 3 - Bedroom



Dimensions: 11'4" x 11'6"
Area: 130 sq. ft
Counted as living area: Yes

Heated: Yes
Finished: Yes
Enclosed: Yes
Contiguous: Yes
Permitted: Yes
Wet space: No
Addition: No
Conversion: No

14 Floor 3 - Bath

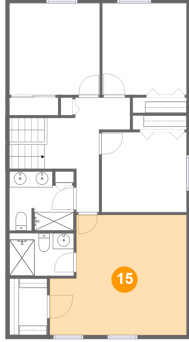


Dimensions: 8'1" x 7'5"
Area: 54 sq. ft
Counted as living area: Yes

Heated: Yes
Finished: Yes
Enclosed: Yes
Contiguous: Yes
Permitted: Yes
Wet space: Yes
Addition: No
Conversion: No

1241 Hialeah Ln, Hanover Park, IL, US

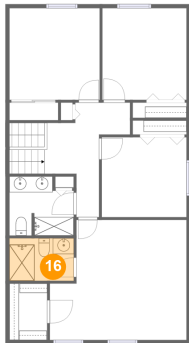
15 Floor 3 - Primary Bedroom



Dimensions: 17'2" x 15'1"
Area: 231 sq. ft
Counted as living area: Yes

Heated: Yes
Finished: Yes
Enclosed: Yes
Contiguous: Yes
Permitted: Yes
Wet space: No
Addition: No
Conversion: No

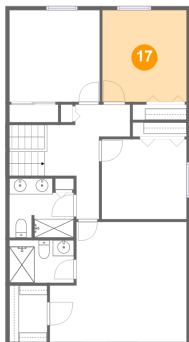
16 Floor 3 - Bath



Dimensions: 8'1" x 5'4"
Area: 43 sq. ft
Counted as living area: Yes

Heated: Yes
Finished: Yes
Enclosed: Yes
Contiguous: Yes
Permitted: Yes
Wet space: Yes
Addition: No
Conversion: No

17 Floor 3 - Bedroom

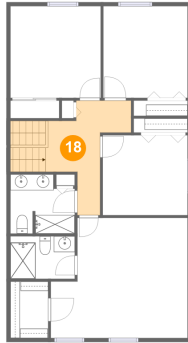


Dimensions: 10'7" x 11'5"
Area: 121 sq. ft
Counted as living area: Yes

Heated: Yes
Finished: Yes
Enclosed: Yes
Contiguous: Yes
Permitted: Yes
Wet space: No
Addition: No
Conversion: No

1241 Hialeah Ln, Hanover Park, IL, US

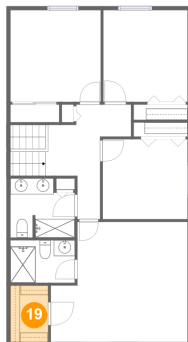
18 Floor 3 - Hall



Dimensions: 10'4" x 14'4"
Area: 110 sq. ft
Counted as living area: Yes

Heated: Yes
Finished: Yes
Enclosed: Yes
Contiguous: Yes
Permitted: Yes
Wet space: No
Addition: No
Conversion: No

19 Floor 3 - W.I.C.



Dimensions: 4'9" x 7'1"
Area: 33 sq. ft
Counted as living area: Yes

Heated: Yes
Finished: Yes
Enclosed: Yes
Contiguous: Yes
Permitted: Yes
Wet space: No
Addition: No
Conversion: No