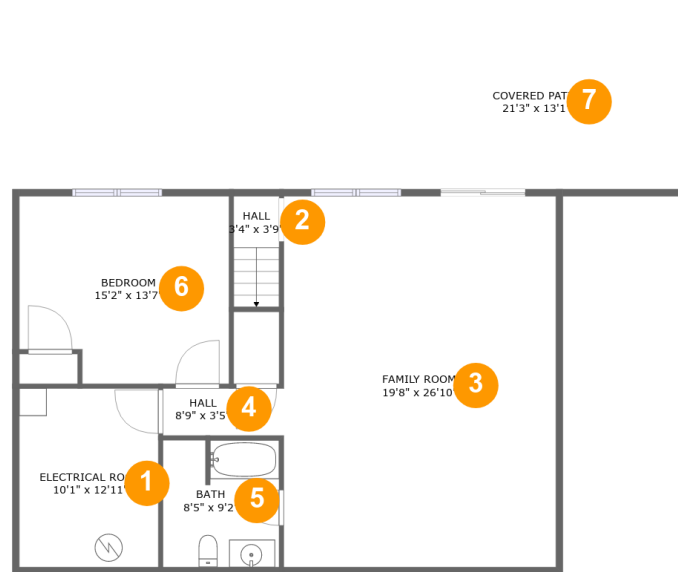


310 Creighton Drive, Rocky Mount, Franklin County, Virginia, United States, 24151



Room Dimensions

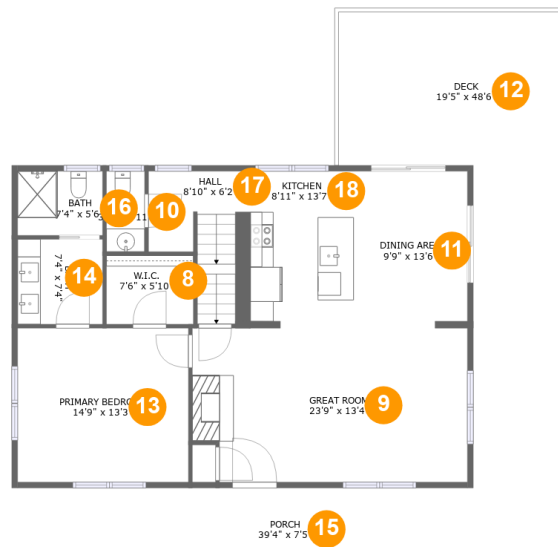
Floor 1

Total sqft: 1387

Living area: 854

#	Room name	Dimensions	Area (sqft)	Counted as Living Area
1	Electrical Room	10'1" x 12'11"	130 sq. ft	No
2	Hall	3'4" x 3'9"	26 sq. ft	No
3	Family Room	19'8" x 26'10"	529 sq. ft	Yes
4	Hall	8'9" x 3'5"	30 sq. ft	Yes
5	Bath	8'5" x 9'2"	76 sq. ft	No
6	Bedroom	15'2" x 13'7"	195 sq. ft	Yes
7	Covered Patio	21'3" x 13'1"	278 sq. ft	No

310 Creighton Drive, Rocky Mount, Franklin County, Virginia, United States, 24151



Room Dimensions

Floor 2

Total sqft: 1937

Living area: 1109

#	Room name	Dimensions	Area (sqft)	Counted as Living Area
8	W.i.c.	7'6" x 5'10"	44 sq. ft	Yes
9	Great Room	23'9" x 13'4"	307 sq. ft	Yes
10	Wc	3'4" x 6'11"	23 sq. ft	Yes
11	Dining Area	9'9" x 13'6"	131 sq. ft	Yes
12	Deck	19'5" x 48'6"	536 sq. ft	No
13	Primary Bedroom	14'9" x 13'3"	196 sq. ft	Yes
14	Bath	7'4" x 7'4"	54 sq. ft	Yes
15	Porch	39'4" x 7'5"	292 sq. ft	No
16	Bath	7'4" x 5'6"	41 sq. ft	Yes
17	Hall	8'10" x 6'2"	76 sq. ft	Yes
18	Kitchen	8'11" x 13'7"	120 sq. ft	Yes

Scan captured on Tue, 25 Jun 2024 23:16:40 GMT

Information is calculated by CubiCasa technology; deemed highly reliable but not guaranteed.

310 Creighton Drive, Rocky Mount, Franklin County, Virginia, United States, 24151



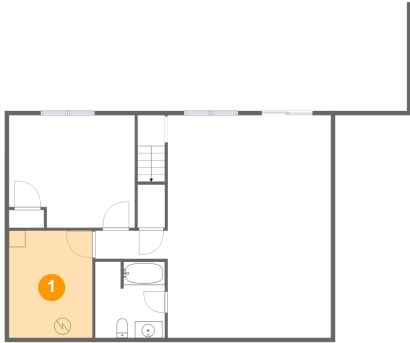
Room Dimensions

Floor 3**Total sqft: 785****Living area: 785**

#	Room name	Dimensions	Area (sqft)	Counted as Living Area
19	Bath	4'10" x 9'5"	45 sq. ft	Yes
20	Bedroom	15'2" x 18'0"	241 sq. ft	Yes
21	Hall	8'5" x 4'8"	66 sq. ft	Yes
22	Bedroom	14'6" x 17'11"	232 sq. ft	Yes

310 Creighton Drive, Rocky Mount, Franklin County, Virginia, United States, 24151

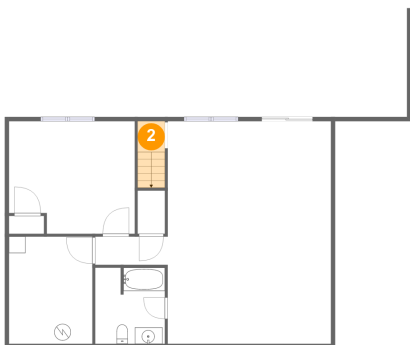
1 Floor 1 - Electrical Room



Dimensions: 10'1" x 12'11"
Area: 130 sq. ft
Counted as Living Area: No

Heated: No
Finished: No
Enclosed: Yes
Contiguous: Yes
Permitted: Yes
Wet Space: No
Addition: No
Conversion: No

2 Floor 1 - Hall



Dimensions: 3'4" x 3'9"
Area: 26 sq. ft
Counted as Living Area: No

Heated: Yes
Finished: Yes
Enclosed: Yes
Contiguous: No
Permitted: Yes
Wet Space: No
Addition: No
Conversion: No

310 Creighton Drive, Rocky Mount, Franklin County, Virginia, United States, 24151

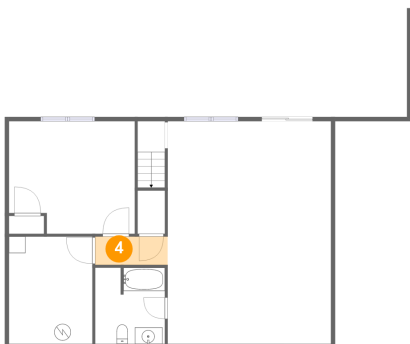
3 Floor 1 - Family Room



Dimensions: 19'8" x 26'10"
Area: 529 sq. ft
Counted as Living Area:
Yes

Heated: Yes
Finished: Yes
Enclosed: Yes
Contiguous:
Yes
Permitted: Yes
Wet Space: No
Addition: No
Conversion: No

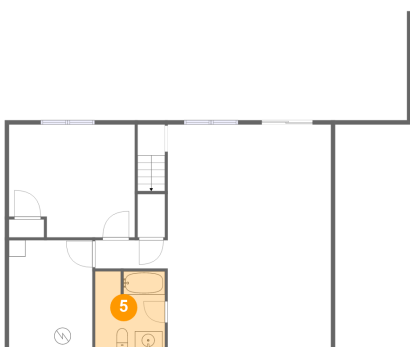
4 Floor 1 - Hall



Dimensions: 8'9" x 3'5"
Area: 30 sq. ft
Counted as Living Area:
Yes

Heated: Yes
Finished: Yes
Enclosed: Yes
Contiguous:
Yes
Permitted: Yes
Wet Space: No
Addition: No
Conversion: No

5 Floor 1 - Bath

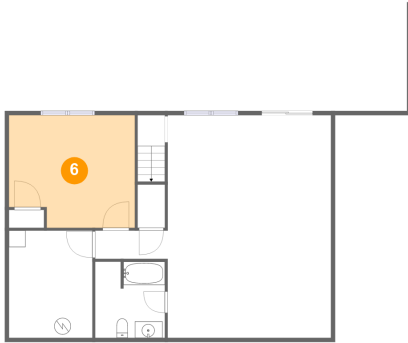


Dimensions: 8'5" x 9'2"
Area: 76 sq. ft
Counted as Living Area: No

Heated: Yes
Finished: Yes
Enclosed: Yes
Contiguous: No
Permitted: Yes
Wet Space: Yes
Addition: No
Conversion: No

310 Creighton Drive, Rocky Mount, Franklin County, Virginia, United States, 24151

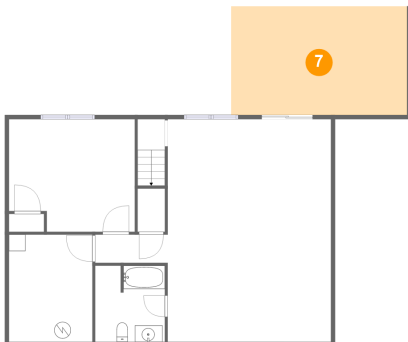
6 Floor 1 - Bedroom



Dimensions: 15'2" x 13'7"
Area: 195 sq. ft
Counted as Living Area: Yes

Heated: Yes
Finished: Yes
Enclosed: Yes
Contiguous: Yes
Permitted: Yes
Wet Space: No
Addition: No
Conversion: No

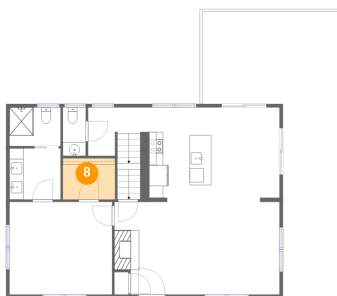
7 Floor 1 - Covered Patio



Dimensions: 21'3" x 13'1"
Area: 278 sq. ft
Counted as Living Area: No

Heated: No
Finished: Yes
Enclosed: No
Contiguous: Yes
Permitted: Yes
Wet Space: No
Addition: No
Conversion: No

8 Floor 2 - W.i.c.



Dimensions: 7'6" x 5'10"
Area: 44 sq. ft
Counted as Living Area: Yes

Heated: Yes
Finished: Yes
Enclosed: Yes
Contiguous: Yes
Permitted: Yes
Wet Space: No
Addition: No
Conversion: No

310 Creighton Drive, Rocky Mount, Franklin County, Virginia, United States, 24151

9 Floor 2 - Great Room



Dimensions: 23'9" x 13'4"
Area: 307 sq. ft
Counted as Living Area:
Yes

Heated: Yes
Finished: Yes
Enclosed: Yes
Contiguous:
Yes
Permitted: Yes
Wet Space: No
Addition: No
Conversion: No

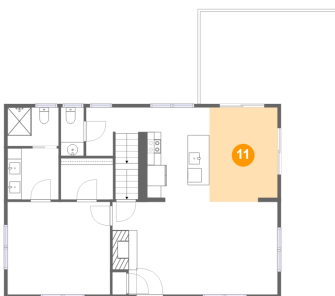
10 Floor 2 - Wc



Dimensions: 3'4" x 6'11"
Area: 23 sq. ft
Counted as Living Area:
Yes

Heated: Yes
Finished: Yes
Enclosed: Yes
Contiguous:
Yes
Permitted: Yes
Wet Space: Yes
Addition: No
Conversion: No

11 Floor 2 - Dining Area

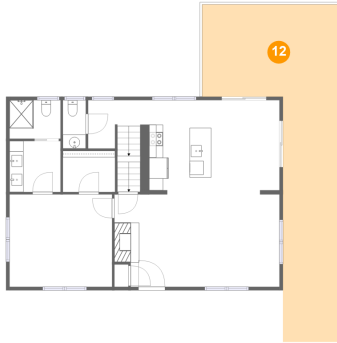


Dimensions: 9'9" x 13'6"
Area: 131 sq. ft
Counted as Living Area:
Yes

Heated: Yes
Finished: Yes
Enclosed: Yes
Contiguous:
Yes
Permitted: Yes
Wet Space: No
Addition: No
Conversion: No

310 Creighton Drive, Rocky Mount, Franklin County, Virginia, United States, 24151

12 Floor 2 - Deck



Dimensions: 19'5" x 48'6"
Area: 536 sq. ft
Counted as Living Area: No

Heated: No
Finished: Yes
Enclosed: No
Contiguous: Yes
Permitted: Yes
Wet Space: No
Addition: No
Conversion: No

13 Floor 2 - Primary Bedroom



Dimensions: 14'9" x 13'3"
Area: 196 sq. ft
Counted as Living Area: Yes

Heated: Yes
Finished: Yes
Enclosed: Yes
Contiguous: Yes
Permitted: Yes
Wet Space: No
Addition: No
Conversion: No

14 Floor 2 - Bath

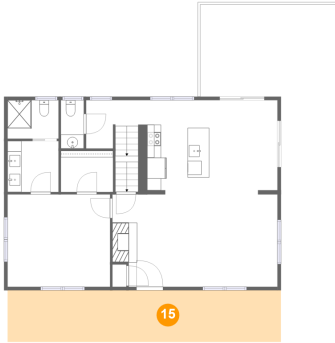


Dimensions: 7'4" x 7'4"
Area: 54 sq. ft
Counted as Living Area: Yes

Heated: Yes
Finished: Yes
Enclosed: Yes
Contiguous: Yes
Permitted: Yes
Wet Space: Yes
Addition: No
Conversion: No

310 Creighton Drive, Rocky Mount, Franklin County, Virginia, United States, 24151

15 Floor 2 - Porch



Dimensions: 39'4" x 7'5"
Area: 292 sq. ft
Counted as Living Area: No

Heated: No
Finished: Yes
Enclosed: No
Contiguous: Yes
Permitted: Yes
Wet Space: No
Addition: No
Conversion: No

16 Floor 2 - Bath



Dimensions: 7'4" x 5'6"
Area: 41 sq. ft
Counted as Living Area: Yes

Heated: Yes
Finished: Yes
Enclosed: Yes
Contiguous: Yes
Permitted: Yes
Wet Space: Yes
Addition: No
Conversion: No

17 Floor 2 - Hall



Dimensions: 8'10" x 6'2"
Area: 76 sq. ft
Counted as Living Area: Yes

Heated: Yes
Finished: Yes
Enclosed: Yes
Contiguous: Yes
Permitted: Yes
Wet Space: No
Addition: No
Conversion: No

310 Creighton Drive, Rocky Mount, Franklin County, Virginia, United States, 24151

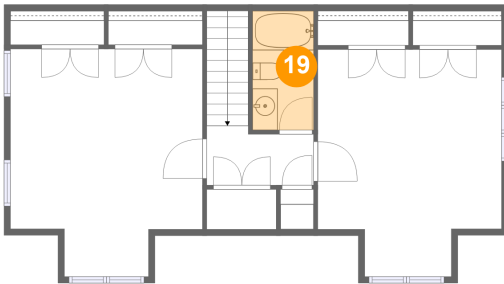
18 Floor 2 - Kitchen



Dimensions: 8'11" x 13'7"
Area: 120 sq. ft
Counted as Living Area:
Yes

Heated: Yes
Finished: Yes
Enclosed: Yes
Contiguous:
Yes
Permitted: Yes
Wet Space: No
Addition: No
Conversion: No

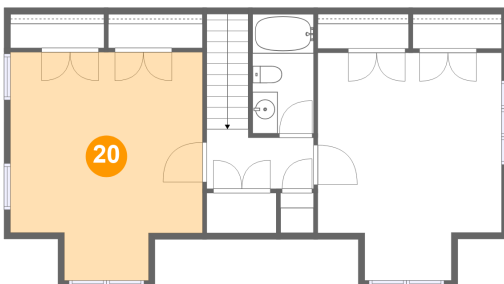
19 Floor 3 - Bath



Dimensions: 4'10" x 9'5"
Area: 45 sq. ft
Counted as Living Area:
Yes

Heated: Yes
Finished: Yes
Enclosed: Yes
Contiguous:
Yes
Permitted: Yes
Wet Space: Yes
Addition: No
Conversion: No

20 Floor 3 - Bedroom

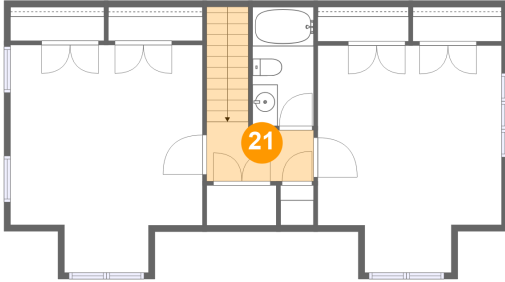


Dimensions: 15'2" x 18'0"
Area: 241 sq. ft
Counted as Living Area:
Yes

Heated: Yes
Finished: Yes
Enclosed: Yes
Contiguous:
Yes
Permitted: Yes
Wet Space: No
Addition: No
Conversion: No

310 Creighton Drive, Rocky Mount, Franklin County, Virginia, United States, 24151

21 Floor 3 - Hall



Dimensions: 8'5" x 4'8"
Area: 66 sq. ft
Counted as Living Area:
Yes

Heated: Yes
Finished: Yes
Enclosed: Yes
Contiguous:
Yes
Permitted: Yes
Wet Space: No
Addition: No
Conversion: No

22 Floor 3 - Bedroom



Dimensions: 14'6" x 17'11"
Area: 232 sq. ft
Counted as Living Area:
Yes

Heated: Yes
Finished: Yes
Enclosed: Yes
Contiguous:
Yes
Permitted: Yes
Wet Space: No
Addition: No
Conversion: No