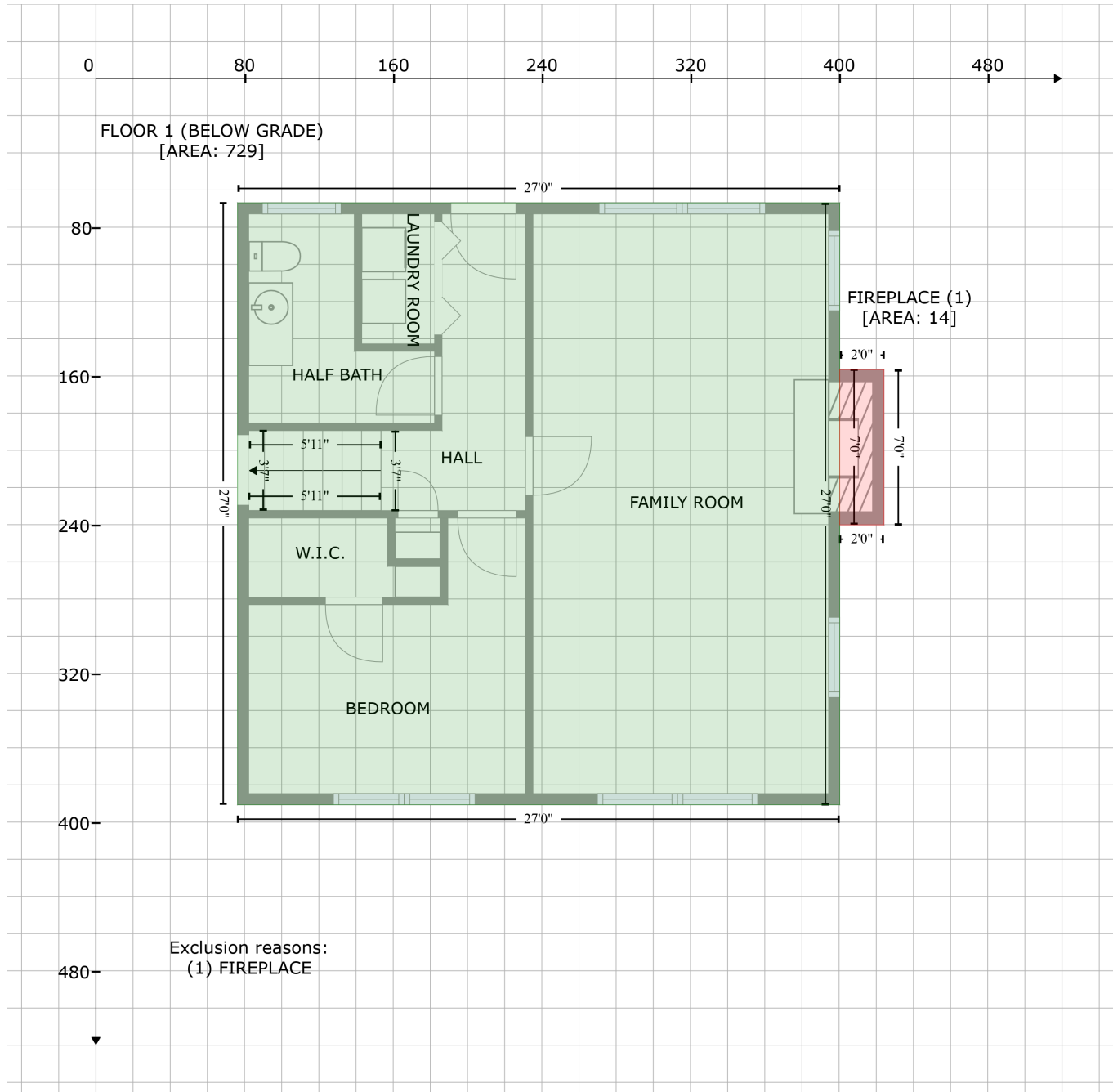


4605 Berini Drive, Westwood Estates, Durham, Durham County, North Carolina, United States, 27705

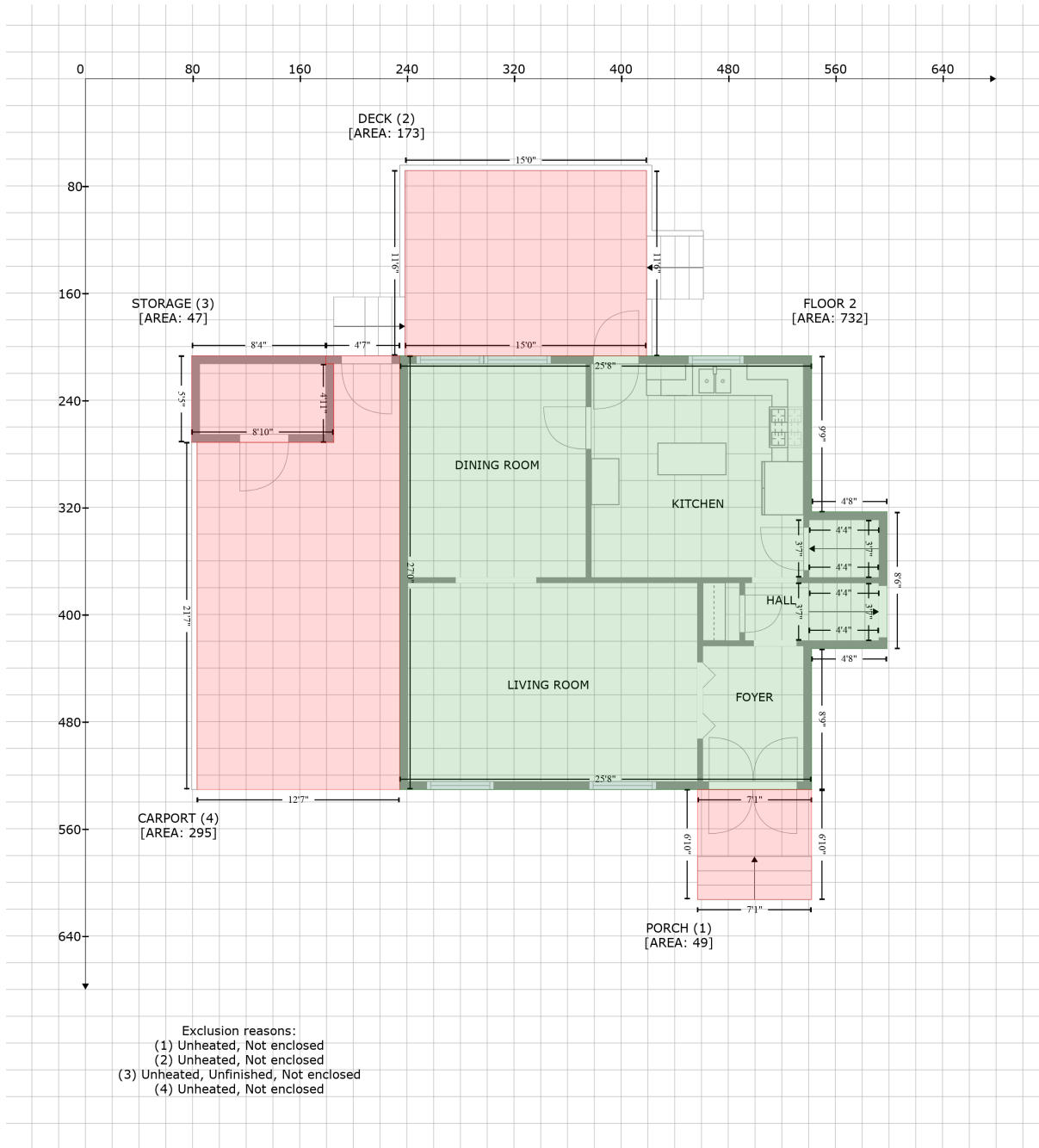
Gross Living Area: 2288 sq. ft



Space	Area (sq. ft)	Calculation <small>Coordinate Polygon Area Algorithm using inches</small>
FLOOR 1 (BELOW GRADE) (Living area)	729	$-((400.3 + 400.3) * (66.8 - 390.7) + (400.3 + 76.2) * (390.7 - 390.7) + (76.2 + 76.2) * (390.7 - 66.8) + (76.2 + 400.3) * (66.8 - 66.8)) * 0.5 * 0.00694$
FIREPLACE (Non-living area)	14	$-((424.2 + 424.2) * (156.5 - 240.1) + (424.2 + 400.3) * (240.1 - 240.1) + (400.3 + 400.3) * (240.1 - 156.5) + (400.3 + 424.2) * (156.5 - 156.5)) * 0.5 * 0.00694$

4605 Berini Drive, Westwood Estates, Durham, Durham County, North Carolina, United States, 27705

Gross Living Area: 2288 sq. ft



Space	Area (sq. ft)	Calculation <small>Coordinate Polygon Area Algorithm using inches</small>
FLOOR 2 (Living area)	732	$-\left((542.2 + 542.2) * (206.8 - 323.4) + (542.2 + 598.5) * (323.4 - 323.4) + (598.5 + 598.5) * (323.4 - 425.5) + (598.5 + 542.2) * (425.5 - 425.5) + (542.2 + 542.2) * (425.5 - 530.7) + (542.2 + 234.7) * (530.7 - 530.7) + (234.7 + 234.7) * (530.7 - 206.8) + (234.7 + 542.2) * (206.8 - 206.8)\right) * 0.5 + 0.00694$
PORCH (Non-living area)	49	$-\left((542.2 + 542.2) * (530.7 - 612.8) + (542.2 + 457) * (612.8 - 612.8) + (457 + 457) * (612.8 - 530.7) + (457 + 542.2) * (530.7 - 530.7)\right) * 0.5 + 0.00694$

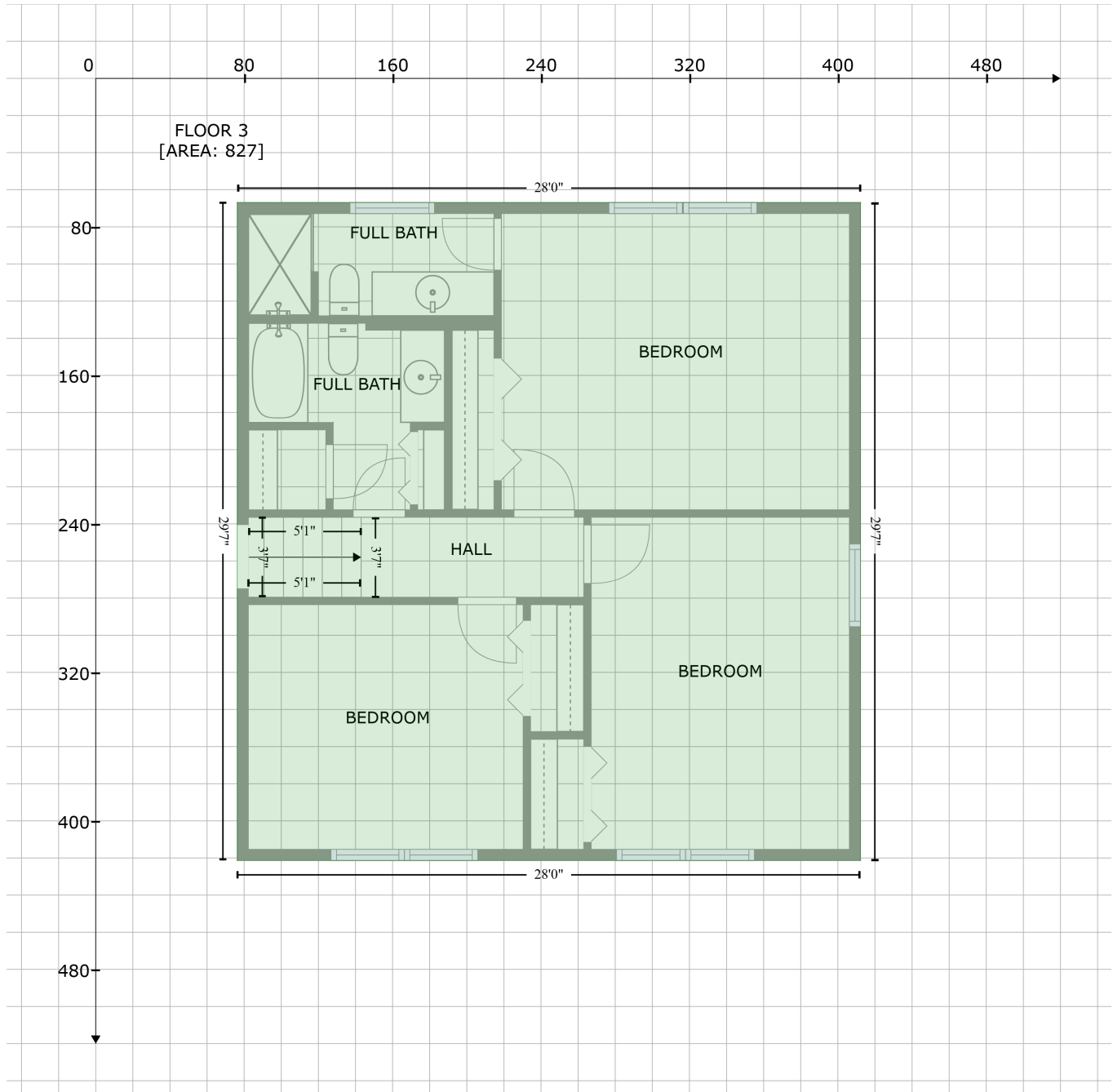
4605 Berini Drive, Westwood Estates, Durham, Durham County, North Carolina, United States, 27705

Gross Living Area: 2288 sq. ft

Space	Area (sq. ft)	Calculation <small>Coordinate Polygon Area Algorithm using inches</small>
DECK (Non-living area)	173	$-\left((419 + 419) * (68.5 - 206.8) + (419 + 238.7) * (206.8 - 206.8) + (238.7 + 238.7) * (206.8 - 68.5) + (238.7 + 419) * (68.5 - 68.5)\right) * 0.5 * 0.00694$
STORAGE (Non-living area)	47	$-\left((179.4 + 179.4) * (206.8 - 212.8) + (179.4 + 185.4) * (212.8 - 212.8) + (185.4 + 185.4) * (212.8 - 271.5) + (185.4 + 79.3) * (271.5 - 271.5) + (79.3 + 79.3) * (271.5 - 206.8) + (79.3 + 179.4) * (206.8 - 206.8)\right) * 0.5 * 0.00694$
CARPORT (Non-living area)	295	$-\left((234.7 + 234.7) * (206.8 - 530.7) + (234.7 + 83.3) * (530.7 - 530.7) + (83.3 + 83.3) * (530.7 - 271.5) + (83.3 + 185.4) * (271.5 - 271.5) + (185.4 + 185.4) * (271.5 - 212.8) + (185.4 + 179.4) * (212.8 - 212.8) + (179.4 + 179.4) * (212.8 - 206.8) + (179.4 + 234.7) * (206.8 - 206.8)\right) * 0.5 * 0.00694$

4605 Berini Drive, Westwood Estates, Durham, Durham County, North Carolina, United States, 27705

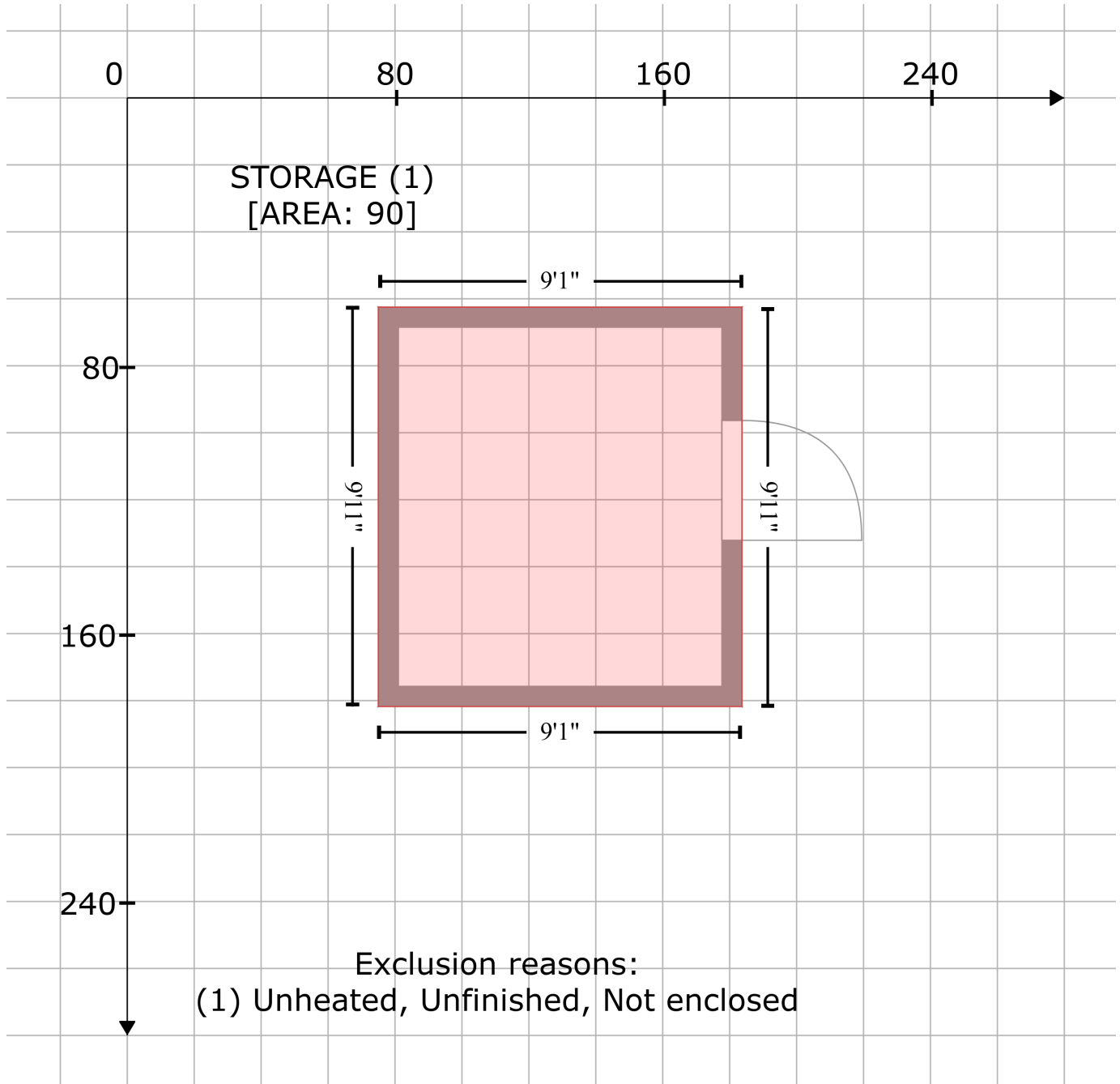
Gross Living Area: 2288 sq. ft



Space	Area (sq. ft)	Calculation <small>Coordinate Polygon Area Algorithm using inches</small>
FLOOR 3 (Living area)	827	$-((412.2 + 412.2) * (66.8 - 421.4) + (412.2 + 76.2) * (421.4 - 421.4) + (76.2 + 76.2) * (421.4 - 66.8) + (76.2 + 412.2) * (66.8 - 66.8)) * 0.5 * 0.00694$

4605 Berini Drive, Westwood Estates, Durham, Durham County, North Carolina, United States, 27705

Gross Living Area: 2288 sq. ft



Space	Area (sq. ft)	Calculation <small>Coordinate Polygon Area Algorithm using inches</small>
STORAGE (Non-living area)	90	$-((183.7 + 183.7) * (62.5 - 181.8) + (183.7 + 75) * (181.8 - 181.8) + (75 + 75) * (181.8 - 62.5) + (75 + 183.7) * (62.5 - 62.5)) * 0.5 * 0.00694$