

2834 Shuttle St

Abbotsford BC V4X 2S1

Lower Level: 1,285 SQ.FT.

Upper Level: 1,715 SQ.FT.

Total Area 3,000 SQ.FT.

Garage Area: 447 SQ.FT.

6



BEDROOMS

3

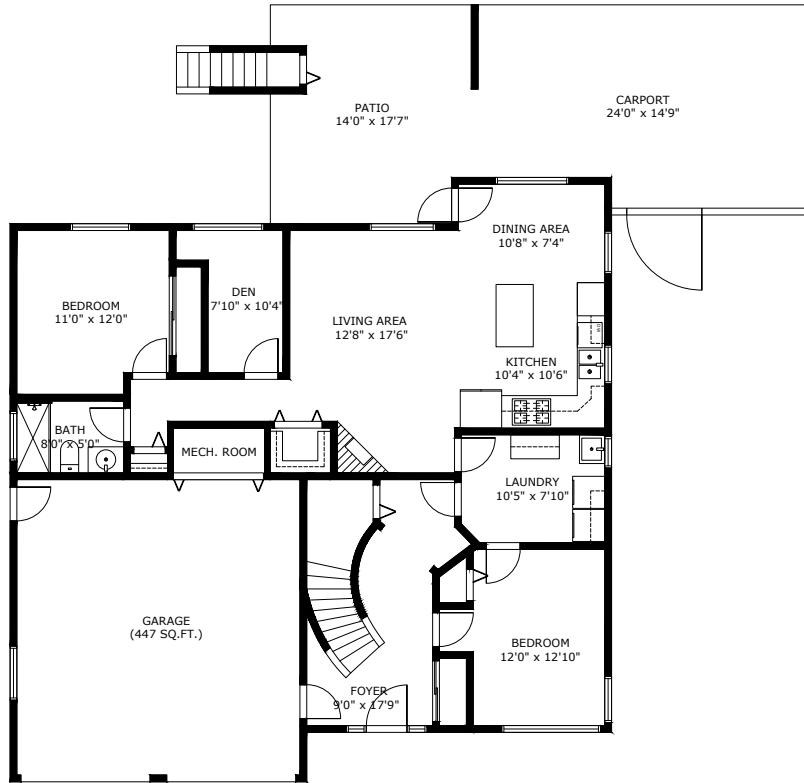


BATHROOMS

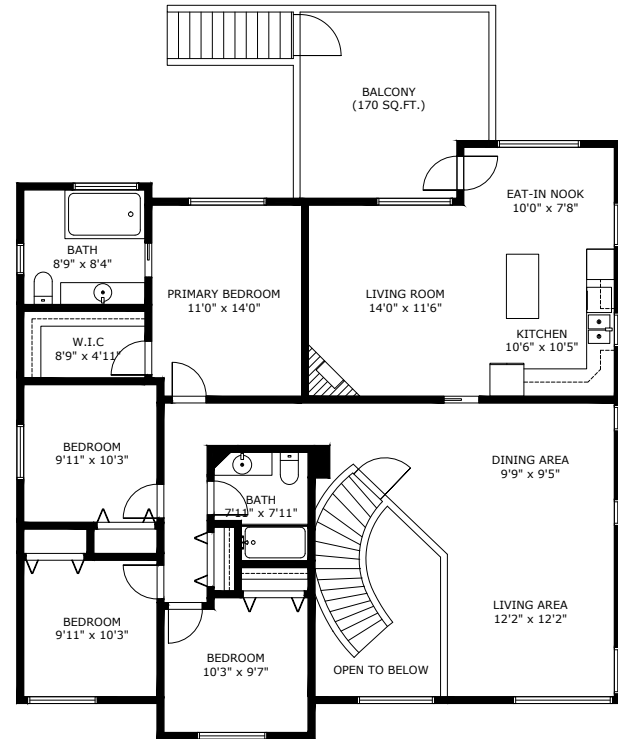
3,000



TOTAL SQ.FT.



Lower Level:
Ceiling Height: 8'0"-17'0"



Upper Level:
Ceiling Height: 8'0"

2834 SHUTTLE ST ABBOTSFORD V4X 2S1

Measurements are approximate and may not be to scale.
The floor plan illustration is not suitable for construction/architectural purposes.
This communication is not intended to cause or induce breach of an existing agency agreement

3D IMMERSIVE
Tours Photos Floor Plans

Professionally measured by 3D Immersive Marketing Ltd

Lead Floor Planner: *Simon Alexander*
Quality Assurance: *Francine Graham*