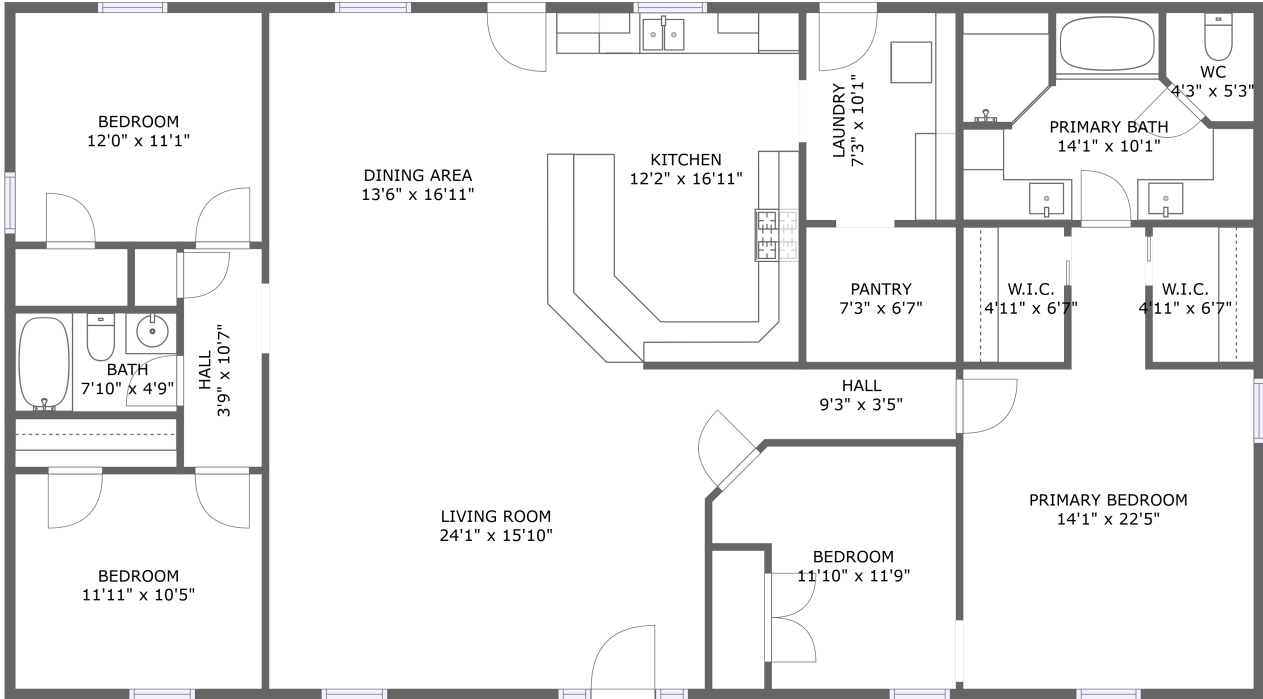



# 31790 Pea Ridge Road, Albany, Livingston Parish, Louisiana, United States, 70711



FLOOR 1

## Property summary


 **0** Garages

 **4** Bedrooms

 **2** Bathrooms

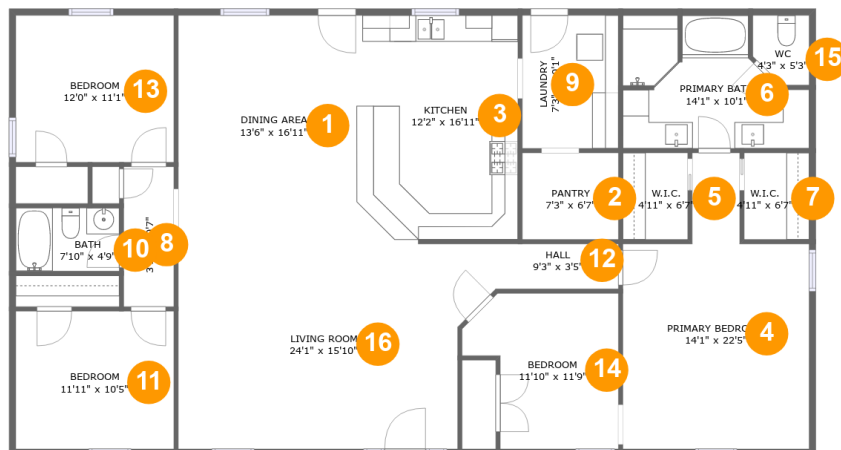
 **0** Half baths

 **1** Floors

 **2,065** Gross living area sqft

 **2,065** Total sqft

# 31790 Pea Ridge Road, Albany, Livingston Parish, Louisiana, United States, 70711



## Room dimensions

Floor 1

Total sqft: 2065 Living area: 2065

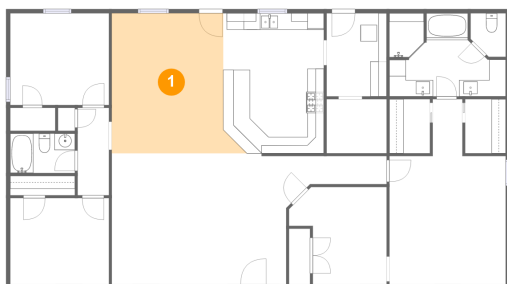
| #  |             | Dimensions     | sqft       | Counted as living area |
|----|-------------|----------------|------------|------------------------|
| 1  | Dining Room | 13'6" x 16'11" | 233 sq. ft | Yes                    |
| 2  | Pantry      | 7'3" x 6'7"    | 48 sq. ft  | Yes                    |
| 3  | Kitchen     | 12'2" x 16'11" | 203 sq. ft | Yes                    |
| 4  | Bedroom     | 14'1" x 22'5"  | 244 sq. ft | Yes                    |
| 5  | Cl          | 4'11" x 6'7"   | 32 sq. ft  | Yes                    |
| 6  | Bath        | 14'1" x 10'1"  | 117 sq. ft | Yes                    |
| 7  | Cl          | 4'11" x 6'7"   | 32 sq. ft  | Yes                    |
| 8  | Hall        | 3'9" x 10'7"   | 40 sq. ft  | Yes                    |
| 9  | Utility     | 7'3" x 10'1"   | 73 sq. ft  | Yes                    |
| 10 | Bath        | 7'10" x 4'9"   | 38 sq. ft  | Yes                    |
| 11 | Bedroom     | 11'11" x 10'5" | 125 sq. ft | Yes                    |

**31790 Pea Ridge Road, Albany, Livingston Parish,  
Louisiana, United States, 70711**

| #  |             | Dimensions     | sqft       | Counted as living area |
|----|-------------|----------------|------------|------------------------|
| 12 | Hall        | 9'3" x 3'5"    | 32 sq. ft  | Yes                    |
| 13 | Bedroom     | 12'0" x 11'1"  | 133 sq. ft | Yes                    |
| 14 | Bedroom     | 11'10" x 11'9" | 115 sq. ft | Yes                    |
| 15 | Bath        | 4'3" x 5'3"    | 20 sq. ft  | Yes                    |
| 16 | Living Room | 24'1" x 15'10" | 348 sq. ft | Yes                    |

# 31790 Pea Ridge Road, Albany, Livingston Parish, Louisiana, United States, 70711

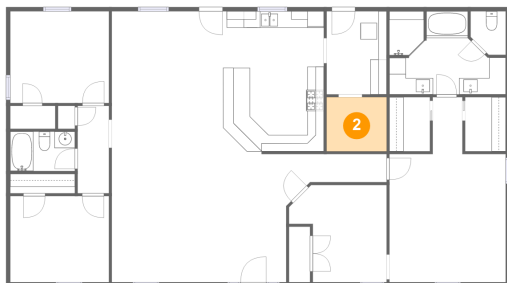
## 1 Floor 1 - Dining Room



Dimensions: 13'6" x 16'11"  
Area: 233 sq. ft  
Counted as living area: Yes

Heated: Yes  
Finished: Yes  
Enclosed: Yes  
Contiguous: Yes  
Permitted: Yes  
Wet space: No  
Addition: No  
Conversion: No

## 2 Floor 1 - Pantry

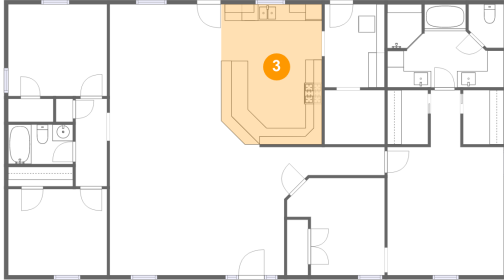


Dimensions: 7'3" x 6'7"  
Area: 48 sq. ft  
Counted as living area: Yes

Heated: Yes  
Finished: Yes  
Enclosed: Yes  
Contiguous: Yes  
Permitted: Yes  
Wet space: No  
Addition: No  
Conversion: No

# 31790 Pea Ridge Road, Albany, Livingston Parish, Louisiana, United States, 70711

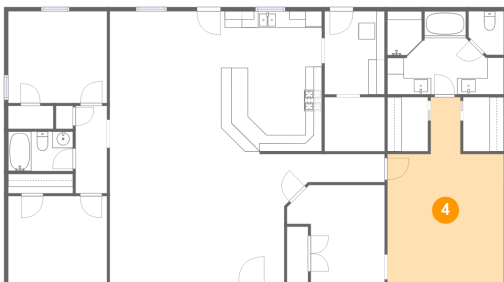
## 3 Floor 1 - Kitchen



Dimensions: 12'2" x 16'11"  
Area: 203 sq. ft  
Counted as living area: Yes

Heated: Yes  
Finished: Yes  
Enclosed: Yes  
Contiguous: Yes  
Permitted: Yes  
Wet space: No  
Addition: No  
Conversion: No

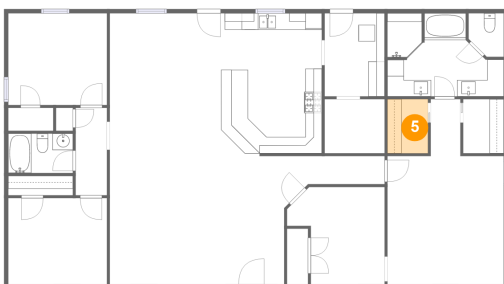
## 4 Floor 1 - Bedroom



Dimensions: 14'1" x 22'5"  
Area: 244 sq. ft  
Counted as living area: Yes

Heated: Yes  
Finished: Yes  
Enclosed: Yes  
Contiguous: Yes  
Permitted: Yes  
Wet space: No  
Addition: No  
Conversion: No

## 5 Floor 1 - Cl

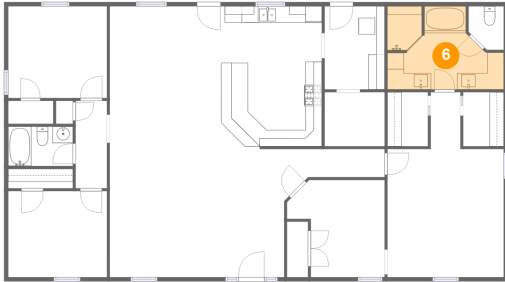


Dimensions: 4'11" x 6'7"  
Area: 32 sq. ft  
Counted as living area: Yes

Heated: Yes  
Finished: Yes  
Enclosed: Yes  
Contiguous: Yes  
Permitted: Yes  
Wet space: No  
Addition: No  
Conversion: No

# 31790 Pea Ridge Road, Albany, Livingston Parish, Louisiana, United States, 70711

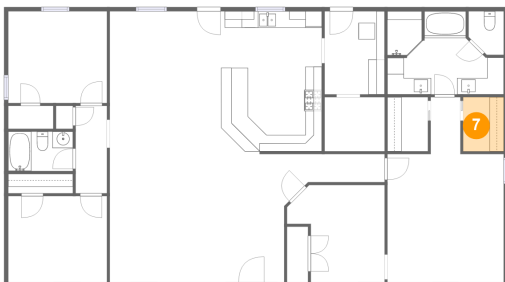
## 6 Floor 1 - Bath



Dimensions: 14'1" x 10'1"  
Area: 117 sq. ft  
Counted as living area: Yes

Heated: Yes  
Finished: Yes  
Enclosed: Yes  
Contiguous: Yes  
Permitted: Yes  
Wet space: Yes  
Addition: No  
Conversion: No

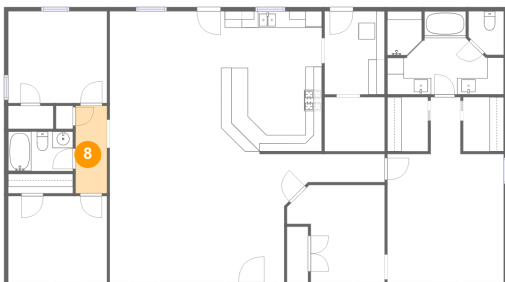
## 7 Floor 1 - Cl



Dimensions: 4'11" x 6'7"  
Area: 32 sq. ft  
Counted as living area: Yes

Heated: Yes  
Finished: Yes  
Enclosed: Yes  
Contiguous: Yes  
Permitted: Yes  
Wet space: No  
Addition: No  
Conversion: No

## 8 Floor 1 - Hall

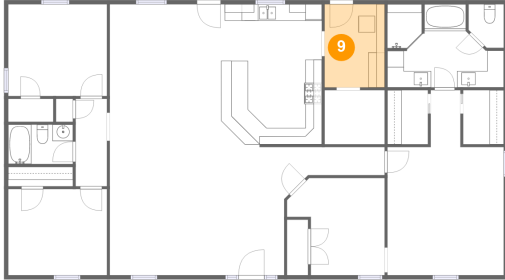


Dimensions: 3'9" x 10'7"  
Area: 40 sq. ft  
Counted as living area: Yes

Heated: Yes  
Finished: Yes  
Enclosed: Yes  
Contiguous: Yes  
Permitted: Yes  
Wet space: No  
Addition: No  
Conversion: No

# 31790 Pea Ridge Road, Albany, Livingston Parish, Louisiana, United States, 70711

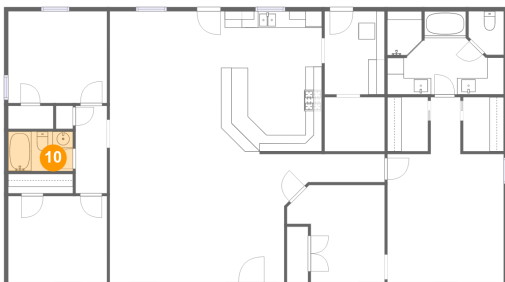
## 9 Floor 1 - Utility



Dimensions: 7'3" x 10'1"  
Area: 73 sq. ft  
Counted as living area: Yes

Heated: Yes  
Finished: Yes  
Enclosed: Yes  
Contiguous: Yes  
Permitted: Yes  
Wet space: No  
Addition: No  
Conversion: No

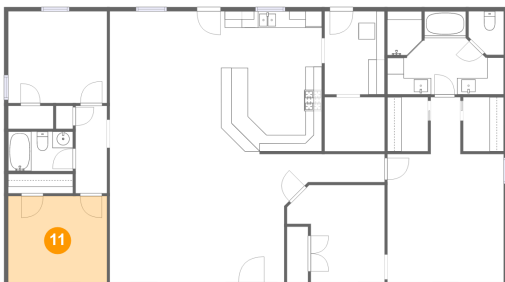
## 10 Floor 1 - Bath



Dimensions: 7'10" x 4'9"  
Area: 38 sq. ft  
Counted as living area: Yes

Heated: Yes  
Finished: Yes  
Enclosed: Yes  
Contiguous: Yes  
Permitted: Yes  
Wet space: Yes  
Addition: No  
Conversion: No

## 11 Floor 1 - Bedroom

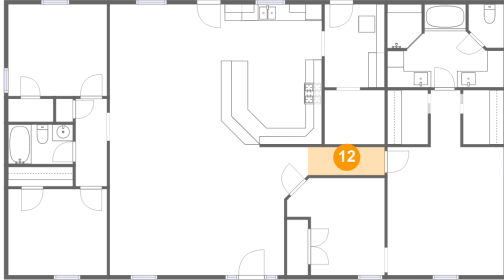


Dimensions: 11'11" x 10'5"  
Area: 125 sq. ft  
Counted as living area: Yes

Heated: Yes  
Finished: Yes  
Enclosed: Yes  
Contiguous: Yes  
Permitted: Yes  
Wet space: No  
Addition: No  
Conversion: No

# 31790 Pea Ridge Road, Albany, Livingston Parish, Louisiana, United States, 70711

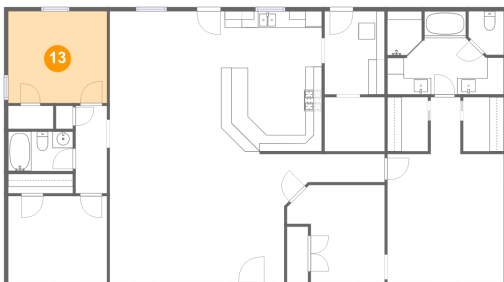
## 12 Floor 1 - Hall



Dimensions: 9'3" x 3'5"  
Area: 32 sq. ft  
Counted as living area: Yes

Heated: Yes  
Finished: Yes  
Enclosed: Yes  
Contiguous: Yes  
Permitted: Yes  
Wet space: No  
Addition: No  
Conversion: No

## 13 Floor 1 - Bedroom



Dimensions: 12'0" x 11'1"  
Area: 133 sq. ft  
Counted as living area: Yes

Heated: Yes  
Finished: Yes  
Enclosed: Yes  
Contiguous: Yes  
Permitted: Yes  
Wet space: No  
Addition: No  
Conversion: No

## 14 Floor 1 - Bedroom



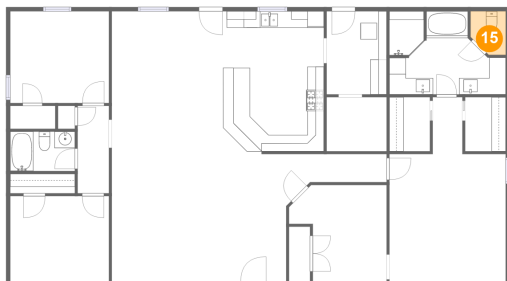
Dimensions: 11'10" x 11'9"  
Area: 115 sq. ft  
Counted as living area: Yes

Heated: Yes  
Finished: Yes  
Enclosed: Yes  
Contiguous: Yes  
Permitted: Yes  
Wet space: No  
Addition: No  
Conversion: No



**31790 Pea Ridge Road, Albany, Livingston Parish,  
Louisiana, United States, 70711**

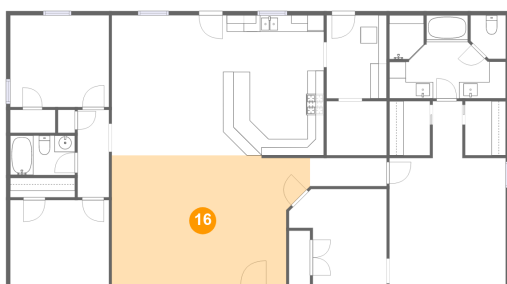
**15 Floor 1 - Bath**



**Dimensions: 4'3" x 5'3"**  
**Area: 20 sq. ft**  
**Counted as living area: Yes**

**Heated: Yes**  
**Finished: Yes**  
**Enclosed: Yes**  
**Contiguous: Yes**  
**Permitted: Yes**  
**Wet space: Yes**  
**Addition: No**  
**Conversion: No**

**16 Floor 1 - Living Room**



**Dimensions: 24'1" x 15'10"**  
**Area: 348 sq. ft**  
**Counted as living area: Yes**

**Heated: Yes**  
**Finished: Yes**  
**Enclosed: Yes**  
**Contiguous: Yes**  
**Permitted: Yes**  
**Wet space: No**  
**Addition: No**  
**Conversion: No**