

524 S 3rd St, West Dundee, IL, US



Property summary

1 Garages **4** Bedrooms **2** Bathrooms **0** Half baths

3 Floors **1,718** Gross living area sqft **3,599** Total sqft

524 S 3rd St, West Dundee, IL, US

Room dimensions

Floor 1

Total sqft: 1624 Living area: 0

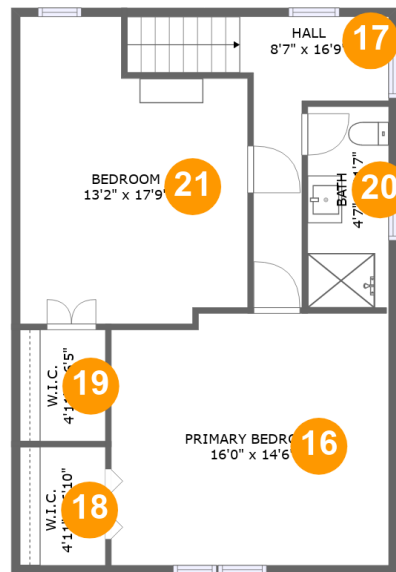
#		Dimensions	sqft	Counted as living area
1	Deck	5'7" x 15'1"	86 sq. ft	No
2	Garage	23'6" x 23'9"	557 sq. ft	No
3	Basement	21'3" x 29'7"	491 sq. ft	No
4	Storage	11'10" x 10'11"	130 sq. ft	No
5	Room	13'2" x 17'6"	229 sq. ft	No

524 S 3rd St, West Dundee, IL, US**Room dimensions**

Floor 2

Total sqft: 1251 Living area: 994

#		Dimensions	sqft	Counted as living area
6	Deck	5'7" x 15'1"	86 sq. ft	No
7	Bedroom	7'10" x 9'3"	72 sq. ft	Yes
8	Kitchen	13'1" x 17'6"	228 sq. ft	Yes
9	Foyer	4'0" x 4'3"	17 sq. ft	Yes
10	Bedroom	7'9" x 10'7"	77 sq. ft	Yes
11	Screened Porch	21'3" x 7'2"	153 sq. ft	No
12	Dining Room	15'11" x 18'4"	243 sq. ft	Yes
13	Bath	7'10" x 6'6"	46 sq. ft	Yes
14	Living Room	13'2" x 13'0"	170 sq. ft	Yes
15	Hall	4'1" x 3'3"	13 sq. ft	Yes

524 S 3rd St, West Dundee, IL, US**Room dimensions**

Floor 3

Total sqft: 724 Living area: 724

#		Dimensions	sqft	Counted as living area
16	Primary Bedroom	16'0" x 14'6"	229 sq. ft	Yes
17	Hall	8'7" x 16'9"	95 sq. ft	Yes
18	W.I.C.	4'11" x 6'10"	34 sq. ft	Yes
19	W.I.C.	4'11" x 6'5"	32 sq. ft	Yes
20	Bath	4'7" x 11'7"	53 sq. ft	Yes
21	Bedroom	13'2" x 17'9"	204 sq. ft	Yes

1 Floor 1 - Deck



Dimensions: 5'7" x 15'1"
Area: 86 sq. ft
Counted as living area: No

Heated: No
Finished: Yes
Enclosed: No
Contiguous: Yes
Permitted: Yes
Wet space: No
Addition: No
Conversion: No



2 Floor 1 - Garage



Dimensions: 23'6" x 23'9"
Area: 557 sq. ft
Counted as living area: No

Heated: No
Finished: No
Enclosed: Yes
Contiguous: Yes
Permitted: Yes
Wet space: No
Addition: No
Conversion: No



3 Floor 1 - Basement



Dimensions: 21'3" x 29'7"
Area: 491 sq. ft
Counted as living area: No

Heated: Yes
Finished: Yes
Enclosed: Yes
Contiguous: No
Permitted: Yes
Wet space: No
Addition: No
Conversion: No



4 Floor 1 - Storage



Dimensions: 11'10" x 10'11"
Area: 130 sq. ft
Counted as living area: No

Heated: No
Finished: No
Enclosed: No
Contiguous: Yes
Permitted: Yes
Wet space: No
Addition: No
Conversion: No



5 Floor 1 - Room



Dimensions: 13'2" x 17'6"
Area: 229 sq. ft
Counted as living area: No

Heated: Yes
Finished: Yes
Enclosed: Yes
Contiguous: No
Permitted: Yes
Wet space: No
Addition: No
Conversion: No



6 Floor 2 - Deck



Dimensions: 5'7" x 15'1"
Area: 86 sq. ft
Counted as living area: No

Heated: No
Finished: Yes
Enclosed: No
Contiguous: Yes
Permitted: Yes
Wet space: No
Addition: No
Conversion: No

7 Floor 2 - Bedroom



Dimensions: 7'10" x 9'3"
Area: 72 sq. ft
Counted as living area: Yes

Heated: Yes
Finished: Yes
Enclosed: Yes
Contiguous: Yes
Permitted: Yes
Wet space: No
Addition: No
Conversion: No

8 Floor 2 - Kitchen



Dimensions: 13'1" x 17'6"
Area: 228 sq. ft
Counted as living area: Yes

Heated: Yes
Finished: Yes
Enclosed: Yes
Contiguous: Yes
Permitted: Yes
Wet space: No
Addition: No
Conversion: No

524 S 3rd St, West Dundee, IL, US

9 Floor 2 - Foyer



Dimensions: 4'0" x 4'3"
Area: 17 sq. ft
Counted as living area: Yes

Heated: Yes
Finished: Yes
Enclosed: Yes
Contiguous: Yes
Permitted: Yes
Wet space: No
Addition: No
Conversion: No

10 Floor 2 - Bedroom



Dimensions: 7'9" x 10'7"
Area: 77 sq. ft
Counted as living area: Yes

Heated: Yes
Finished: Yes
Enclosed: Yes
Contiguous: Yes
Permitted: Yes
Wet space: No
Addition: No
Conversion: No

11 Floor 2 - Screened Porch



Dimensions: 21'3" x 7'2"
Area: 153 sq. ft
Counted as living area: No

Heated: No
Finished: Yes
Enclosed: No
Contiguous: Yes
Permitted: Yes
Wet space: No
Addition: No
Conversion: No

524 S 3rd St, West Dundee, IL, US

12 Floor 2 - Dining Room



Dimensions: 15'11" x 18'4"
Area: 243 sq. ft
Counted as living area: Yes

Heated: Yes
Finished: Yes
Enclosed: Yes
Contiguous: Yes
Permitted: Yes
Wet space: No
Addition: No
Conversion: No

13 Floor 2 - Bath



Dimensions: 7'10" x 6'6"
Area: 46 sq. ft
Counted as living area: Yes

Heated: Yes
Finished: Yes
Enclosed: Yes
Contiguous: Yes
Permitted: Yes
Wet space: Yes
Addition: No
Conversion: No

14 Floor 2 - Living Room



Dimensions: 13'2" x 13'0"
Area: 170 sq. ft
Counted as living area: Yes

Heated: Yes
Finished: Yes
Enclosed: Yes
Contiguous: Yes
Permitted: Yes
Wet space: No
Addition: No
Conversion: No

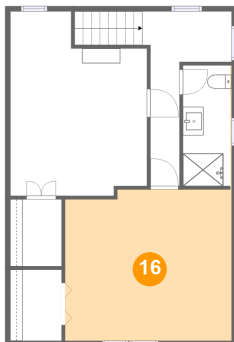
15 Floor 2 - Hall



Dimensions: 4'1" x 3'3"
Area: 13 sq. ft
Counted as living area: Yes

Heated: Yes
Finished: Yes
Enclosed: Yes
Contiguous: Yes
Permitted: Yes
Wet space: No
Addition: No
Conversion: No

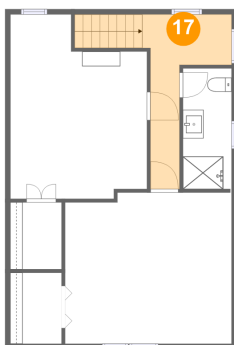
16 Floor 3 - Primary Bedroom



Dimensions: 16'0" x 14'6"
Area: 229 sq. ft
Counted as living area: Yes

Heated: Yes
Finished: Yes
Enclosed: Yes
Contiguous: Yes
Permitted: Yes
Wet space: No
Addition: No
Conversion: No

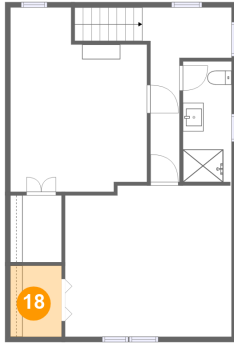
17 Floor 3 - Hall



Dimensions: 8'7" x 16'9"
Area: 95 sq. ft
Counted as living area: Yes

Heated: Yes
Finished: Yes
Enclosed: Yes
Contiguous: Yes
Permitted: Yes
Wet space: No
Addition: No
Conversion: No

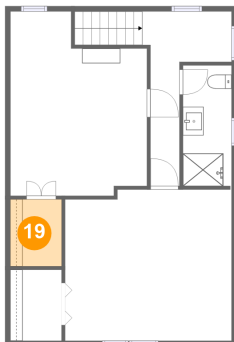
18 Floor 3 - W.I.C.



Dimensions: 4'11" x 6'10"
Area: 34 sq. ft
Counted as living area: Yes

Heated: Yes
Finished: Yes
Enclosed: Yes
Contiguous: Yes
Permitted: Yes
Wet space: No
Addition: No
Conversion: No

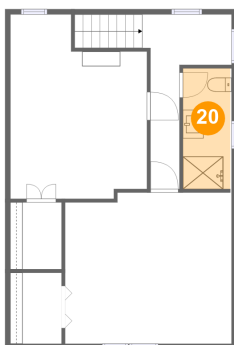
19 Floor 3 - W.I.C.



Dimensions: 4'11" x 6'5"
Area: 32 sq. ft
Counted as living area: Yes

Heated: Yes
Finished: Yes
Enclosed: Yes
Contiguous: Yes
Permitted: Yes
Wet space: No
Addition: No
Conversion: No

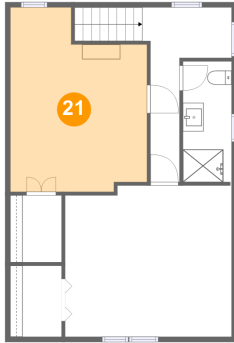
20 Floor 3 - Bath



Dimensions: 4'7" x 11'7"
Area: 53 sq. ft
Counted as living area: Yes

Heated: Yes
Finished: Yes
Enclosed: Yes
Contiguous: Yes
Permitted: Yes
Wet space: Yes
Addition: No
Conversion: No

21 Floor 3 - Bedroom



Dimensions: 13'2" x 17'9"
Area: 204 sq. ft
Counted as living area: Yes

Heated: Yes
Finished: Yes
Enclosed: Yes
Contiguous: Yes
Permitted: Yes
Wet space: No
Addition: No
Conversion: No