

Home report

1545 Northwest 131st Avenue, Cedar Mill, Portland, Washington
County, Oregon, United States, 97229




Total Area: 1538 sq. ft
Floor 1: 514 sq. ft, Floor 2: 1024 sq. ft
Excluded: Garage 461 sq. ft, Fireplace 16 sq. ft, Deck 126 sq. ft, Walls: 145 sq. ft

Property summary

 **2** Floors

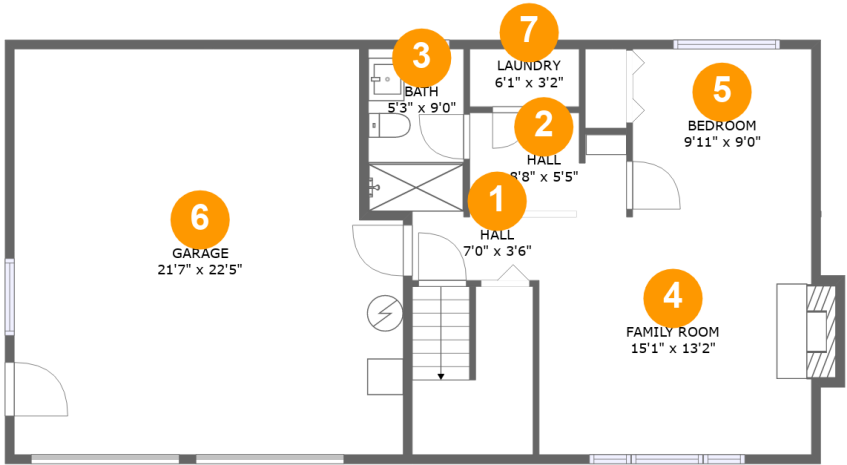
 **4** Bedrooms

 **2** Bathrooms

 **1** Garages

Home report

1545 Northwest 131st Avenue, Cedar Mill, Portland, Washington
County, Oregon, United States, 97229



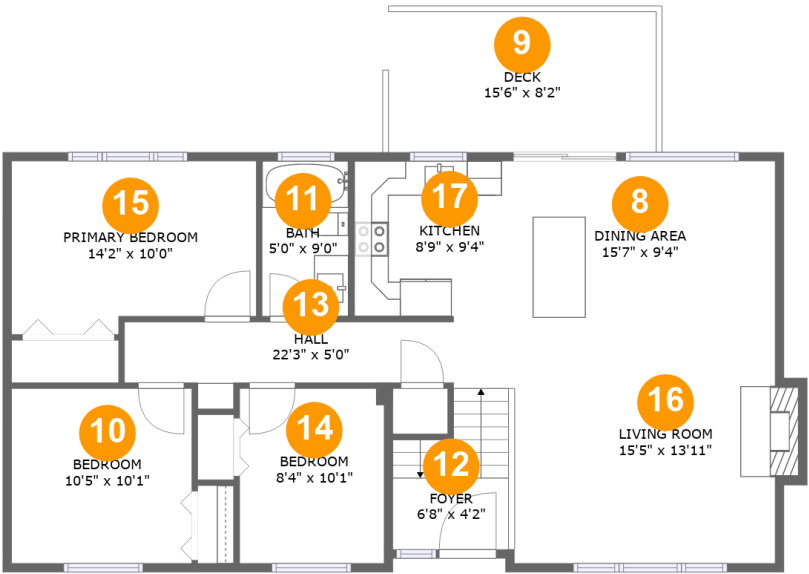
Room dimensions

Floor 1 Total:514sqft Excluded: 469sqft

#		Max Dimensions	sqft	Included
1	Hall	7'0" x 3'6"	25 sq. ft	Yes
2	Hall	8'8" x 5'5"	44 sq. ft	Yes
3	Bath	5'3" x 9'0"	47 sq. ft	Yes
4	Family Room	15'1" x 13'2"	205 sq. ft	Yes
5	Bedroom	9'11" x 9'0"	89 sq. ft	Yes
6	Garage	21'7" x 22'5"	461 sq. ft	No
7	Laundry	6'1" x 3'2"	19 sq. ft	Yes

Home report

1545 Northwest 131st Avenue, Cedar Mill, Portland, Washington
County, Oregon, United States, 97229



Room dimensions

Floor 2 Total:1024sqft Excluded: 134sqft

#		Max Dimensions	sqft	Included
8	Dining Area	15'7" x 9'4"	145 sq. ft	Yes
9	Deck	15'6" x 8'2"	126 sq. ft	No
10	Bedroom	10'5" x 10'1"	105 sq. ft	Yes
11	Bath	5'0" x 9'0"	45 sq. ft	Yes
12	Foyer	6'8" x 4'2"	52 sq. ft	Yes
13	Hall	22'3" x 5'0"	82 sq. ft	Yes
14	Bedroom	8'4" x 10'1"	84 sq. ft	Yes
15	Primary Bedroom	14'2" x 10'0"	133 sq. ft	Yes
16	Living Room	15'5" x 13'11"	222 sq. ft	Yes
17	Kitchen	8'9" x 9'4"	79 sq. ft	Yes

1 Floor 1 - Hall



Max Dimensions: 7'0" x 3'6"
Calculated Area: 25 sq. ft
Included: Yes

Heated: Yes
Finished: Yes
Enclosed: Yes
Contiguous: Yes
Permitted: Yes
Wet space: No
Addition: No
Conversion: No

2 Floor 1 - Hall



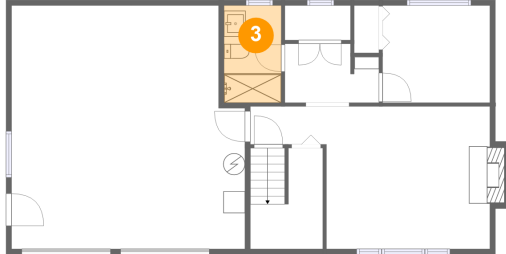
Max Dimensions: 8'8" x 5'5"
Calculated Area: 44 sq. ft
Included: Yes

Heated: Yes
Finished: Yes
Enclosed: Yes
Contiguous: Yes
Permitted: Yes
Wet space: No
Addition: No
Conversion: No

Home report

1545 Northwest 131st Avenue, Cedar Mill, Portland, Washington
County, Oregon, United States, 97229

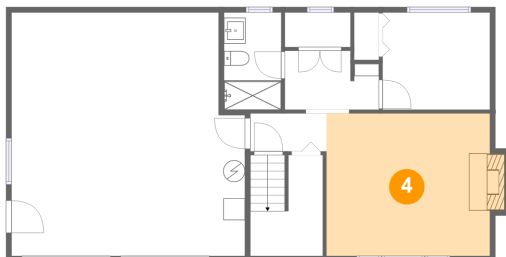
3 Floor 1 - Bath



Max Dimensions: 5'3" x 9'0"
Calculated Area: 47 sq. ft
Included: Yes

Heated: Yes
Finished: Yes
Enclosed: Yes
Contiguous: Yes
Permitted: Yes
Wet space: Yes
Addition: No
Conversion: No

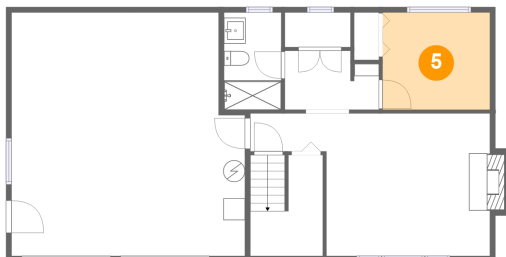
4 Floor 1 - Family Room



Max Dimensions: 15'1" x 13'2"
Calculated Area: 205 sq. ft
Included: Yes

Heated: Yes
Finished: Yes
Enclosed: Yes
Contiguous: Yes
Permitted: Yes
Wet space: No
Addition: No
Conversion: No

5 Floor 1 - Bedroom



Max Dimensions: 9'11" x 9'0"
Calculated Area: 89 sq. ft
Included: Yes

Heated: Yes
Finished: Yes
Enclosed: Yes
Contiguous: Yes
Permitted: Yes
Wet space: No
Addition: No
Conversion: No

Home report

1545 Northwest 131st Avenue, Cedar Mill, Portland, Washington
County, Oregon, United States, 97229

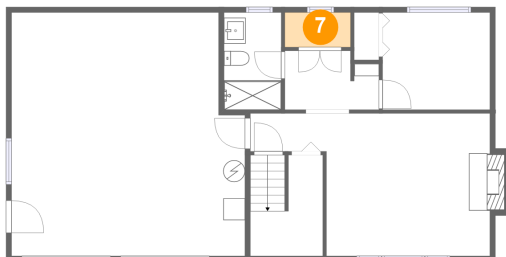
6 Floor 1 - Garage



Max Dimensions: 21'7" x 22'5"
Calculated Area: 461 sq. ft
Included: No

Heated: No
Finished: No
Enclosed: Yes
Contiguous: Yes
Permitted: Yes
Wet space: No
Addition: No
Conversion: No

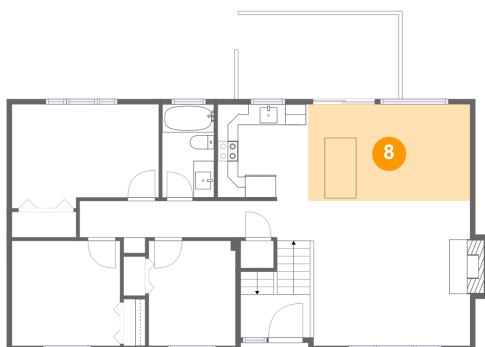
7 Floor 1 - Laundry



Max Dimensions: 6'1" x 3'2"
Calculated Area: 19 sq. ft
Included: Yes

Heated: Yes
Finished: Yes
Enclosed: Yes
Contiguous: Yes
Permitted: Yes
Wet space: No
Addition: No
Conversion: No

8 Floor 2 - Dining Area



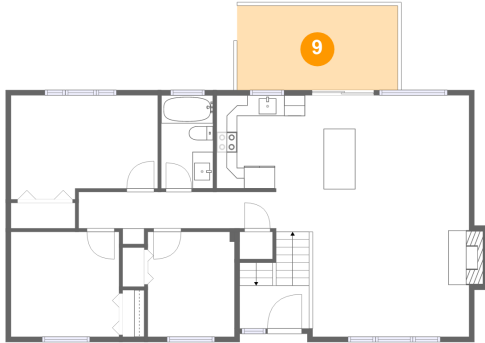
Max Dimensions: 15'7" x 9'4"
Calculated Area: 145 sq. ft
Included: Yes

Heated: Yes
Finished: Yes
Enclosed: Yes
Contiguous: Yes
Permitted: Yes
Wet space: No
Addition: No
Conversion: No

Home report

1545 Northwest 131st Avenue, Cedar Mill, Portland, Washington
County, Oregon, United States, 97229

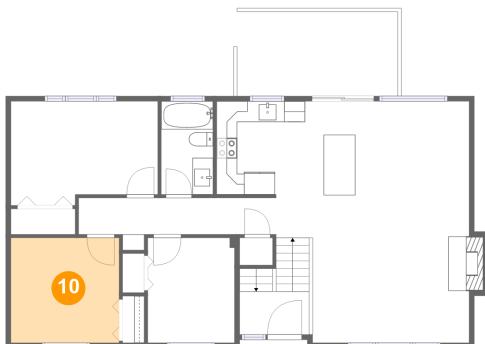
9 Floor 2 - Deck



Max Dimensions: 15'6" x 8'2"
Calculated Area: 126 sq. ft
Included: No

Heated: No
Finished: Yes
Enclosed: No
Contiguous: Yes
Permitted: Yes
Wet space: No
Addition: No
Conversion: No

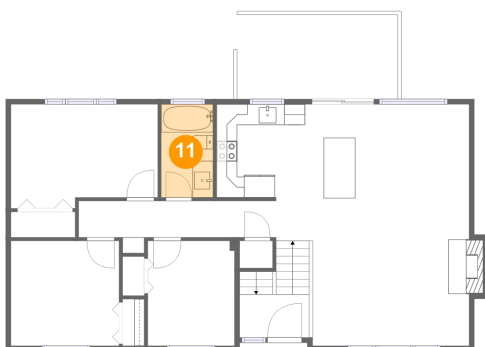
10 Floor 2 - Bedroom



Max Dimensions: 10'5" x 10'1"
Calculated Area: 105 sq. ft
Included: Yes

Heated: Yes
Finished: Yes
Enclosed: Yes
Contiguous: Yes
Permitted: Yes
Wet space: No
Addition: No
Conversion: No

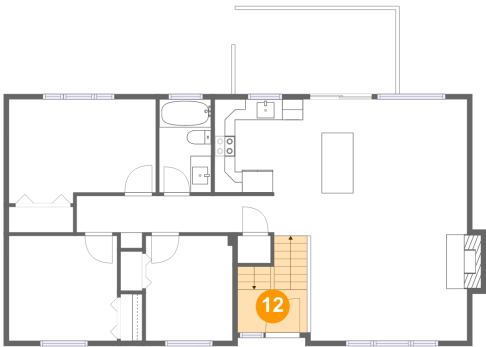
11 Floor 2 - Bath



Max Dimensions: 5'0" x 9'0"
Calculated Area: 45 sq. ft
Included: Yes

Heated: Yes
Finished: Yes
Enclosed: Yes
Contiguous: Yes
Permitted: Yes
Wet space: Yes
Addition: No
Conversion: No

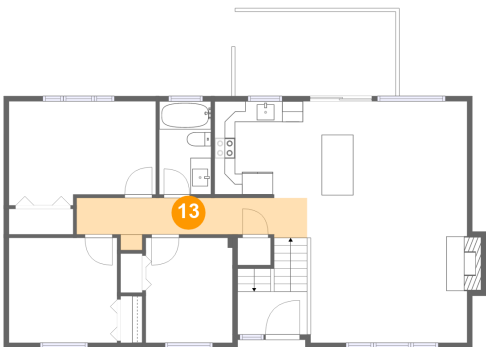
12 Floor 2 - Foyer



Max Dimensions: 6'8" x 4'2"
Calculated Area: 52 sq. ft
Included: Yes

Heated: Yes
Finished: Yes
Enclosed: Yes
Contiguous: Yes
Permitted: Yes
Wet space: No
Addition: No
Conversion: No

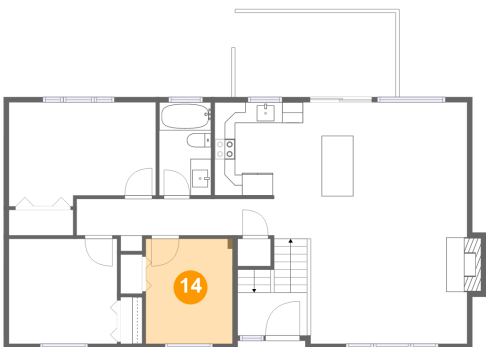
13 Floor 2 - Hall



Max Dimensions: 22'3" x 5'0"
Calculated Area: 82 sq. ft
Included: Yes

Heated: Yes
Finished: Yes
Enclosed: Yes
Contiguous: Yes
Permitted: Yes
Wet space: No
Addition: No
Conversion: No

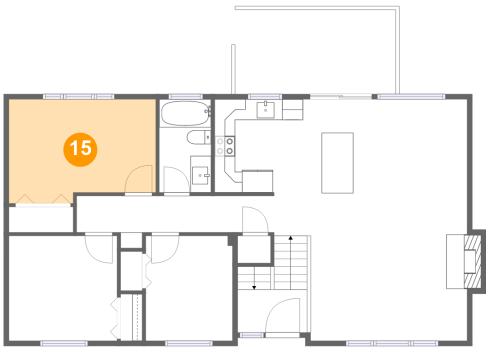
14 Floor 2 - Bedroom



Max Dimensions: 8'4" x 10'1"
Calculated Area: 84 sq. ft
Included: Yes

Heated: Yes
Finished: Yes
Enclosed: Yes
Contiguous: Yes
Permitted: Yes
Wet space: No
Addition: No
Conversion: No

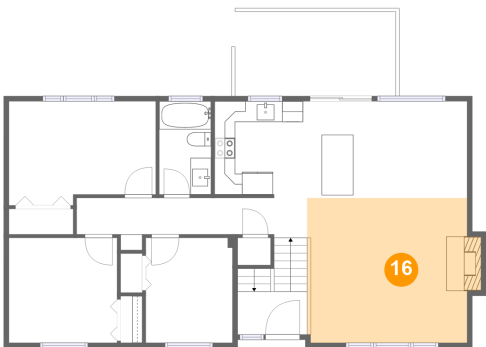
15 Floor 2 - Primary Bedroom



Max Dimensions: 14'2" x 10'0"
Calculated Area: 133 sq. ft
Included: Yes

Heated: Yes
Finished: Yes
Enclosed: Yes
Contiguous: Yes
Permitted: Yes
Wet space: No
Addition: No
Conversion: No

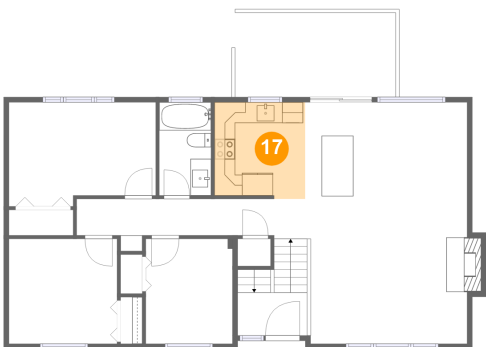
16 Floor 2 - Living Room



Max Dimensions: 15'5" x 13'11"
Calculated Area: 222 sq. ft
Included: Yes

Heated: Yes
Finished: Yes
Enclosed: Yes
Contiguous: Yes
Permitted: Yes
Wet space: No
Addition: No
Conversion: No

17 Floor 2 - Kitchen



Max Dimensions: 8'9" x 9'4"
Calculated Area: 79 sq. ft
Included: Yes

Heated: Yes
Finished: Yes
Enclosed: Yes
Contiguous: Yes
Permitted: Yes
Wet space: No
Addition: No
Conversion: No