

Home report

29 Elmwood Avenue, Salem, Rockingham County, New Hampshire, United States, 03079



Total GLA: 2610 sq. ft

Below Ground: 0 sq. ft, Floor 2: 1083 sq. ft, Floor 3: 1527 sq. ft

Excluded: Basement 873 sq. ft, Undefined 27 sq. ft, Garage 729 sq. ft, Low ceiling 67 sq. ft

Property summary

 **3** Floors

 **2** Bedrooms

 **2** Bathrooms

Home report

**29 Elmwood Avenue, Salem, Rockingham County, New  
Hampshire, United States, 03079**



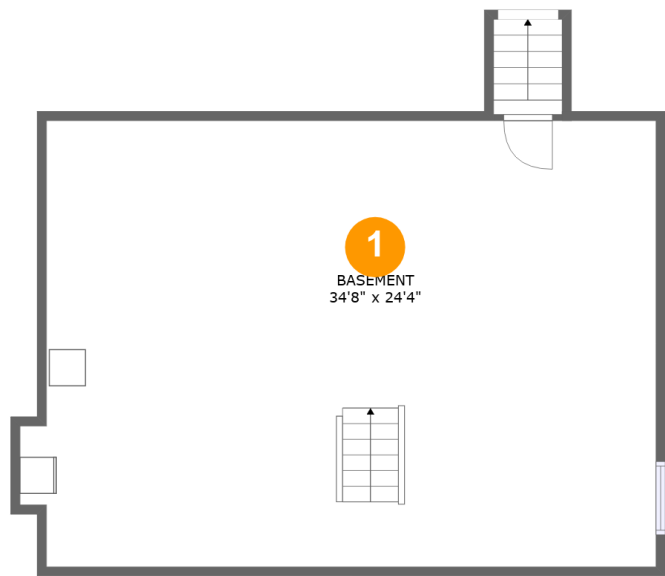
**1**  
Half baths



**1**  
Garages

Home report

29 Elmwood Avenue, Salem, Rockingham County, New Hampshire, United States, 03079



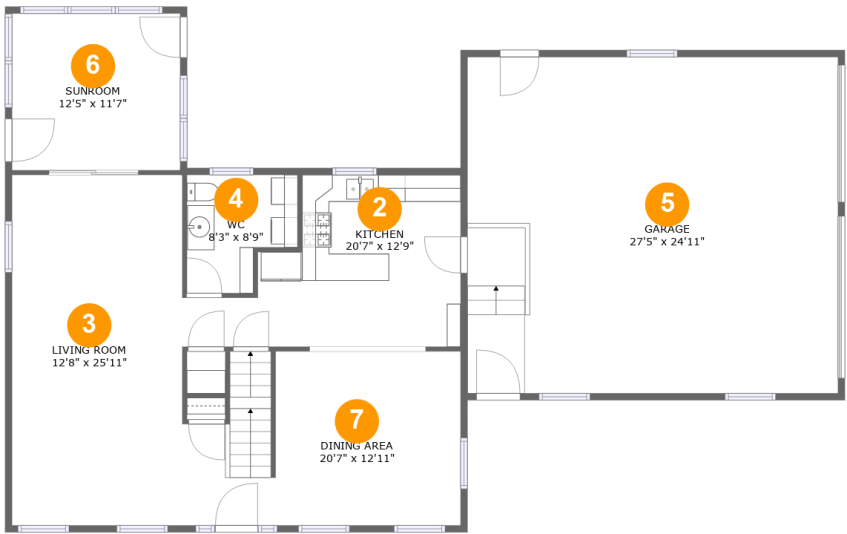
Room dimensions

Floor 1 Below ground Total:0sqft Excluded: 900sqft

#		Max Dimensions	sqft	Included
1	Basement	34'8" x 24'4"	814 sq. ft	No

Home report

29 Elmwood Avenue, Salem, Rockingham County, New Hampshire, United States, 03079



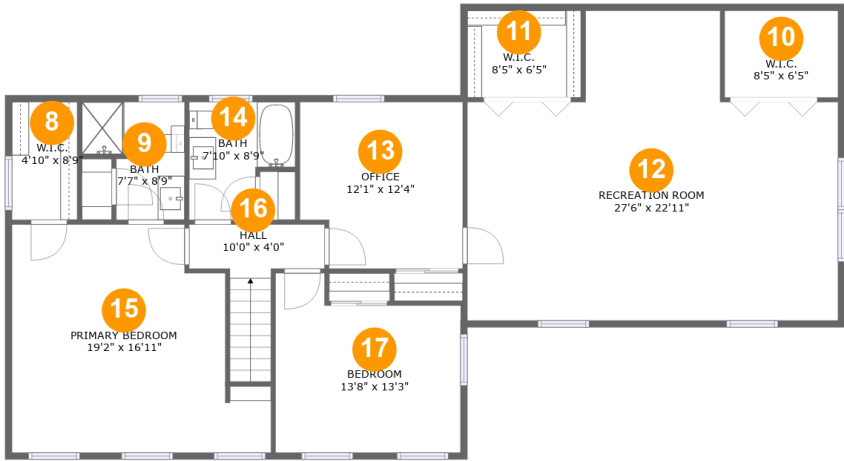
Room dimensions

Floor 2 Total:1083sqft   Excluded: 729sqft

#		Max Dimensions	sqft	Included
2	Kitchen	20'7" x 12'9"	193 sq. ft	Yes
3	Living Room	12'8" x 25'11"	328 sq. ft	Yes
4	WC	8'3" x 8'9"	61 sq. ft	Yes
5	Garage	27'5" x 24'11"	684 sq. ft	No
6	Sunroom	12'5" x 11'7"	145 sq. ft	Yes
7	Dining Area	20'7" x 12'11"	244 sq. ft	Yes

Home report

29 Elmwood Avenue, Salem, Rockingham County, New Hampshire, United States, 03079



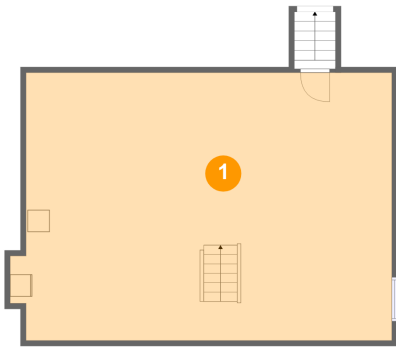
Room dimensions

Floor 3 Total:1527sqft    Excluded: 67sqft

#		Max Dimensions	sqft	Included
8	W.I.C.	4'10" x 8'9"	42 sq. ft	Yes
9	Bath	7'7" x 8'9"	54 sq. ft	Yes
10	W.I.C.	8'5" x 6'5"	38 sq. ft	Yes
11	W.I.C.	8'5" x 6'5"	38 sq. ft	Yes
12	Recreation Room	27'6" x 22'11"	492 sq. ft	Yes
13	Office	12'1" x 12'4"	141 sq. ft	Yes
14	Bath	7'10" x 8'9"	57 sq. ft	Yes
15	Primary Bedroom	19'2" x 16'11"	272 sq. ft	Yes
16	Hall	10'0" x 4'0"	58 sq. ft	Yes
17	Bedroom	13'8" x 13'3"	158 sq. ft	Yes

29 Elmwood Avenue, Salem, Rockingham County, New Hampshire, United States, 03079

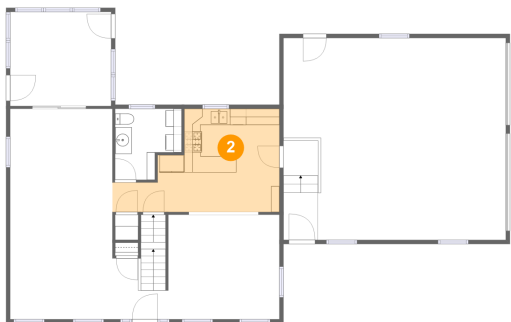
1 Floor 1 - Basement



Max Dimensions: 34'8" x 24'4"  
Calculated Area: 814 sq. ft  
Included: No

Heated: Yes  
Finished: No  
Enclosed: Yes  
Contiguous: Yes  
Permitted: Yes  
Wet space: No  
Addition: No  
Conversion: No

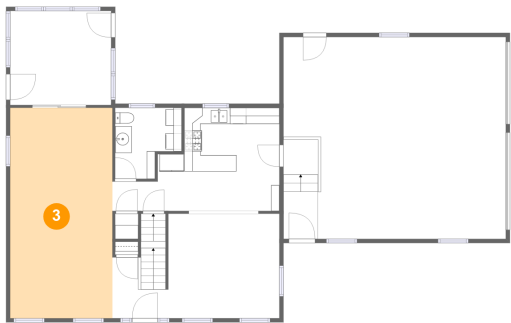
2 Floor 2 - Kitchen



Max Dimensions: 20'7" x 12'9"  
Calculated Area: 193 sq. ft  
Included: Yes

Heated: Yes  
Finished: Yes  
Enclosed: Yes  
Contiguous: Yes  
Permitted: Yes  
Wet space: No  
Addition: No  
Conversion: No

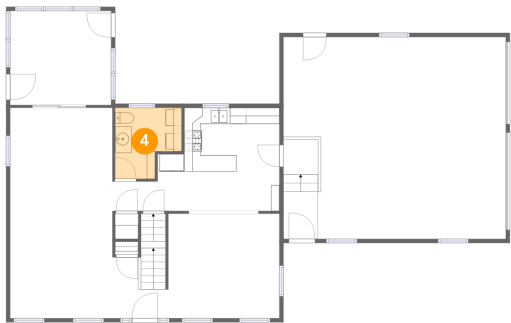
3 Floor 2 - Living Room



Max Dimensions: 12'8" x 25'11"  
Calculated Area: 328 sq. ft  
Included: Yes

Heated: Yes  
Finished: Yes  
Enclosed: Yes  
Contiguous: Yes  
Permitted: Yes  
Wet space: No  
Addition: No  
Conversion: No

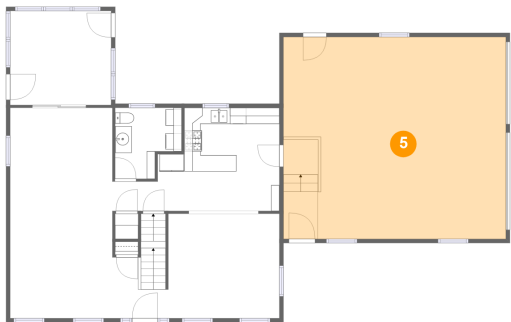
4 Floor 2 - WC



Max Dimensions: 8'3" x 8'9"  
Calculated Area: 61 sq. ft  
Included: Yes

Heated: Yes  
Finished: Yes  
Enclosed: Yes  
Contiguous: Yes  
Permitted: Yes  
Wet space: Yes  
Addition: No  
Conversion: No

5 Floor 2 - Garage

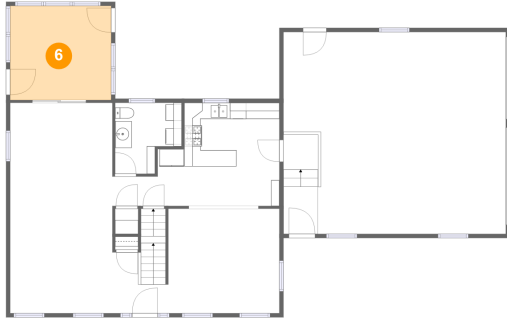


Max Dimensions: 27'5" x 24'11"  
Calculated Area: 684 sq. ft  
Included: No

Heated: No  
Finished: Yes  
Enclosed: Yes  
Contiguous: Yes  
Permitted: Yes  
Wet space: No  
Addition: No  
Conversion: No

29 Elmwood Avenue, Salem, Rockingham County, New Hampshire, United States, 03079

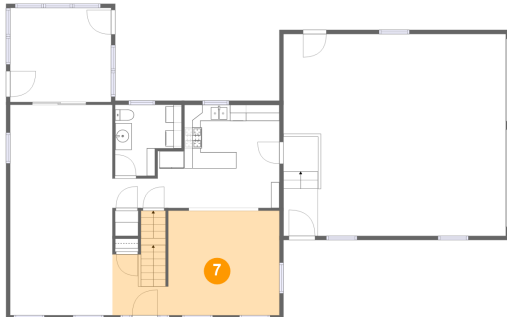
## 6 Floor 2 - Sunroom



Max Dimensions: 12'5" x 11'7"  
Calculated Area: 145 sq. ft  
Included: Yes

Heated: Yes  
Finished: Yes  
Enclosed: Yes  
Contiguous: Yes  
Permitted: Yes  
Wet space: No  
Addition: No  
Conversion: No

## 7 Floor 2 - Dining Area



Max Dimensions: 20'7" x 12'11"  
Calculated Area: 244 sq. ft  
Included: Yes

Heated: Yes  
Finished: Yes  
Enclosed: Yes  
Contiguous: Yes  
Permitted: Yes  
Wet space: No  
Addition: No  
Conversion: No

## 8 Floor 3 - W.I.C.



Max Dimensions: 4'10" x 8'9"  
Calculated Area: 42 sq. ft  
Included: Yes

Heated: Yes  
Finished: Yes  
Enclosed: Yes  
Contiguous: Yes  
Permitted: Yes  
Wet space: No  
Addition: No  
Conversion: No



29 Elmwood Avenue, Salem, Rockingham County, New Hampshire, United States, 03079

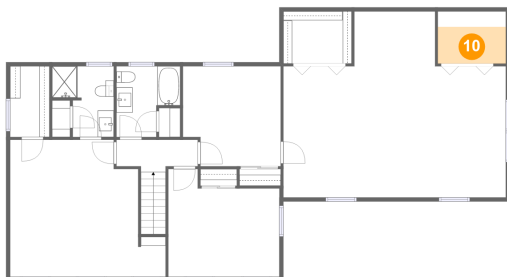
### 9 Floor 3 - Bath



Max Dimensions: 7'7" x 8'9"  
Calculated Area: 54 sq. ft  
Included: Yes

Heated: Yes  
Finished: Yes  
Enclosed: Yes  
Contiguous: Yes  
Permitted: Yes  
Wet space: Yes  
Addition: No  
Conversion: No

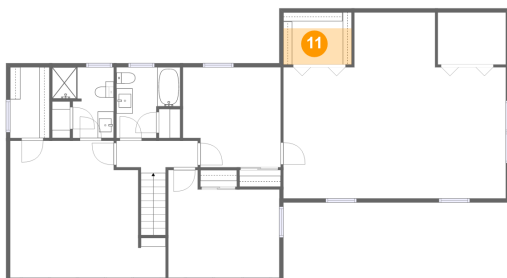
### 10 Floor 3 - W.I.C.



Max Dimensions: 8'5" x 6'5"  
Calculated Area: 38 sq. ft  
Included: Yes

Heated: Yes  
Finished: Yes  
Enclosed: Yes  
Contiguous: Yes  
Permitted: Yes  
Wet space: No  
Addition: No  
Conversion: No

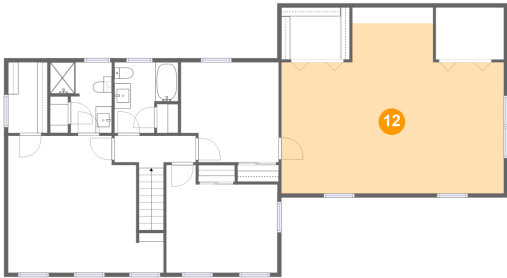
### 11 Floor 3 - W.I.C.



Max Dimensions: 8'5" x 6'5"  
Calculated Area: 38 sq. ft  
Included: Yes

Heated: Yes  
Finished: Yes  
Enclosed: Yes  
Contiguous: Yes  
Permitted: Yes  
Wet space: No  
Addition: No  
Conversion: No

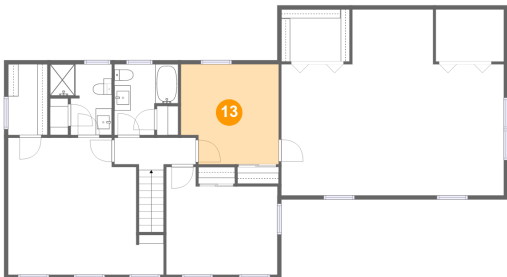
12 Floor 3 - Recreation Room



Max Dimensions: 27'6" x 22'11"  
Calculated Area: 492 sq. ft  
Included: Yes

Heated: Yes  
Finished: Yes  
Enclosed: Yes  
Contiguous: Yes  
Permitted: Yes  
Wet space: No  
Addition: No  
Conversion: No

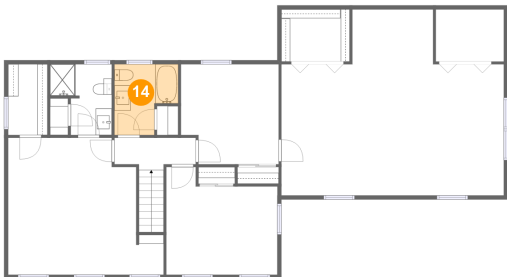
13 Floor 3 - Office



Max Dimensions: 12'1" x 12'4"  
Calculated Area: 141 sq. ft  
Included: Yes

Heated: Yes  
Finished: Yes  
Enclosed: Yes  
Contiguous: Yes  
Permitted: Yes  
Wet space: No  
Addition: No  
Conversion: No

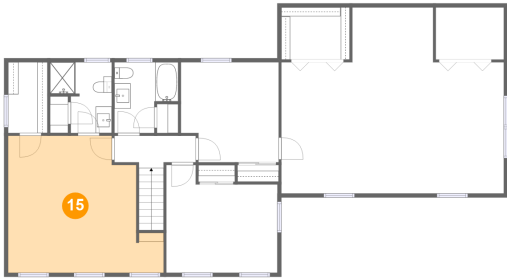
14 Floor 3 - Bath



Max Dimensions: 7'10" x 8'9"  
Calculated Area: 57 sq. ft  
Included: Yes

Heated: Yes  
Finished: Yes  
Enclosed: Yes  
Contiguous: Yes  
Permitted: Yes  
Wet space: Yes  
Addition: No  
Conversion: No

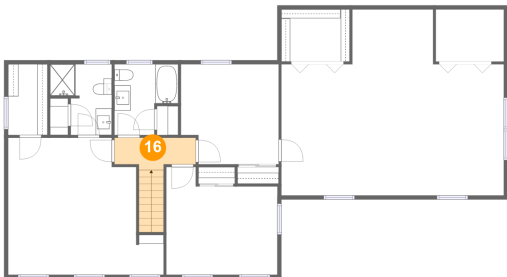
15 Floor 3 - Primary Bedroom



Max Dimensions: 19'2" x 16'11"  
Calculated Area: 272 sq. ft  
Included: Yes

Heated: Yes  
Finished: Yes  
Enclosed: Yes  
Contiguous: Yes  
Permitted: Yes  
Wet space: No  
Addition: No  
Conversion: No

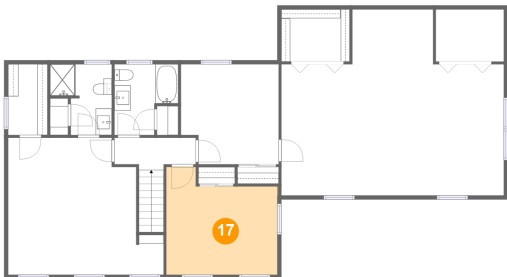
16 Floor 3 - Hall



Max Dimensions: 10'0" x 4'0"  
Calculated Area: 58 sq. ft  
Included: Yes

Heated: Yes  
Finished: Yes  
Enclosed: Yes  
Contiguous: Yes  
Permitted: Yes  
Wet space: No  
Addition: No  
Conversion: No

17 Floor 3 - Bedroom



Max Dimensions: 13'8" x 13'3"  
Calculated Area: 158 sq. ft  
Included: Yes

Heated: Yes  
Finished: Yes  
Enclosed: Yes  
Contiguous: Yes  
Permitted: Yes  
Wet space: No  
Addition: No  
Conversion: No