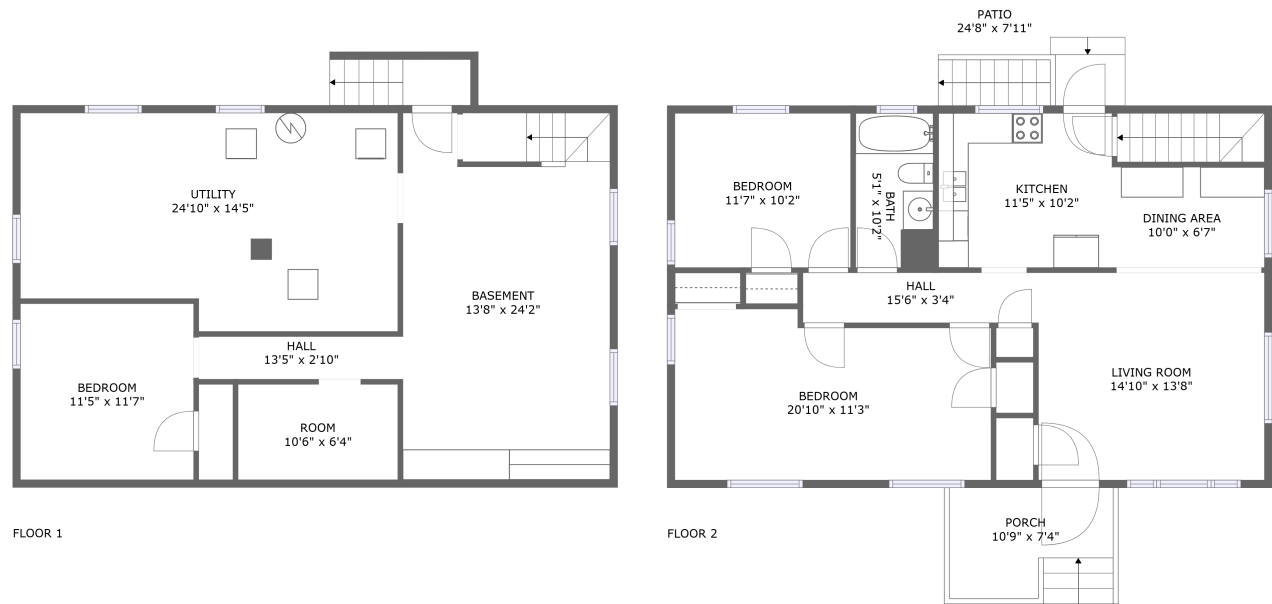


Home report

5620 Barns Avenue, Brooklawn, Hollins, Roanoke, Roanoke County, Virginia, United States, 24019



Total Area: 1003 sq. ft

Floor 1: 0 sq. ft, Floor 2: 1003 sq. ft

Excluded: Room 80 sq. ft, Undefined 58 sq. ft, Bedroom 150 sq. ft, Utility 359 sq. ft, Basement 354 sq. ft, Hall 38 sq. ft, Outdoor Porch 79 sq. ft, Outdoor Patio 186 sq. ft

Property summary

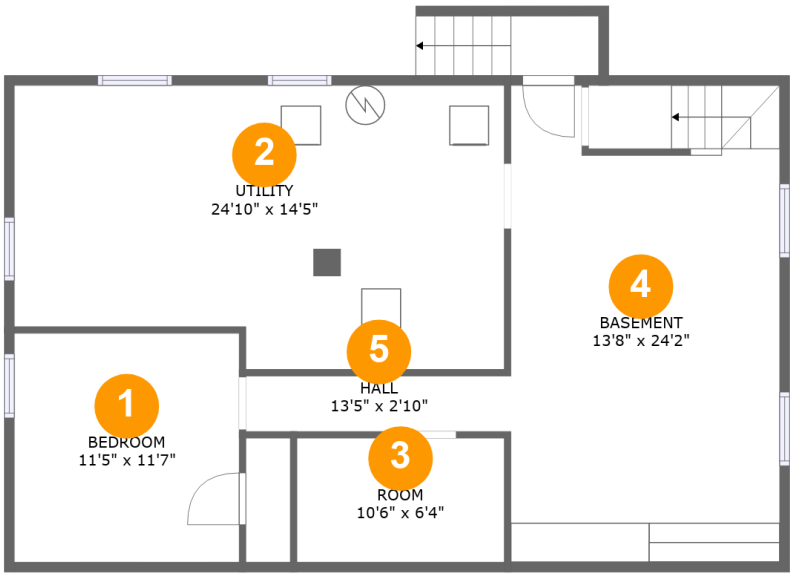
 **2** Floors

 **3** Bedrooms

 **1** Bathrooms

Home report

5620 Barns Avenue, Brooklawn, Hollins, Roanoke, Roanoke County, Virginia, United States, 24019



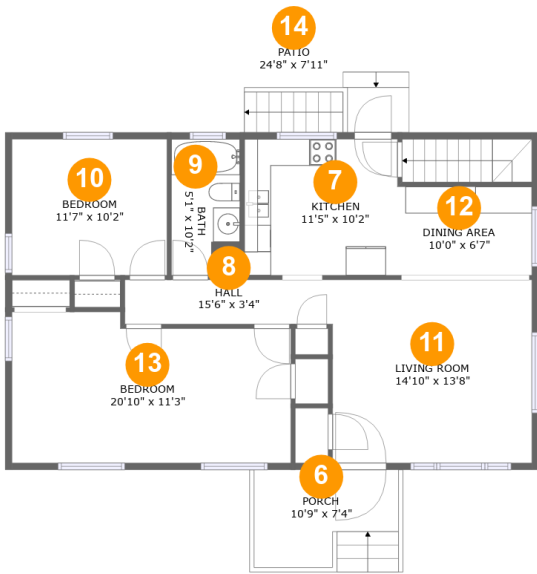
Room dimensions

Floor 1 Total:0sqft Excluded: 1039sqft

#		Max Dimensions	sqft	Included
1	Bedroom	11'5" x 11'7"	133 sq. ft	No
2	Utility	24'10" x 14'5"	333 sq. ft	No
3	Room	10'6" x 6'4"	66 sq. ft	No
4	Basement	13'8" x 24'2"	327 sq. ft	No
5	Hall	13'5" x 2'10"	38 sq. ft	No

Home report

5620 Barns Avenue, Brooklawn, Hollins, Roanoke, Roanoke County, Virginia, United States, 24019



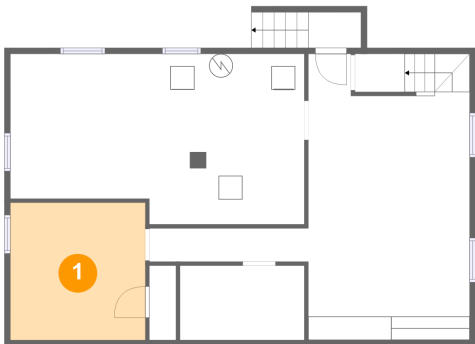
Room dimensions

Floor 2 Total:1003sqft Excluded: 265sqft

#		Max Dimensions	sqft	Included
6	Porch	10'9" x 7'4"	79 sq. ft	No
7	Kitchen	11'5" x 10'2"	116 sq. ft	Yes
8	Hall	15'6" x 3'4"	51 sq. ft	Yes
9	Bath	5'1" x 10'2"	52 sq. ft	Yes
10	Bedroom	11'7" x 10'2"	118 sq. ft	Yes
11	Living Room	14'10" x 13'8"	204 sq. ft	Yes
12	Dining Area	10'0" x 6'7"	66 sq. ft	Yes
13	Bedroom	20'10" x 11'3"	219 sq. ft	Yes
14	Patio	24'8" x 7'11"	186 sq. ft	No

5620 Barns Avenue, Brooklawn, Hollins, Roanoke, Roanoke
County, Virginia, United States, 24019

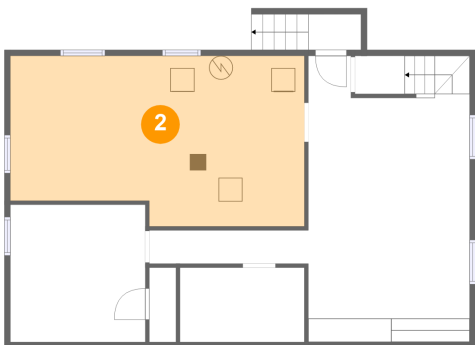
1 Floor 1 - Bedroom



Max Dimensions: 11'5" x 11'7"
Calculated Area: 133 sq. ft
Included: No

Heated: Yes
Finished: No
Enclosed: Yes
Contiguous: Yes
Permitted: Yes
Wet space: No
Addition: No
Conversion: No

2 Floor 1 - Utility

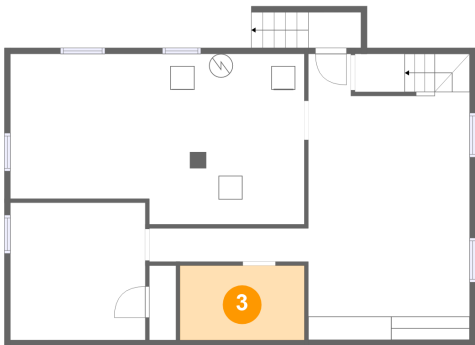


Max Dimensions: 24'10" x 14'5"
Calculated Area: 333 sq. ft
Included: No

Heated: Yes
Finished: No
Enclosed: Yes
Contiguous: Yes
Permitted: Yes
Wet space: No
Addition: No
Conversion: No

5620 Barns Avenue, Brooklawn, Hollins, Roanoke, Roanoke
County, Virginia, United States, 24019

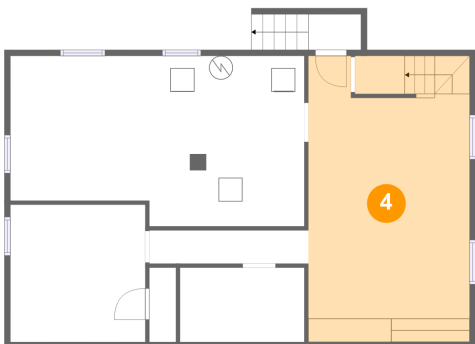
3 Floor 1 - Room



Max Dimensions: 10'6" x 6'4"
Calculated Area: 66 sq. ft
Included: No

Heated: Yes
Finished: No
Enclosed: Yes
Contiguous: Yes
Permitted: Yes
Wet space: No
Addition: No
Conversion: No

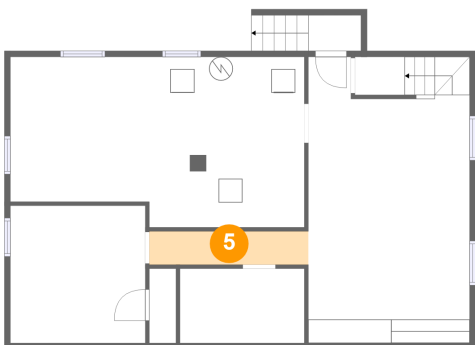
4 Floor 1 - Basement



Max Dimensions: 13'8" x 24'2"
Calculated Area: 327 sq. ft
Included: No

Heated: Yes
Finished: No
Enclosed: Yes
Contiguous: Yes
Permitted: Yes
Wet space: No
Addition: No
Conversion: No

5 Floor 1 - Hall

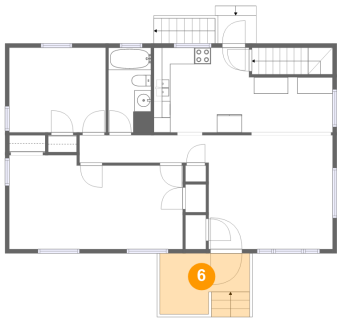


Max Dimensions: 13'5" x 2'10"
Calculated Area: 38 sq. ft
Included: No

Heated: Yes
Finished: Yes
Enclosed: Yes
Contiguous: No
Permitted: Yes
Wet space: No
Addition: No
Conversion: No

5620 Barns Avenue, Brooklawn, Hollins, Roanoke, Roanoke
County, Virginia, United States, 24019

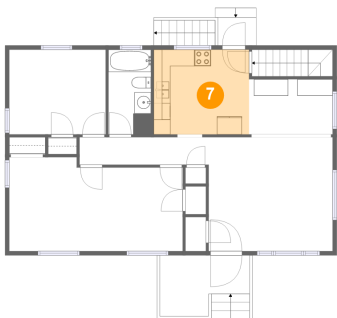
6 Floor 2 - Porch



Max Dimensions: 10'9" x 7'4"
Calculated Area: 79 sq. ft
Included: No

Heated: No
Finished: Yes
Enclosed: No
Contiguous: Yes
Permitted: Yes
Wet space: No
Addition: No
Conversion: No

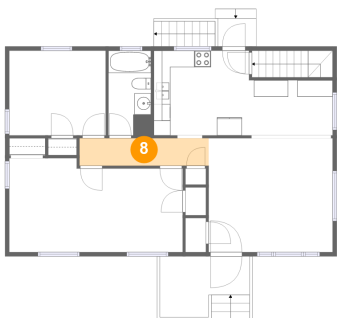
7 Floor 2 - Kitchen



Max Dimensions: 11'5" x 10'2"
Calculated Area: 116 sq. ft
Included: Yes

Heated: Yes
Finished: Yes
Enclosed: Yes
Contiguous: Yes
Permitted: Yes
Wet space: No
Addition: No
Conversion: No

8 Floor 2 - Hall

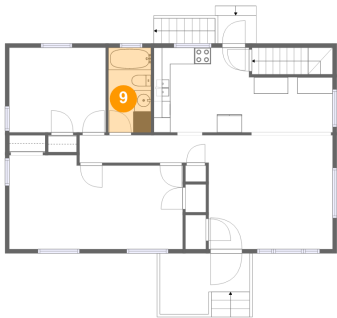


Max Dimensions: 15'6" x 3'4"
Calculated Area: 51 sq. ft
Included: Yes

Heated: Yes
Finished: Yes
Enclosed: Yes
Contiguous: Yes
Permitted: Yes
Wet space: No
Addition: No
Conversion: No

5620 Barns Avenue, Brooklawn, Hollins, Roanoke, Roanoke
County, Virginia, United States, 24019

9 Floor 2 - Bath



Max Dimensions: 5'1" x 10'2"
Calculated Area: 52 sq. ft
Included: Yes

Heated: Yes
Finished: Yes
Enclosed: Yes
Contiguous: Yes
Permitted: Yes
Wet space: Yes
Addition: No
Conversion: No

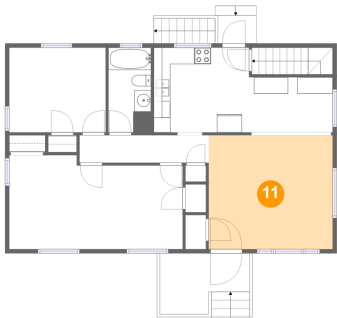
10 Floor 2 - Bedroom



Max Dimensions: 11'7" x 10'2"
Calculated Area: 118 sq. ft
Included: Yes

Heated: Yes
Finished: Yes
Enclosed: Yes
Contiguous: Yes
Permitted: Yes
Wet space: No
Addition: No
Conversion: No

11 Floor 2 - Living Room

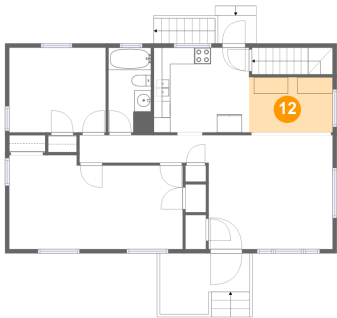


Max Dimensions: 14'10" x 13'8"
Calculated Area: 204 sq. ft
Included: Yes

Heated: Yes
Finished: Yes
Enclosed: Yes
Contiguous: Yes
Permitted: Yes
Wet space: No
Addition: No
Conversion: No

5620 Barns Avenue, Brooklawn, Hollins, Roanoke, Roanoke
County, Virginia, United States, 24019

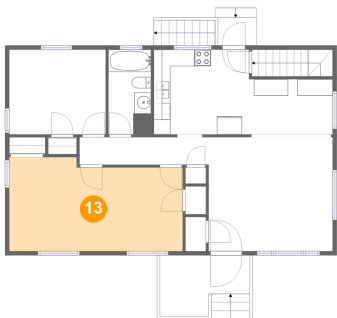
12 Floor 2 - Dining Area



Max Dimensions: 10'0" x 6'7"
Calculated Area: 66 sq. ft
Included: Yes

Heated: Yes
Finished: Yes
Enclosed: Yes
Contiguous: Yes
Permitted: Yes
Wet space: No
Addition: No
Conversion: No

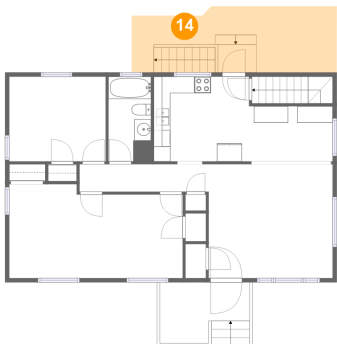
13 Floor 2 - Bedroom



Max Dimensions: 20'10" x 11'3"
Calculated Area: 219 sq. ft
Included: Yes

Heated: Yes
Finished: Yes
Enclosed: Yes
Contiguous: Yes
Permitted: Yes
Wet space: No
Addition: No
Conversion: No

14 Floor 2 - Patio



Max Dimensions: 24'8" x 7'11"
Calculated Area: 186 sq. ft
Included: No

Heated: No
Finished: Yes
Enclosed: No
Contiguous: Yes
Permitted: Yes
Wet space: No
Addition: No
Conversion: No