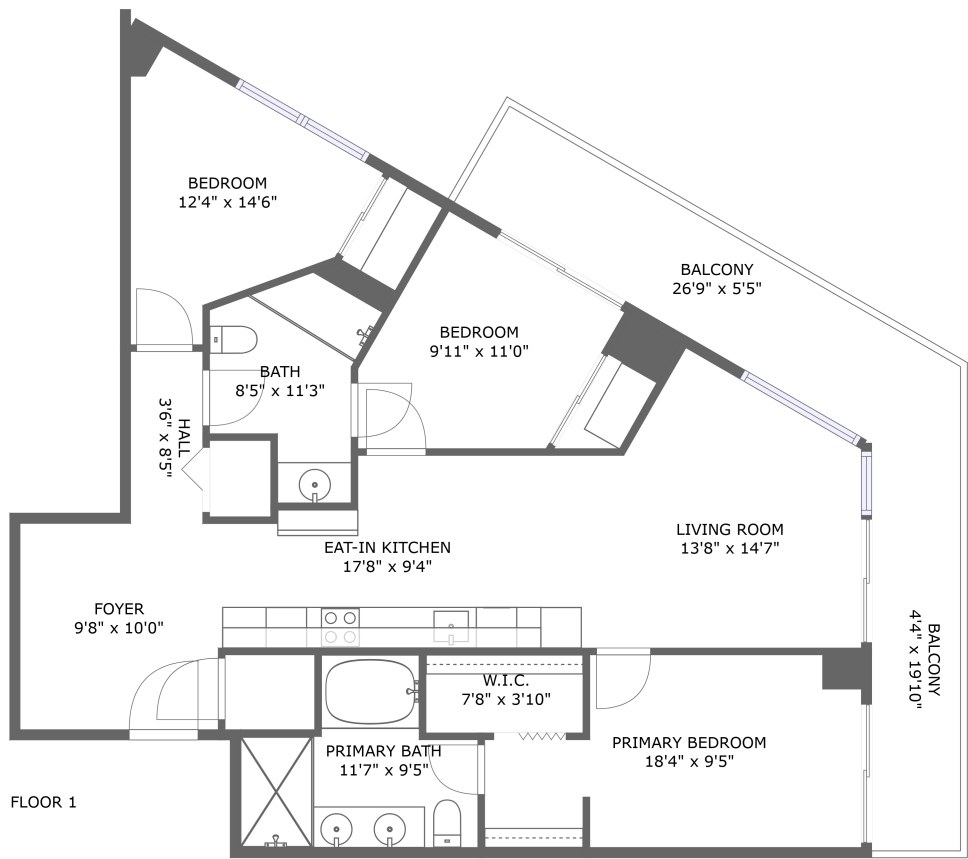


Home report

501 Northeast 31st Street, Miami, Florida 33137, United States,
1201



Total Area: 1079 sq. ft

Floor 1: 1079 sq. ft

Excluded: Outdoor Balcony 225 sq. ft, Walls: 0 sq. ft

Property summary

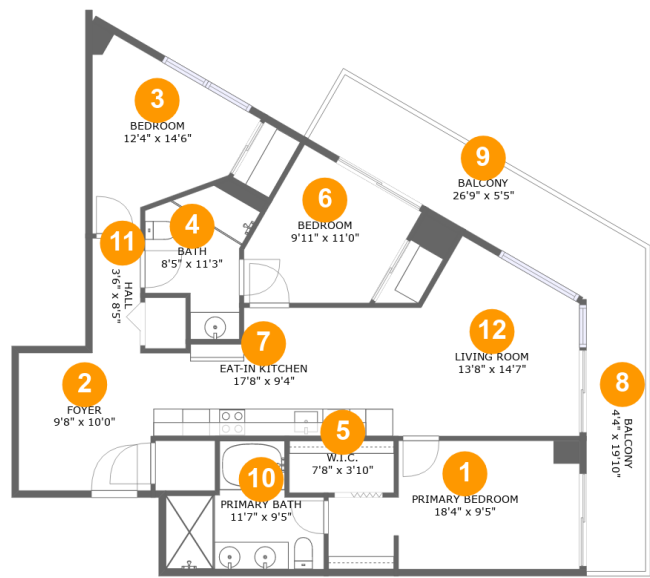
 **1** Floors

 **3** Bedrooms

 **2** Bathrooms

Home report

501 Northeast 31st Street, Miami, Florida 33137, United States, 1201



Room dimensions

Floor 1 Total:1079sqft Excluded: 225sqft

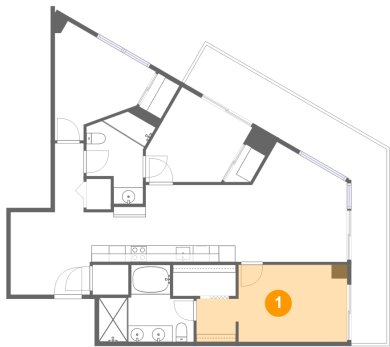
| # | | Max Dimensions | sqft | Included |
|----|-----------------|----------------|------------|----------|
| 1 | Primary Bedroom | 18'4" x 9'5" | 150 sq. ft | Yes |
| 2 | Foyer | 9'8" x 10'0" | 97 sq. ft | Yes |
| 3 | Bedroom | 12'4" x 14'6" | 112 sq. ft | Yes |
| 4 | Bath | 8'5" x 11'3" | 66 sq. ft | Yes |
| 5 | W.I.C. | 7'8" x 3'10" | 29 sq. ft | Yes |
| 6 | Bedroom | 9'11" x 11'0" | 99 sq. ft | Yes |
| 7 | Eat-in Kitchen | 17'8" x 9'4" | 146 sq. ft | Yes |
| 8 | Balcony | 4'4" x 19'10" | 86 sq. ft | No |
| 9 | Balcony | 26'9" x 5'5" | 140 sq. ft | No |
| 10 | Primary Bath | 11'7" x 9'5" | 81 sq. ft | Yes |
| 11 | Hall | 3'6" x 8'5" | 29 sq. ft | Yes |

Home report

501 Northeast 31st Street, Miami, Florida 33137, United States, 1201

| # | | Max Dimensions | sqft | Included |
|----|-------------|----------------|------------|----------|
| 12 | Living Room | 13'8" x 14'7" | 159 sq. ft | Yes |

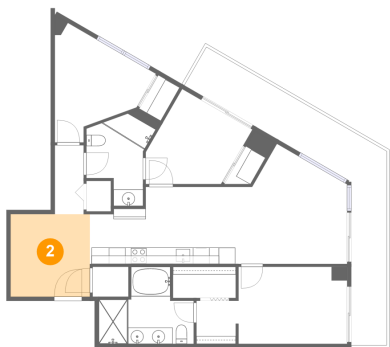
1 Floor 1 - Primary Bedroom



Max Dimensions: 18'4" x 9'5"
Calculated Area: 150 sq. ft
Included: Yes

Heated: Yes
Finished: Yes
Enclosed: Yes
Contiguous: Yes
Permitted: Yes
Wet space: No
Addition: No
Conversion: No

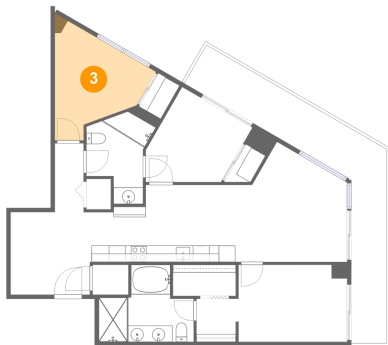
2 Floor 1 - Foyer



Max Dimensions: 9'8" x 10'0"
Calculated Area: 97 sq. ft
Included: Yes

Heated: Yes
Finished: Yes
Enclosed: Yes
Contiguous: Yes
Permitted: Yes
Wet space: No
Addition: No
Conversion: No

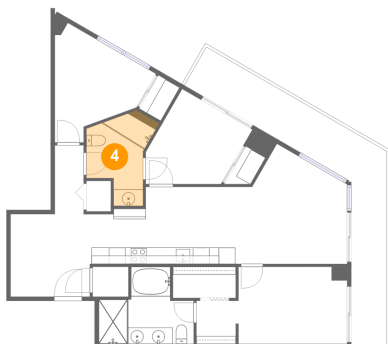
3 Floor 1 - Bedroom



Max Dimensions: 12'4" x 14'6"
Calculated Area: 112 sq. ft
Included: Yes

Heated: Yes
Finished: Yes
Enclosed: Yes
Contiguous: Yes
Permitted: Yes
Wet space: No
Addition: No
Conversion: No

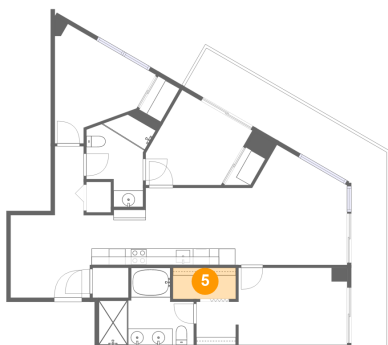
4 Floor 1 - Bath



Max Dimensions: 8'5" x 11'3"
Calculated Area: 66 sq. ft
Included: Yes

Heated: Yes
Finished: Yes
Enclosed: Yes
Contiguous: Yes
Permitted: Yes
Wet space: Yes
Addition: No
Conversion: No

5 Floor 1 - W.I.C.



Max Dimensions: 7'8" x 3'10"
Calculated Area: 29 sq. ft
Included: Yes

Heated: Yes
Finished: Yes
Enclosed: Yes
Contiguous: Yes
Permitted: Yes
Wet space: No
Addition: No
Conversion: No

501 Northeast 31st Street, Miami, Florida 33137, United States,
1201

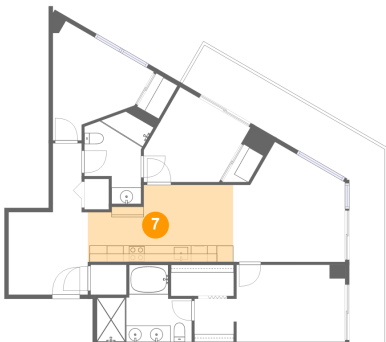
6 Floor 1 - Bedroom



Max Dimensions: 9'11" x 11'0"
Calculated Area: 99 sq. ft
Included: Yes

Heated: Yes
Finished: Yes
Enclosed: Yes
Contiguous: Yes
Permitted: Yes
Wet space: No
Addition: No
Conversion: No

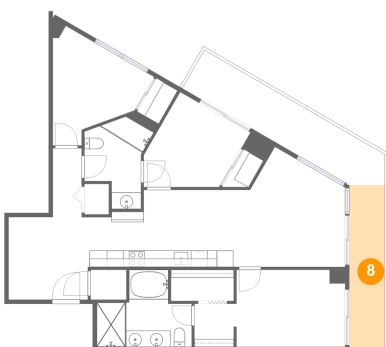
7 Floor 1 - Eat-in Kitchen



Max Dimensions: 17'8" x 9'4"
Calculated Area: 146 sq. ft
Included: Yes

Heated: Yes
Finished: Yes
Enclosed: Yes
Contiguous: Yes
Permitted: Yes
Wet space: No
Addition: No
Conversion: No

8 Floor 1 - Balcony

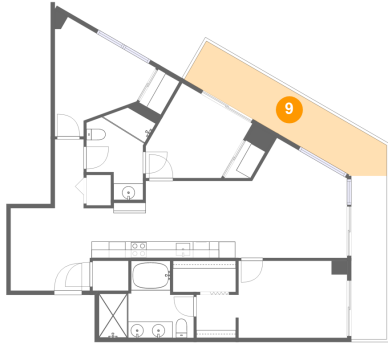


Max Dimensions: 4'4" x 19'10"
Calculated Area: 86 sq. ft
Included: No

Heated: No
Finished: Yes
Enclosed: No
Contiguous: Yes
Permitted: Yes
Wet space: No
Addition: No
Conversion: No

501 Northeast 31st Street, Miami, Florida 33137, United States,
1201

9 Floor 1 - Balcony



Max Dimensions: 26'9" x 5'5"
Calculated Area: 140 sq. ft
Included: No

Heated: No
Finished: Yes
Enclosed: No
Contiguous: Yes
Permitted: Yes
Wet space: No
Addition: No
Conversion: No

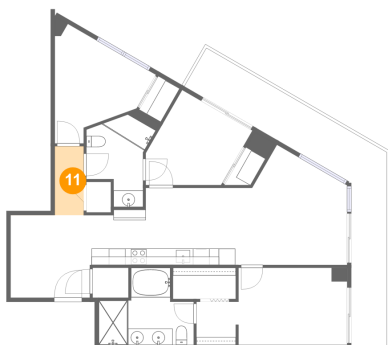
10 Floor 1 - Primary Bath



Max Dimensions: 11'7" x 9'5"
Calculated Area: 81 sq. ft
Included: Yes

Heated: Yes
Finished: Yes
Enclosed: Yes
Contiguous: Yes
Permitted: Yes
Wet space: Yes
Addition: No
Conversion: No

11 Floor 1 - Hall



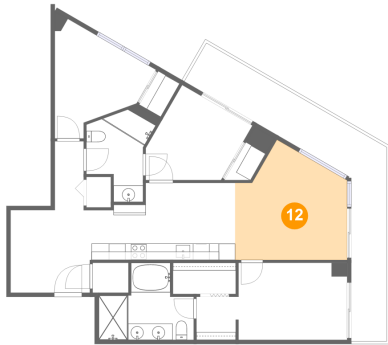
Max Dimensions: 3'6" x 8'5"
Calculated Area: 29 sq. ft
Included: Yes

Heated: Yes
Finished: Yes
Enclosed: Yes
Contiguous: Yes
Permitted: Yes
Wet space: No
Addition: No
Conversion: No

Home report

501 Northeast 31st Street, Miami, Florida 33137, United States,
1201

12 Floor 1 - Living Room



Max Dimensions: 13'8" x
14'7"

Calculated Area: 159 sq. ft

Included: Yes

Heated: Yes

Finished: Yes

Enclosed: Yes

Contiguous:
Yes

Permitted: Yes

Wet space: No

Addition: No

Conversion: No