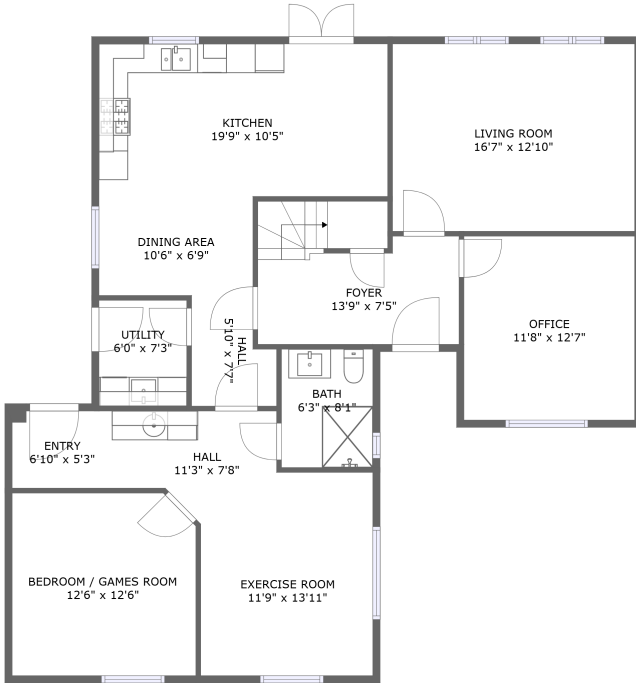
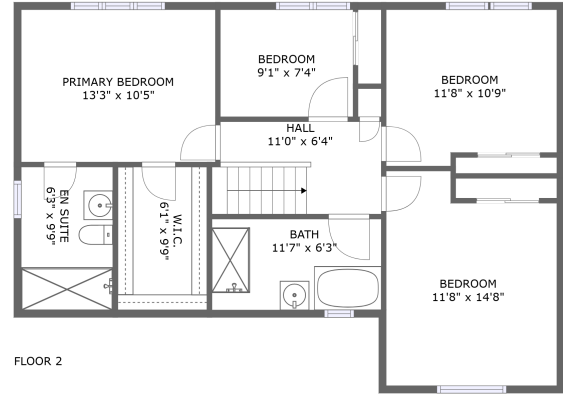


65 Barberry Crescent, Cumbernauld, Glasgow, G68 9GH, United Kingdom



FLOOR 1



FLOOR 2

Property Summary



2 floors



5 bedrooms



3 bathrooms



2,315 total sqft

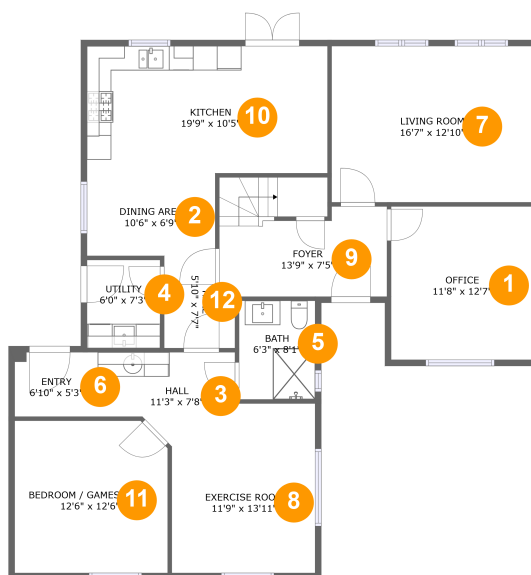


0 garages



2,315 Gross Living Area sqft

65 Barberry Crescent, Cumbernauld, Glasgow, G68 9GH, United Kingdom



Room Dimensions

Floor 1

Total sqft: 1438

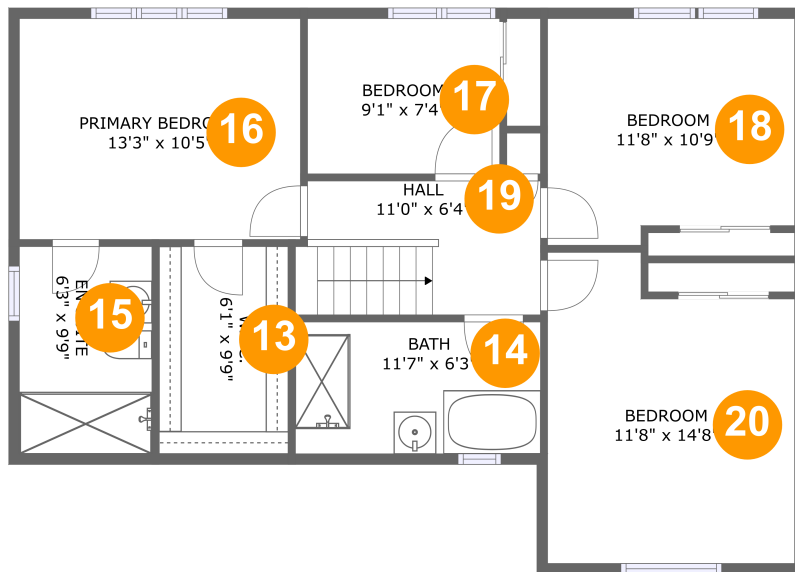
Living area: 1438

#	Room name	Dimensions	Area (sqft)	Counted as Living Area
1	Office	11'8" x 12'7"	147 sq. ft	Yes
2	Dining Area	10'6" x 6'9"	71 sq. ft	Yes
3	Hall	11'3" x 7'8"	66 sq. ft	Yes
4	Utility	6'0" x 7'3"	43 sq. ft	Yes
5	Bath	6'3" x 8'1"	51 sq. ft	Yes
6	Entry	6'10" x 5'3"	35 sq. ft	Yes
7	Living Room	16'7" x 12'10"	212 sq. ft	Yes
8	Exercise Room	11'9" x 13'11"	155 sq. ft	Yes
9	Foyer	13'9" x 7'5"	121 sq. ft	Yes
10	Kitchen	19'9" x 10'5"	206 sq. ft	Yes

**65 Barberry Crescent, Cumbernauld, Glasgow,
G68 9GH, United Kingdom**

#	Room name	Dimensions	Area (sqft)	Counted as Living Area
11	Bedroom / Games Room	12'6" x 12'6"	154 sq. ft	Yes
12	Hall	5'10" x 7'7"	38 sq. ft	Yes

65 Barberry Crescent, Cumbernauld, Glasgow, G68 9GH, United Kingdom



Room Dimensions

Floor 2

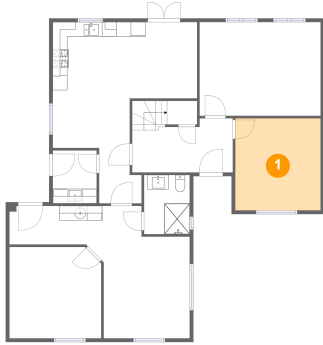
Total sqft: 877

Living area: 877

#	Room name	Dimensions	Area (sqft)	Counted as Living Area
13	W.i.c.	6'1" x 9'9"	60 sq. ft	Yes
14	Bath	11'7" x 6'3"	72 sq. ft	Yes
15	En Suite	6'3" x 9'9"	61 sq. ft	Yes
16	Primary Bedroom	13'3" x 10'5"	139 sq. ft	Yes
17	Bedroom	9'1" x 7'4"	67 sq. ft	Yes
18	Bedroom	11'8" x 10'9"	118 sq. ft	Yes
19	Hall	11'0" x 6'4"	72 sq. ft	Yes
20	Bedroom	11'8" x 14'8"	156 sq. ft	Yes

65 Barberry Crescent, Cumbernauld, Glasgow, G68 9GH, United Kingdom

1 Floor 1 - Office



Dimensions: 11'8" x 12'7"
Area: 147 sq. ft
Counted as Living Area:
Yes

Heated: Yes
Finished: Yes
Enclosed: Yes
Contiguous:
Yes
Permitted: Yes
Wet Space: No
Addition: No
Conversion: No

2 Floor 1 - Dining Area



Dimensions: 10'6" x 6'9"
Area: 71 sq. ft
Counted as Living Area:
Yes

Heated: Yes
Finished: Yes
Enclosed: Yes
Contiguous:
Yes
Permitted: Yes
Wet Space: No
Addition: No
Conversion: No

65 Barberry Crescent, Cumbernauld, Glasgow, G68 9GH, United Kingdom

3 Floor 1 - Hall



Dimensions: 11'3" x 7'8"
Area: 66 sq. ft
Counted as Living Area:
Yes

Heated: Yes
Finished: Yes
Enclosed: Yes
Contiguous:
Yes
Permitted: Yes
Wet Space: No
Addition: No
Conversion: No

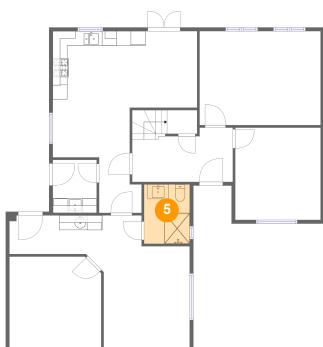
4 Floor 1 - Utility



Dimensions: 6'0" x 7'3"
Area: 43 sq. ft
Counted as Living Area:
Yes

Heated: Yes
Finished: Yes
Enclosed: Yes
Contiguous:
Yes
Permitted: Yes
Wet Space: No
Addition: No
Conversion: No

5 Floor 1 - Bath



Dimensions: 6'3" x 8'1"
Area: 51 sq. ft
Counted as Living Area:
Yes

Heated: Yes
Finished: Yes
Enclosed: Yes
Contiguous:
Yes
Permitted: Yes
Wet Space: Yes
Addition: No
Conversion: No

65 Barberry Crescent, Cumbernauld, Glasgow, G68 9GH, United Kingdom

6 Floor 1 - Entry



Dimensions: 6'10" x 5'3"
Area: 35 sq. ft
Counted as Living Area:
Yes

Heated: Yes
Finished: Yes
Enclosed: Yes
Contiguous:
Yes
Permitted: Yes
Wet Space: No
Addition: No
Conversion: No

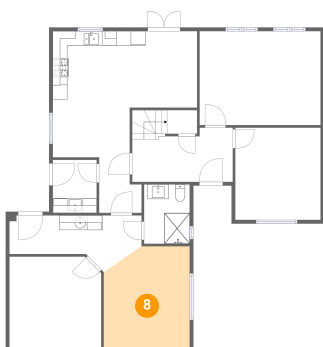
7 Floor 1 - Living Room



Dimensions: 16'7" x 12'10"
Area: 212 sq. ft
Counted as Living Area:
Yes

Heated: Yes
Finished: Yes
Enclosed: Yes
Contiguous:
Yes
Permitted: Yes
Wet Space: No
Addition: No
Conversion: No

8 Floor 1 - Exercise Room

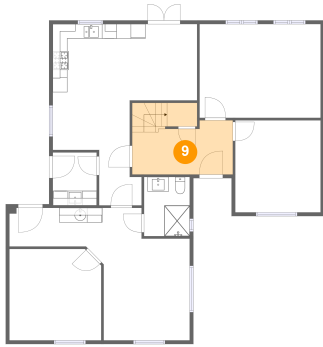


Dimensions: 11'9" x 13'11"
Area: 155 sq. ft
Counted as Living Area:
Yes

Heated: Yes
Finished: Yes
Enclosed: Yes
Contiguous:
Yes
Permitted: Yes
Wet Space: No
Addition: No
Conversion: No

65 Barberry Crescent, Cumbernauld, Glasgow, G68 9GH, United Kingdom

9 Floor 1 - Foyer



Dimensions: 13'9" x 7'5"
Area: 121 sq. ft
Counted as Living Area:
Yes

Heated: Yes
Finished: Yes
Enclosed: Yes
Contiguous:
Yes
Permitted: Yes
Wet Space: No
Addition: No
Conversion: No

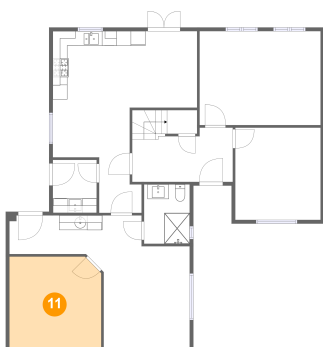
10 Floor 1 - Kitchen



Dimensions: 19'9" x 10'5"
Area: 206 sq. ft
Counted as Living Area:
Yes

Heated: Yes
Finished: Yes
Enclosed: Yes
Contiguous:
Yes
Permitted: Yes
Wet Space: No
Addition: No
Conversion: No

11 Floor 1 - Bedroom / Games Room



Dimensions: 12'6" x 12'6"
Area: 154 sq. ft
Counted as Living Area:
Yes

Heated: Yes
Finished: Yes
Enclosed: Yes
Contiguous:
Yes
Permitted: Yes
Wet Space: No
Addition: No
Conversion: No

65 Barberry Crescent, Cumbernauld, Glasgow, G68 9GH, United Kingdom

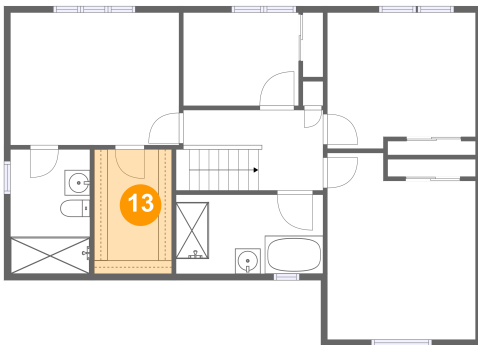
12 Floor 1 - Hall



Dimensions: 5'10" x 7'7"
Area: 38 sq. ft
Counted as Living Area:
Yes

Heated: Yes
Finished: Yes
Enclosed: Yes
Contiguous:
Yes
Permitted: Yes
Wet Space: No
Addition: No
Conversion: No

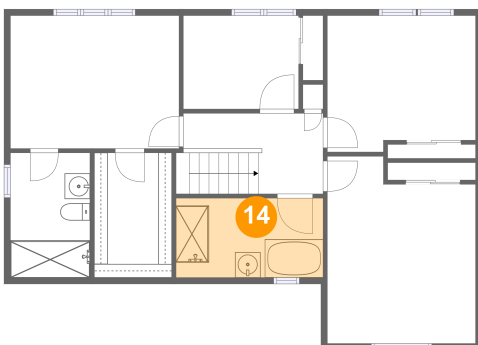
13 Floor 2 - W.i.c.



Dimensions: 6'1" x 9'9"
Area: 60 sq. ft
Counted as Living Area:
Yes

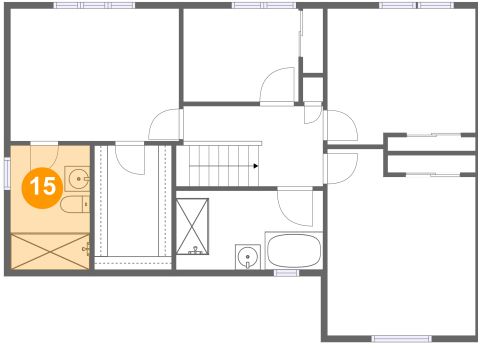
Heated: Yes
Finished: Yes
Enclosed: Yes
Contiguous:
Yes
Permitted: Yes
Wet Space: No
Addition: No
Conversion: No

14 Floor 2 - Bath



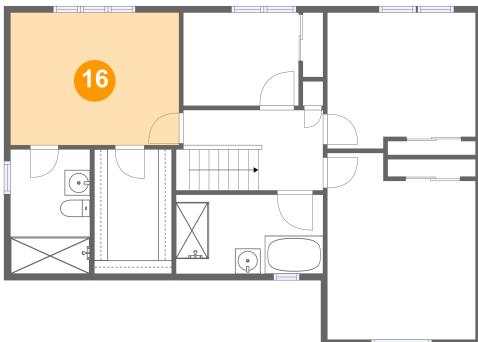
Dimensions: 11'7" x 6'3"
Area: 72 sq. ft
Counted as Living Area:
Yes

Heated: Yes
Finished: Yes
Enclosed: Yes
Contiguous:
Yes
Permitted: Yes
Wet Space: Yes
Addition: No
Conversion: No

**65 Barberry Crescent, Cumbernauld, Glasgow,
G68 9GH, United Kingdom****15 Floor 2 - En Suite**

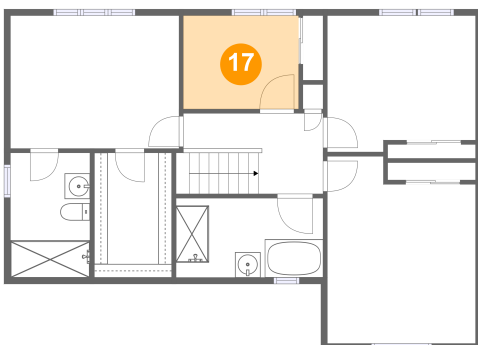
Dimensions: 6'3" x 9'9"
Area: 61 sq. ft
Counted as Living Area:
Yes

Heated: Yes
Finished: Yes
Enclosed: Yes
Contiguous:
Yes
Permitted: Yes
Wet Space: Yes
Addition: No
Conversion: No

16 Floor 2 - Primary Bedroom

Dimensions: 13'3" x 10'5"
Area: 139 sq. ft
Counted as Living Area:
Yes

Heated: Yes
Finished: Yes
Enclosed: Yes
Contiguous:
Yes
Permitted: Yes
Wet Space: No
Addition: No
Conversion: No

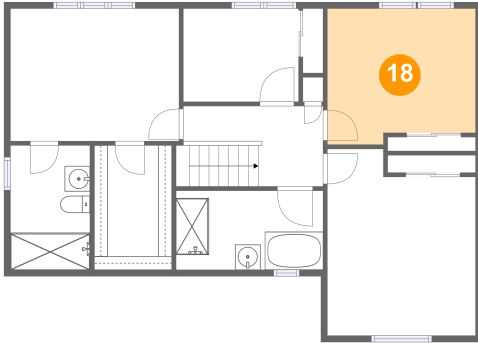
17 Floor 2 - Bedroom

Dimensions: 9'1" x 7'4"
Area: 67 sq. ft
Counted as Living Area:
Yes

Heated: Yes
Finished: Yes
Enclosed: Yes
Contiguous:
Yes
Permitted: Yes
Wet Space: No
Addition: No
Conversion: No

65 Barberry Crescent, Cumbernauld, Glasgow, G68 9GH, United Kingdom

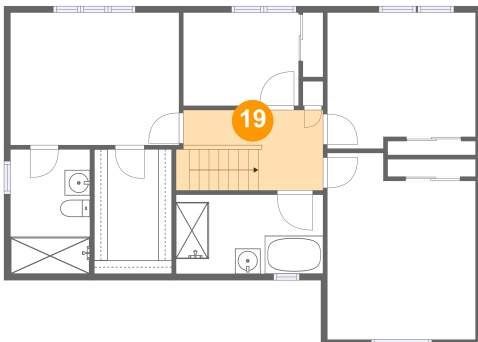
18 Floor 2 - Bedroom



Dimensions: 11'8" x 10'9"
Area: 118 sq. ft
Counted as Living Area:
Yes

Heated: Yes
Finished: Yes
Enclosed: Yes
Contiguous:
Yes
Permitted: Yes
Wet Space: No
Addition: No
Conversion: No

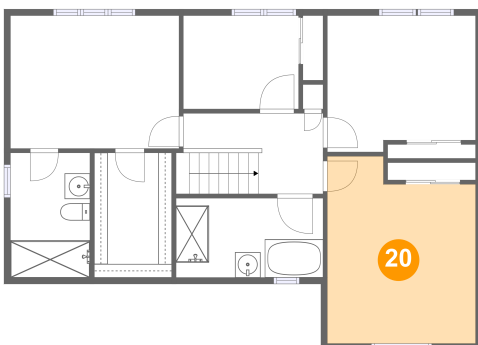
19 Floor 2 - Hall



Dimensions: 11'0" x 6'4"
Area: 72 sq. ft
Counted as Living Area:
Yes

Heated: Yes
Finished: Yes
Enclosed: Yes
Contiguous:
Yes
Permitted: Yes
Wet Space: No
Addition: No
Conversion: No

20 Floor 2 - Bedroom



Dimensions: 11'8" x 14'8"
Area: 156 sq. ft
Counted as Living Area:
Yes

Heated: Yes
Finished: Yes
Enclosed: Yes
Contiguous:
Yes
Permitted: Yes
Wet Space: No
Addition: No
Conversion: No