

Home data report

**9450 South Jamestown Avenue, Tulsa, Tulsa County, Oklahoma,
United States, 74137**



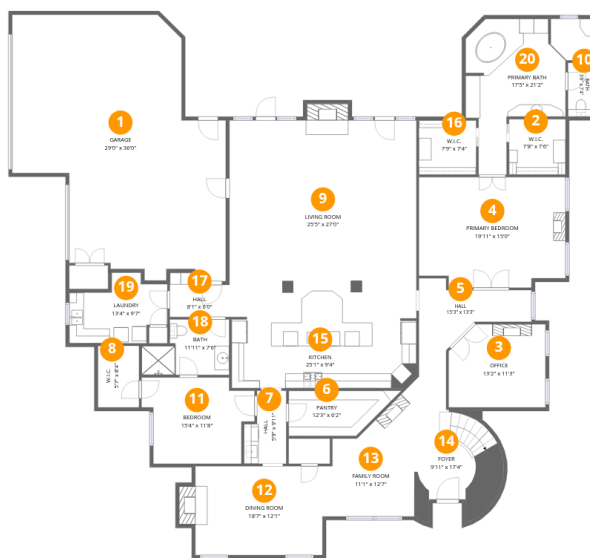
1
Half baths



1
Garages

Home data report

9450 South Jamestown Avenue, Tulsa, Tulsa County, Oklahoma, United States, 74137



Room dimensions

Floor 1

Total:3038sqft Excluded: 844sqft

#		Dimensions	sqft	Counted as living area
1	Garage	29'0" x 36'0"	815 sq. ft	No
2	W.I.C.	7'8" x 7'6"	58 sq. ft	Yes
3	Office	13'2" x 11'3"	142 sq. ft	Yes
4	Primary Bedroom	19'11" x 15'0"	286 sq. ft	Yes
5	Hall	15'3" x 13'3"	106 sq. ft	Yes
6	Pantry	12'3" x 6'2"	75 sq. ft	Yes
7	Hall	5'9" x 9'11"	49 sq. ft	Yes
8	W.I.C.	5'7" x 8'4"	47 sq. ft	Yes
9	Living Room	25'5" x 27'0"	697 sq. ft	Yes
10	Bath	3'6" x 7'4"	26 sq. ft	Yes
11	Bedroom	15'4" x 11'8"	151 sq. ft	Yes

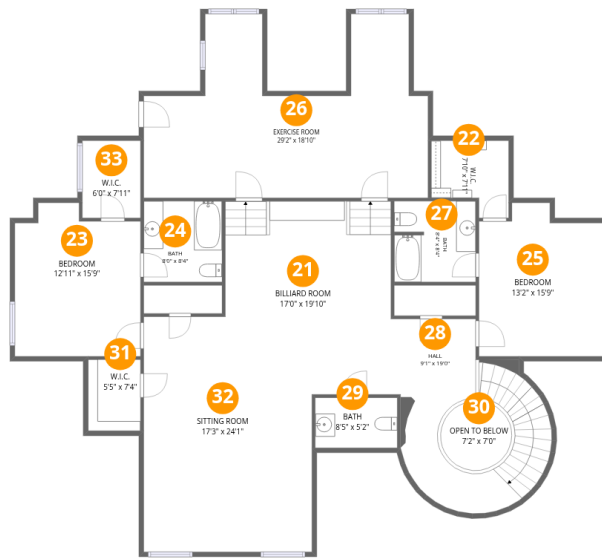
Home data report

**9450 South Jamestown Avenue, Tulsa, Tulsa County, Oklahoma,
United States, 74137**

#		Dimensions	sqft	Counted as living area
12	Dining Room	18'7" x 12'1"	229 sq. ft	Yes
13	Family Room	11'1" x 12'7"	113 sq. ft	Yes
14	Foyer	9'11" x 17'4"	202 sq. ft	Yes
15	Kitchen	25'1" x 9'4"	233 sq. ft	Yes
16	W.I.C.	7'9" x 7'4"	57 sq. ft	Yes
17	Hall	8'1" x 6'0"	40 sq. ft	Yes
18	Bath	11'11" x 7'6"	76 sq. ft	Yes
19	Laundry	13'4" x 9'7"	99 sq. ft	Yes
20	Primary Bath	17'5" x 21'2"	227 sq. ft	Yes

Home data report

9450 South Jamestown Avenue, Tulsa, Tulsa County, Oklahoma, United States, 74137



Room dimensions

Floor 2

Total:2108sqft Excluded: 40sqft

#		Dimensions	sqft	Counted as living area
21	Billiard Room	17'0" x 19'10"	302 sq. ft	Yes
22	W.I.C.	7'10" x 7'11"	53 sq. ft	Yes
23	Bedroom	12'11" x 15'9"	186 sq. ft	Yes
24	Bath	8'0" x 8'4"	67 sq. ft	Yes
25	Bedroom	13'2" x 15'9"	188 sq. ft	Yes
26	Exercise Room	29'2" x 18'10"	404 sq. ft	Yes
27	Bath	8'4" x 8'4"	68 sq. ft	Yes
28	Hall	9'1" x 19'0"	246 sq. ft	Yes
29	Bath	8'5" x 5'2"	43 sq. ft	Yes
30	Open To Below	7'2" x 7'0"	40 sq. ft	No
31	W.I.C.	5'5" x 7'4"	39 sq. ft	Yes

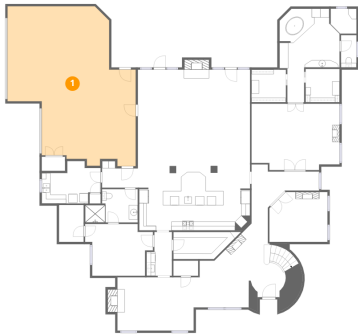
Home data report

**9450 South Jamestown Avenue, Tulsa, Tulsa County, Oklahoma,
United States, 74137**

#		Dimensions	sqft	Counted as living area
32	Sitting Room	17'3" x 24'1"	380 sq. ft	Yes
33	W.I.C.	6'0" x 7'11"	47 sq. ft	Yes

9450 South Jamestown Avenue, Tulsa, Tulsa County, Oklahoma,
United States, 74137

1 Floor 1 - Garage



Dimensions: 29'0" x 36'0"
Area: 815 sq. ft
Counted as living area: No

Heated: No
Finished: No
Enclosed: Yes
Contiguous: Yes
Permitted: Yes
Wet space: No
Addition: No
Conversion: No

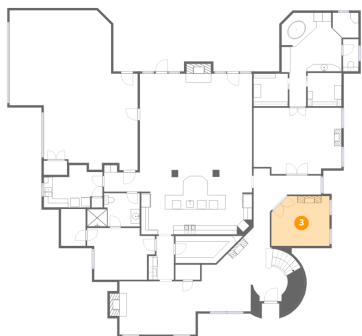
2 Floor 1 - W.I.C.



Dimensions: 7'8" x 7'6"
Area: 58 sq. ft
Counted as living area: Yes

Heated: Yes
Finished: Yes
Enclosed: Yes
Contiguous: Yes
Permitted: Yes
Wet space: No
Addition: No
Conversion: No

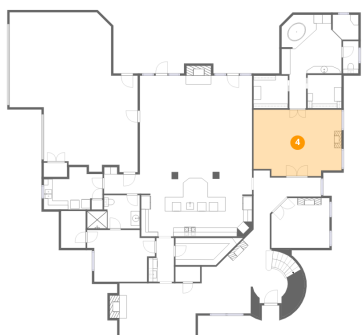
3 Floor 1 - Office



Dimensions: 13'2" x 11'3"
Area: 142 sq. ft
Counted as living area: Yes

Heated: Yes
Finished: Yes
Enclosed: Yes
Contiguous: Yes
Permitted: Yes
Wet space: No
Addition: No
Conversion: No

4 Floor 1 - Primary Bedroom



Dimensions: 19'11" x 15'0"
Area: 286 sq. ft
Counted as living area: Yes

Heated: Yes
Finished: Yes
Enclosed: Yes
Contiguous: Yes
Permitted: Yes
Wet space: No
Addition: No
Conversion: No

5 Floor 1 - Hall



Dimensions: 15'3" x 13'3"
Area: 106 sq. ft
Counted as living area: Yes

Heated: Yes
Finished: Yes
Enclosed: Yes
Contiguous: Yes
Permitted: Yes
Wet space: No
Addition: No
Conversion: No

6 Floor 1 - Pantry



Dimensions: 12'3" x 6'2"
Area: 75 sq. ft
Counted as living area: Yes

Heated: Yes
Finished: Yes
Enclosed: Yes
Contiguous: Yes
Permitted: Yes
Wet space: No
Addition: No
Conversion: No

7 Floor 1 - Hall



Dimensions: 5'9" x 9'11"
Area: 49 sq. ft
Counted as living area: Yes

Heated: Yes
Finished: Yes
Enclosed: Yes
Contiguous: Yes
Permitted: Yes
Wet space: No
Addition: No
Conversion: No

8 Floor 1 - W.I.C.

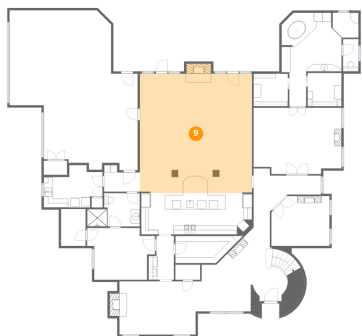


Dimensions: 5'7" x 8'4"
Area: 47 sq. ft
Counted as living area: Yes

Heated: Yes
Finished: Yes
Enclosed: Yes
Contiguous: Yes
Permitted: Yes
Wet space: No
Addition: No
Conversion: No

9450 South Jamestown Avenue, Tulsa, Tulsa County, Oklahoma, United States, 74137

9 Floor 1 - Living Room



Dimensions: 25'5" x 27'0"
Area: 697 sq. ft
Counted as living area: Yes

Heated: Yes
Finished: Yes
Enclosed: Yes
Contiguous: Yes
Permitted: Yes
Wet space: No
Addition: No
Conversion: No

10 Floor 1 - Bath



Dimensions: 3'6" x 7'4"
Area: 26 sq. ft
Counted as living area: Yes

Heated: Yes
Finished: Yes
Enclosed: Yes
Contiguous: Yes
Permitted: Yes
Wet space: Yes
Addition: No
Conversion: No

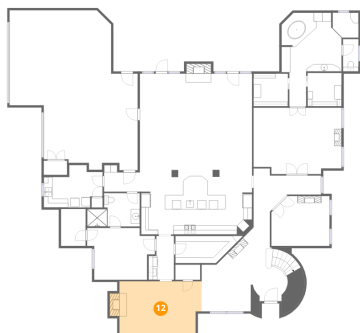
11 Floor 1 - Bedroom



Dimensions: 15'4" x 11'8"
Area: 151 sq. ft
Counted as living area: Yes

Heated: Yes
Finished: Yes
Enclosed: Yes
Contiguous: Yes
Permitted: Yes
Wet space: No
Addition: No
Conversion: No

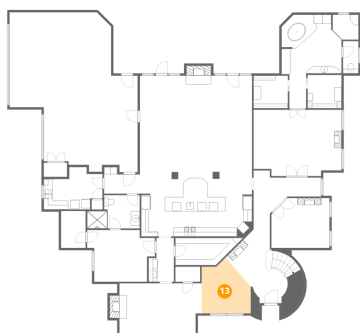
12 Floor 1 - Dining Room



Dimensions: 18'7" x 12'1"
Area: 229 sq. ft
Counted as living area: Yes

Heated: Yes
Finished: Yes
Enclosed: Yes
Contiguous: Yes
Permitted: Yes
Wet space: No
Addition: No
Conversion: No

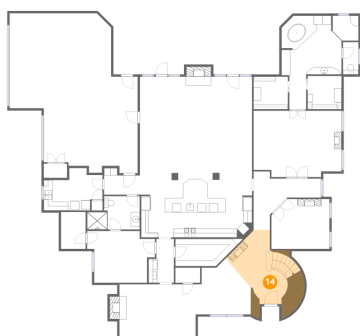
13 Floor 1 - Family Room



Dimensions: 11'1" x 12'7"
Area: 113 sq. ft
Counted as living area: Yes

Heated: Yes
Finished: Yes
Enclosed: Yes
Contiguous: Yes
Permitted: Yes
Wet space: No
Addition: No
Conversion: No

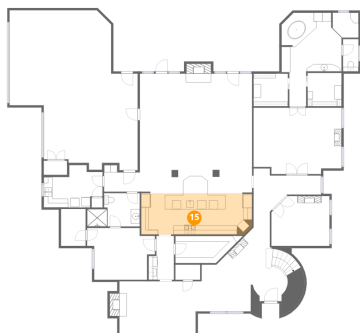
14 Floor 1 - Foyer



Dimensions: 9'11" x 17'4"
Area: 202 sq. ft
Counted as living area: Yes

Heated: Yes
Finished: Yes
Enclosed: Yes
Contiguous: Yes
Permitted: Yes
Wet space: No
Addition: No
Conversion: No

15 Floor 1 - Kitchen



Dimensions: 25'1" x 9'4"
Area: 233 sq. ft
Counted as living area: Yes

Heated: Yes
Finished: Yes
Enclosed: Yes
Contiguous: Yes
Permitted: Yes
Wet space: No
Addition: No
Conversion: No

16 Floor 1 - W.I.C.



Dimensions: 7'9" x 7'4"
Area: 57 sq. ft
Counted as living area: Yes

Heated: Yes
Finished: Yes
Enclosed: Yes
Contiguous: Yes
Permitted: Yes
Wet space: No
Addition: No
Conversion: No

17 Floor 1 - Hall



Dimensions: 8'1" x 6'0"
Area: 40 sq. ft
Counted as living area: Yes

Heated: Yes
Finished: Yes
Enclosed: Yes
Contiguous: Yes
Permitted: Yes
Wet space: No
Addition: No
Conversion: No

9450 South Jamestown Avenue, Tulsa, Tulsa County, Oklahoma,
United States, 74137

18 Floor 1 - Bath



Dimensions: 11'11" x 7'6"
Area: 76 sq. ft
Counted as living area: Yes

Heated: Yes
Finished: Yes
Enclosed: Yes
Contiguous: Yes
Permitted: Yes
Wet space: Yes
Addition: No
Conversion: No

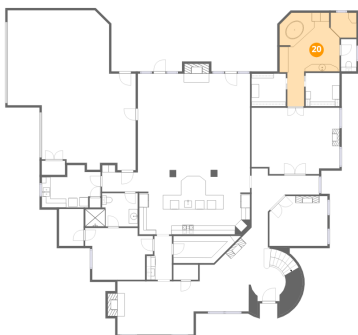
19 Floor 1 - Laundry



Dimensions: 13'4" x 9'7"
Area: 99 sq. ft
Counted as living area: Yes

Heated: Yes
Finished: Yes
Enclosed: Yes
Contiguous: Yes
Permitted: Yes
Wet space: No
Addition: No
Conversion: No

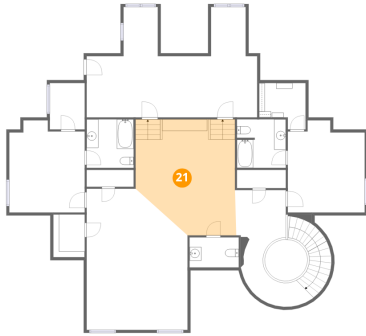
20 Floor 1 - Primary Bath



Dimensions: 17'5" x 21'2"
Area: 227 sq. ft
Counted as living area: Yes

Heated: Yes
Finished: Yes
Enclosed: Yes
Contiguous: Yes
Permitted: Yes
Wet space: Yes
Addition: No
Conversion: No

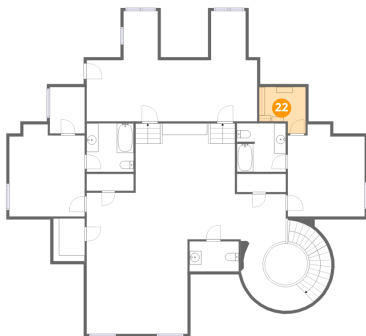
21 Floor 2 - Billiard Room



Dimensions: 17'0" x 19'10"
Area: 302 sq. ft
Counted as living area: Yes

Heated: Yes
Finished: Yes
Enclosed: Yes
Contiguous: Yes
Permitted: Yes
Wet space: No
Addition: No
Conversion: No

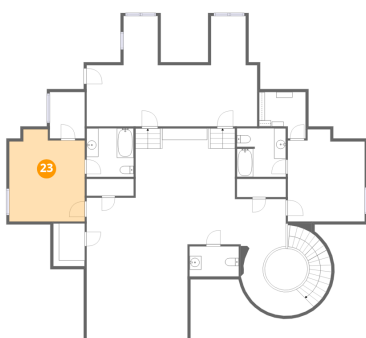
22 Floor 2 - W.I.C.



Dimensions: 7'10" x 7'11"
Area: 53 sq. ft
Counted as living area: Yes

Heated: Yes
Finished: Yes
Enclosed: Yes
Contiguous: Yes
Permitted: Yes
Wet space: No
Addition: No
Conversion: No

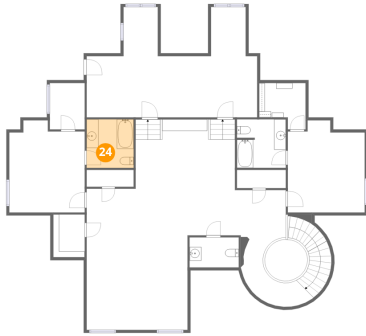
23 Floor 2 - Bedroom



Dimensions: 12'11" x 15'9"
Area: 186 sq. ft
Counted as living area: Yes

Heated: Yes
Finished: Yes
Enclosed: Yes
Contiguous: Yes
Permitted: Yes
Wet space: No
Addition: No
Conversion: No

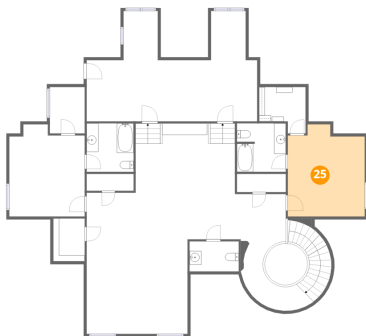
24 Floor 2 - Bath



Dimensions: 8'0" x 8'4"
Area: 67 sq. ft
Counted as living area: Yes

Heated: Yes
Finished: Yes
Enclosed: Yes
Contiguous: Yes
Permitted: Yes
Wet space: Yes
Addition: No
Conversion: No

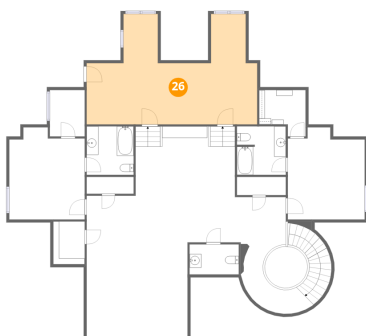
25 Floor 2 - Bedroom



Dimensions: 13'2" x 15'9"
Area: 188 sq. ft
Counted as living area: Yes

Heated: Yes
Finished: Yes
Enclosed: Yes
Contiguous: Yes
Permitted: Yes
Wet space: No
Addition: No
Conversion: No

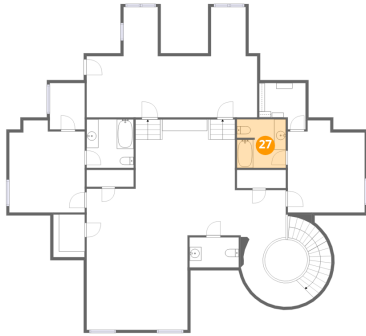
26 Floor 2 - Exercise Room



Dimensions: 29'2" x 18'10"
Area: 404 sq. ft
Counted as living area: Yes

Heated: Yes
Finished: Yes
Enclosed: Yes
Contiguous: Yes
Permitted: Yes
Wet space: No
Addition: No
Conversion: No

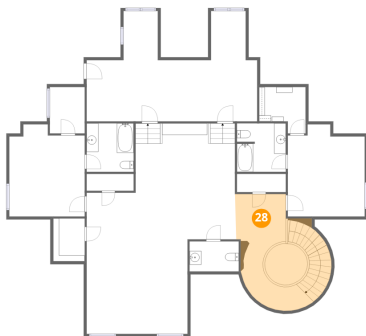
27 Floor 2 - Bath



Dimensions: 8'4" x 8'4"
Area: 68 sq. ft
Counted as living area: Yes

Heated: Yes
Finished: Yes
Enclosed: Yes
Contiguous: Yes
Permitted: Yes
Wet space: Yes
Addition: No
Conversion: No

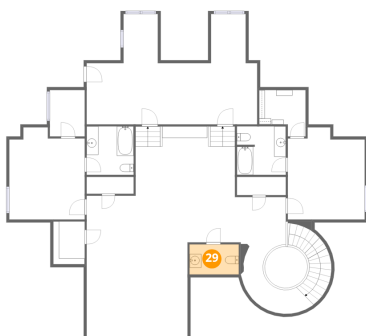
28 Floor 2 - Hall



Dimensions: 9'1" x 19'0"
Area: 246 sq. ft
Counted as living area: Yes

Heated: Yes
Finished: Yes
Enclosed: Yes
Contiguous: Yes
Permitted: Yes
Wet space: No
Addition: No
Conversion: No

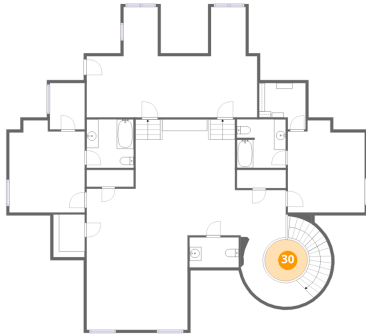
29 Floor 2 - Bath



Dimensions: 8'5" x 5'2"
Area: 43 sq. ft
Counted as living area: Yes

Heated: Yes
Finished: Yes
Enclosed: Yes
Contiguous: Yes
Permitted: Yes
Wet space: Yes
Addition: No
Conversion: No

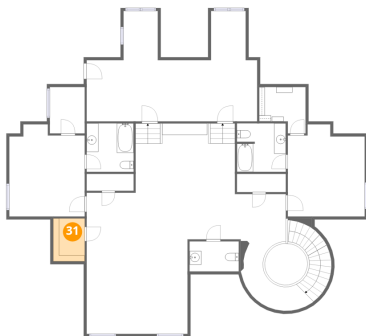
30 Floor 2 - Open To Below



Dimensions: 7'2" x 7'0"
Area: 40 sq. ft
Counted as living area: No

Heated: No
Finished: No
Enclosed: No
Contiguous: Yes
Permitted: No
Wet space: No
Addition: No
Conversion: No

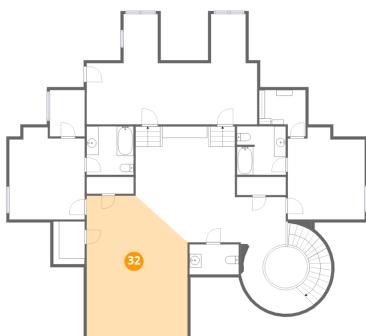
31 Floor 2 - W.I.C.



Dimensions: 5'5" x 7'4"
Area: 39 sq. ft
Counted as living area: Yes

Heated: Yes
Finished: Yes
Enclosed: Yes
Contiguous: Yes
Permitted: Yes
Wet space: No
Addition: No
Conversion: No

32 Floor 2 - Sitting Room



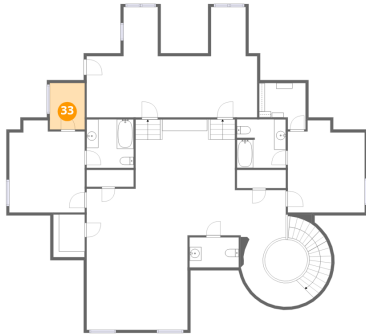
Dimensions: 17'3" x 24'1"
Area: 380 sq. ft
Counted as living area: Yes

Heated: Yes
Finished: Yes
Enclosed: Yes
Contiguous: Yes
Permitted: Yes
Wet space: No
Addition: No
Conversion: No

Home data report

9450 South Jamestown Avenue, Tulsa, Tulsa County, Oklahoma,
United States, 74137

33 Floor 2 - W.I.C.



Dimensions: 6'0" x 7'11"
Area: 47 sq. ft
Counted as living area: Yes

Heated: Yes
Finished: Yes
Enclosed: Yes
Contiguous: Yes
Permitted: Yes
Wet space: No
Addition: No
Conversion: No