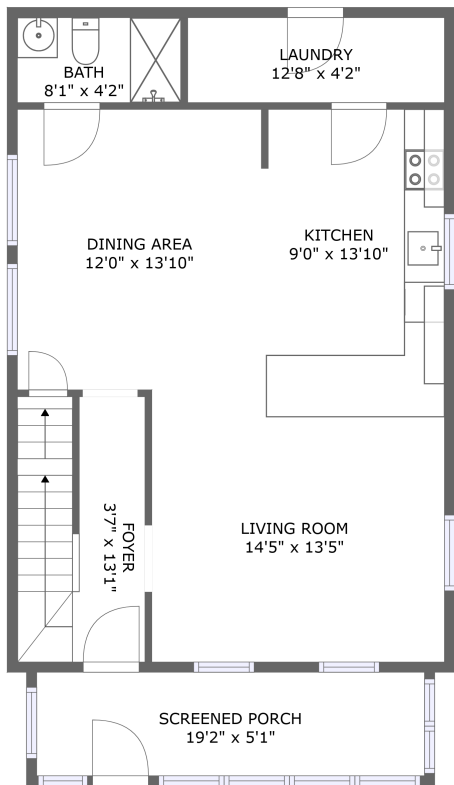
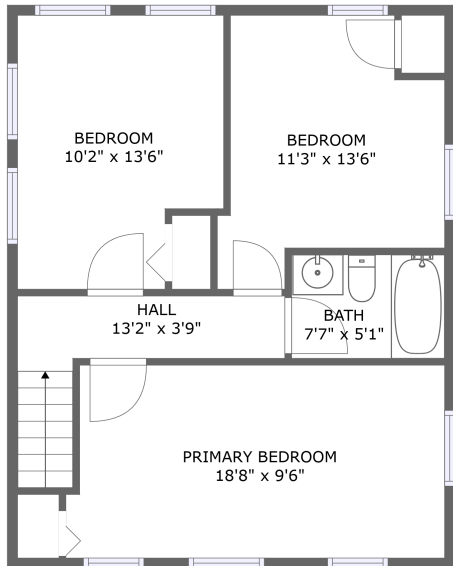


Home report

291 Main Street, Cromwell, Middlesex County, Connecticut,  
United States, 06416



FLOOR 1



FLOOR 2

**Total Area: 1234 sq. ft**  
Floor 1: 670 sq. ft, Floor 2: 564 sq. ft  
Excluded: Screened porch 98 sq. ft, Walls: 117 sq. ft

Property summary

 **2** Floors

 **3** Bedrooms

 **2** Bathrooms

Home report

291 Main Street, Cromwell, Middlesex County, Connecticut,  
United States, 06416

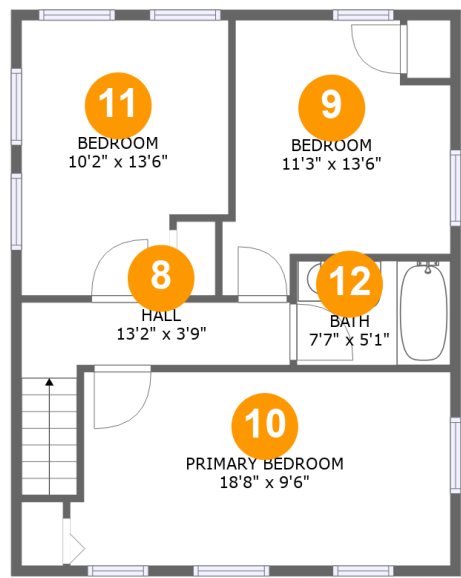


Room dimensions

Floor 1 Total:670sqft Excluded: 98sqft

#		Max Dimensions	sqft	Included
1	Screened Porch	19'2" x 5'1"	98 sq. ft	No
2	Foyer	3'7" x 13'1"	80 sq. ft	Yes
3	Laundry	12'8" x 4'2"	53 sq. ft	Yes
4	Dining Area	12'0" x 13'10"	167 sq. ft	Yes
5	Kitchen	9'0" x 13'10"	124 sq. ft	Yes
6	Living Room	14'5" x 13'5"	194 sq. ft	Yes
7	Bath	8'1" x 4'2"	34 sq. ft	Yes

291 Main Street, Cromwell, Middlesex County, Connecticut,  
United States, 06416



Room dimensions

Floor 2 Total:564sqft    Excluded: 0sqft

#		Max Dimensions	sqft	Included
8	Hall	13'2" x 3'9"	58 sq. ft	Yes
9	Bedroom	11'3" x 13'6"	121 sq. ft	Yes
10	Primary Bedroom	18'8" x 9'6"	173 sq. ft	Yes
11	Bedroom	10'2" x 13'6"	126 sq. ft	Yes
12	Bath	7'7" x 5'1"	39 sq. ft	Yes

291 Main Street, Cromwell, Middlesex County, Connecticut,  
United States, 06416

1 Floor 1 - Screened Porch



Max Dimensions: 19'2" x 5'1"  
Calculated Area: 98 sq. ft  
Included: No

Heated: No  
Finished: Yes  
Enclosed: No  
Contiguous: Yes  
Permitted: Yes  
Wet space: No  
Addition: No  
Conversion: No

2 Floor 1 - Foyer



Max Dimensions: 3'7" x 13'1"  
Calculated Area: 80 sq. ft  
Included: Yes

Heated: Yes  
Finished: Yes  
Enclosed: Yes  
Contiguous: Yes  
Permitted: Yes  
Wet space: No  
Addition: No  
Conversion: No

291 Main Street, Cromwell, Middlesex County, Connecticut,  
United States, 06416

3 Floor 1 - Laundry



Max Dimensions: 12'8" x 4'2"  
Calculated Area: 53 sq. ft  
Included: Yes

Heated: Yes  
Finished: Yes  
Enclosed: Yes  
Contiguous: Yes  
Permitted: Yes  
Wet space: No  
Addition: No  
Conversion: No

4 Floor 1 - Dining Area



Max Dimensions: 12'0" x 13'10"  
Calculated Area: 167 sq. ft  
Included: Yes

Heated: Yes  
Finished: Yes  
Enclosed: Yes  
Contiguous: Yes  
Permitted: Yes  
Wet space: No  
Addition: No  
Conversion: No

5 Floor 1 - Kitchen



Max Dimensions: 9'0" x 13'10"  
Calculated Area: 124 sq. ft  
Included: Yes

Heated: Yes  
Finished: Yes  
Enclosed: Yes  
Contiguous: Yes  
Permitted: Yes  
Wet space: No  
Addition: No  
Conversion: No

291 Main Street, Cromwell, Middlesex County, Connecticut,  
United States, 06416

## 6 Floor 1 - Living Room



Max Dimensions: 14'5" x 13'5"  
Calculated Area: 194 sq. ft  
Included: Yes

Heated: Yes  
Finished: Yes  
Enclosed: Yes  
Contiguous: Yes  
Permitted: Yes  
Wet space: No  
Addition: No  
Conversion: No

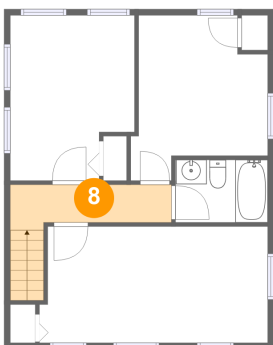
## 7 Floor 1 - Bath



Max Dimensions: 8'1" x 4'2"  
Calculated Area: 34 sq. ft  
Included: Yes

Heated: Yes  
Finished: Yes  
Enclosed: Yes  
Contiguous: Yes  
Permitted: Yes  
Wet space: Yes  
Addition: No  
Conversion: No

## 8 Floor 2 - Hall

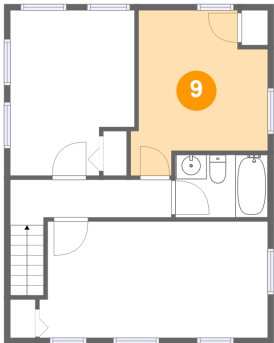


Max Dimensions: 13'2" x 3'9"  
Calculated Area: 58 sq. ft  
Included: Yes

Heated: Yes  
Finished: Yes  
Enclosed: Yes  
Contiguous: Yes  
Permitted: Yes  
Wet space: No  
Addition: No  
Conversion: No

291 Main Street, Cromwell, Middlesex County, Connecticut,  
United States, 06416

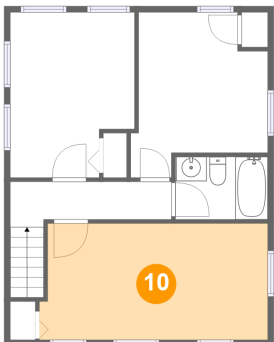
9 Floor 2 - Bedroom



Max Dimensions: 11'3" x 13'6"  
Calculated Area: 121 sq. ft  
Included: Yes

Heated: Yes  
Finished: Yes  
Enclosed: Yes  
Contiguous: Yes  
Permitted: Yes  
Wet space: No  
Addition: No  
Conversion: No

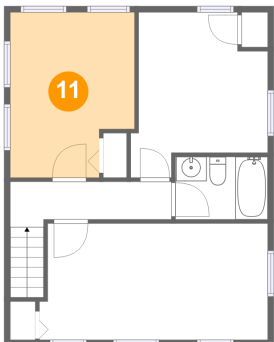
10 Floor 2 - Primary Bedroom



Max Dimensions: 18'8" x 9'6"  
Calculated Area: 173 sq. ft  
Included: Yes

Heated: Yes  
Finished: Yes  
Enclosed: Yes  
Contiguous: Yes  
Permitted: Yes  
Wet space: No  
Addition: No  
Conversion: No

11 Floor 2 - Bedroom

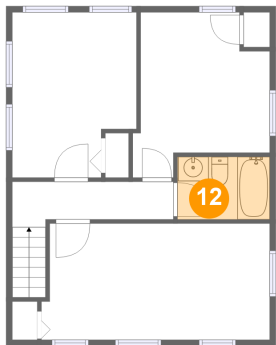


Max Dimensions: 10'2" x 13'6"  
Calculated Area: 126 sq. ft  
Included: Yes

Heated: Yes  
Finished: Yes  
Enclosed: Yes  
Contiguous: Yes  
Permitted: Yes  
Wet space: No  
Addition: No  
Conversion: No

291 Main Street, Cromwell, Middlesex County, Connecticut,  
United States, 06416

**12** Floor 2 - Bath



Max Dimensions: 7'7" x 5'1"  
Calculated Area: 39 sq. ft  
Included: Yes

Heated: Yes  
Finished: Yes  
Enclosed: Yes  
Contiguous: Yes  
Permitted: Yes  
Wet space: Yes  
Addition: No  
Conversion: No