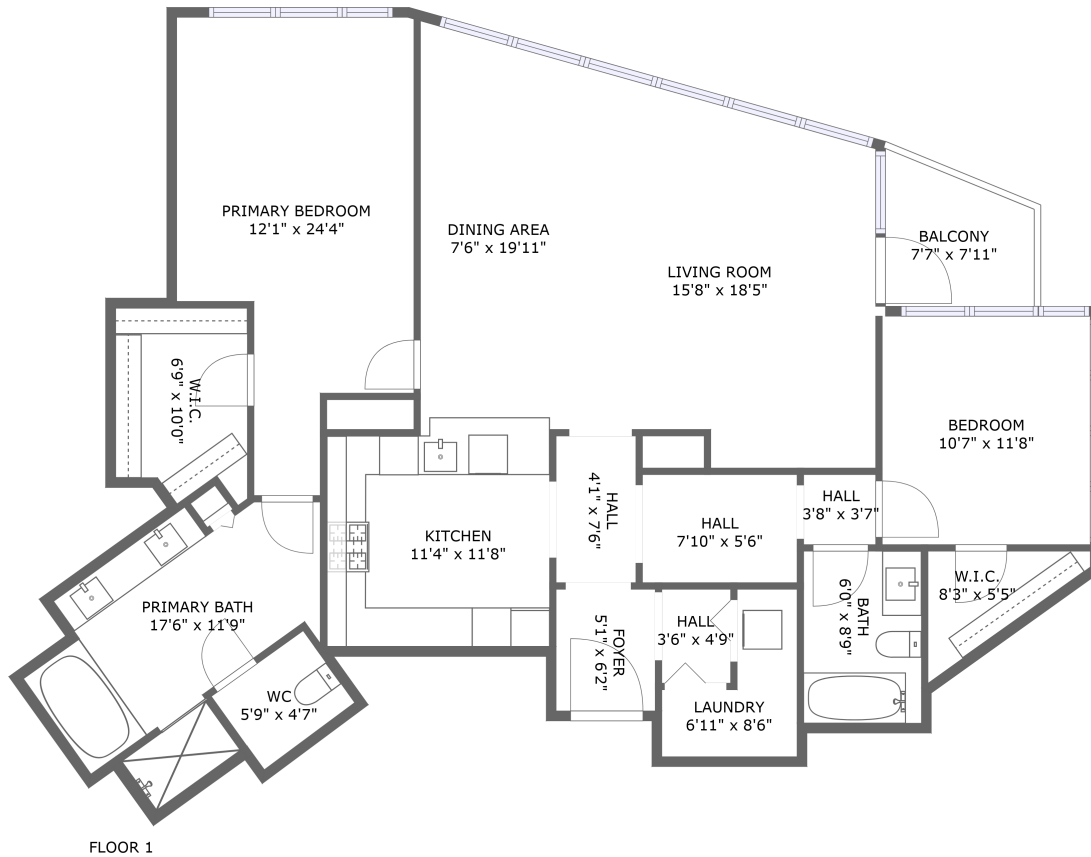



1201 South Prairie Avenue, Prairie District, Chicago, Cook County, Illinois, United States, 60605, 1505



Property summary

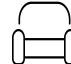
 **0** Garages

 **2** Bedrooms

 **2** Bathrooms

 **0** Half baths

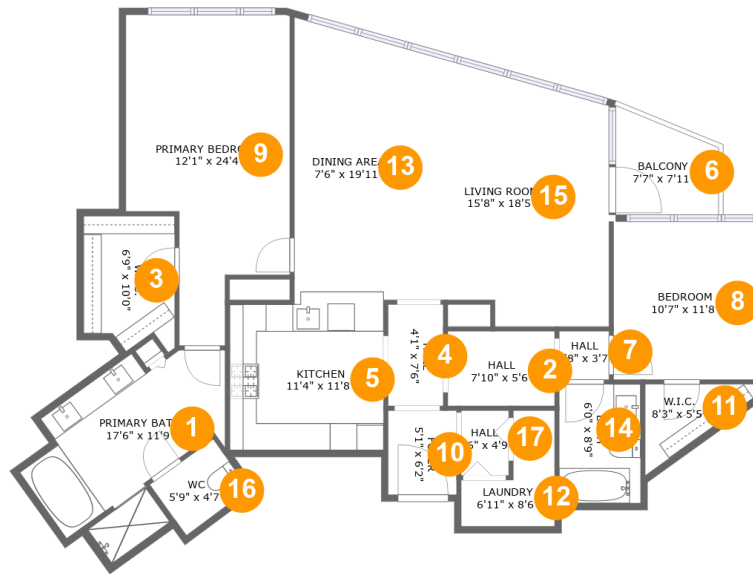
 **1** Floors

 **1,463**
Gross living
area sqft

 **1,512**
Total sqft

Home report

1201 South Prairie Avenue, Prairie District, Chicago, Cook County, Illinois, United States, 60605, 1505



Room dimensions

Floor 1

Total sqft: 1512 Living area: 1463

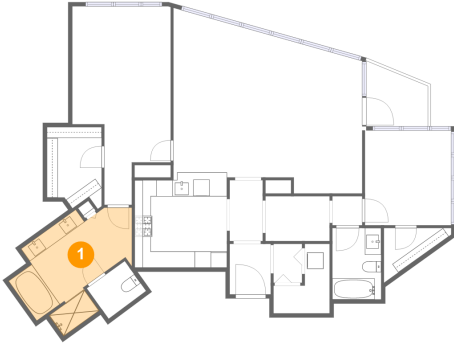
| # | | Dimensions | sqft | Counted as living area |
|----|-----------------|---------------|------------|------------------------|
| 1 | Primary Bath | 17'6" x 11'9" | 136 sq. ft | Yes |
| 2 | Hall | 7'10" x 5'6" | 43 sq. ft | Yes |
| 3 | W.I.C. | 6'9" x 10'0" | 61 sq. ft | Yes |
| 4 | Hall | 4'1" x 7'6" | 30 sq. ft | Yes |
| 5 | Kitchen | 11'4" x 11'8" | 128 sq. ft | Yes |
| 6 | Balcony | 7'7" x 7'11" | 49 sq. ft | No |
| 7 | Hall | 3'8" x 3'7" | 13 sq. ft | Yes |
| 8 | Bedroom | 10'7" x 11'8" | 123 sq. ft | Yes |
| 9 | Primary Bedroom | 12'1" x 24'4" | 230 sq. ft | Yes |
| 10 | Foyer | 5'1" x 6'2" | 31 sq. ft | Yes |
| 11 | W.I.C. | 8'3" x 5'5" | 31 sq. ft | Yes |

**1201 South Prairie Avenue, Prairie District, Chicago,
Cook County, Illinois, United States, 60605, 1505**

| # | | Dimensions | sqft | Counted as living area |
|----|-------------|---------------|------------|------------------------|
| 12 | Laundry | 6'11" x 8'6" | 39 sq. ft | Yes |
| 13 | Dining Area | 7'6" x 19'11" | 144 sq. ft | Yes |
| 14 | Bath | 6'0" x 8'9" | 53 sq. ft | Yes |
| 15 | Living Room | 15'8" x 18'5" | 277 sq. ft | Yes |
| 16 | WC | 5'9" x 4'7" | 26 sq. ft | Yes |
| 17 | Hall | 3'6" x 4'9" | 17 sq. ft | Yes |

1201 South Prairie Avenue, Prairie District, Chicago,
Cook County, Illinois, United States, 60605, 1505

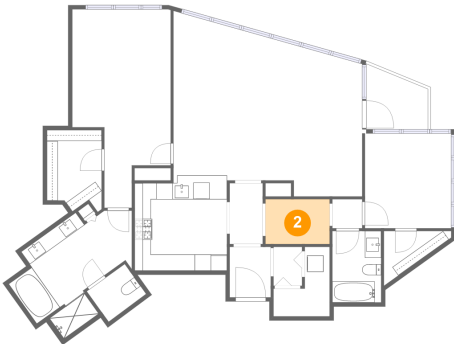
1 Floor 1 - Primary Bath



Dimensions: 17'6" x 11'9"
Area: 136 sq. ft
Counted as living area: Yes

Heated: Yes
Finished: Yes
Enclosed: Yes
Contiguous: Yes
Permitted: Yes
Wet space: Yes
Addition: No
Conversion: No

2 Floor 1 - Hall

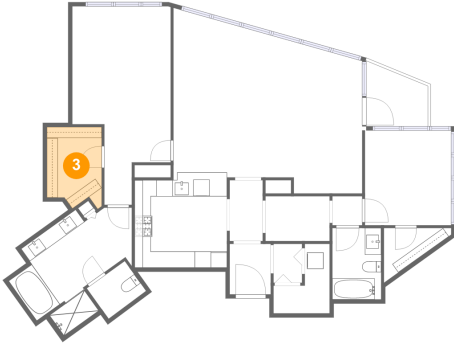


Dimensions: 7'10" x 5'6"
Area: 43 sq. ft
Counted as living area: Yes

Heated: Yes
Finished: Yes
Enclosed: Yes
Contiguous: Yes
Permitted: Yes
Wet space: No
Addition: No
Conversion: No

1201 South Prairie Avenue, Prairie District, Chicago,
Cook County, Illinois, United States, 60605, 1505

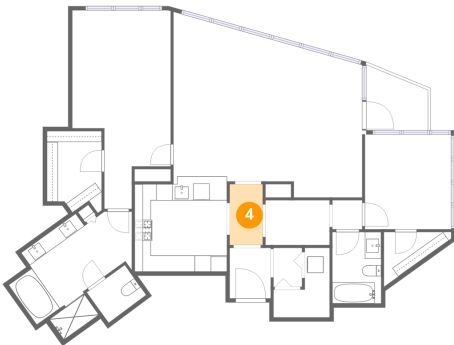
3 Floor 1 - W.I.C.



Dimensions: 6'9" x 10'0"
Area: 61 sq. ft
Counted as living area: Yes

Heated: Yes
Finished: Yes
Enclosed: Yes
Contiguous: Yes
Permitted: Yes
Wet space: No
Addition: No
Conversion: No

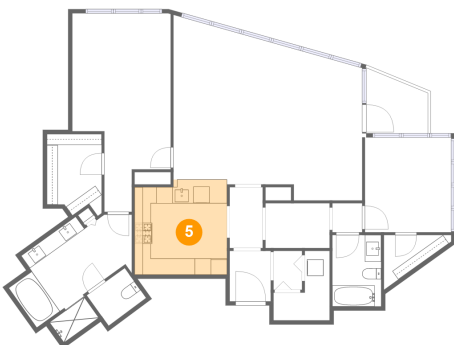
4 Floor 1 - Hall



Dimensions: 4'1" x 7'6"
Area: 30 sq. ft
Counted as living area: Yes

Heated: Yes
Finished: Yes
Enclosed: Yes
Contiguous: Yes
Permitted: Yes
Wet space: No
Addition: No
Conversion: No

5 Floor 1 - Kitchen

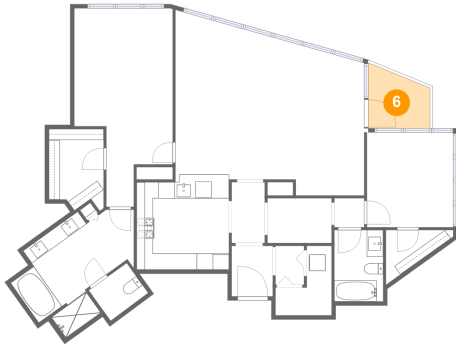


Dimensions: 11'4" x 11'8"
Area: 128 sq. ft
Counted as living area: Yes

Heated: Yes
Finished: Yes
Enclosed: Yes
Contiguous: Yes
Permitted: Yes
Wet space: No
Addition: No
Conversion: No

1201 South Prairie Avenue, Prairie District, Chicago,
Cook County, Illinois, United States, 60605, 1505

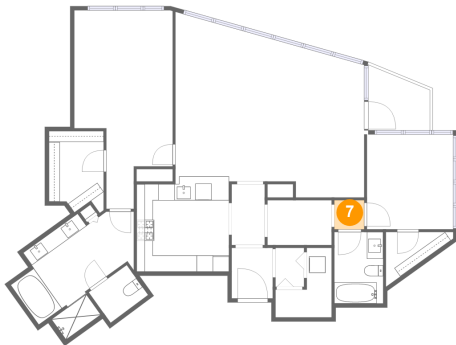
6 Floor 1 - Balcony



Dimensions: 7'7" x 7'11"
Area: 49 sq. ft
Counted as living area: No

Heated: No
Finished: Yes
Enclosed: No
Contiguous: Yes
Permitted: Yes
Wet space: No
Addition: No
Conversion: No

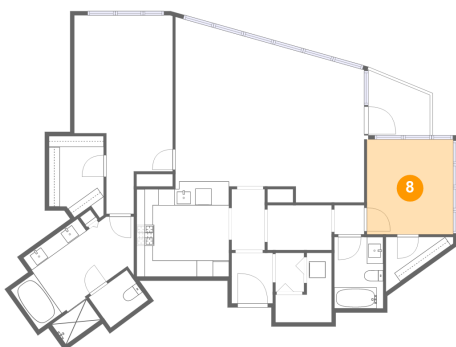
7 Floor 1 - Hall



Dimensions: 3'8" x 3'7"
Area: 13 sq. ft
Counted as living area: Yes

Heated: Yes
Finished: Yes
Enclosed: Yes
Contiguous: Yes
Permitted: Yes
Wet space: No
Addition: No
Conversion: No

8 Floor 1 - Bedroom

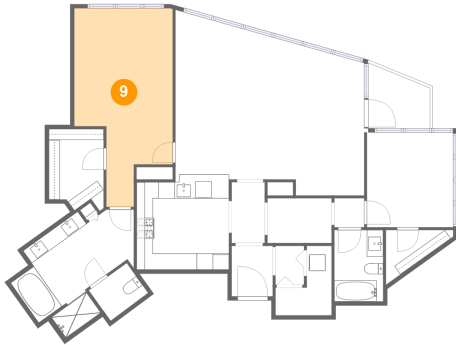


Dimensions: 10'7" x 11'8"
Area: 123 sq. ft
Counted as living area: Yes

Heated: Yes
Finished: Yes
Enclosed: Yes
Contiguous: Yes
Permitted: Yes
Wet space: No
Addition: No
Conversion: No

1201 South Prairie Avenue, Prairie District, Chicago,
Cook County, Illinois, United States, 60605, 1505

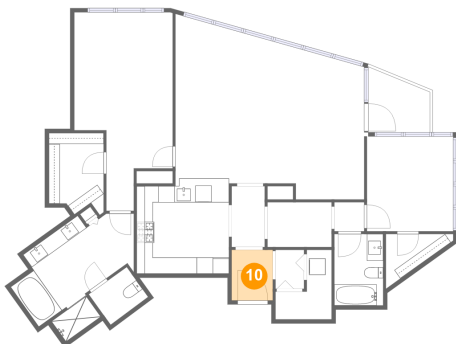
9 Floor 1 - Primary Bedroom



Dimensions: 12'1" x 24'4"
Area: 230 sq. ft
Counted as living area: Yes

Heated: Yes
Finished: Yes
Enclosed: Yes
Contiguous: Yes
Permitted: Yes
Wet space: No
Addition: No
Conversion: No

10 Floor 1 - Foyer



Dimensions: 5'1" x 6'2"
Area: 31 sq. ft
Counted as living area: Yes

Heated: Yes
Finished: Yes
Enclosed: Yes
Contiguous: Yes
Permitted: Yes
Wet space: No
Addition: No
Conversion: No

11 Floor 1 - W.I.C.

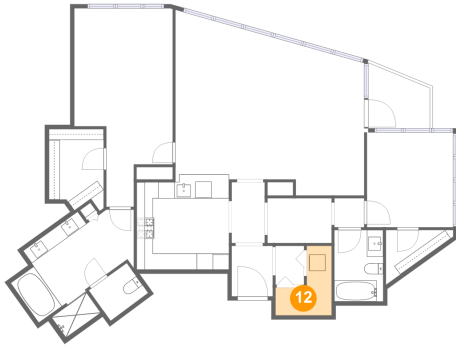


Dimensions: 8'3" x 5'5"
Area: 31 sq. ft
Counted as living area: Yes

Heated: Yes
Finished: Yes
Enclosed: Yes
Contiguous: Yes
Permitted: Yes
Wet space: No
Addition: No
Conversion: No

1201 South Prairie Avenue, Prairie District, Chicago,
Cook County, Illinois, United States, 60605, 1505

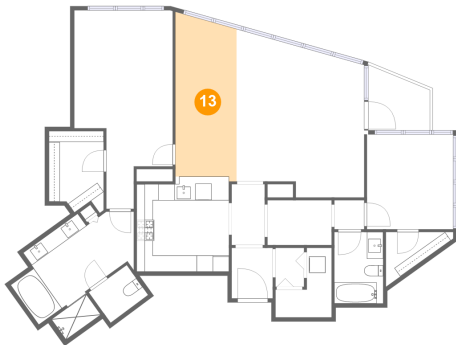
12 Floor 1 - Laundry



Dimensions: 6'11" x 8'6"
Area: 39 sq. ft
Counted as living area: Yes

Heated: Yes
Finished: Yes
Enclosed: Yes
Contiguous: Yes
Permitted: Yes
Wet space: No
Addition: No
Conversion: No

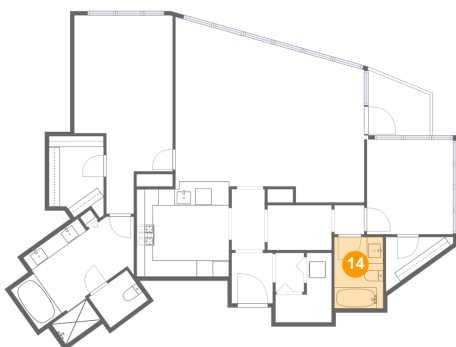
13 Floor 1 - Dining Area



Dimensions: 7'6" x 19'11"
Area: 144 sq. ft
Counted as living area: Yes

Heated: Yes
Finished: Yes
Enclosed: Yes
Contiguous: Yes
Permitted: Yes
Wet space: No
Addition: No
Conversion: No

14 Floor 1 - Bath

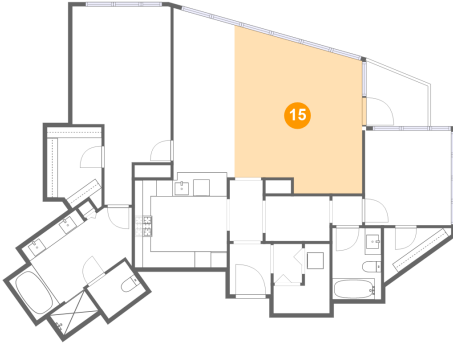


Dimensions: 6'0" x 8'9"
Area: 53 sq. ft
Counted as living area: Yes

Heated: Yes
Finished: Yes
Enclosed: Yes
Contiguous: Yes
Permitted: Yes
Wet space: Yes
Addition: No
Conversion: No

1201 South Prairie Avenue, Prairie District, Chicago,
Cook County, Illinois, United States, 60605, 1505

15 Floor 1 - Living Room



Dimensions: 15'8" x 18'5"
Area: 277 sq. ft
Counted as living area: Yes

Heated: Yes
Finished: Yes
Enclosed: Yes
Contiguous: Yes
Permitted: Yes
Wet space: No
Addition: No
Conversion: No

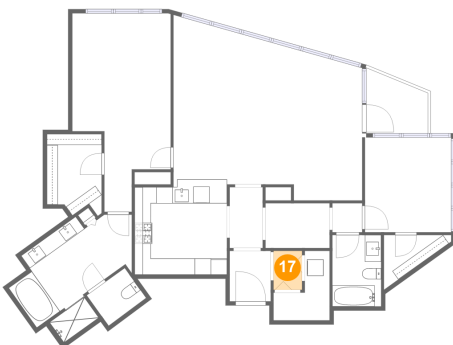
16 Floor 1 - WC



Dimensions: 5'9" x 4'7"
Area: 26 sq. ft
Counted as living area: Yes

Heated: Yes
Finished: Yes
Enclosed: Yes
Contiguous: Yes
Permitted: Yes
Wet space: Yes
Addition: No
Conversion: No

17 Floor 1 - Hall



Dimensions: 3'6" x 4'9"
Area: 17 sq. ft
Counted as living area: Yes

Heated: Yes
Finished: Yes
Enclosed: Yes
Contiguous: Yes
Permitted: Yes
Wet space: No
Addition: No
Conversion: No