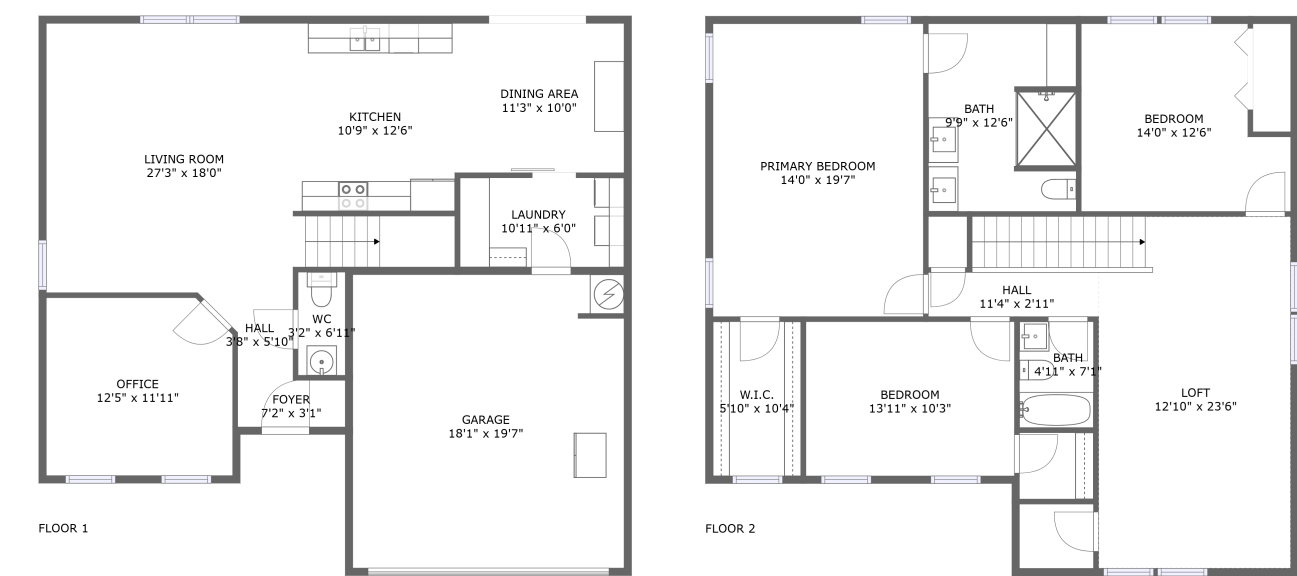




Home report


360 Jasmine Drive, Madison, Madison County, Alabama, United States, 35757




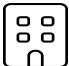
Property summary


 **1** Garages


 **3** Bedrooms

 **2** Bathrooms

 **1** Half baths

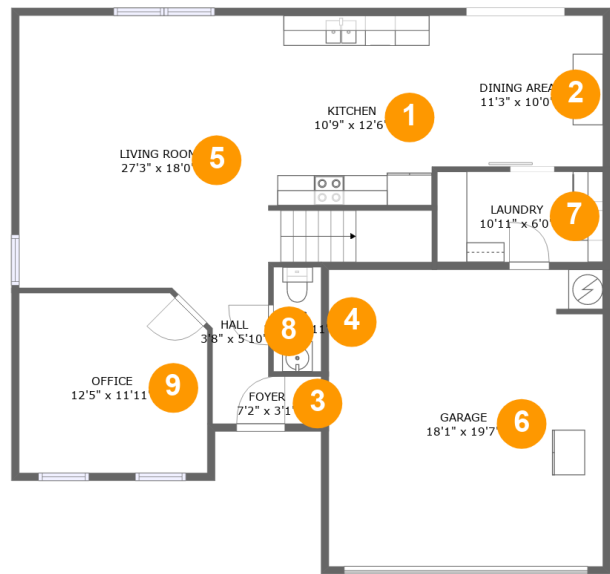
 **2** Floors

 **2,415** Gross living area sqft

 **2,679** Total sqft

Home report

360 Jasmine Drive, Madison, Madison County, Alabama, United States, 35757



Room dimensions

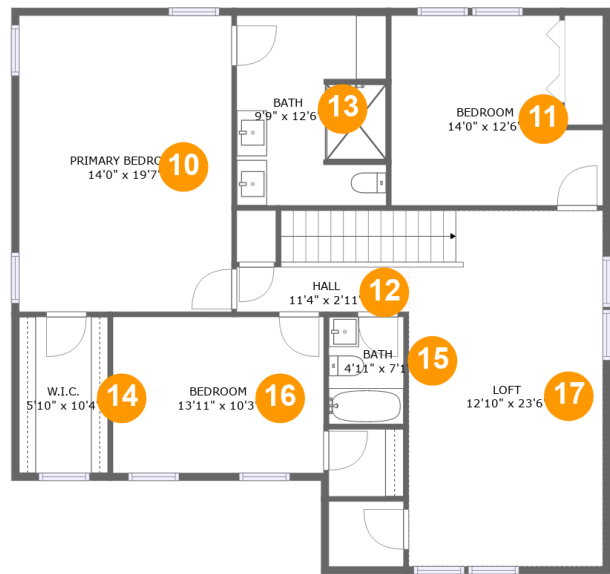
Floor 1

Total sqft: 1328 Living area: 1064

#		Max Dimensions	sqft	Included
1	Kitchen	10'9" x 12'6"	135 sq. ft	Yes
2	Dining Area	11'3" x 10'0"	113 sq. ft	Yes
3	Foyer	7'2" x 3'1"	22 sq. ft	Yes
4	WC	3'2" x 6'11"	22 sq. ft	Yes
5	Living Room	27'3" x 18'0"	333 sq. ft	Yes
6	Garage	18'1" x 19'7"	354 sq. ft	No
7	Laundry	10'11" x 6'0"	65 sq. ft	Yes
8	Hall	3'8" x 5'10"	25 sq. ft	Yes
9	Office	12'5" x 11'11"	145 sq. ft	Yes

Home report

360 Jasmine Drive, Madison, Madison County, Alabama, United States, 35757



Room dimensions

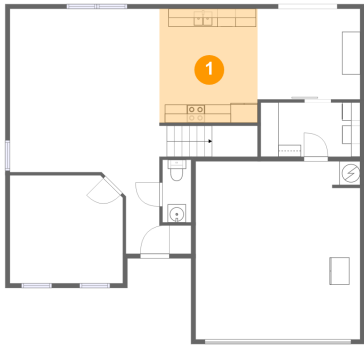
Floor 2

Total sqft: 1351

Living area: 1351

#		Max Dimensions	sqft	Included
10	Primary Bedroom	14'0" x 19'7"	274 sq. ft	Yes
11	Bedroom	14'0" x 12'6"	153 sq. ft	Yes
12	Hall	11'4" x 2'11"	33 sq. ft	Yes
13	Bath	9'9" x 12'6"	121 sq. ft	Yes
14	W.I.C.	5'10" x 10'4"	60 sq. ft	Yes
15	Bath	4'11" x 7'1"	35 sq. ft	Yes
16	Bedroom	13'11" x 10'3"	143 sq. ft	Yes
17	Loft	12'10" x 23'6"	333 sq. ft	Yes

1 Floor 1 - Kitchen



Max Dimensions: 10'9" x 12'6"
Calculated Area: 135 sq. ft
Included: Yes

Heated: Yes
Finished: Yes
Enclosed: Yes
Contiguous: Yes
Permitted: Yes
Wet space: No
Addition: No
Conversion: No

2 Floor 1 - Dining Area



Max Dimensions: 11'3" x 10'0"
Calculated Area: 113 sq. ft
Included: Yes

Heated: Yes
Finished: Yes
Enclosed: Yes
Contiguous: Yes
Permitted: Yes
Wet space: No
Addition: No
Conversion: No

3 Floor 1 - Foyer



Max Dimensions: 7'2" x 3'1"
Calculated Area: 22 sq. ft
Included: Yes

Heated: Yes
Finished: Yes
Enclosed: Yes
Contiguous: Yes
Permitted: Yes
Wet space: No
Addition: No
Conversion: No

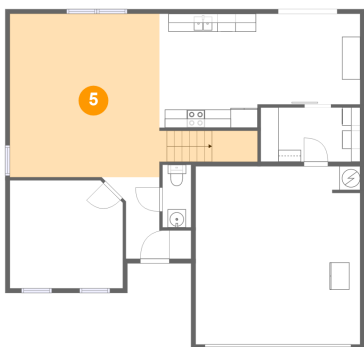
4 Floor 1 - WC



Max Dimensions: 3'2" x 6'11"
Calculated Area: 22 sq. ft
Included: Yes

Heated: Yes
Finished: Yes
Enclosed: Yes
Contiguous: Yes
Permitted: Yes
Wet space: Yes
Addition: No
Conversion: No

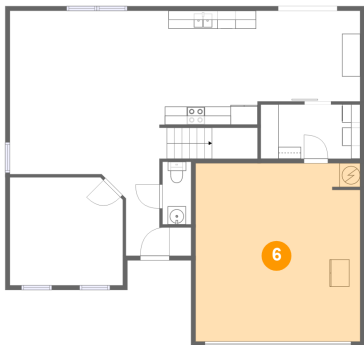
5 Floor 1 - Living Room



Max Dimensions: 27'3" x 18'0"
Calculated Area: 333 sq. ft
Included: Yes

Heated: Yes
Finished: Yes
Enclosed: Yes
Contiguous: Yes
Permitted: Yes
Wet space: No
Addition: No
Conversion: No

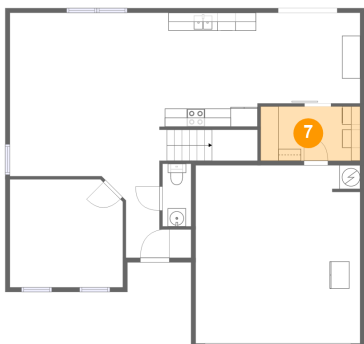
6 Floor 1 - Garage



Max Dimensions: 18'1" x 19'7"
Calculated Area: 354 sq. ft
Included: No

Heated: No
Finished: Yes
Enclosed: Yes
Contiguous: Yes
Permitted: Yes
Wet space: No
Addition: No
Conversion: No

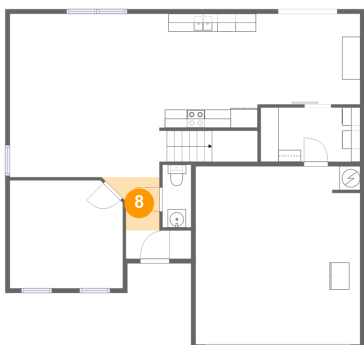
7 Floor 1 - Laundry



Max Dimensions: 10'11" x 6'0"
Calculated Area: 65 sq. ft
Included: Yes

Heated: Yes
Finished: Yes
Enclosed: Yes
Contiguous: Yes
Permitted: Yes
Wet space: No
Addition: No
Conversion: No

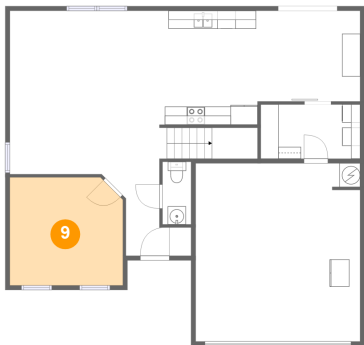
8 Floor 1 - Hall



Max Dimensions: 3'8" x 5'10"
Calculated Area: 25 sq. ft
Included: Yes

Heated: Yes
Finished: Yes
Enclosed: Yes
Contiguous: Yes
Permitted: Yes
Wet space: No
Addition: No
Conversion: No

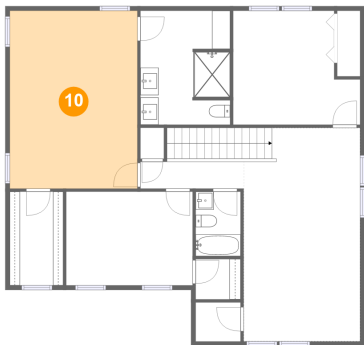
9 Floor 1 - Office



Max Dimensions: 12'5" x 11'11"
Calculated Area: 145 sq. ft
Included: Yes

Heated: Yes
Finished: Yes
Enclosed: Yes
Contiguous: Yes
Permitted: Yes
Wet space: No
Addition: No
Conversion: No

10 Floor 2 - Primary Bedroom



Max Dimensions: 14'0" x 19'7"
Calculated Area: 274 sq. ft
Included: Yes

Heated: Yes
Finished: Yes
Enclosed: Yes
Contiguous: Yes
Permitted: Yes
Wet space: No
Addition: No
Conversion: No

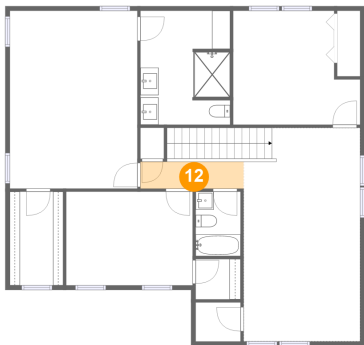
11 Floor 2 - Bedroom



Max Dimensions: 14'0" x 12'6"
Calculated Area: 153 sq. ft
Included: Yes

Heated: Yes
Finished: Yes
Enclosed: Yes
Contiguous: Yes
Permitted: Yes
Wet space: No
Addition: No
Conversion: No

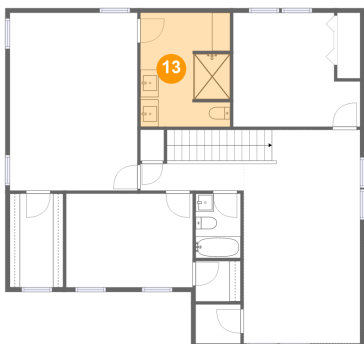
12 Floor 2 - Hall



Max Dimensions: 11'4" x 2'11"
Calculated Area: 33 sq. ft
Included: Yes

Heated: Yes
Finished: Yes
Enclosed: Yes
Contiguous: Yes
Permitted: Yes
Wet space: No
Addition: No
Conversion: No

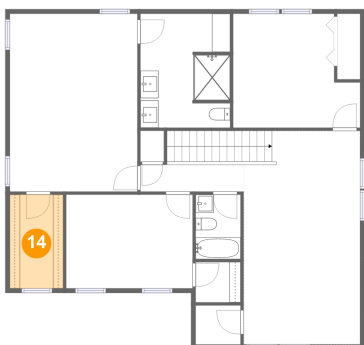
13 Floor 2 - Bath



Max Dimensions: 9'9" x 12'6"
Calculated Area: 121 sq. ft
Included: Yes

Heated: Yes
Finished: Yes
Enclosed: Yes
Contiguous: Yes
Permitted: Yes
Wet space: Yes
Addition: No
Conversion: No

14 Floor 2 - W.I.C.



Max Dimensions: 5'10" x 10'4"
Calculated Area: 60 sq. ft
Included: Yes

Heated: Yes
Finished: Yes
Enclosed: Yes
Contiguous: Yes
Permitted: Yes
Wet space: No
Addition: No
Conversion: No

360 Jasmine Drive, Madison, Madison County, Alabama, United States, 35757

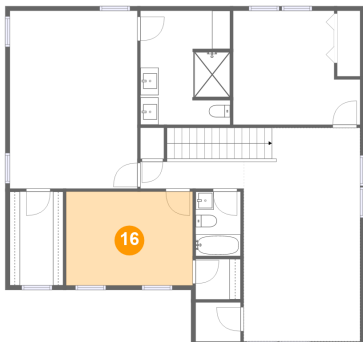
15 Floor 2 - Bath



Max Dimensions: 4'11" x 7'1"
Calculated Area: 35 sq. ft
Included: Yes

Heated: Yes
Finished: Yes
Enclosed: Yes
Contiguous: Yes
Permitted: Yes
Wet space: Yes
Addition: No
Conversion: No

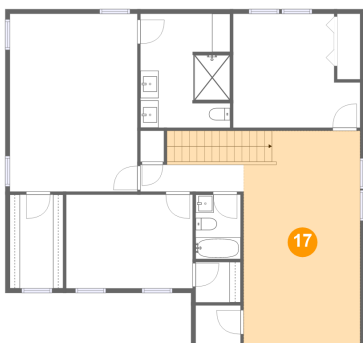
16 Floor 2 - Bedroom



Max Dimensions: 13'11" x 10'3"
Calculated Area: 143 sq. ft
Included: Yes

Heated: Yes
Finished: Yes
Enclosed: Yes
Contiguous: Yes
Permitted: Yes
Wet space: No
Addition: No
Conversion: No

17 Floor 2 - Loft



Max Dimensions: 12'10" x 23'6"
Calculated Area: 333 sq. ft
Included: Yes

Heated: Yes
Finished: Yes
Enclosed: Yes
Contiguous: Yes
Permitted: Yes
Wet space: No
Addition: No
Conversion: No