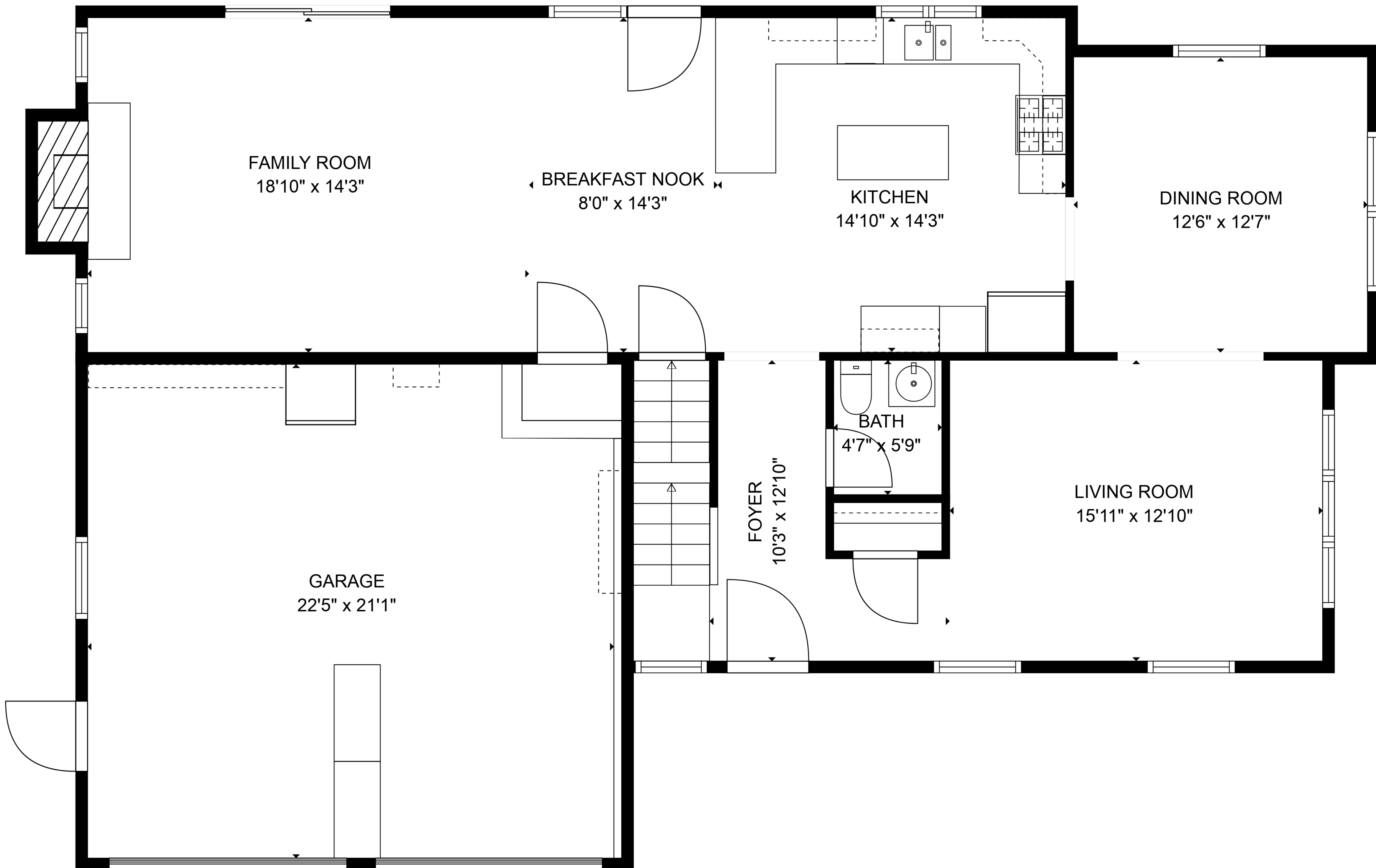


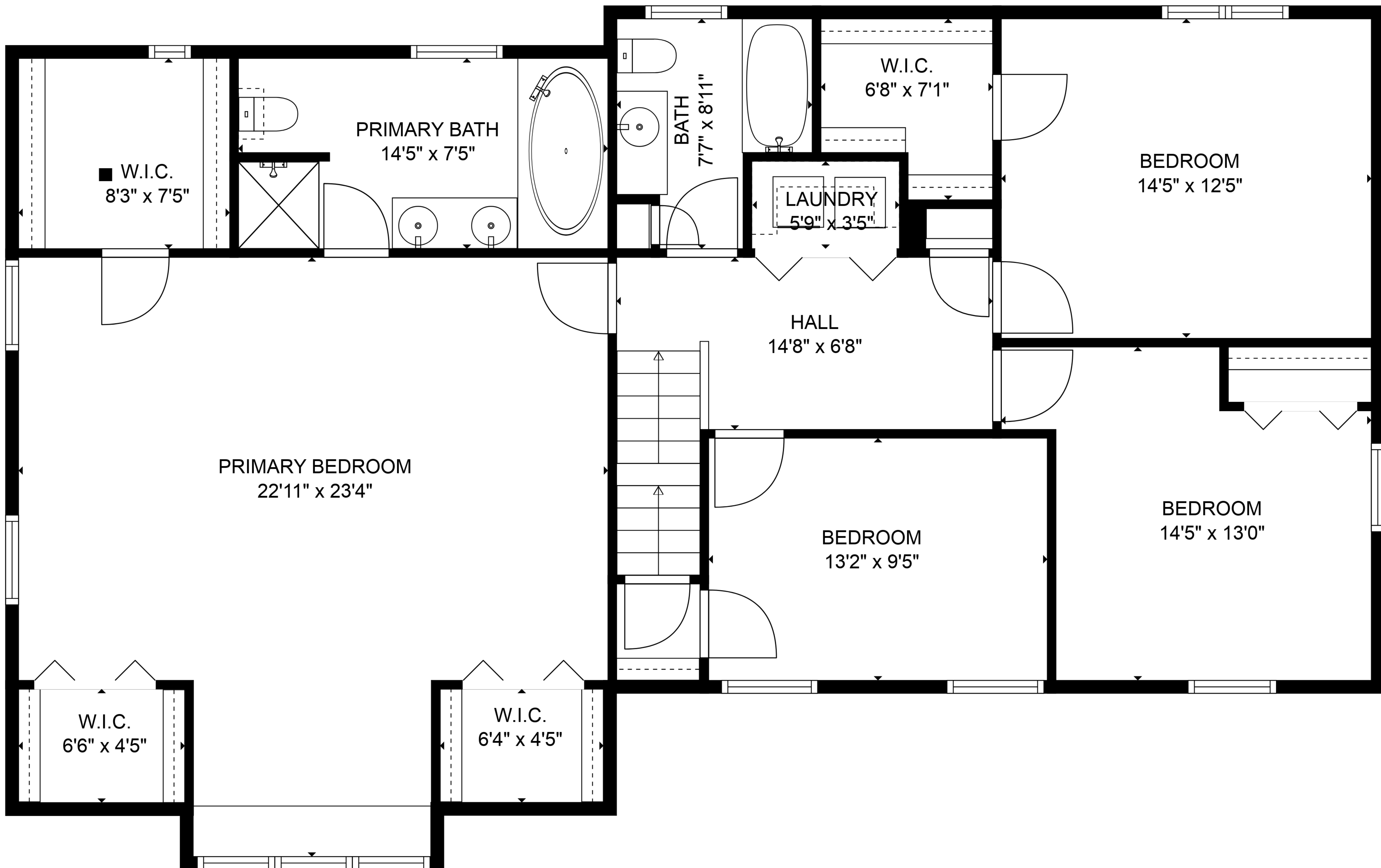
TOTAL: 3293 sq. ft

BELOW GROUND: 293 sq. ft, FLOOR 2: 1626 sq. ft, FLOOR 3: 1374 sq. ft
EXCLUDED AREAS: BASEMENT: 757 sq. ft, STORAGE: 56 sq. ft, FIREPLACE: 13 sq. ft,
LOW CEILING: 74 sq. ft
WALLS: 274 sq. ft



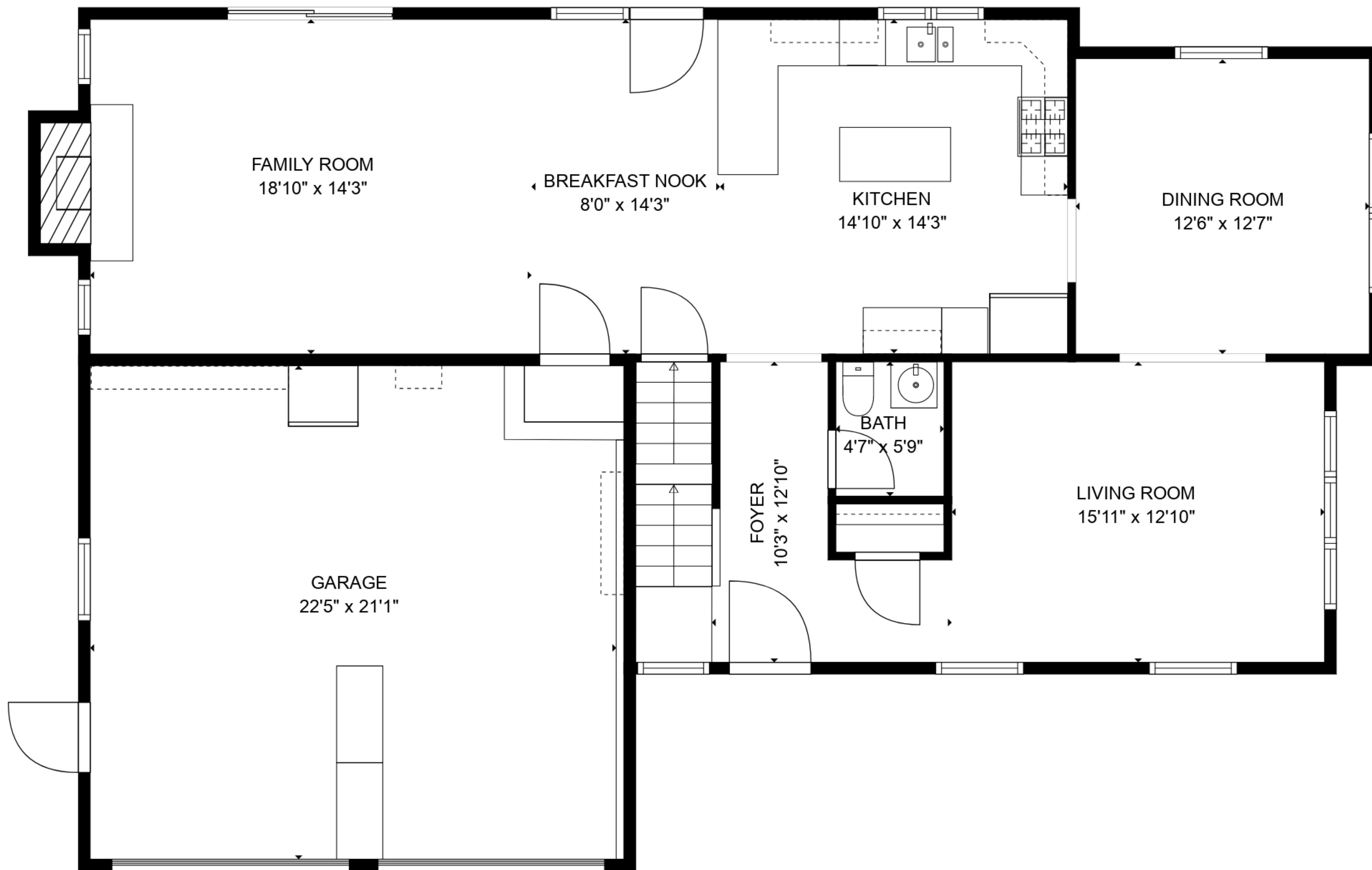
TOTAL: 3293 sq. ft

BELOW GROUND: 293 sq. ft, FLOOR 2: 1626 sq. ft, FLOOR 3: 1374 sq. ft
EXCLUDED AREAS: BASEMENT: 757 sq. ft, STORAGE: 56 sq. ft, FIREPLACE: 13 sq. ft,
LOW CEILING: 74 sq. ft
WALLS: 274 sq. ft

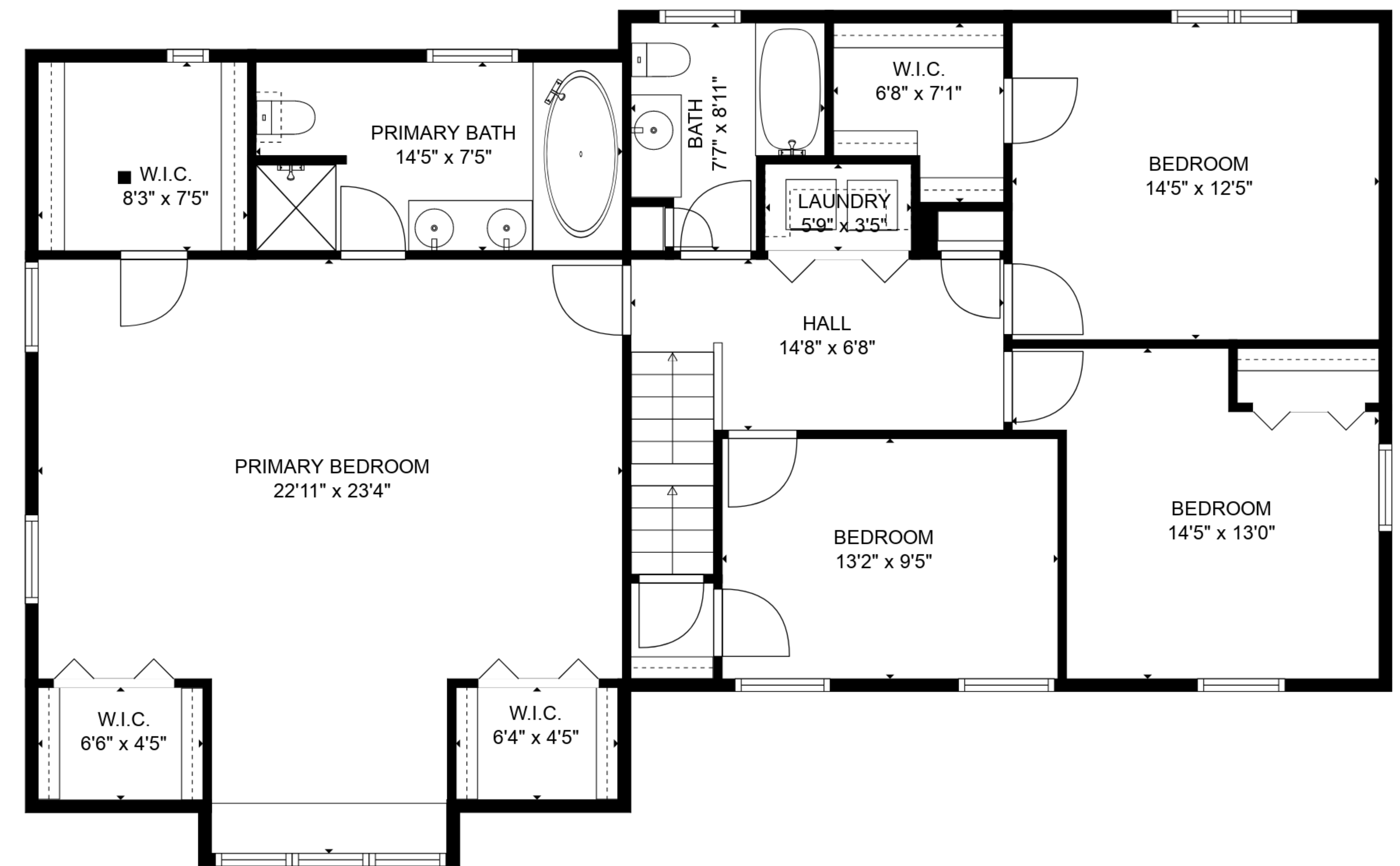


TOTAL: 3293 sq. ft

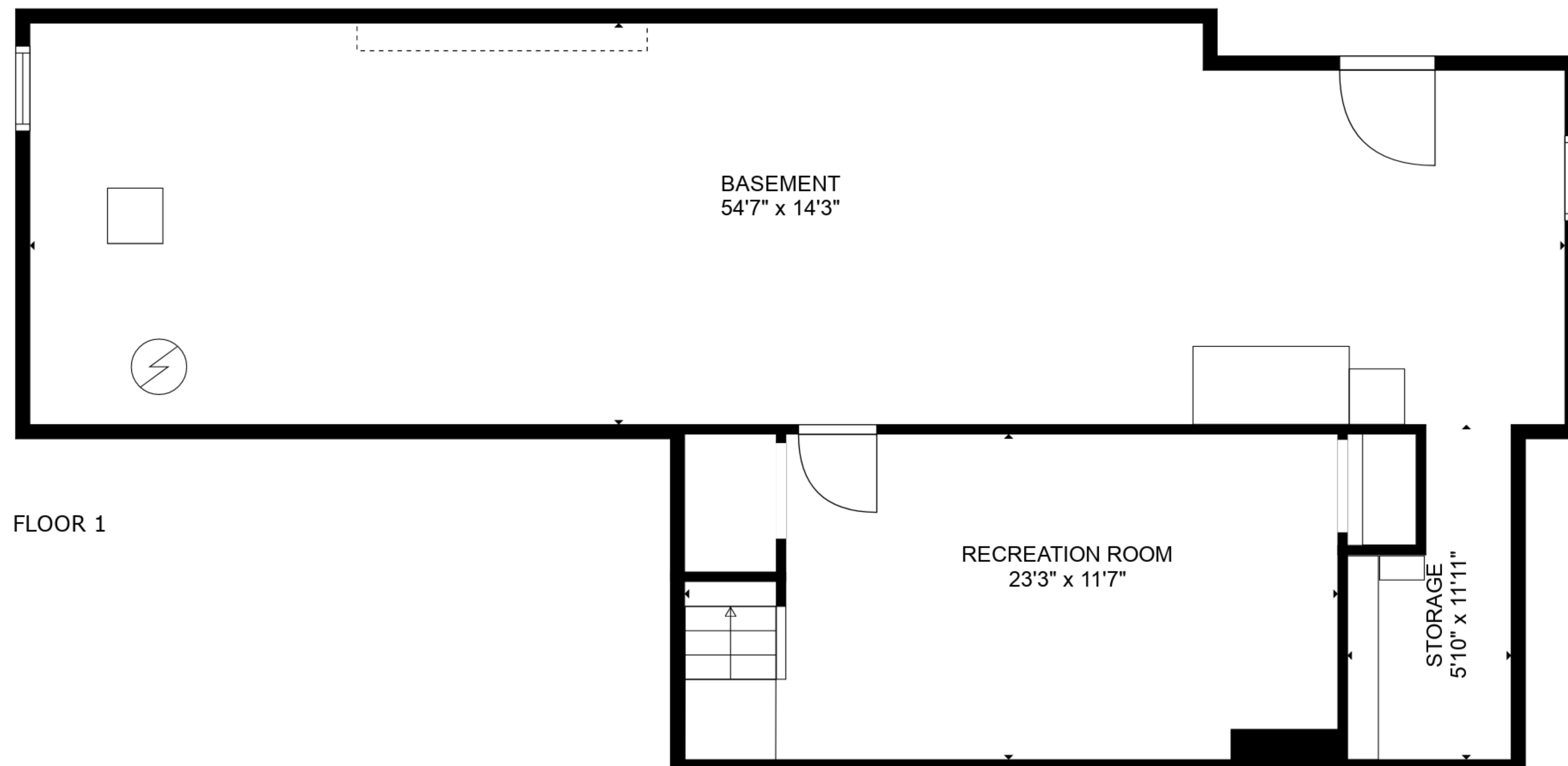
BELOW GROUND: 293 sq. ft, FLOOR 2: 1626 sq. ft, FLOOR 3: 1374 sq. ft
EXCLUDED AREAS: BASEMENT: 757 sq. ft, STORAGE: 56 sq. ft, FIREPLACE: 13 sq. ft,
LOW CEILING: 74 sq. ft
WALLS: 274 sq. ft



FLOOR 2



FLOOR 3



FLOOR 1

TOTAL: 3293 sq. ft

BELOW GROUND: 293 sq. ft, FLOOR 2: 1626 sq. ft, FLOOR 3: 1374 sq. ft
 EXCLUDED AREAS: BASEMENT: 757 sq. ft, STORAGE: 56 sq. ft, FIREPLACE: 13 sq. ft,
 LOW CEILING: 74 sq. ft
 WALLS: 274 sq. ft



Floor Plans are provided by HouseSnappers.com. Measurements are deemed highly reliable but not guaranteed.